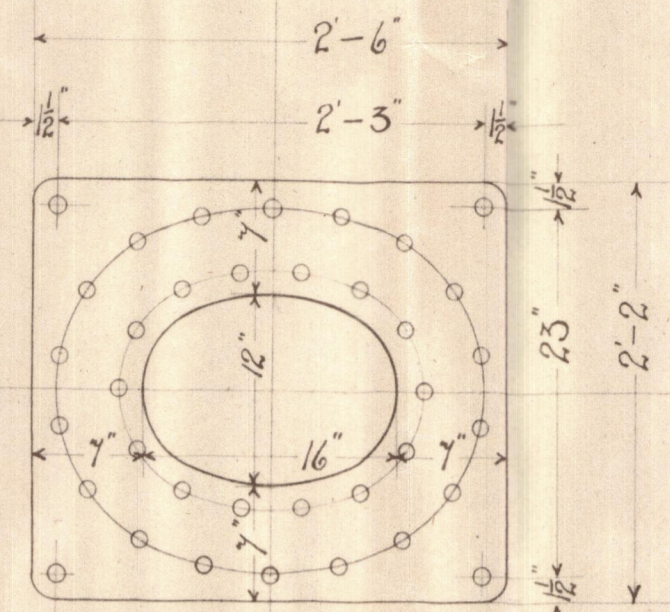
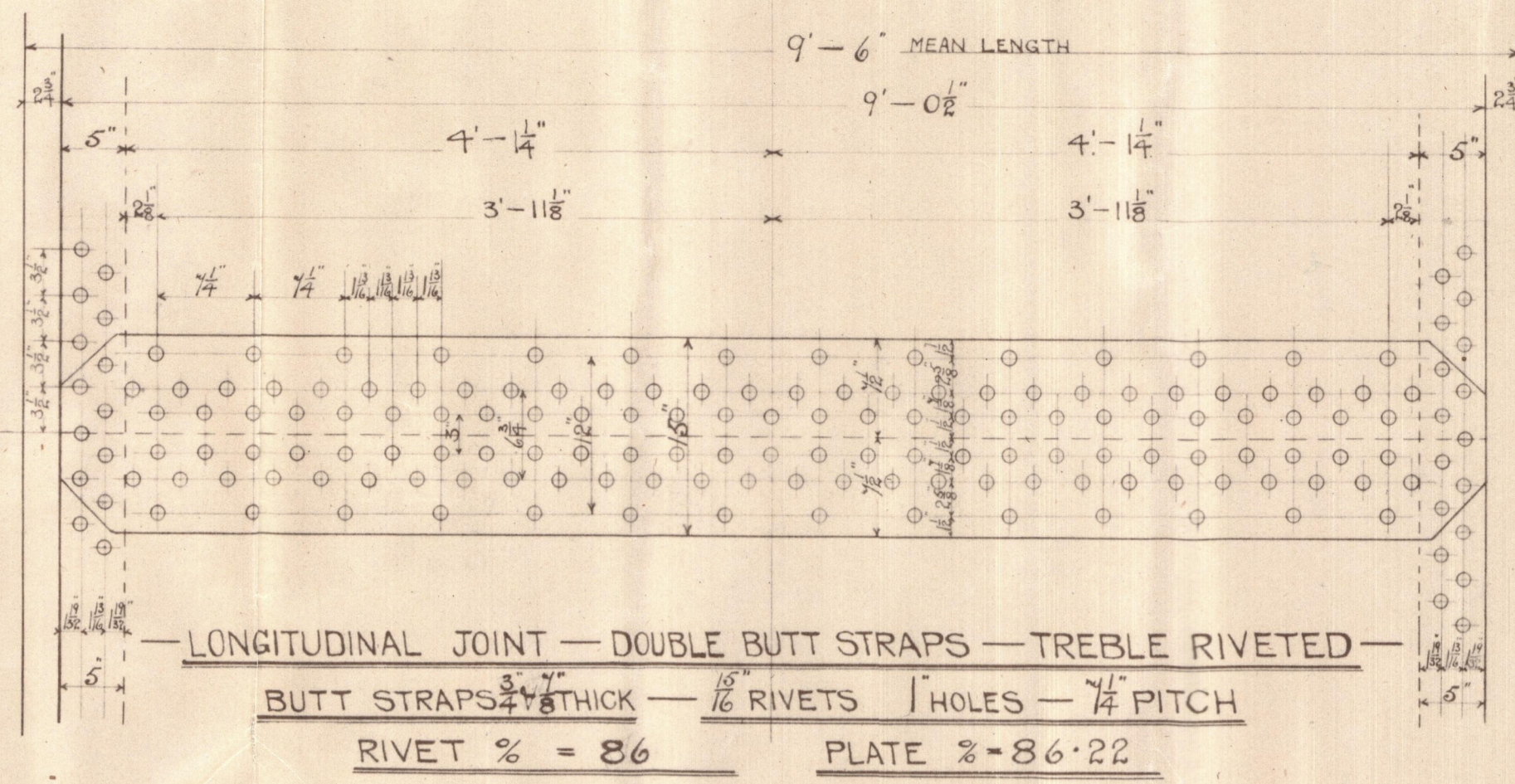


15:9:05



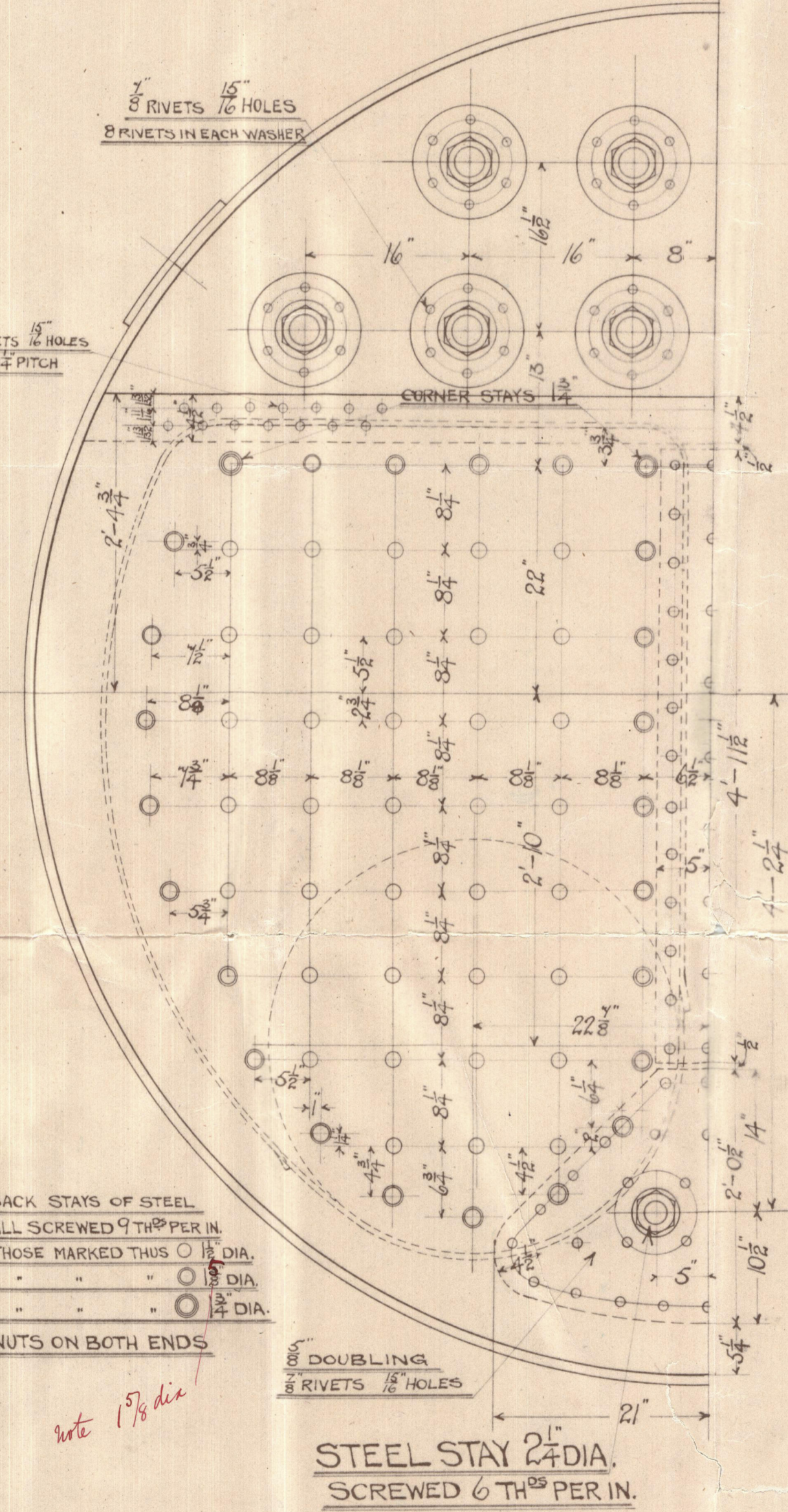
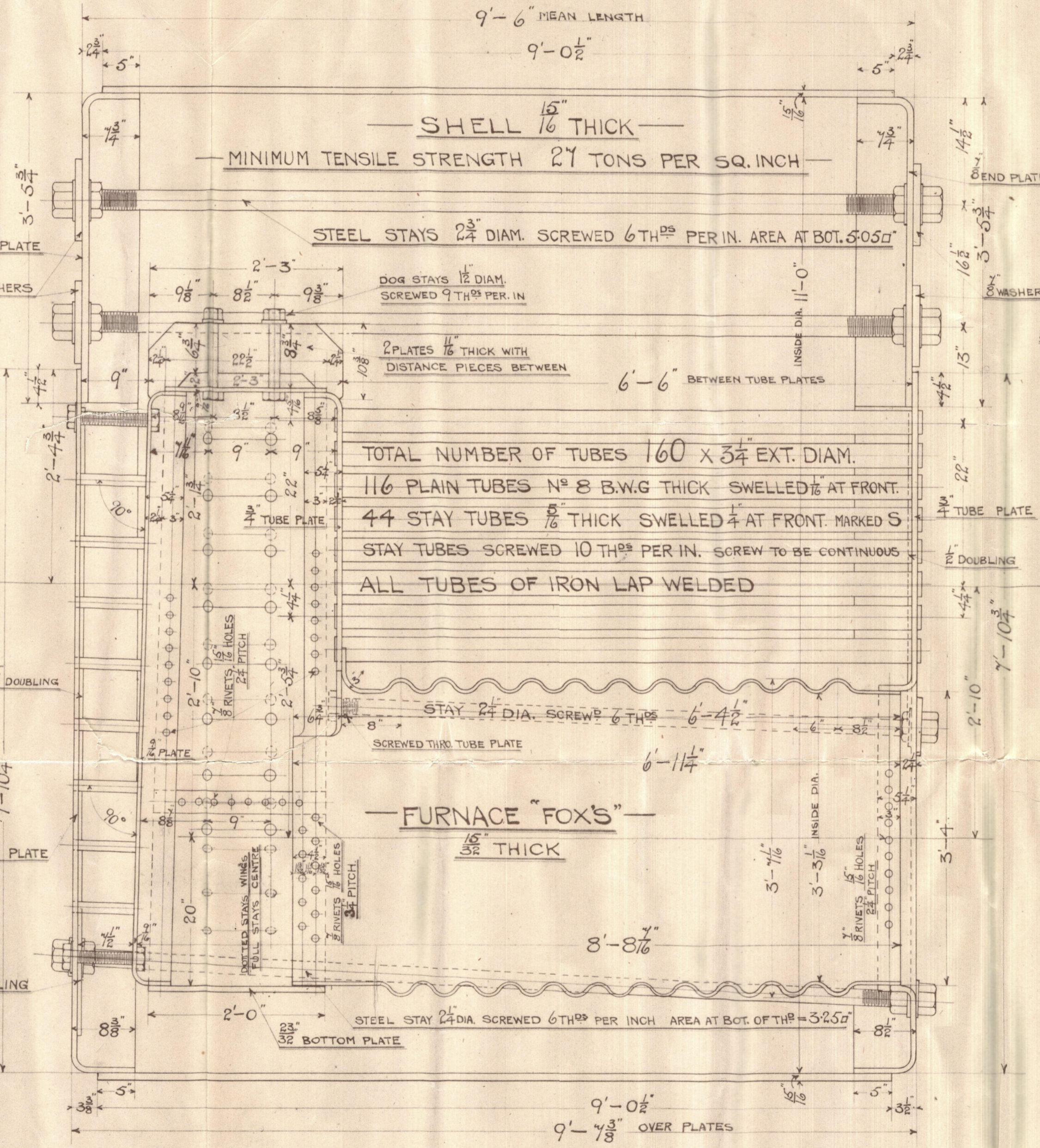
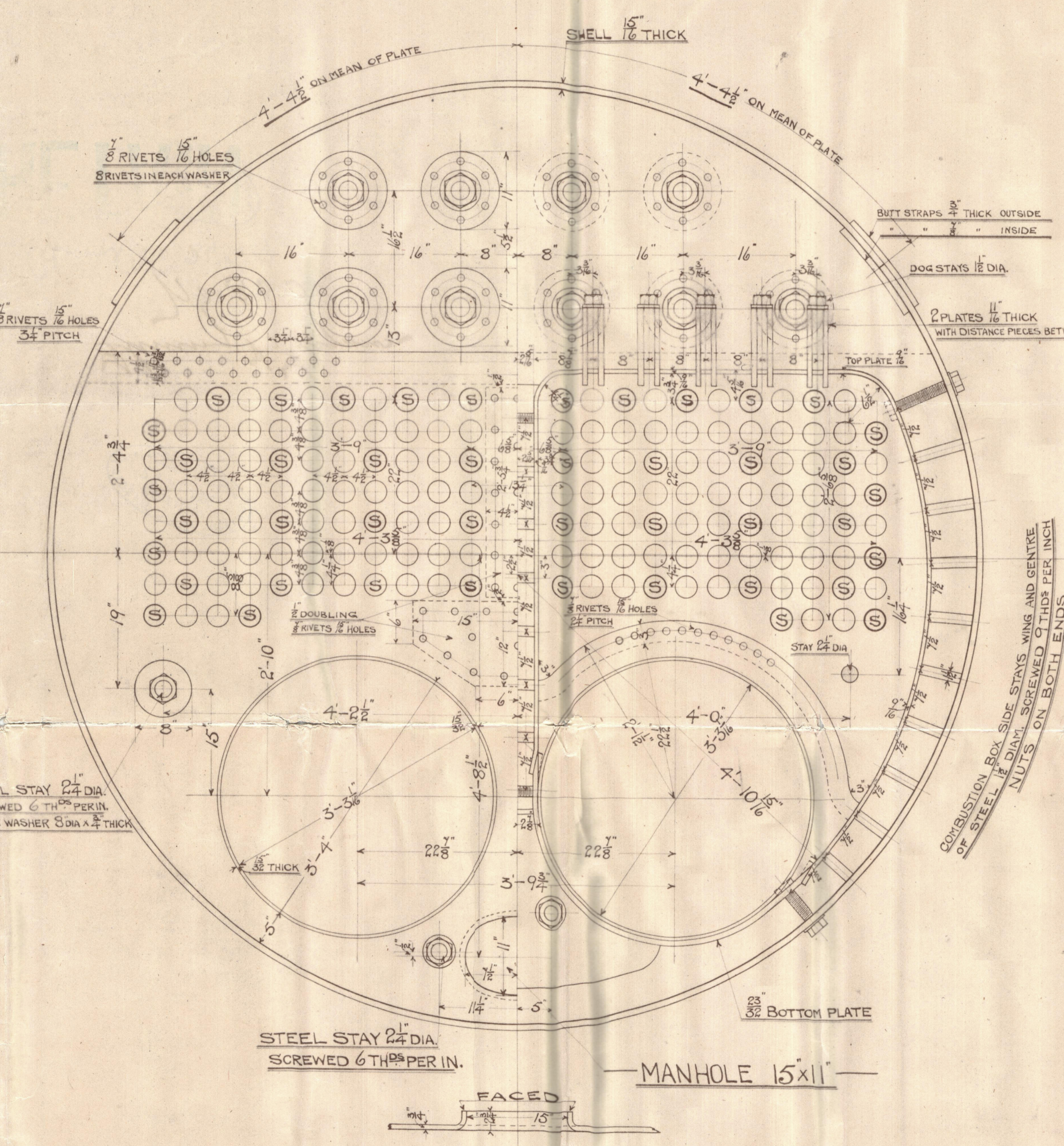
TOP MANHOLE 16' x 12"
COMPENSATING PLATE 1/8" THICK 16 RIVETS 1 HOLES

CIRCUMFERENTIAL JOINT
120 RIVETS IN EACH CIRCLE 3/8" PITCH
1 RIVETS 1 HOLES



LONGITUDINAL JOINT — DOUBLE BUTT STRAPS — TREBLE RIVETED —
BUTT STRAPS 3/8" THICK — 1/8" RIVETS 1 HOLES — 1" PITCH
RIVET % = 86 PLATE % = 86.22

ALL RIVET HOLES DRILLED IN PLACE
AND MACHINE RIVETED WHERE POSSIBLE



RETURN TUBE BOILER FOR JOB N° 350

11'-0" INTERNAL DIAMETER x 9'-6" MEAN LENGTH

WORKING PRESSURE 160 LBS. PER. SQUARE INCH

TWO OFF

SCALE 1" = ONE FOOT
8:9:1905



GRATE AREA
39 SQ. FT.

HEATING SURFACE

160 TUBES	884.7 SQ. FT.
2 FURNACES	78.3 "
2 COMB. CHAMBS.	135.4 "
TOTAL	1098.4 SQ. FT.

TO PASS BOARD OF TRADE AND LLOYD'S SURVEY.



Flaming & Ferguson
No 350

Gls. nkt. No. 24239



Blk



© 2020

Lloyd's Register
Foundation
W1240-0016