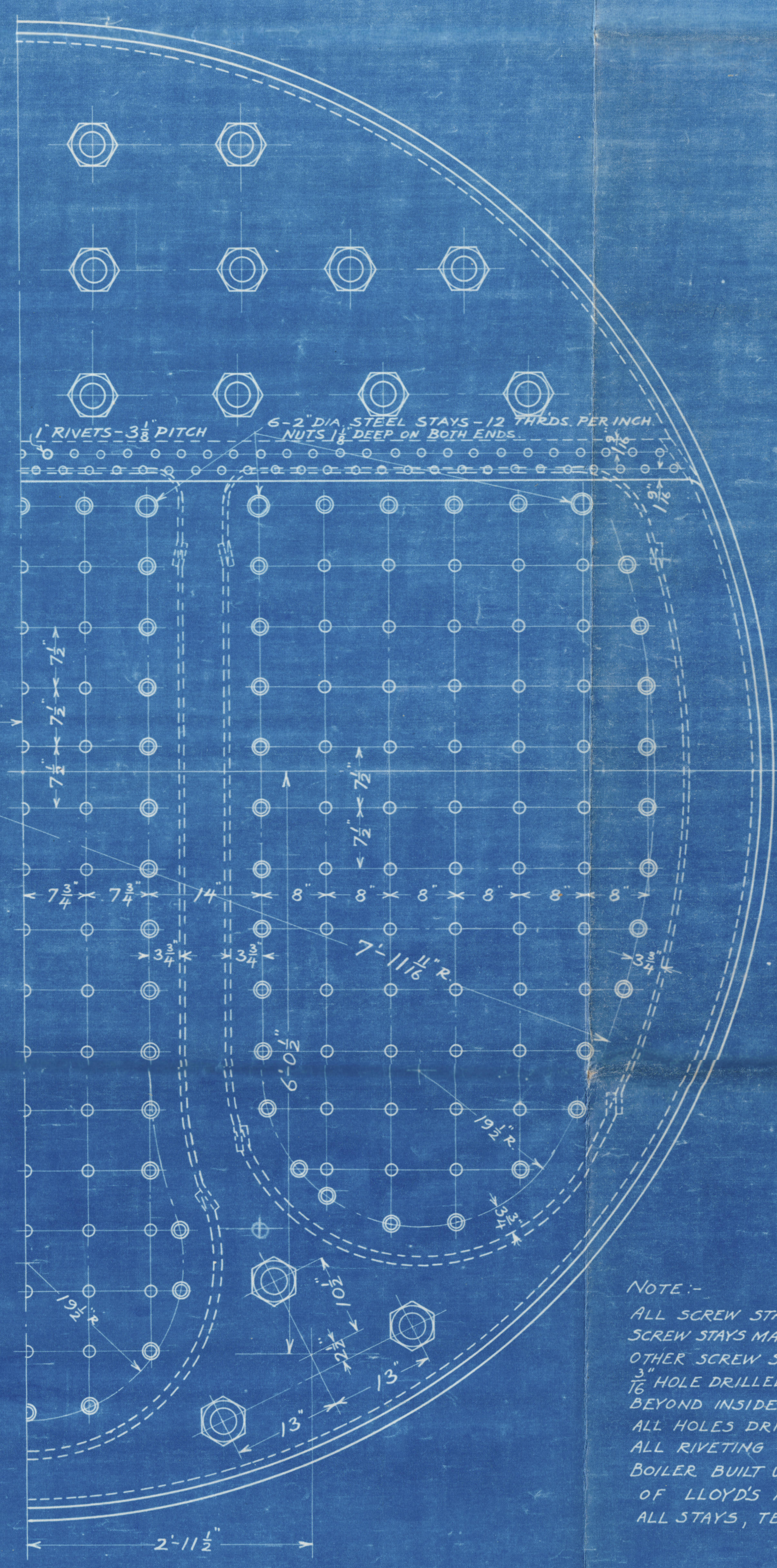
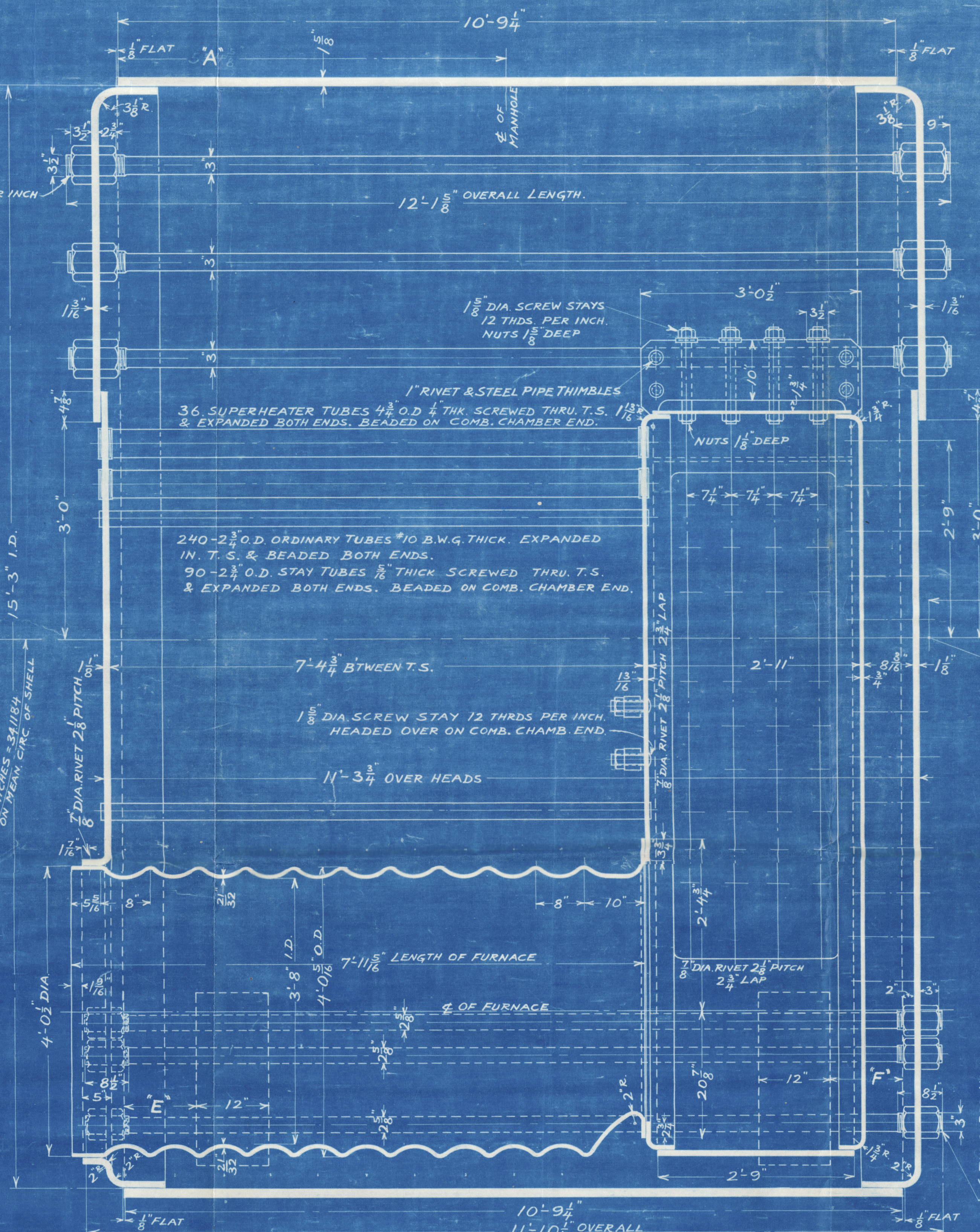
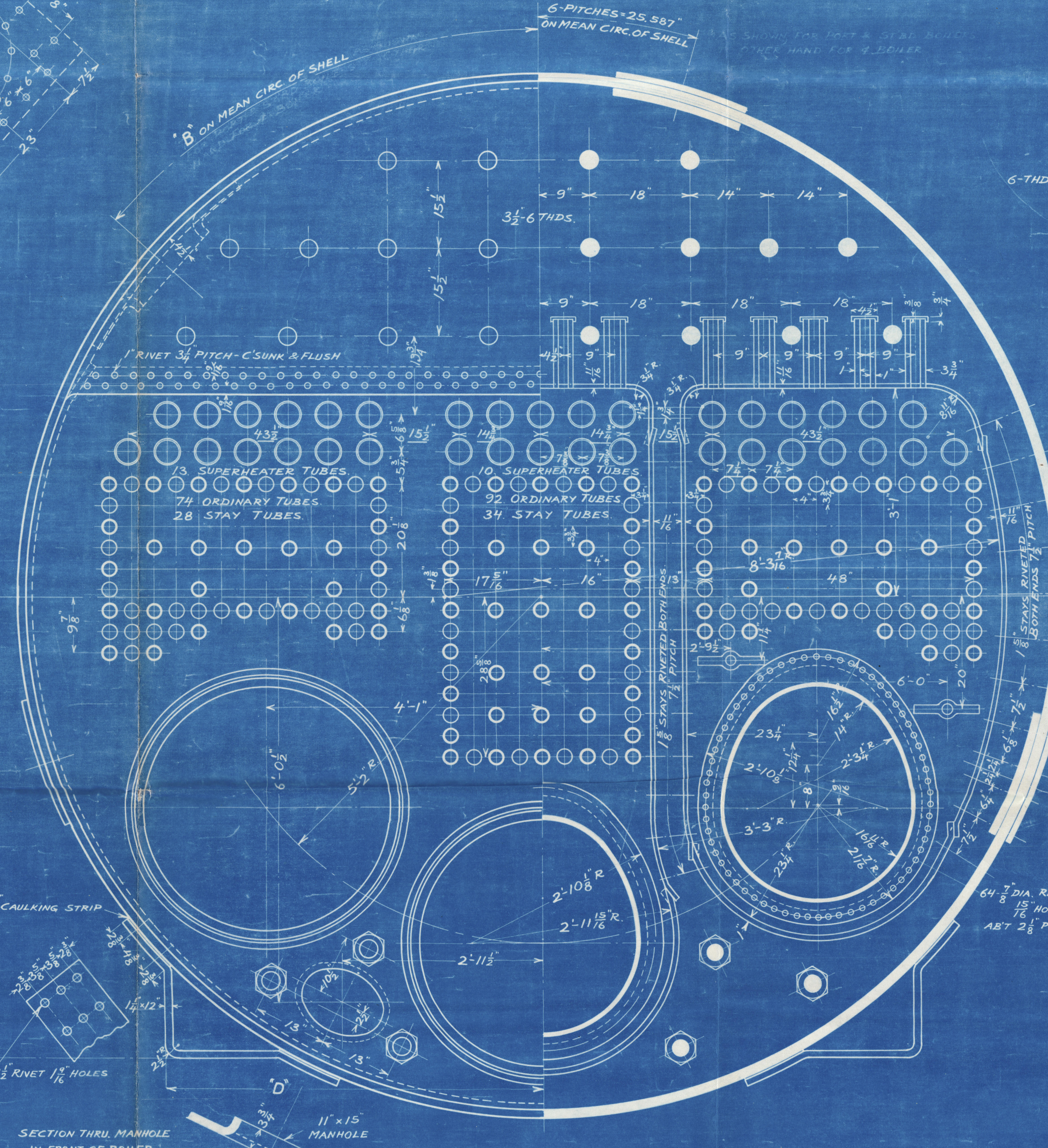
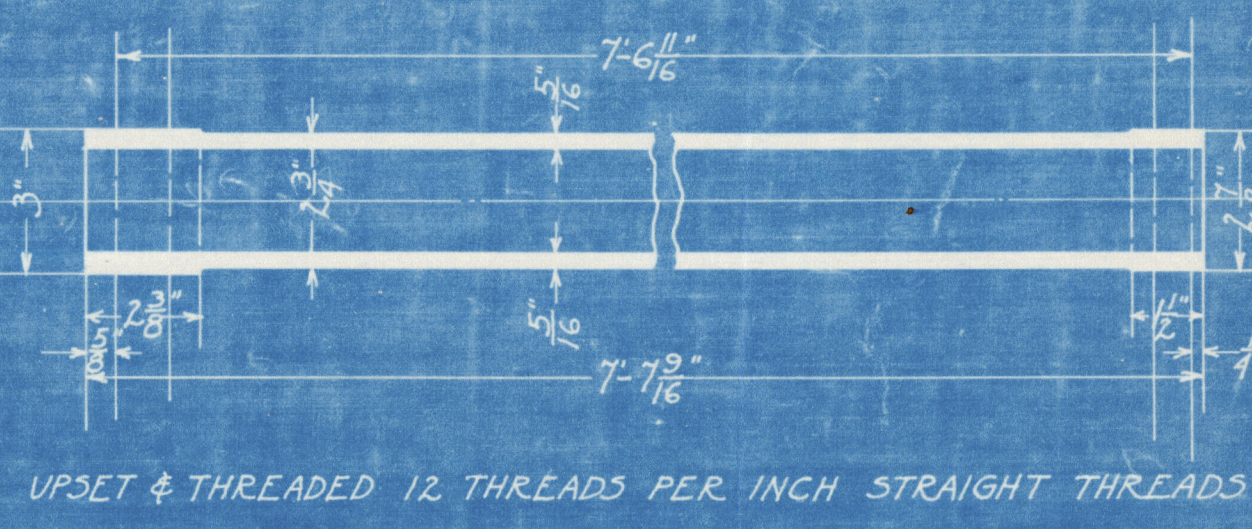
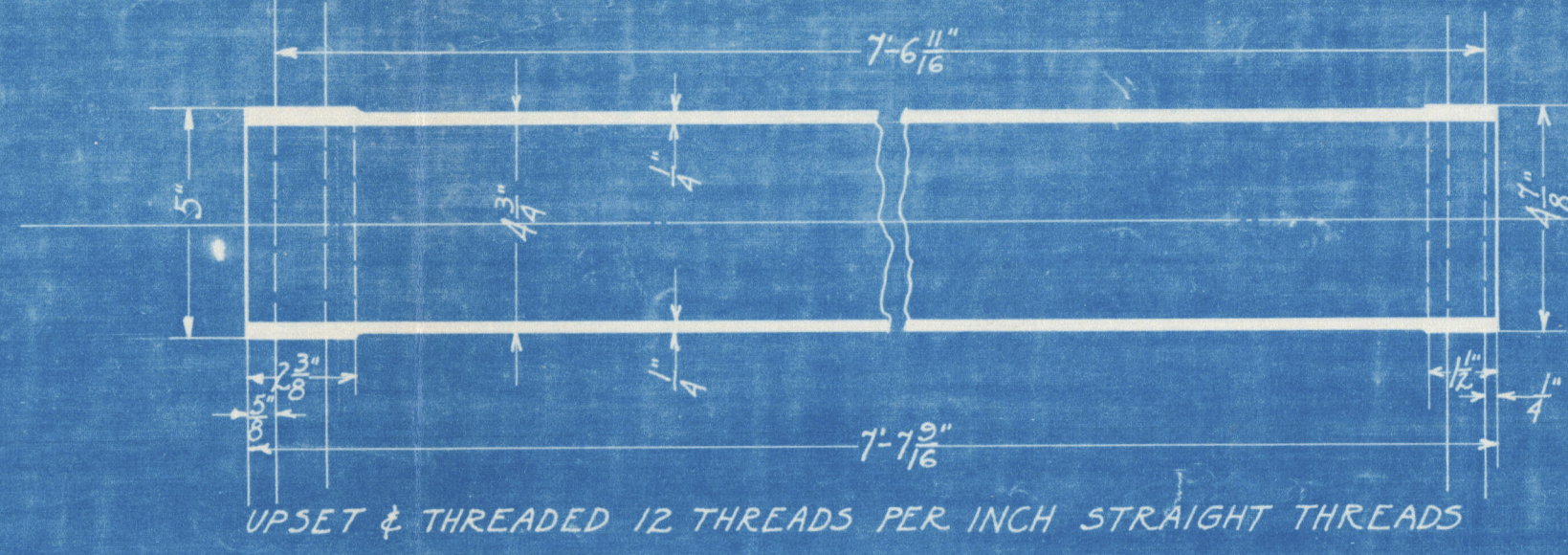
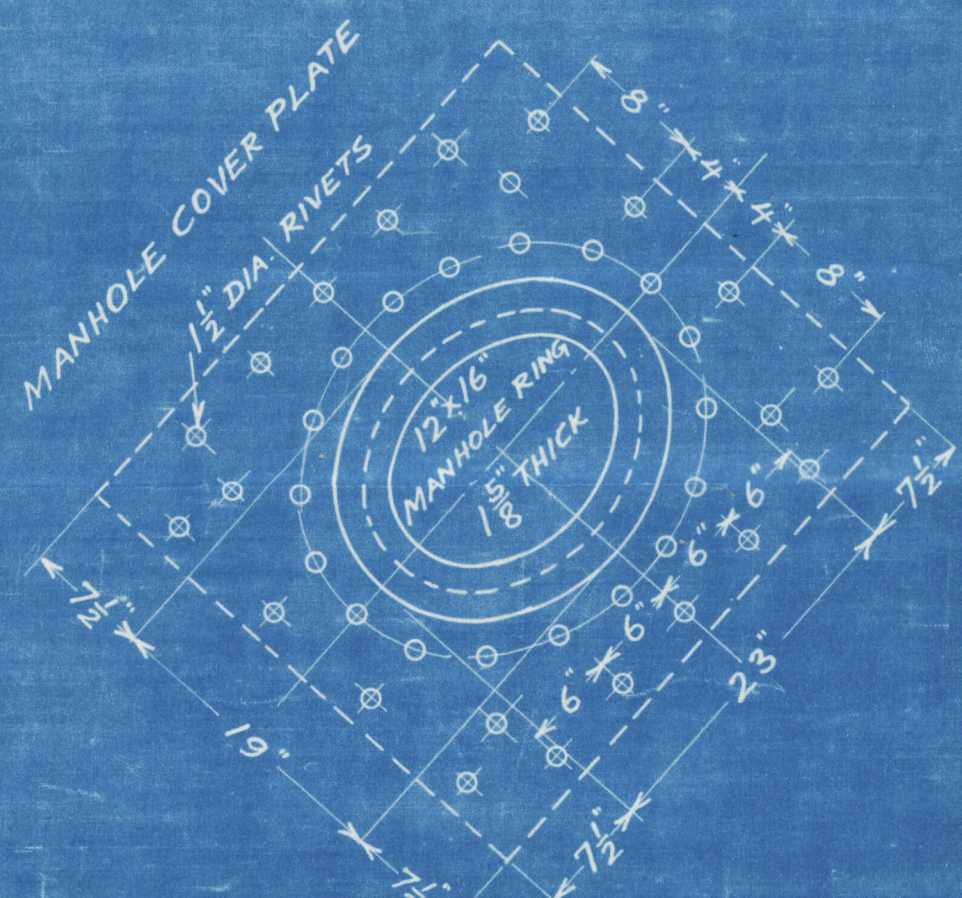


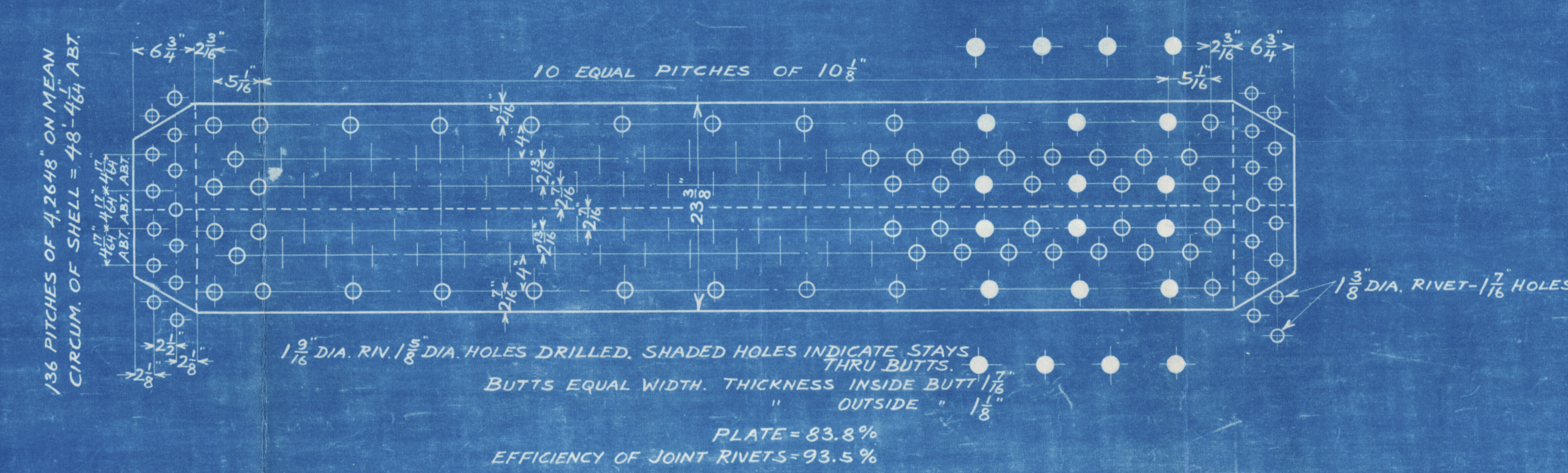
CONTRACT	A	B	C	D	E	F	QUANTITY
HULLS 31-33	6'-4"	6'-6"	6'-7"	6'-7"	12'	12'	8
CHICK 36-43	5'-4"	6'-6"	6'-10"	6'-7"	12'	12'	8
CHICK 5-10	5'-4"	6'-6"	6'-10"	6'-7"	12'	12'	8
HULLS 44-45	5'-4"	6'-6"	6'-10"	6'-7"	12'	12'	8
CHICK 11-14	5'-4"	6'-6"	6'-10"	6'-7"	12'	12'	8



DATA	BOILER
EXTERNAL DIATUBES (ORDINARY)	23
" " " (SUPERHEATER)	43
NO. OF 2 1/2" DIA. TUBES	330
" " " " "	36
BETWEEN TUBE SHEETS	7'-4"
SURFACE OF TUBES	1088
" " FURNACES	224
" " COMBUSTION CHAMBERS	300
TOTAL HEATING SURFACE	2612
NET AREA THRU TUBES	13.9
STEAM PRESSURE	210 LBS.
WATER TEST PRESSURE	315

PART	MATERIAL	MIN. T.S.	MAX. Y.S.	REQUIREMENTS
SHELL PLATES	Q.H. STEEL	60,000	71,680	LLOYDS & U.S. & A.B.S.
BUTT STRAPS	Q.H. STEEL	60,000	71,680	LLOYDS & U.S. & A.B.S.
MANHOLE RING	Q.H. STEEL	60,000	71,680	LLOYDS & A.B.S.
GIRDERS	Q.H. STEEL	60,000	71,680	LLOYDS & A.B.S.
FLANGE & FIRE BOX PLATE	Q.H. STEEL	65,000	65,000	LLOYDS & A.B.S.
MORRISON SUSPENSION FURNACE	Q.H. STEEL	65,000	65,000	LLOYDS & U.S. & A.B.S.
TUBES	WILD STEEL	—	—	MILL TO FURNISH CERTIFICATE TO U.S.
RIVETS	MILD STEEL	58,240	67,200	LLOYDS & A.B.S.
LONGITUDINAL STAYS	Q.H. STEEL	62,720	71,680	LLOYDS & U.S. & A.B.S.
SCREW STAYS	Q.H. STEEL	58,240	67,200	LLOYDS & U.S. & A.B.S.
SCREW STAY NUTS	Q.H. STEEL	—	—	MILL INSPECTION ONLY
BOLTING LUGS	Q.H. STEEL	—	—	MILL INSPECTION ONLY

BOILERS TO BE INSPECTED AS LISTED	LLOYDS & U.S.
HULLS 31-33	A.B.S. & U.S.
" " 36-43	A.B.S. & U.S.
CHICK, HULLS 5-10	A.B.S. & U.S.
HULLS 44-45	A.B.S. & U.S.
CHICK, HULLS 11-14	A.B.S. & U.S.



APPROVED	DATE
LLOYDS	6-6-19
U.S.	9-20-19
A.B.S.	9-22-19

CHANGES	DATE
1	6-11-19
2	8-5-19
3	8-5-19
4	10-28-19
5	10-28-19

STEEL REGISTER

2612 SQUARE FOOT SINGLE END BOILER HULLS 31-63.

SCALE 3/4" = 1'-0"

DATE 5-22-1919

BY J. A. WATSON

FOR LLOYDS REGISTER

FEDERAL SHIPBUILDING CO.

ENGR. DEPT. 10

PLATE 42