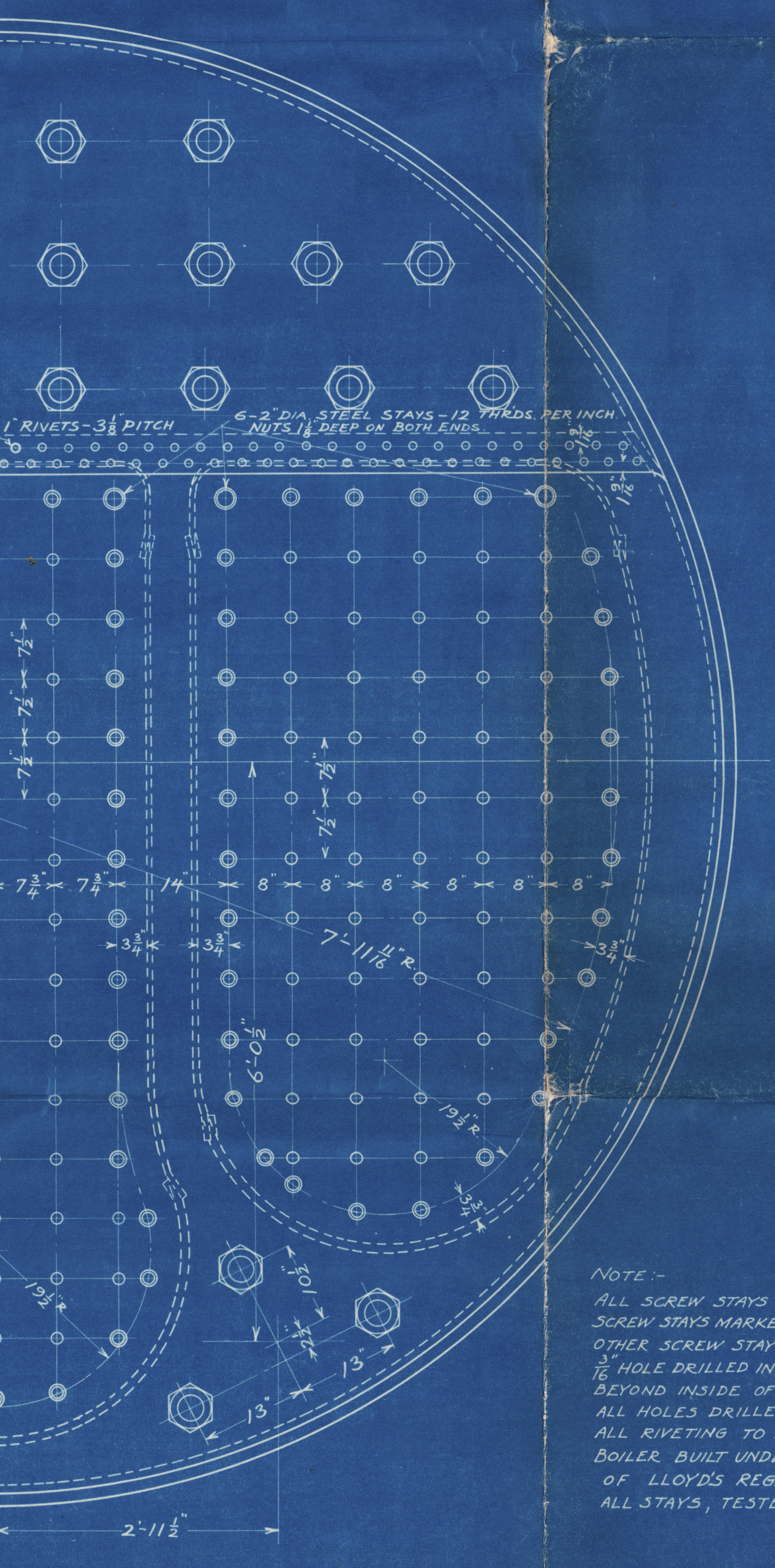
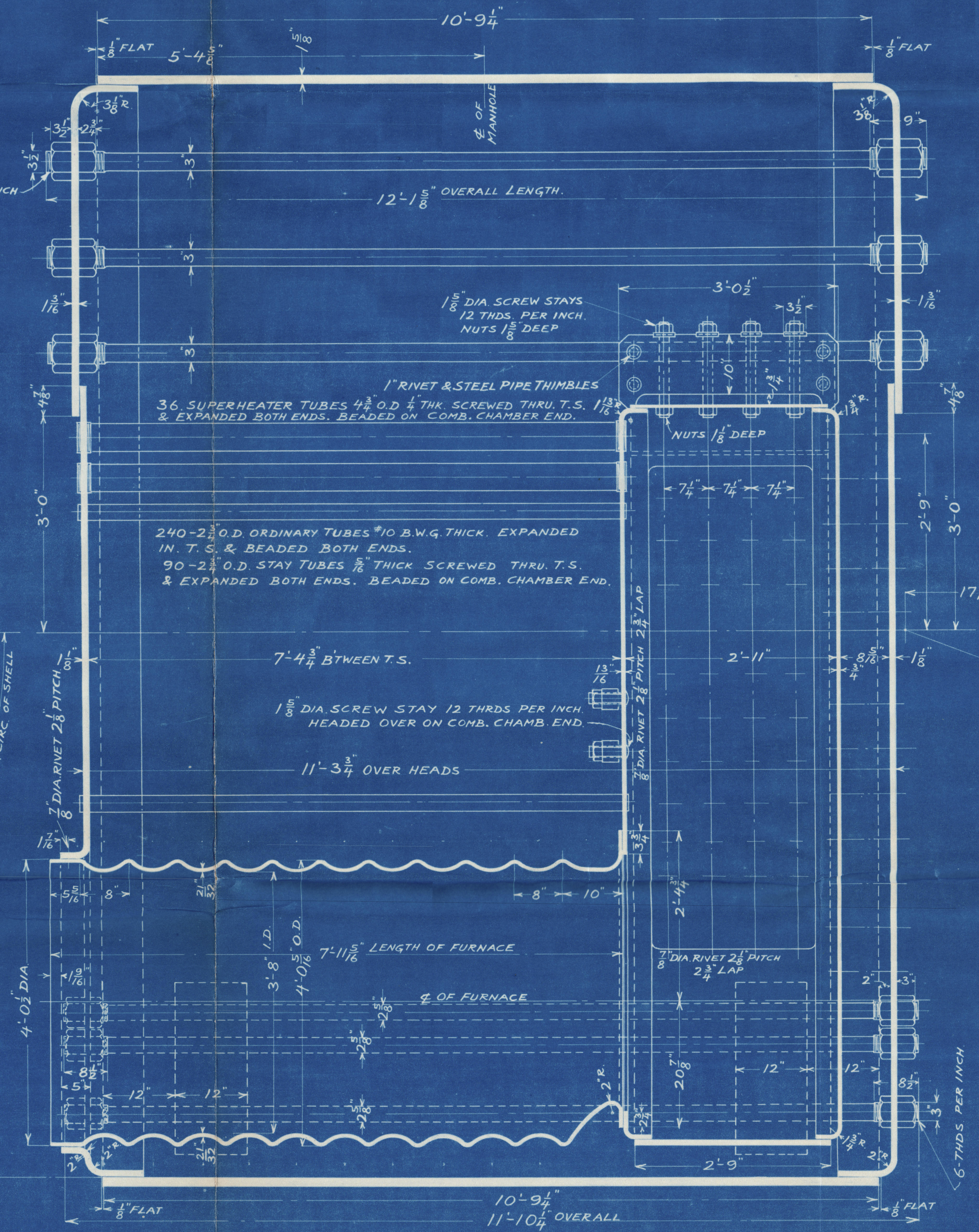
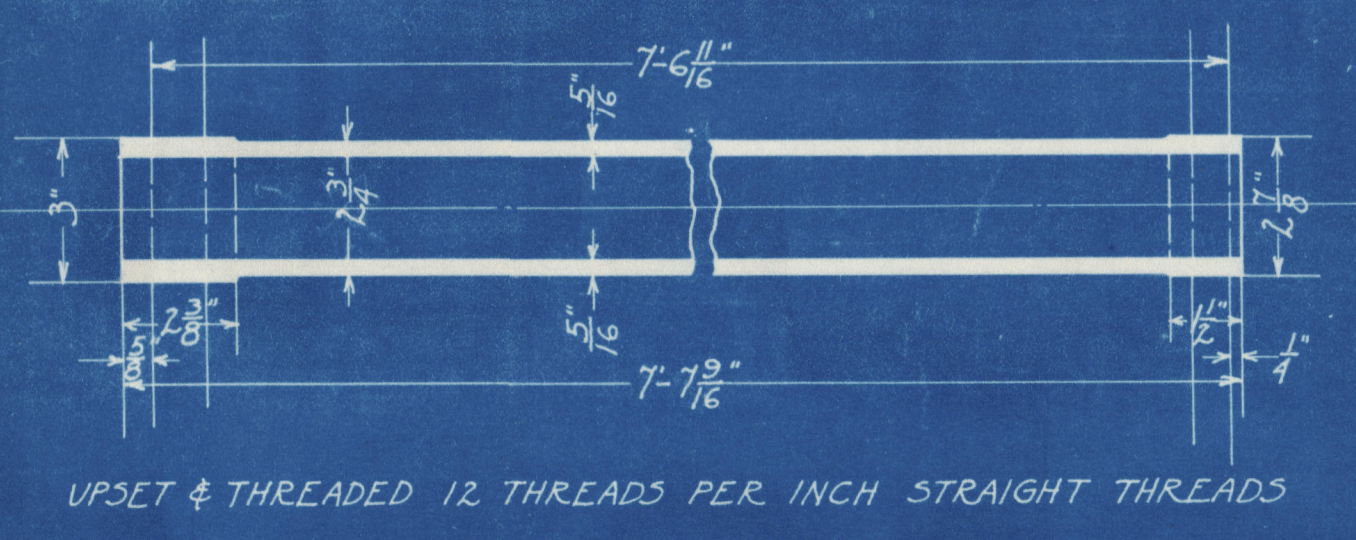
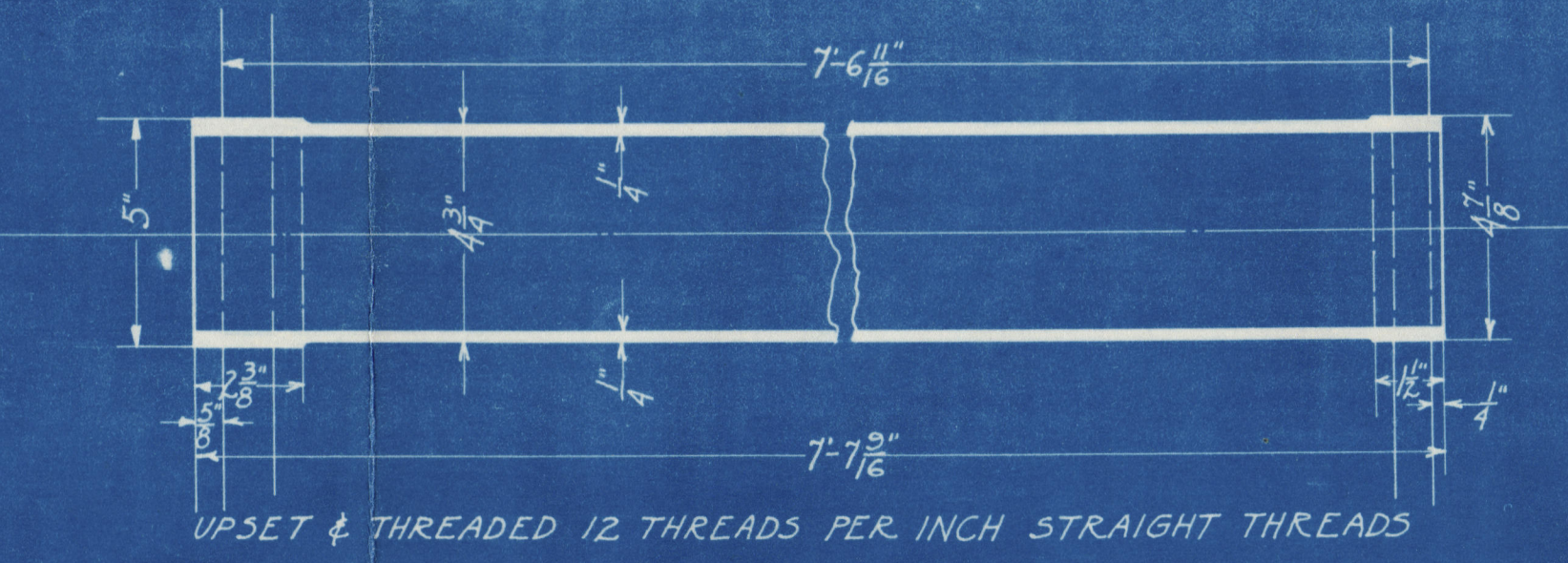


SECTION THRU MANHOLE IN FRONT OF BOILER



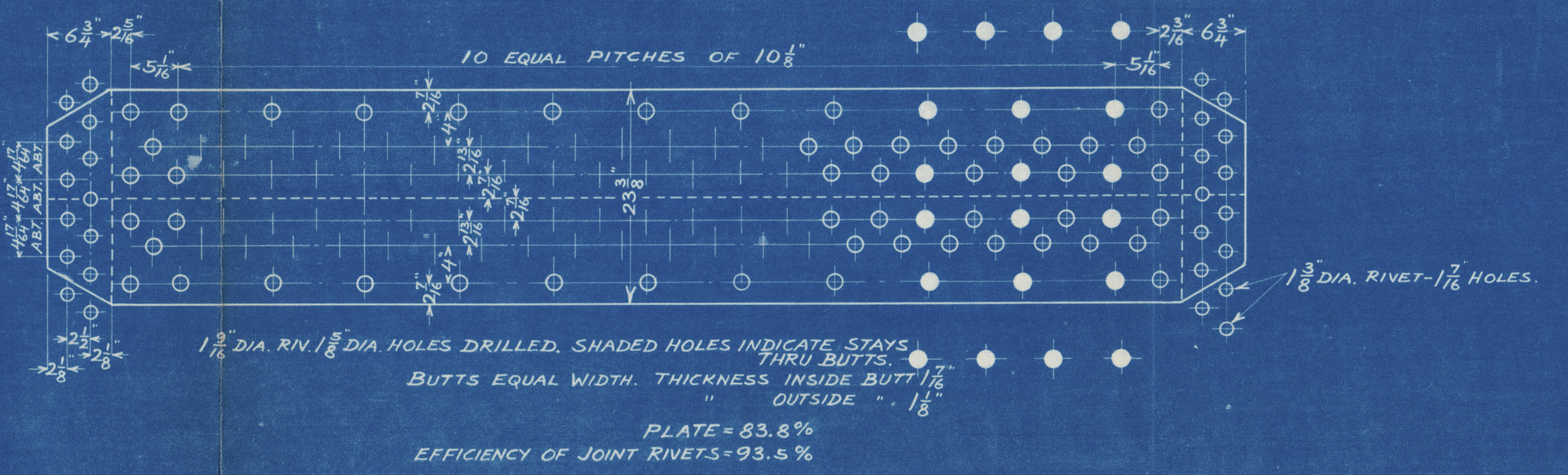
NOTE:-
ALL SCREW STAYS ARE STEEL RIVETED ON BOTH ENDS UNLESS OTHERWISE MARKED.
SCREW STAYS MARKED (S) ARE 1/2" DIA. 12 THDS. PER INCH.
OTHER SCREW STAYS ARE 1/2" DIA. 12 THDS. PER INCH UNLESS OTHERWISE MARKED.
1/2" HOLE DRILLED IN EACH END OF ALL SCREW STAYS EXTENDING 1/2" BEYOND INSIDE OF SHEET.
ALL HOLES DRILLED.
ALL RIVETING TO BE IN ACCORDANCE WITH DRG. NO. E5-12.
BOILER BUILT UNDER RULES OF U.S. STEAMBOAT INSPECTION SERVICE OF LLOYD'S REGISTER OF SHIPPING.
ALL STAYS, TESTED STEEL.

QUL BURNING

DATA	BOILER
EXTERNAL DIAPHRAGMS (ORDINARY)	22
" (SUPERHEATER)	42
NO. OF 2 1/2" DIA. TUBES	330
" 4"	36
BETWEEN TUBE SHEETS	7-4 1/2"
SURFACE OF TUBES	2000
" FURNACE	224
COMBUSTION CHAMBER	300
TOTAL HEATING SURFACE	2212
NET AREA THRU TUBES	18.4
STEAM PRESSURE	210 LBS.
WATER TEST PRESSURE	315

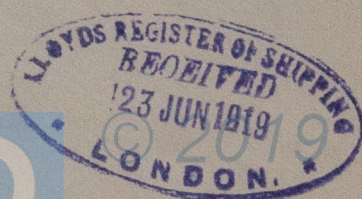
BILL OF MATERIAL

PART	MATERIAL	MIN. T.S. LBS.	MAX. T.S. LBS.	INSPECTION
SHELL PLATES	OH. STEEL	60,000	71,680	LLOYDS & U.S.
BUTT STRAPS	OH. STEEL	60,000	71,680	LLOYDS & U.S.
MANHOLE RING	OH. STEEL	60,000	71,680	LLOYDS
GIRDERS	OH. STEEL	60,000	71,680	LLOYDS
FLANGE & FIRE BOX PLATE	OH. STEEL	55,000	65,000	LLOYDS
MORRISON SUSPENSION FURNACE	OH. STEEL	55,000	65,000	LLOYDS & U.S.
TUBES	MILD STEEL	-	-	MILL INSPECTION ONLY
RIVETS	MILD STEEL	58,240	67,200	LLOYDS
LONGITUDINAL STAYS	OH. STEEL	62,720	71,680	LLOYDS & U.S.
SCREW STAYS	OH. STEEL	58,240	67,200	LLOYDS & U.S.
SCREW STAY NUTS	OH. STEEL	-	-	MILL INSPECTION ONLY
BOLTING LUGS	MEDIUM STEEL	-	-	MILL INSPECTION ONLY

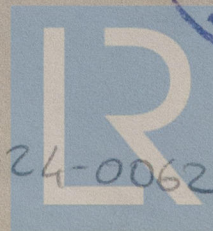


APPROVED
LLOYD'S REGISTER OF SHIPPING
2004 1019
NEW YORK
APR 1919

"Steel Age" N.Y. 18082
ASSEMBLY
2612 SQUARE FOOT
SINGLE END BOILER
HULLS 31-33.
FEDERAL SHIPBUILDING CO.
ENGINE DEPARTMENT
DR. NO. E5-42



w124-0062



Lloyd's Register
Foundation