

# Nº 152. MIDSHIP SECTION.

SCALE 1/2" TO ONE FOOT.

PRINCIPAL DIMENSIONS M.L.D.

385' 0" x 48' 6" x 89' 9"

TO CLASS LLOYD'S 100 A 1  
THREE DECK.

## EQUIPMENT

BOWER ANCHORS	2	47	43 CWT EACH STOCK
"	1	40	"
STREAM ANCHOR	1	12 1/2	"
KEDGE ANCHOR	1	12 1/2	"
STUD CHAIN CABLE	2 1/2	3	DIAP. 870 FATHOMS.
STEEL WIRE FOR STREAM ANCHOR	4 1/2	3	DIAP. 90 FATHOMS.
STEEL WIRE TOW LINE	4 1/2	3	DIAP. 120 "
HAWSERS	2	4	90 FATHOMS EACH.
WARPS	8	7	"

20-2-03  
GIRTH 51.12  
BREADTH 24.25  
DEPTH 30.75  
105.13  
-7.00  
99.13  
LENGTH x 383.17  
3798.4  
15" NUMBER.  
2" NUMBER.

PROPORTIONS:  
L+B = 383.17 + 48.5 = 7.9  
L+D = 383.17 + 30.75 = 12.46  
middle dist. = 16.83

COMBINED LENGTH  
OF TOW BRIDGE  
PARALLEL  
383.17 1100728.68  
8873  
+ 40666  
43539

Errecting on Barge  
86  
383.17  
1140  
44679

STEM BAR 11 1/2" TAPERED AT HEAD AS PER RULE.  
STERN FRAME 11 1/2" TAPERED AT HEAD OF STERN  
POST AS PER RULE.

RUDDER HEAD IS 12" DIAP.

MAIN PIECE AT HEEL 7 1/2" DIAMETER.

PINTLE 12" DIAP. SPACED NOT MORE THAN

FEET 3 INCHES APART.

ARM AT EACH PINTLE TO BE KEPT TO

MAIN PIECE. SIZE OF ARM AS PER RULE.

RUDDER PLATE 20" SINGLE

FRAMES 12 1/2" FOR 3/4 L. TO 3/4 SPACED 25" APART.

REV. FRAMES 12 1/2" TO UPPER DE. 4' ABOVE MAIN DE.

ALTERNATELY IN E.B. SPACE & IN AFTER

DECK. THEY ARE TO BE 4 1/2" 3/4" ALL TO UPPER

DECK. IN WAY OF FORE PEAK THEY ARE TO BE 5 1/2" 3/4"

AND EXTEND TO TAIL & MAIN DECK ALTERNATELY

TRANSVERSE BHD. 3/4" PLATE FOR LOWER HALF AND

3/4" FOR UPPER HALF.

VERTICAL STIFFENERS 1 1/2" 3/4" 3/4"

SPACED 30" APART AND TO HAVE BRACKET AT HEEL.

HORIZONTAL STIFFENERS 8 1/2" 3/4" BULGE ANGLE

SPACED 50" APART & TO HAVE BRACKET AT EACH END.

VERTICAL WEB 2 IN NUMBER ON EACH

BULKHEAD EXCEPT COLLISION BHD. AT PEAK BHD.

AND TO BE EXTENDED TO MAIN DE.

BULKHEAD FRAMES DOUBLE 1 1/2" 3/4" 3/4" ANGLES

" DE BARS DOUBLE 1 1/2" 3/4" 3/4" ANGLES

" TRUNK TOP BARS " 1 1/2" 3/4" 3/4" ANGLES

SEMI BOX BEAM PLATE 3/4" TO BE FITTED IN WAY

OF MIDDLE SIDE STRINGER.

SEMI BOX BEAM 10 1/2" 3/4" 3/4" CHANNEL

ORDINARY FLOOR 30 1/2" FOR 3/4 L. TO 3/4 AT ENDS.

SHAFT TUNNEL 3/4" PLATES.

STIFFENERS 4 1/2" 3/4" 3/4" ANGLES SPACED

5' 0" APART AND IN WAY OF HATCHWAYS

3' 0" APART.

## TANK FRAMING.

FRAMES 3 1/2" 3/4" FOR 3/4 L. TO 3/4 AT ENDS, & TO BE DOUBLE

BETWEEN COLLISION BHD. AND THE 3/4 L. FORWARD

FROM MARGIN PLATE TO MARGIN PLATE.

REV. FRAMES 3 1/2" 3/4" 3/4" ALL FORWARD EXCEPT THOSE

IN COLLISION SPACE WHERE THEY ARE TO BE 3 1/2" 3/4" ANGLE IRON.

TANK REVERSE TO BE DOUBLED IN E.B. SPACE

VERTICAL & LONGITUDINAL INTERCOSTAL ANGLES 3 1/2" 3/4"

IN COLLISION SPACE 3 1/2" 3/4" ANGLE IRON.

TANK FLOOR PLATES 3/4" IN COLLISION SPACE 1 1/2" IRON PLATE

TANK INTERCOSTAL PLATES 3/4" IN COLLISION SPACE 1 1/2" IRON PLATE

TANK TOP PLATES TO BE 3/4" FOR 3/4 L. TO 3/4 AT ENDS

MIDDLE LINE STRAKE 4 1/2" 3/4" 3/4" AT ENDS

" IN COLLISION SPACE 4 1/2" 3/4" 3/4" IRON PLATE

TANK TOP PLATES IN COLLISION SPACE 1 1/2" IRON PLATE

" IN ENGINE ROOM 3/4" PLATE.

CENTRE GIRDER PLATE 4 1/2" 3/4" 3/4"  
TO 3/4 L. TO 3/4 AT ENDS &  
IN COLLISION SPACE 4 1/2" 3/4" 3/4"  
IRON PLATE.

CENTRE GIRDER BOTTOM ANGLES 1 1/2" 3/4" 3/4"  
FOR 3/4 L. TO 3/4 AT ENDS.

## TANK RIVETING.

LANDINGS OF MIDDLE LINE STRAKE & STRAKE NEXT TO

IT TO BE DOUBLE RIVETED ALL FORWARD, REMAINING

LANDINGS SINGLE RIVETED ALL FORWARD.

BUTTS OF TANK TOP DOUBLE RIVETED ALL FORWARD.

" MARGIN PLATE " " " " "

" CENTRE GIRDER TREBLE " " " " "

FLAT PLATE KEEL 4 1/2" 3/4" 3/4" FOR

3/4 L. TO 3/4 AT ENDS.

KEEL DOUBLING FOR 3/4 L. &

BUTTS OF KEEL PLATES TO BE

DOUBLE STRAPPED TREBLE

RIVETED.

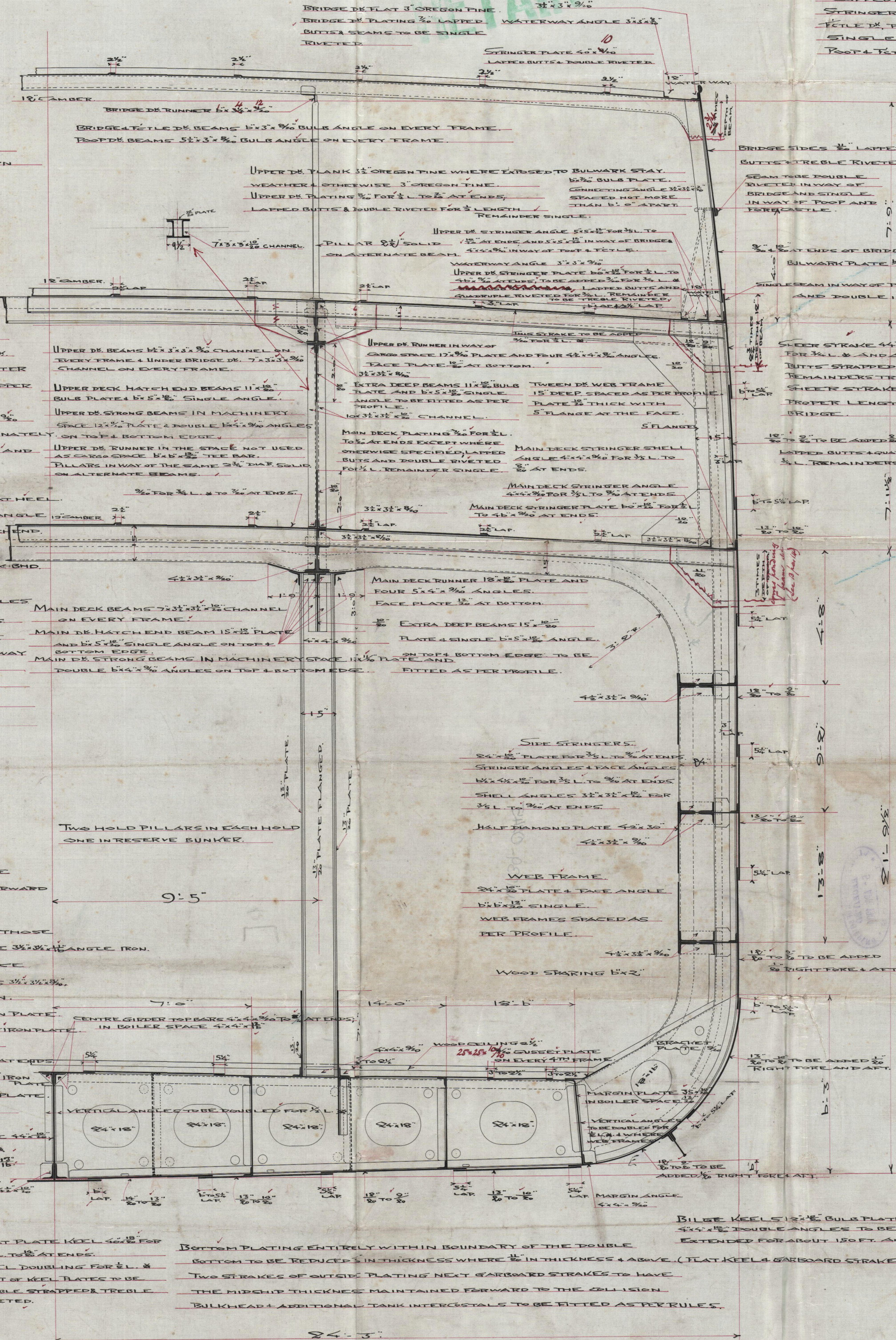
BOTTOM PLATING ENTIRELY WITHIN BOUNDARY OF THE DOUBLE

BOTTOM TO BE REDUCED IN THICKNESS WHERE 3/4" IN THICKNESS & ABOVE. (FLAT KEEL & GARBAGE STRAKES EXCEPTED).

TWO STRAKES OF OUTSIDE PLATING NEXT GARBAGE STRAKES TO HAVE

THE MIDSHIP THICKNESS MAINTAINED FORWARD TO THE COLLISION

BULKHEAD & ADDITIONAL TANK INTERCOSTALS TO BE FITTED AS PER RULES.



STRINGER PLATES ON TAIL & POOP DECK 3/4" 3/4" 3/4"  
LAPPED BUTTS & DOUBLE RIVETED.  
STRINGER ANGLES ON TAIL & POOP DECK 3/4" 3/4" 3/4"  
TILE DE PLATING 3/4" LAPPED BUTTS & SEAMS TO BE  
SINGLE RIVETED.  
POOP & TAIL DECK PLANK 3" OREGON PINE.

BRIDGE SIDES 1/2" LAPPED  
BUTTS TREBLE RIVETED  
SEAM TO BE DOUBLE  
RIVETED IN WAY OF  
BRIDGE AND SINGLE  
IN WAY OF POOP AND  
FORECASTLE.

3/4" AT ENDS OF BRIDGE LAPPED BUTTS & DOUBLE RIVETED.  
BULKWARK PLATE 1/2" BUTT STRAPPED & DOUBLE RIVETED.

SINGLE SEAM IN WAY OF POOP & FORECASTLE.  
AND DOUBLE IN WAY OF BRIDGE.

SHEER STRAKE 4 1/2" 3/4" 3/4" AT ENDS TO BE ADDED  
FOR 3/4 L. & ANGLES 3/4" FOR 3/4 LENGTH.  
BUTTS STRAPPED & QUADRUPLE RIVETED FOR 3/4 LENGTH  
REMAINDERS TREBLE RIVETED.  
SHEER STRAKE TO BE DOUBLED FOR  
PROPER LENGTH AT BREAK OF  
BRIDGE.

1 1/2" 3/4" 3/4" TO BE ADDED FOR 3/4 L.  
LAPPED BUTTS QUADRUPLE RIVETED FOR  
3/4 L. REMAINDERS TREBLE RIVETED.

MAIN DECK STRINGER SHELL  
ANGLE 4 1/2" 3/4" 3/4" FOR 3/4 L. TO  
3/4 AT ENDS.  
MAIN DECK STRINGER PLATE 1 1/2" 3/4" 3/4" FOR 3/4 L. TO  
3/4 AT ENDS.

MAIN DECK RUNNER 18" PLATE AND  
FOUR 5 1/2" 3/4" 3/4" ANGLES.  
FACE PLATE 3/4" AT BOTTOM.

EXTRA DEEP BEAMS 15 1/2" 3/4" 3/4"  
PLATE & SINGLE 1 1/2" 3/4" 3/4" ANGLE.  
ON TOP & BOTTOM EDGE TO BE  
FITTED AS PER PROFILE.

SIDE STRINGERS.  
24 1/2" PLATE FOR 3/4 L. TO 3/4 AT ENDS  
STRINGER ANGLES & FACE ANGLES  
1 1/2" 3/4" 3/4" FOR 3/4 L. TO 3/4 AT ENDS  
SHELL ANGLES 1 1/2" 3/4" 3/4" FOR 3/4 L. TO 3/4 AT ENDS  
HALF DIAMOND PLATE 4 1/2" 3/4" 3/4" FOR 3/4 L. TO 3/4 AT ENDS

WEB FRAME.  
24 1/2" PLATE & FACE ANGLE  
1 1/2" 3/4" 3/4" SINGLE  
WEB FRAMES SPACED AS  
PER PROFILE.

WOOD SHAKING 15" 3/4" 3/4"  
WOOD COLLINGS 15" 3/4" 3/4"  
QUICK PLATE 15" 3/4" 3/4" ON EVERY 4TH FRAME  
MARGIN PLATE 15" 3/4" 3/4" IN COLLISION SPACE  
VERTICAL ANGLES TO BE DOUBLED FOR 3/4 L. &  
IN COLLISION SPACE 1 1/2" 3/4" 3/4" IRON PLATE.

1 1/2" 3/4" 3/4" TO BE ADDED  
FOR 3/4 L. TO 3/4 AT ENDS.

BILGE KEELS 1 1/2" 3/4" 3/4" BULGE PLATE &  
4 1/2" 3/4" 3/4" DOUBLE ANGLES TO BE  
EXTENDED FOR ABOUT 150 FT. AND SHIP'S

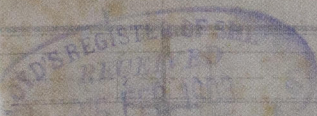
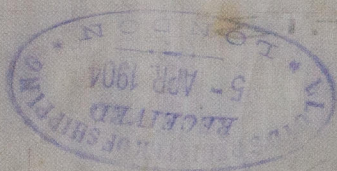
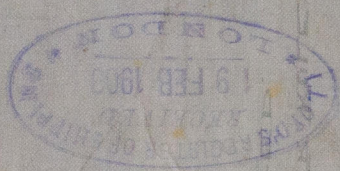


Mitru Bishi

No 152

Midship Seaman

St. Ceylon Harb  
Ray 302.



W1239-0245



© 2020

Lloyd's Register  
Foundation