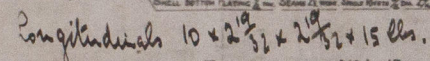
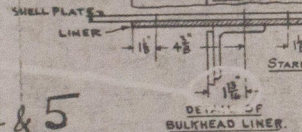


DECK PLATING PLAN



PORT SIDE

Hand-drawn plan of the Port Side of the ship, showing the layout of the deck and cabin structure. The drawing is oriented with the bow at the top. It shows a central corridor or deck area flanked by rows of rectangular structures, likely cabins or storage compartments. The label "PORT SIDE" is written vertically on the left. The label "BOW" is written at the top right. The label "AFT" is written at the bottom right. The drawing is a simple line sketch on a piece of paper.

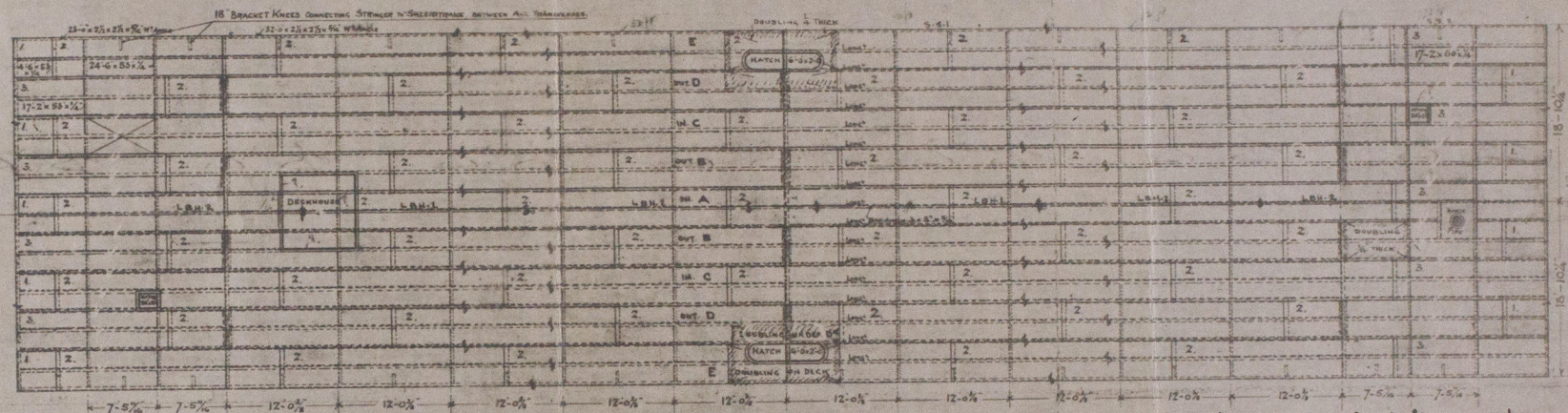
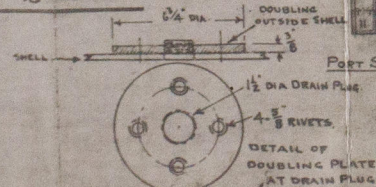


N^{os} 4 & 5

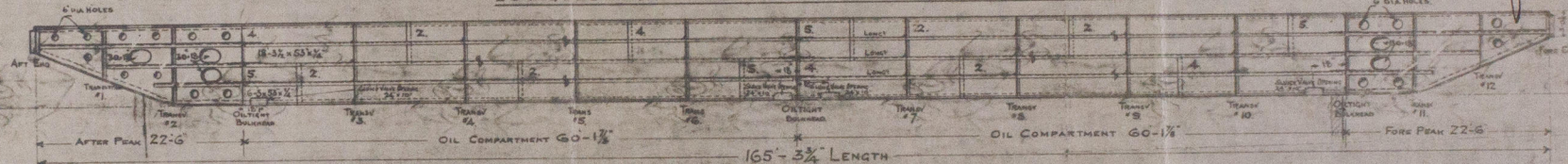
OIL BARGES.

LENGTH OVERALL	166'-3"
" OVER END PLATING	165'-3"
BREADTH OVERALL	38'-8"
" MOULDED	37'-8"
DEPTH AT CENTRE	8'-10"
" AT SIDE	8'-6"
DRAFT LOADED (at 125° True)	7'-7"
RISE OF FLOOR 2 ND BEAM CROP 2'	
LENGTH OF EACH OIL COMPART	60'-1"
TRANSVERSES SPACED APT.	12'-0"

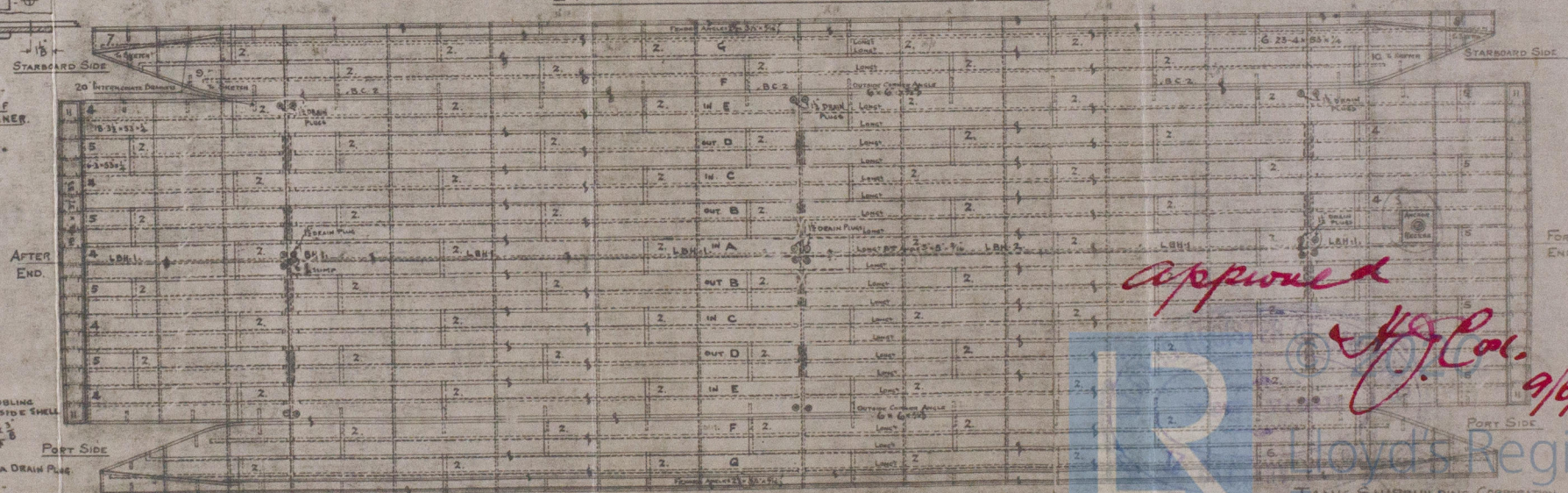
SCALE $\frac{1}{8}$ " = ONE FOOT.



LONGITUDINAL SECTION THROUGH CENTRE SHOWING LONGITUDINAL BULKHEAD



EXPANSION OF SHELL PLATING



Approved
W. J. Coe.


 Lloyd's Register
 TANK SHIPBUILDING CORPORATION
 NEWBURGH, N.Y.
 10964

W1233 - 0156

Tank Shipbuilding Corporation

W4

Profile Shell and Decks

"NAVEGADORA N: 75"

New York Rpt W. 139/5

Amended Copy approval plan

139/5

DETAIN

W1233-0156



© 2020

Lloyd's Register
Foundation