

755  
25

BOILER N° 755-56.

TO PASS LLOYDS REGISTER FOR  
A WORKING PRESSURE = 180 LBS.

HEATING SURFACE

IN TUBES =	1460 <sup>sq</sup> ft
IN COMB. CH. =	205 <sup>sq</sup> ft
IN FURNACES =	120 <sup>sq</sup> ft
IN ONE BOILER =	1785 <sup>sq</sup> ft
IN TWO BOILERS =	3570 <sup>sq</sup> ft

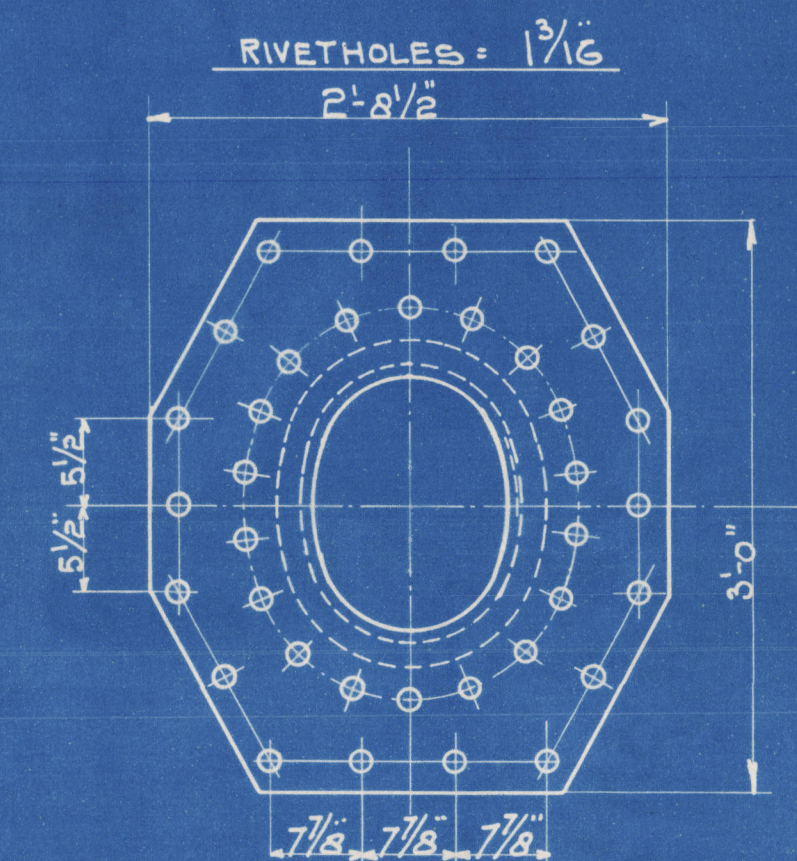
GRATE SURFACE = 53,5 <sup>sq</sup>ft

GR. SURFACE = 1  
H. SURFACE = 33,5

SCALE 1" = 1 FOOT.

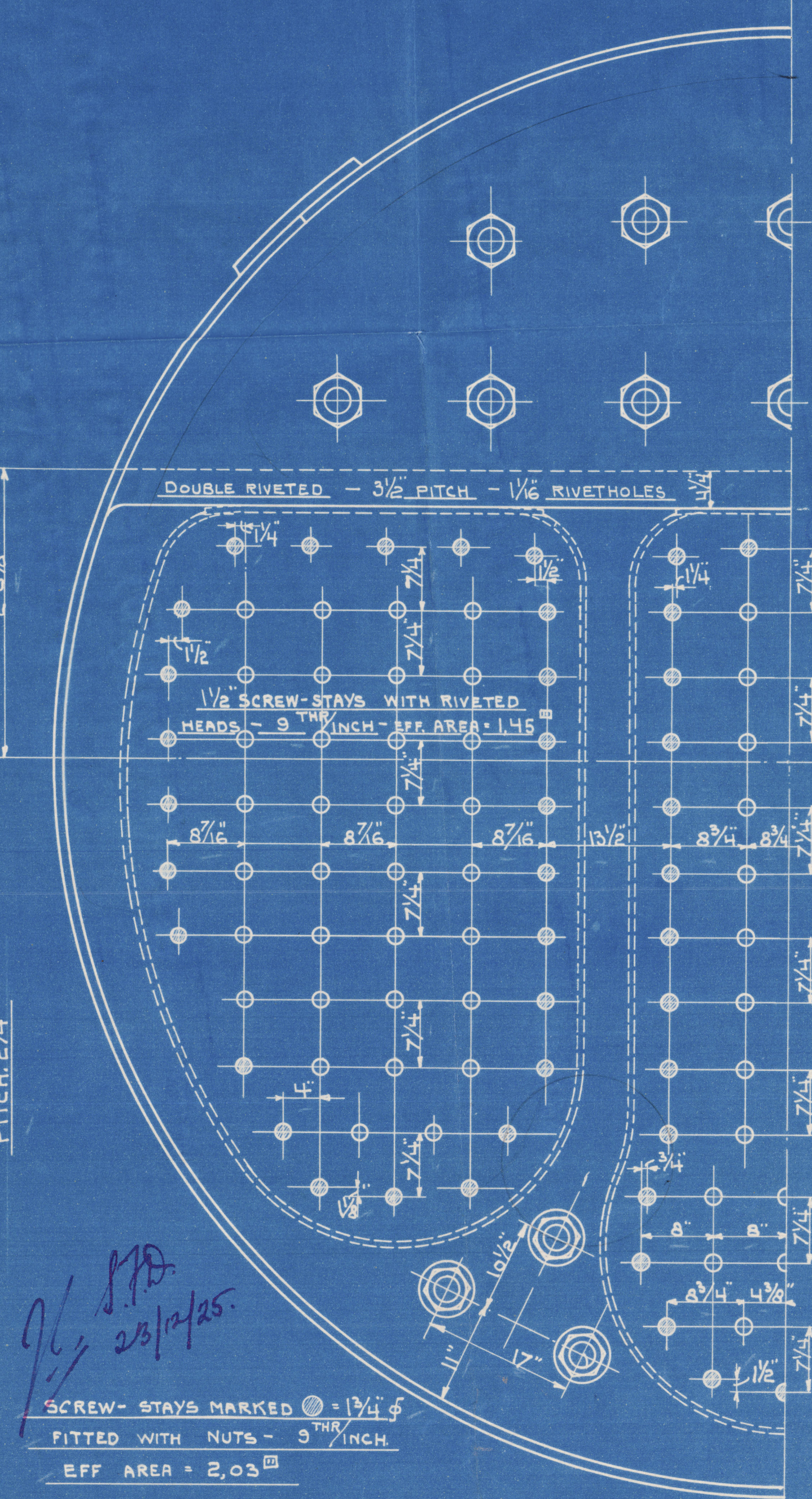
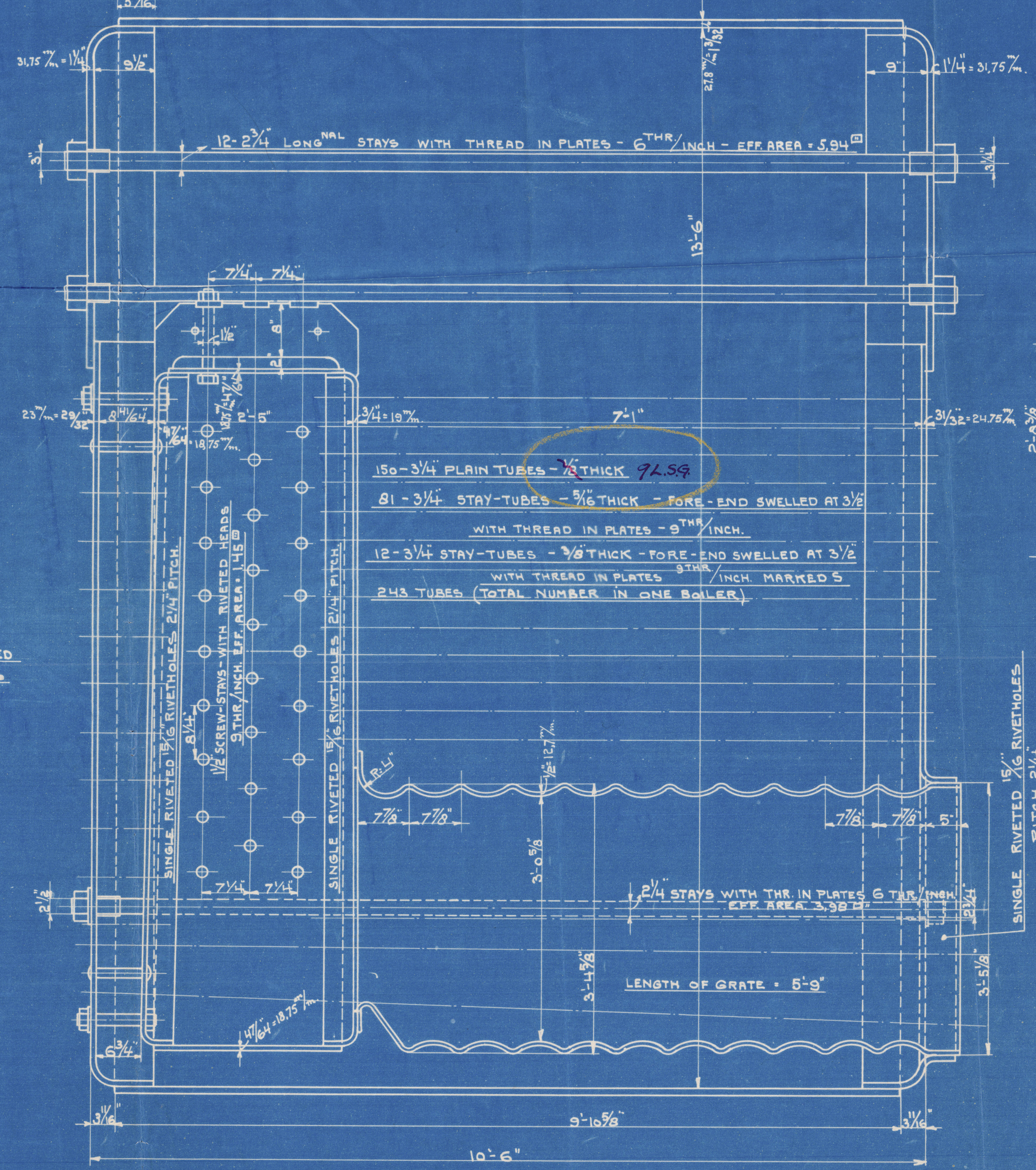
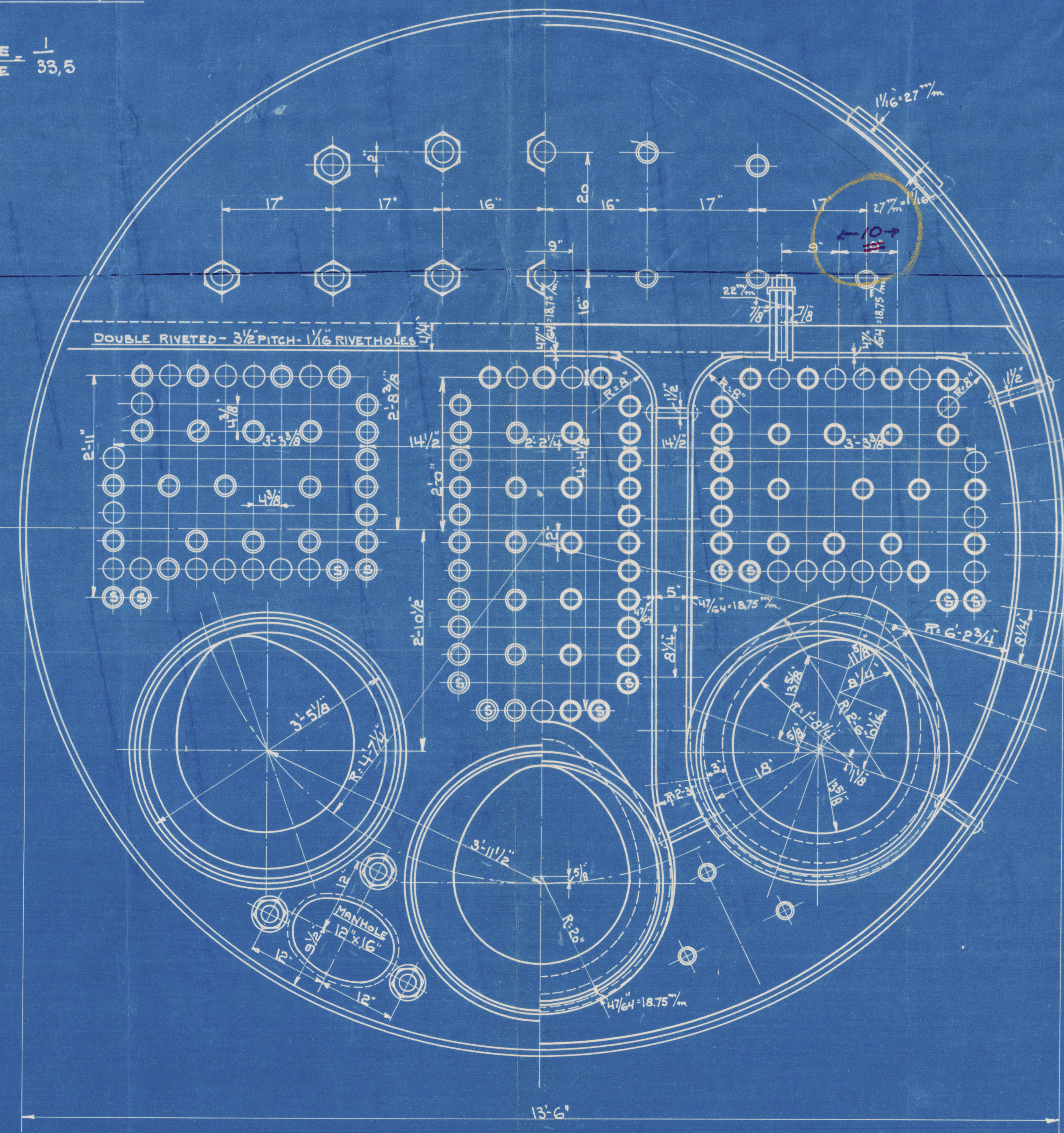
LONG NAL. JOINT.  
SHELL PLATE: 1 3/32  
INNER BUTT STRAP: 1 1/16  
OUTER BUTT STRAP: 1 1/16  
RIVET HOLES: 1 1/16  
% PLATE = 84,9  
% RIVETS = 95,4

MANHOLE - STIFFENING PLATE 1 3/32 = 27,8 <sup>mm</sup>



TENSILE STRENGTH

	MATERIAL	TONS/IN <sup>2</sup>	MIN. ELONGATION
SHELL PLATES, BUTT STRAPS & MANHOLE	S.M. STEEL	29-33	20%
END PLATES	"	26-30	23%
COMB. CHAMBER - PLATES	"	26-30	23%
FURNACES	"	26-30	23%
LONG NAL STAYS	"	28-32	20%
SCREW STAYS	"	26-30	23%
RIVETS	"	27-30	25%
TUBES	IRON.	22	12%
GIRDERS	S.M. STEEL	28-32	20%



SCREW STAYS MARKED = 1 3/4"  $\phi$   
FITTED WITH NUTS - 9 <sup>THR</sup>/INCH  
EFF AREA = 2,03 <sup>sq</sup>ft



Boilers Nos 755/6.

proposed to be fitted in  
Messrs. W.V. Wilton's Engineering  
& Slipway Co's Yard No. 312.

8/5 Kian Gwan

GEN. BOX NO 790

RETAIN

W1233-0047



© 2020

Lloyd's Register  
Foundation