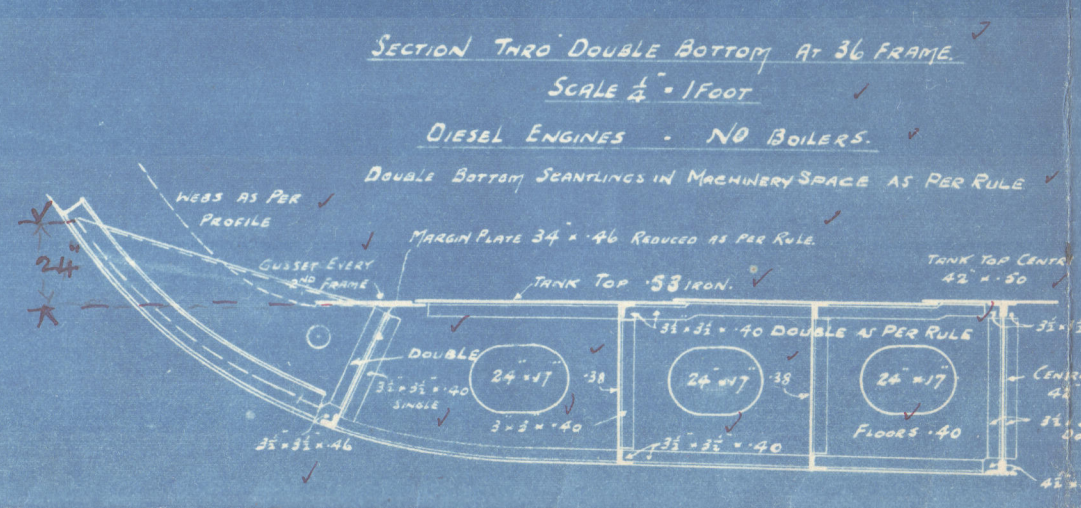
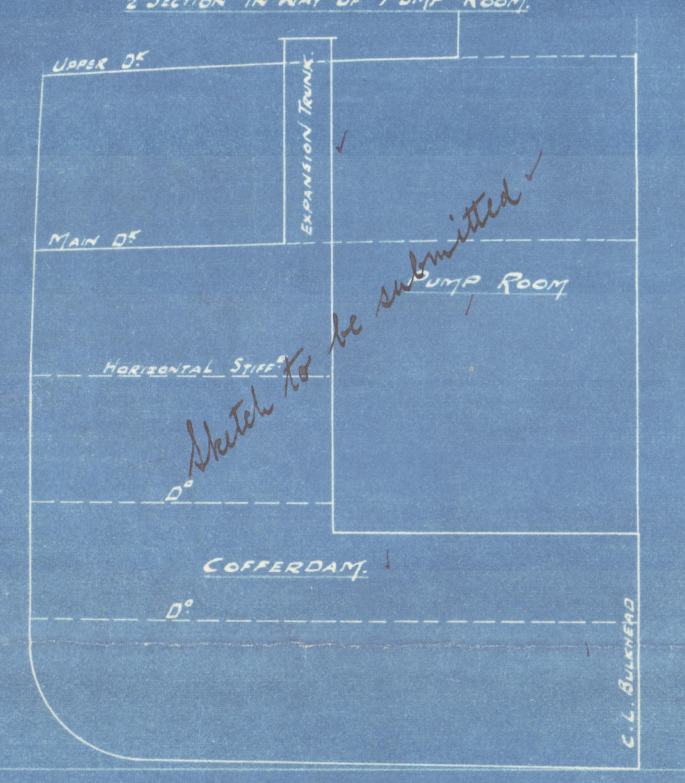
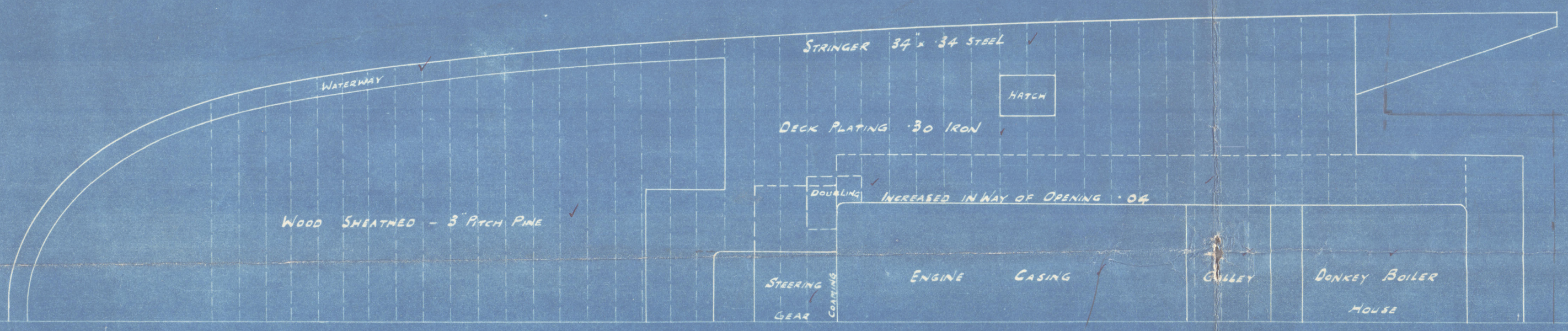
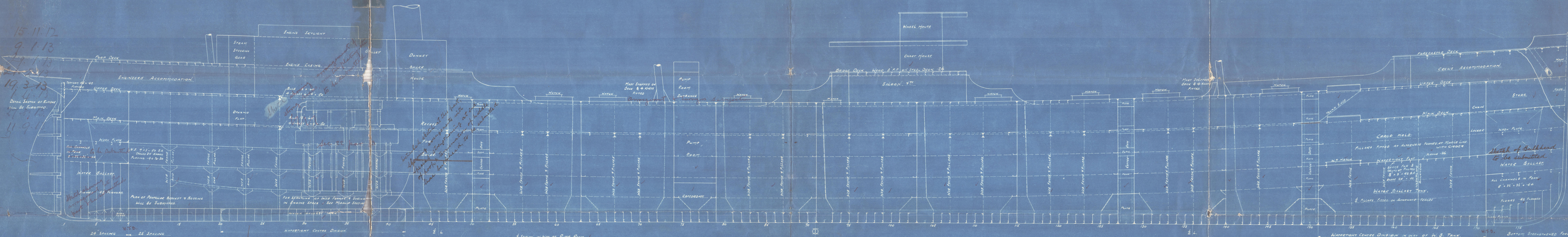
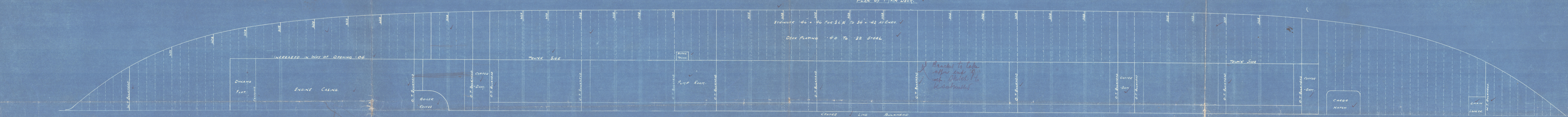
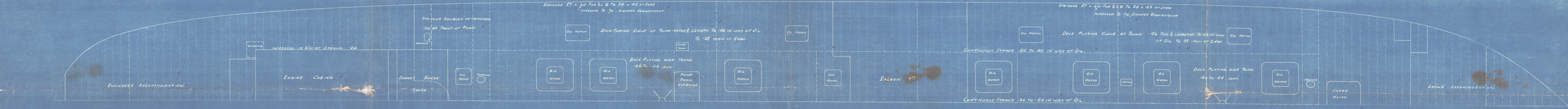
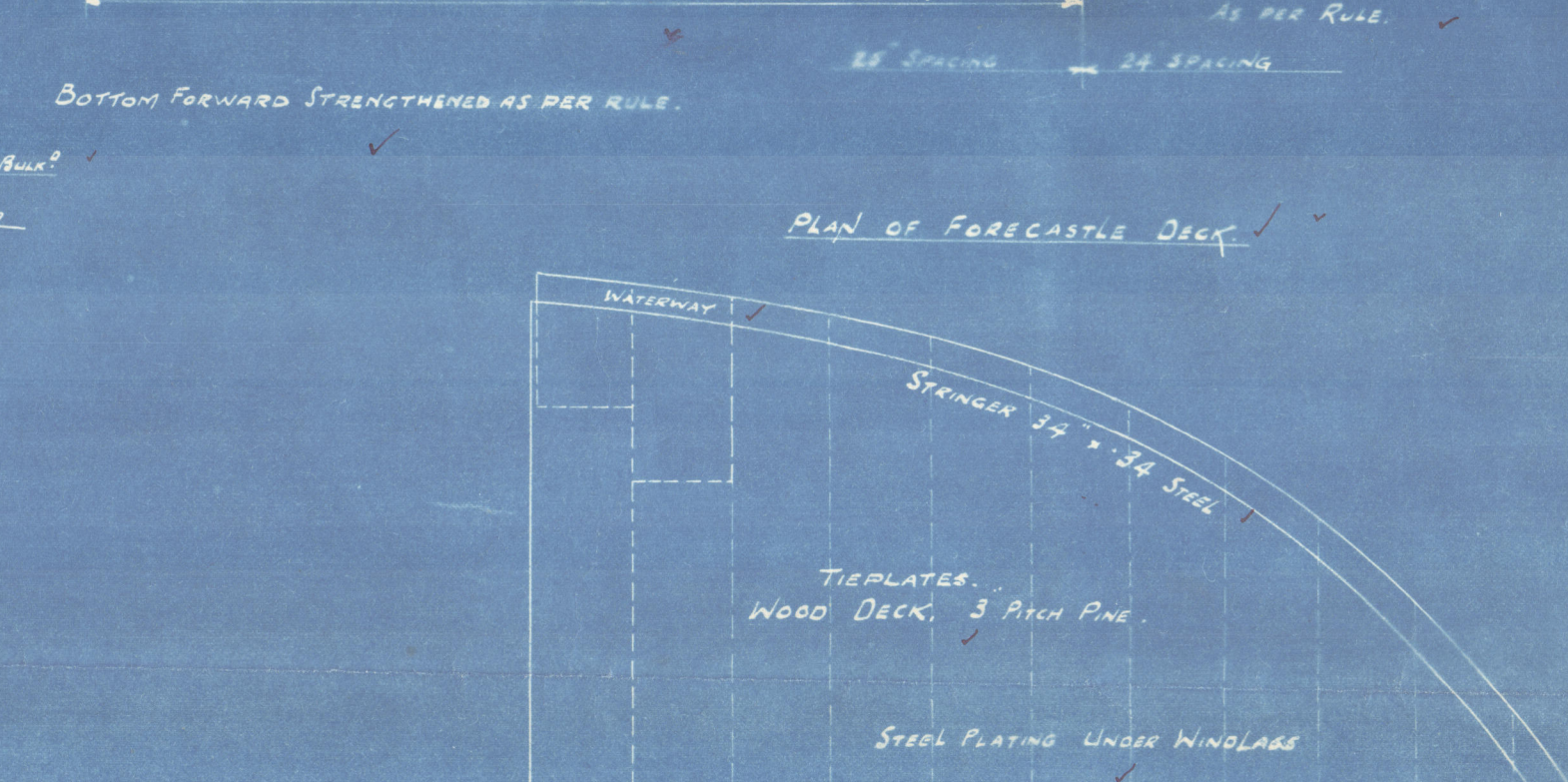
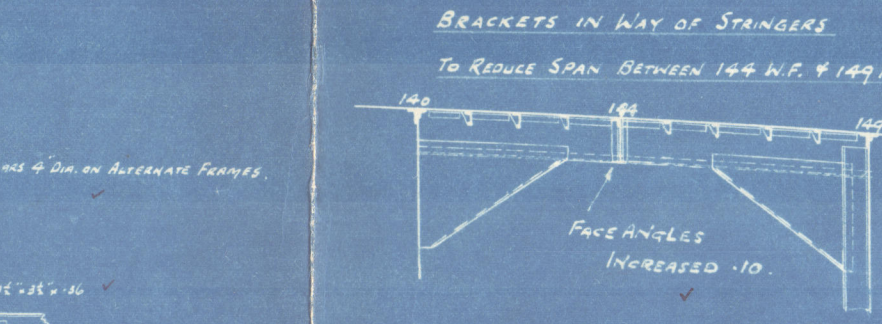
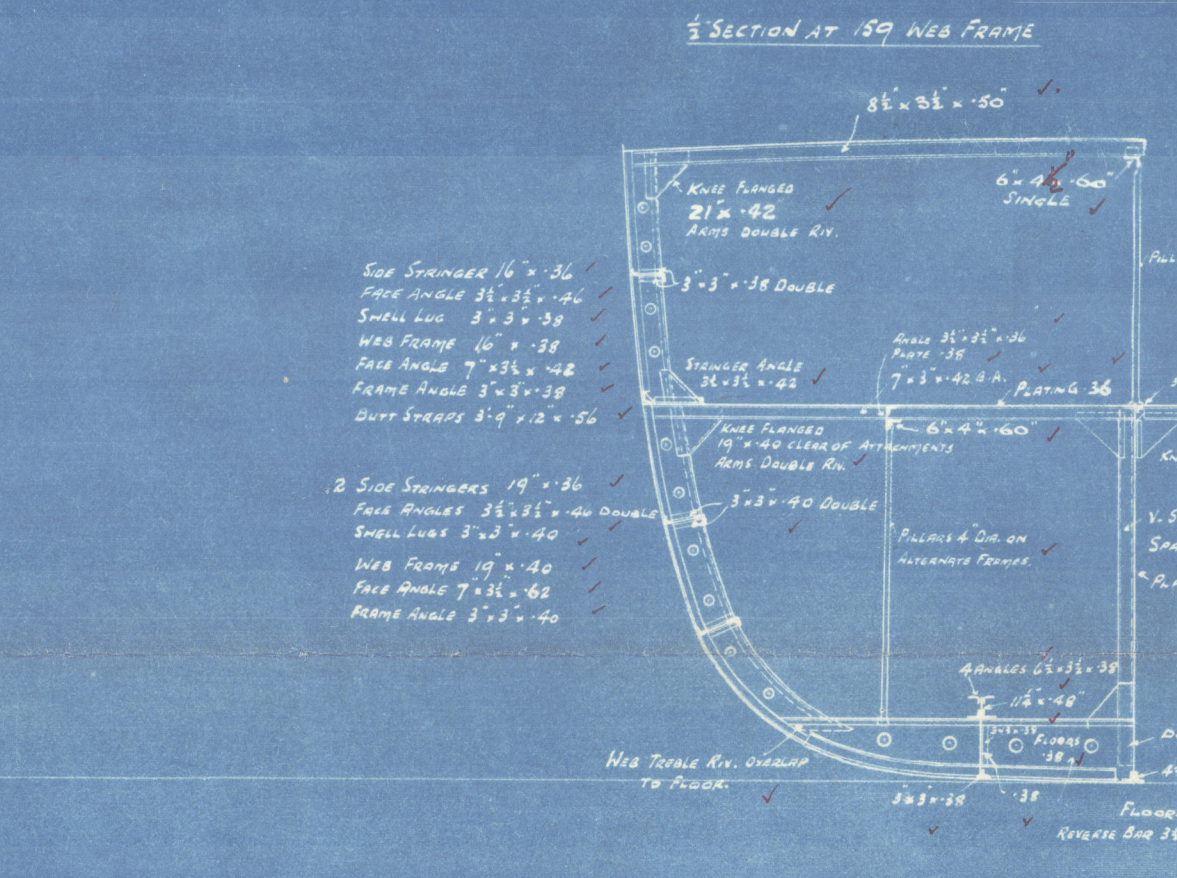


15.11.12  
9.1.13  
19.3.13  
14.13  
11.9.13



**T.M.V. N°189.**  
**PROFILE & DECK PLANS.**

**PRINCIPAL DIMENSIONS.**  
LENGTH B.P. 375' 0"  
BREADTH MMD 57' 0"  
DEPTH MMD 29' 0"  
Scale 1/8" = 1 Foot



C.B.  
15.11.12



Ligne Iron S. B. Co. Ltd

No 189

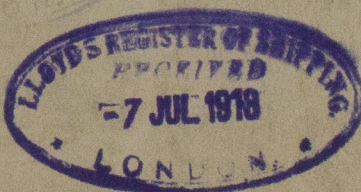
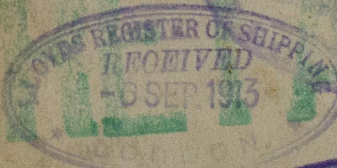
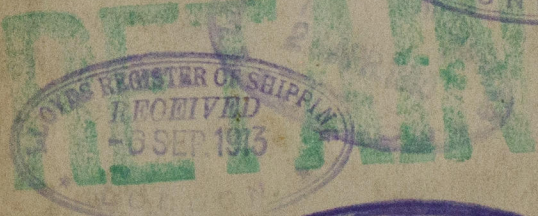
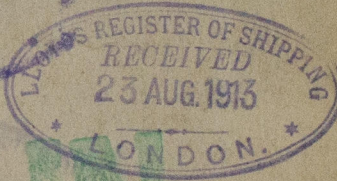
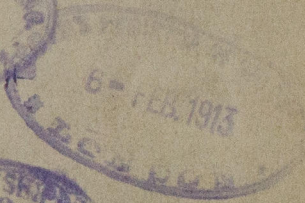
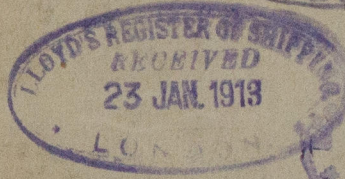
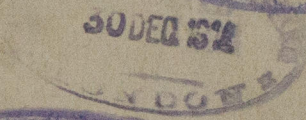
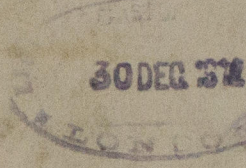
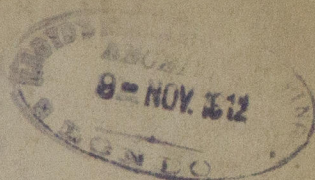
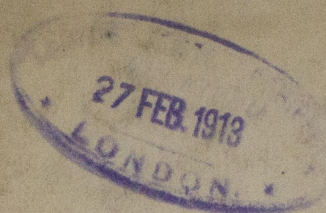
Twin Screw Oil Tank Motor Vessel.

Plan of Profile & Deck Plans  
brought up to date.

Now

VALERIAN KUIBESHEV

D. 92. B.



S.S. ELBRUZ

NEWCASTLE-ON-TYNE.

Report No 65870

D. 92. B.

W1232 - 0111



PHOTO PRINT.  
J. HALDEN & Co., Ltd.,  
Newcastle-on-Tyne.



© 2021

Lloyd's Register  
Foundation