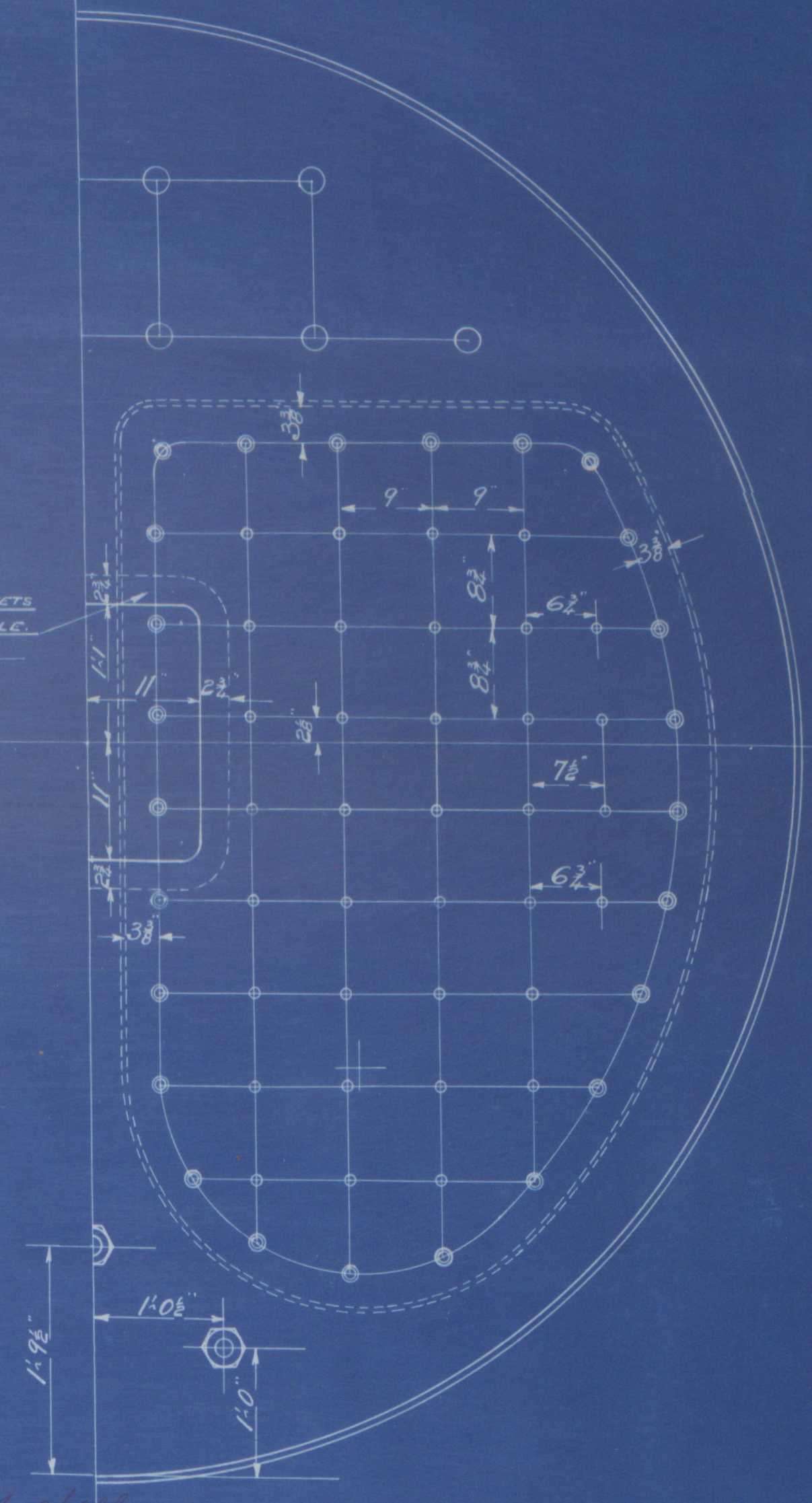
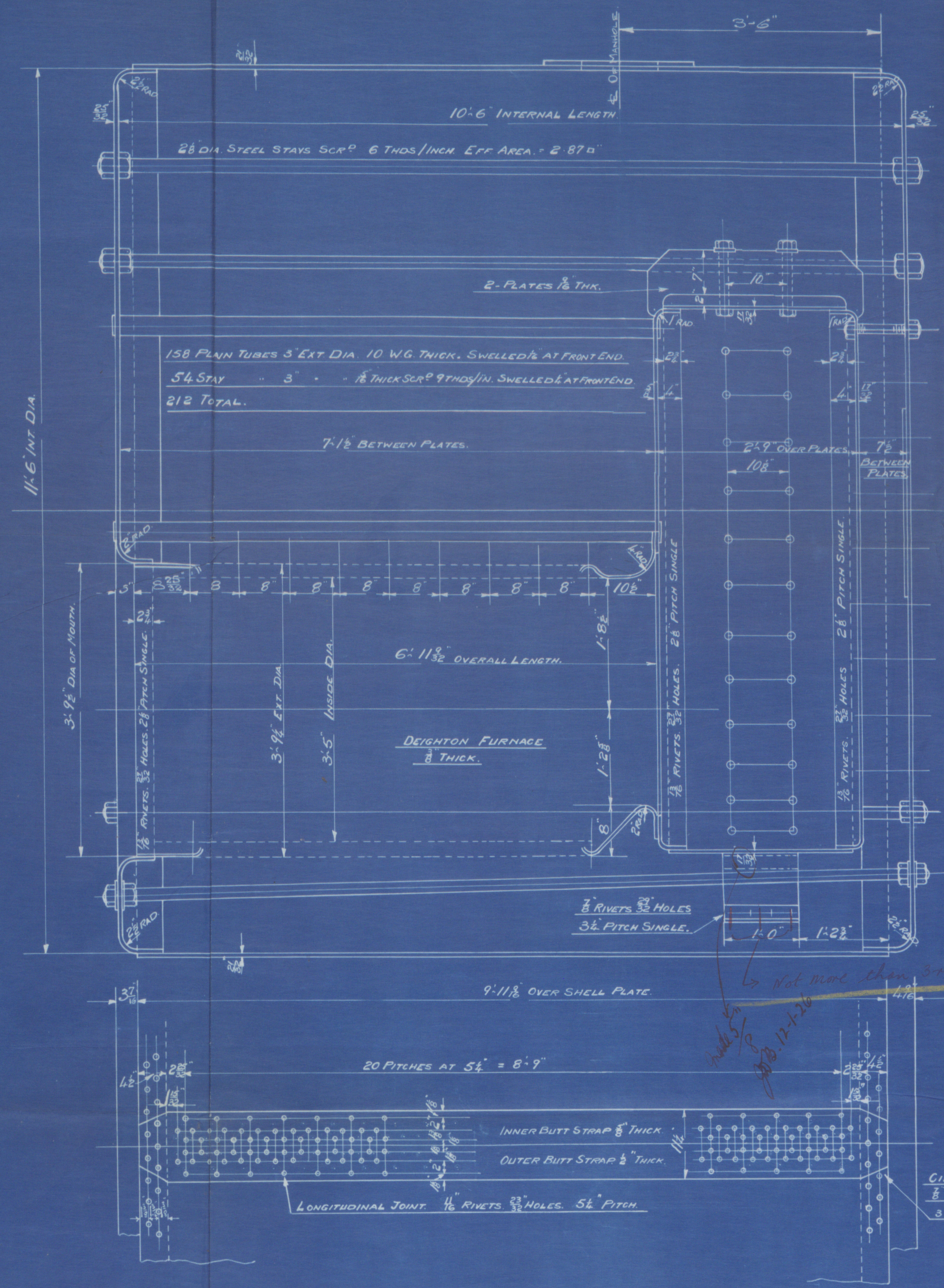
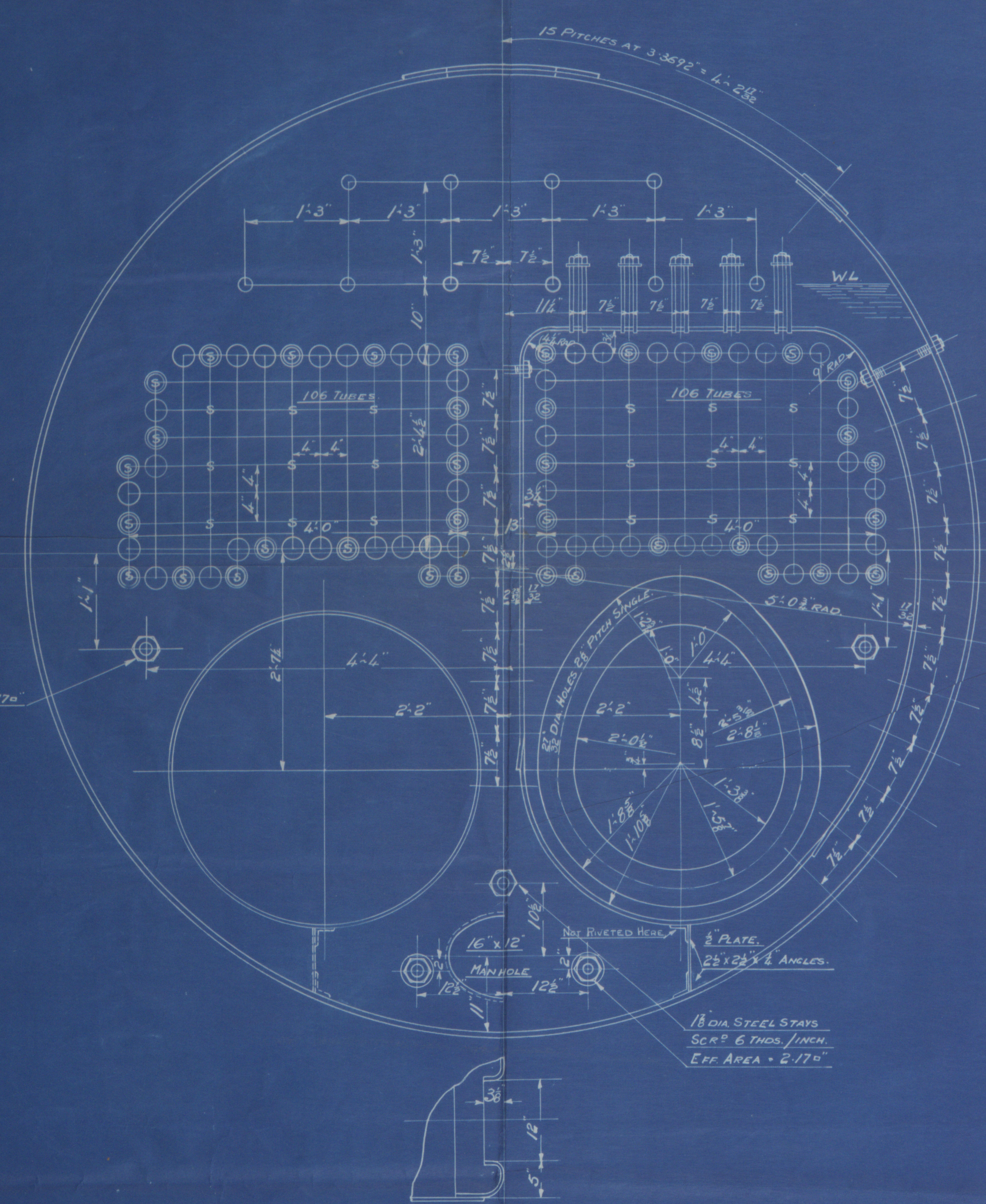
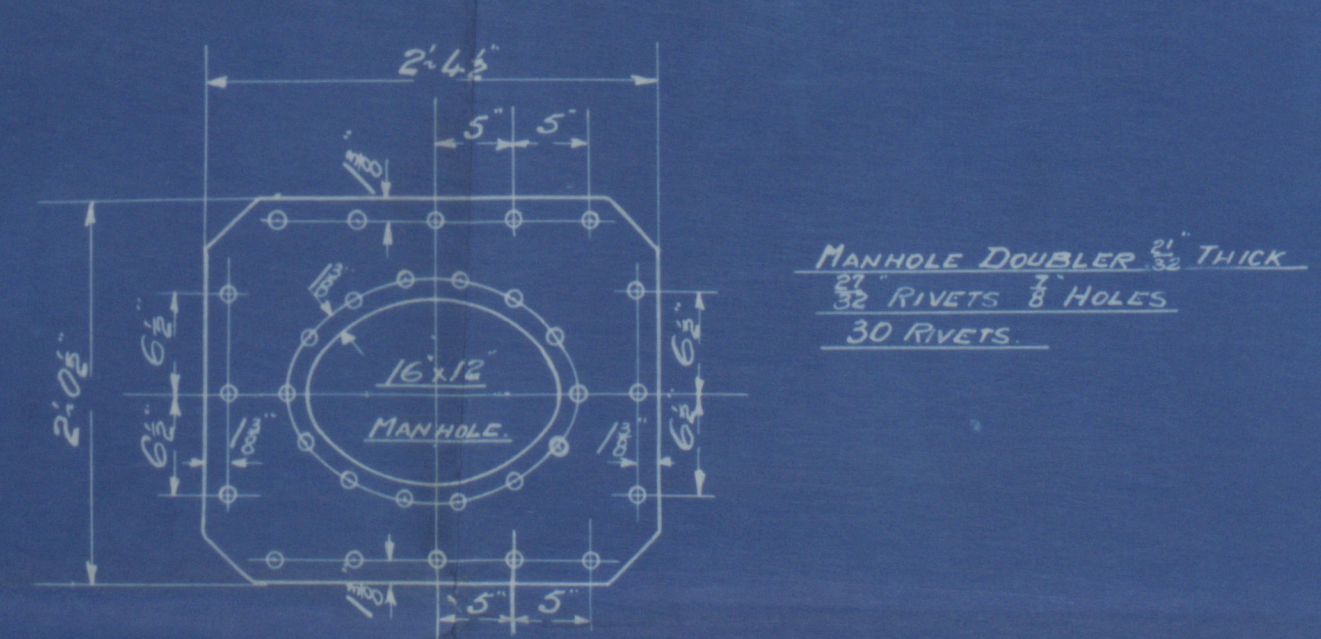


4/1/26



PARTICULARS	AREA
HEATING SURFACE TUBES	1186 Sq Ft
" " PLATES	258.5 "
" " TOTAL	1444.5 "
GRATE AREA BARS	178 Cu Ft
STEAM SPACE	10.4 Sq Ft

PERCENTAGES	
LONGITUDINAL PLATE	86.5
" RIVET	90.5
" COMBINED	90.9
CIRCUMFERENTIAL PLATE	73.2
" RIVET	45.8

LIMITS OF TENSILE STRENGTH	
SHELL PLATES & BUTT STRAPS	28-32 TONS
GIRDERS & LONG STAYS	28-32 "
END PLATES & COMB CHAM PLATES	26-30 "
FURNACES	26-30 "
RIVETS	26-30 "

COMB. CHAMBER STAYING			
POSITION	MARK	PARTICULARS	AREA
BACK MARGINAL	⊙	1/8" DIA 9 THDS/INCH	1.73 Sq/Inch
" INNER	○	1/8" " 9 " "	1.19 " "
SIDES & GIRDERS	○	1/8" " 9 " "	1.19 " "

MARINE R.T. BOILER N° 1158.  
11'-6" INT. DIA. x 10'-6" INT. LENGTH.  
TO BE LLOYD'S SURVEY FOR 120 LBS/SQ IN.  
HYDRAULIC TEST PRESSURE 230 LBS/SQ IN.  
SCALE: 1" = 1 FOOT.



Messrs. Bow, The Lachlans.  
Boiler N<sup>o</sup> 1158  
Amended Plan

Loch Long  
GLASGOW REPORT No. 45711



© 2021

Lloyd's Register  
Foundation

W1232-0006