

# N<sup>o</sup> 183. HULL SECTIONS. SINGLE SCREW TUG.

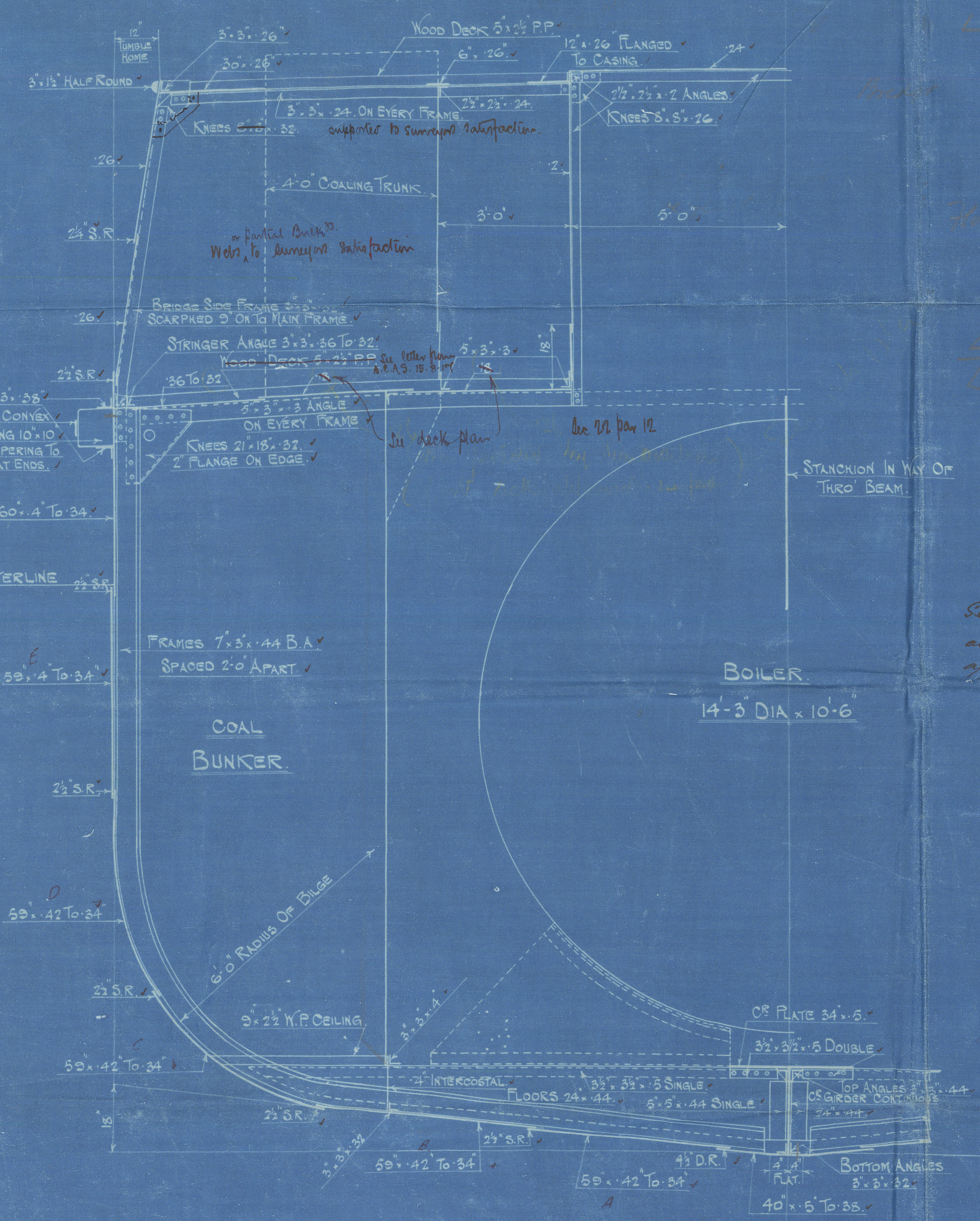
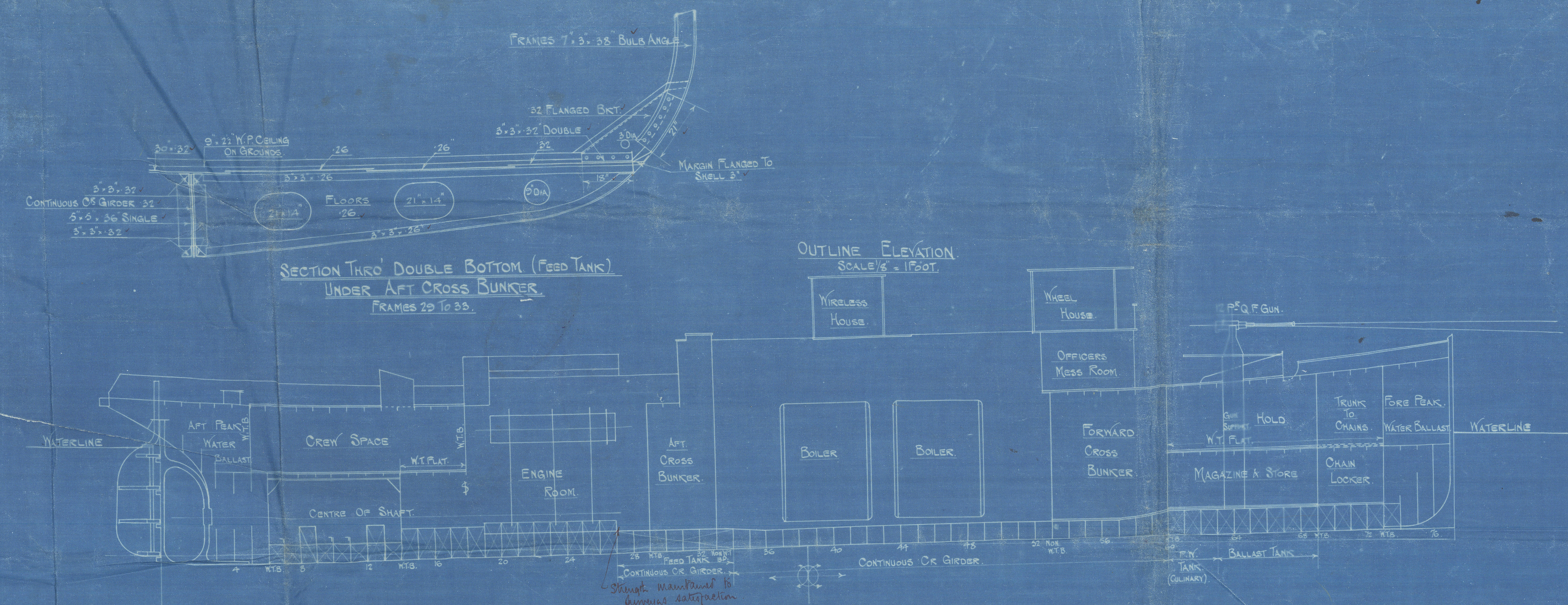
DIMENSIONS: 155'-0" x 31'-0" x 17'-0" M.L.O.

SCALE 1/2" = 1 FOOT.



Class A.1. for Towing Purposes.

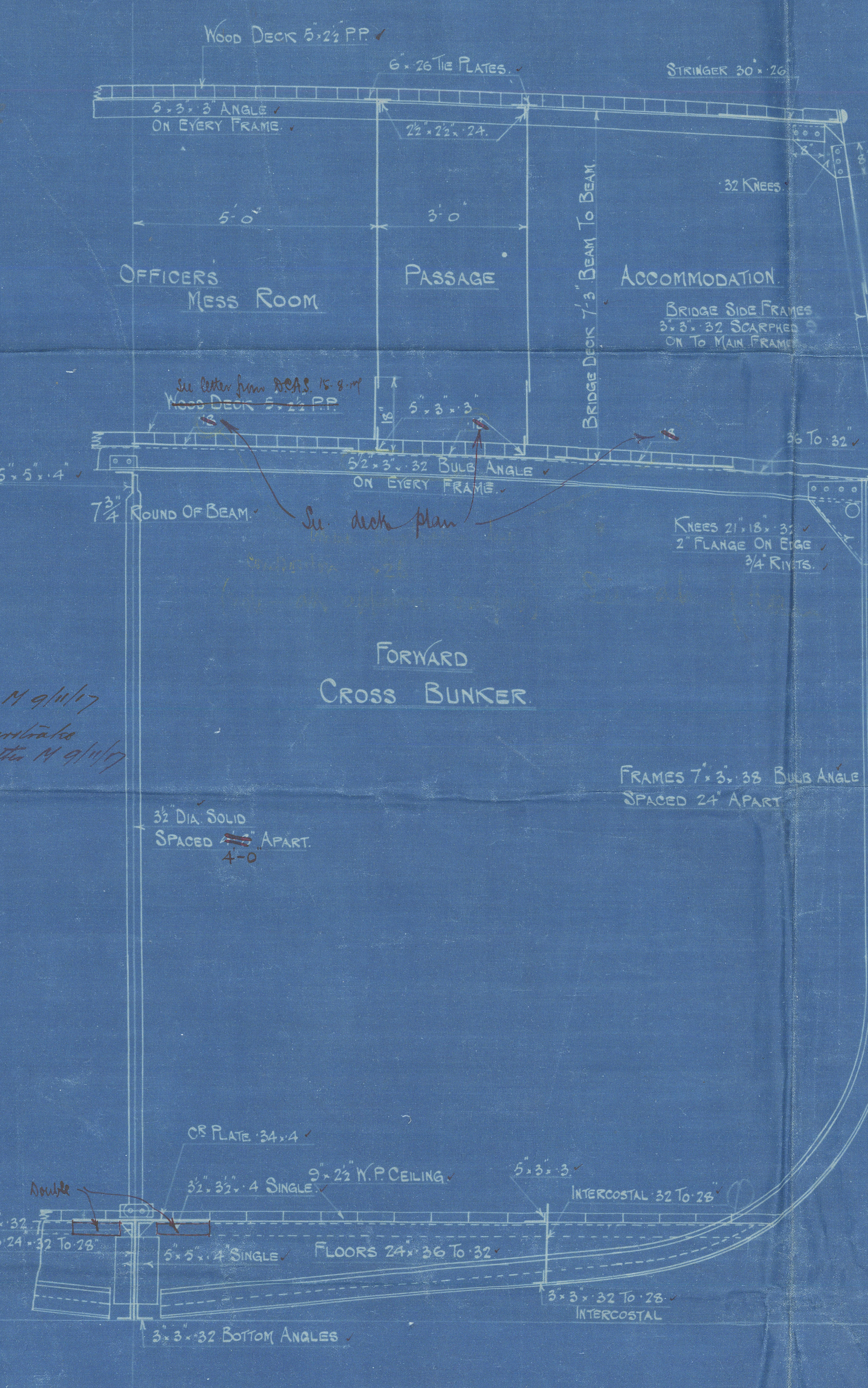
Equipment as per Specification.



SECTION THREE BOILER ROOM.

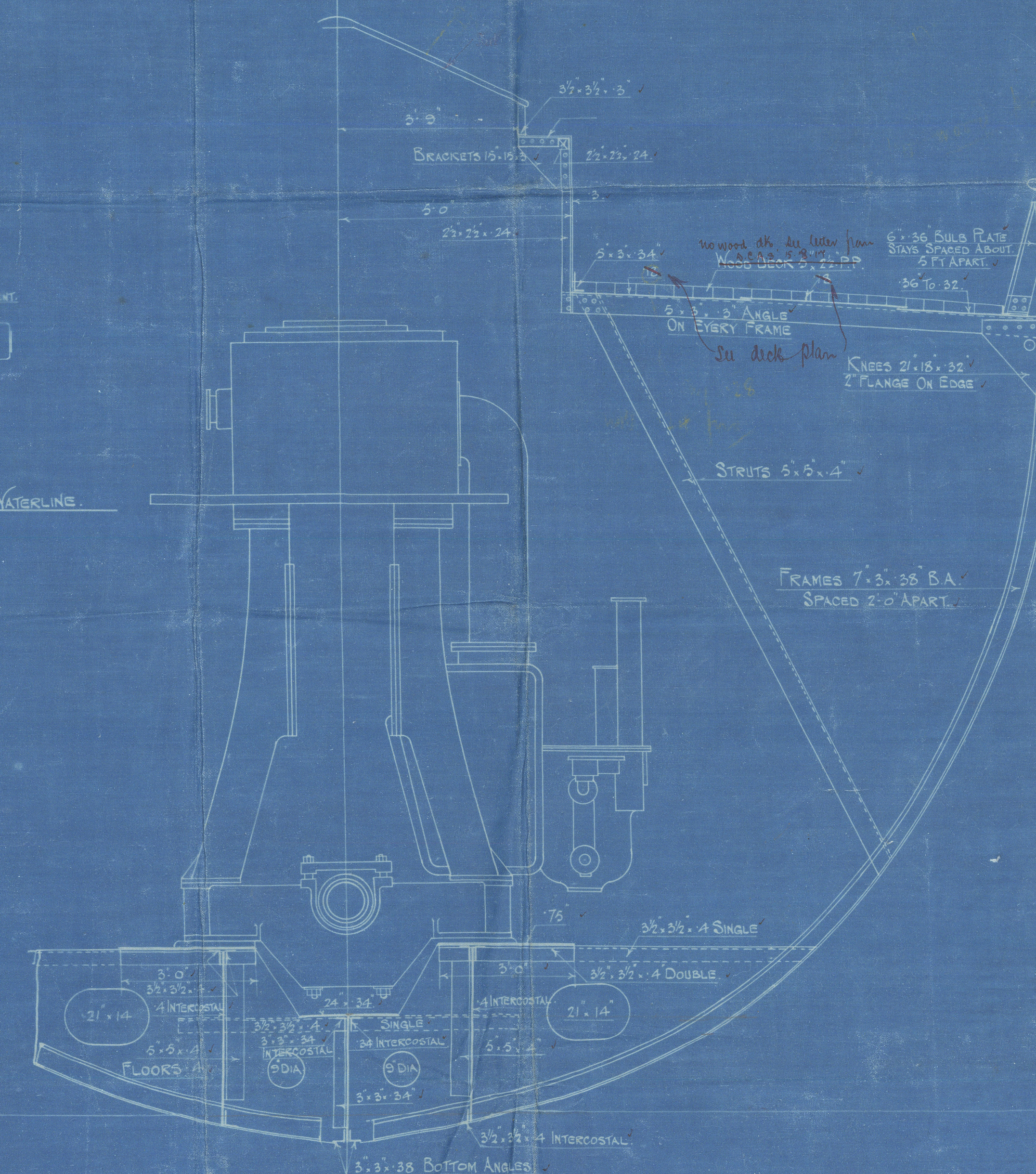
FRAMES 34 TO 52 (34 M.F. FLOOR)

**RIVETTING**  
See rivetting table appended. See also M. 9/11/17  
also shell built machine and other details  
appended should be noted by M. 9/11/17



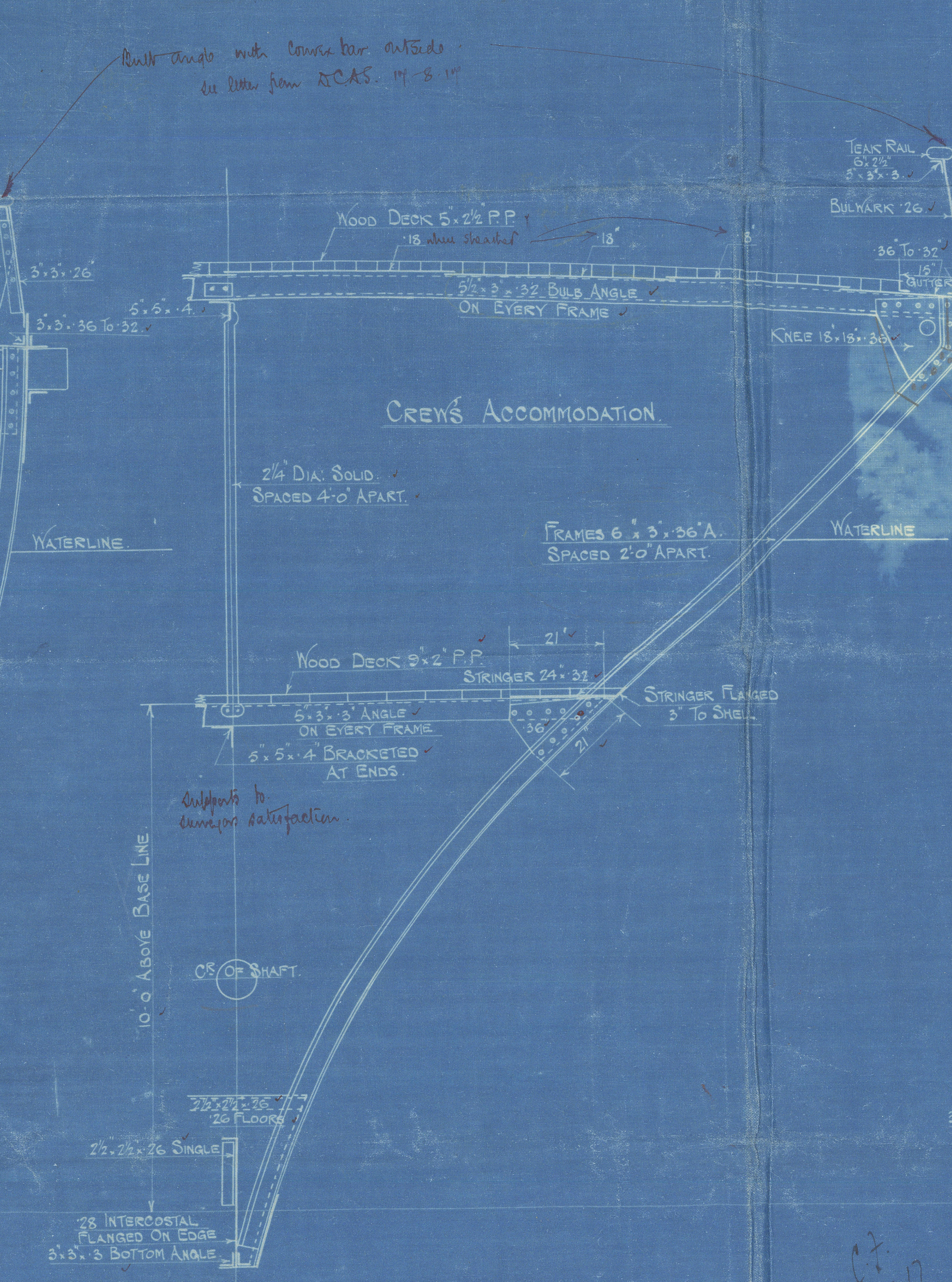
SECTION THREE FORWARD CROSS BUNKER

FRAMES 54 TO 59



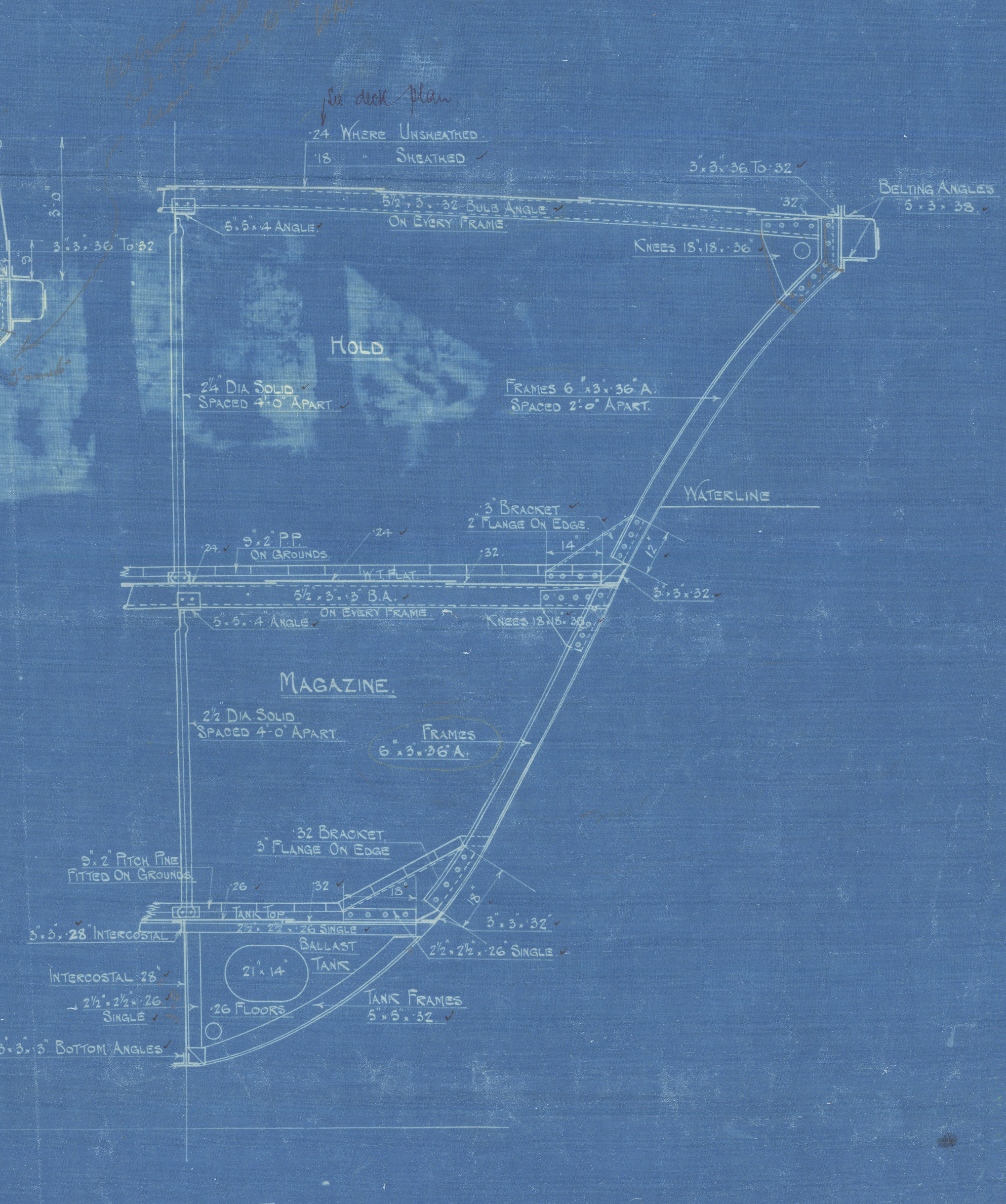
SECTION THREE ENGINE ROOM

FRAMES 20 TO 29



SECTION AT AFT-END

FRAMES 6 TO 13



SECTION AT FORE-END

FRAMES 61 TO 65



W1230-0074

Aug. 21<sup>st</sup> 183.

(Racia Type).

building by.

Livingstone & Cooper Ltd  
Aberdeen. Hull.

for.

The Controller of Shipping

MIDSHIP SECTION.

&

OTHER SECTIONS

s/s 'Sancy' Hull Fkt Rpt No 30592

s/s 'Sancy' Hull Rpt No 30643.

