

FABRIEKSNUMMER 767

MATERIAAL

Shellplaten, doublers, round manholes, windows & strips.
 ROMPLATEN, VERSTUIVINGERING, BRUGTEUNEN EN STRIPEEN.
 MINIMUM TREKSTERKTE = 44 K.G.P. $\frac{1}{2}$ " = 28 TON P.D.
 " " " = 20% elongation
 Remainder platen
 OVERIGE PLATEN
 MINIMUM TREKSTERKTE = 41 K.G.P. $\frac{1}{2}$ " = 26 TON P.D.
 " " " = 23% elongation

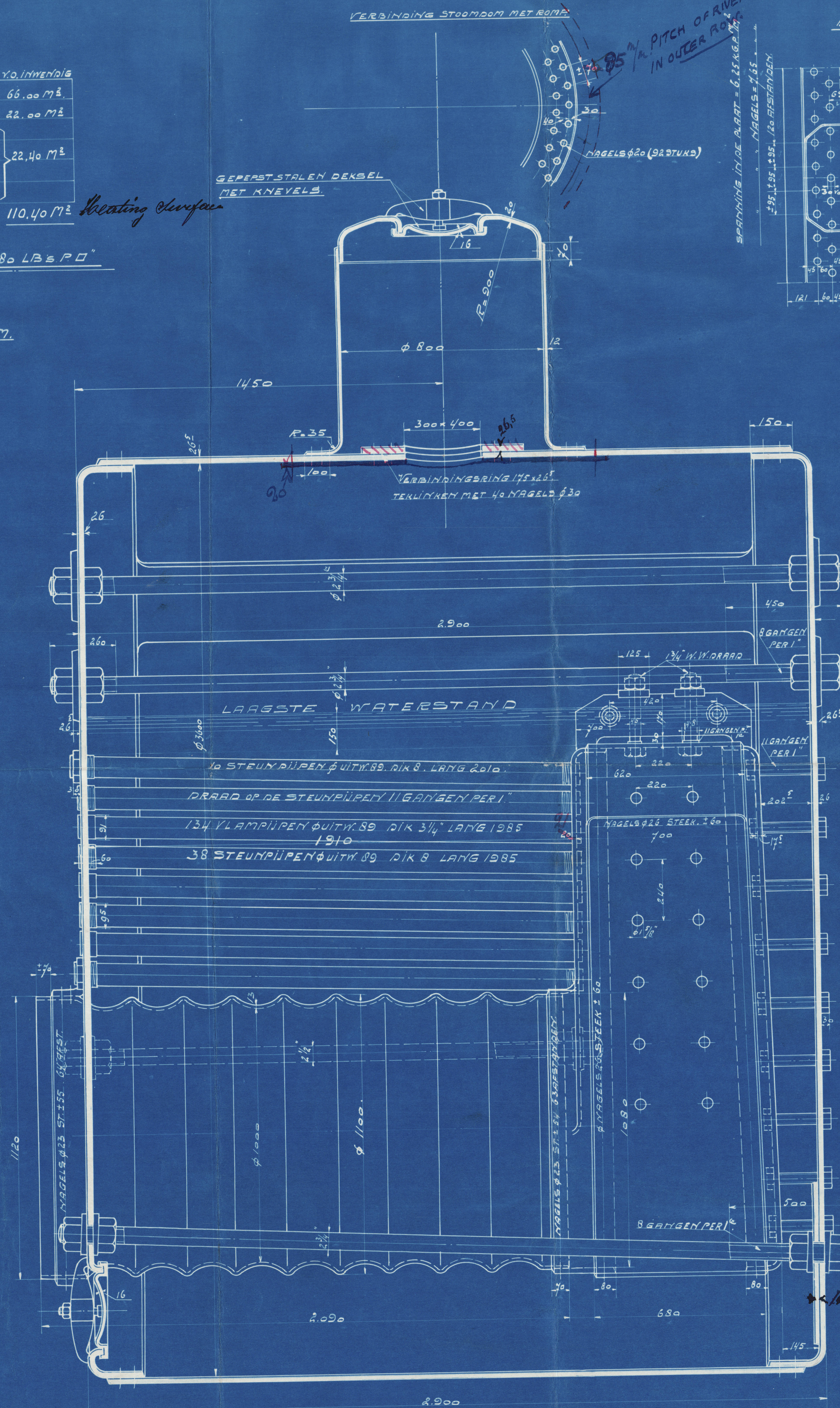
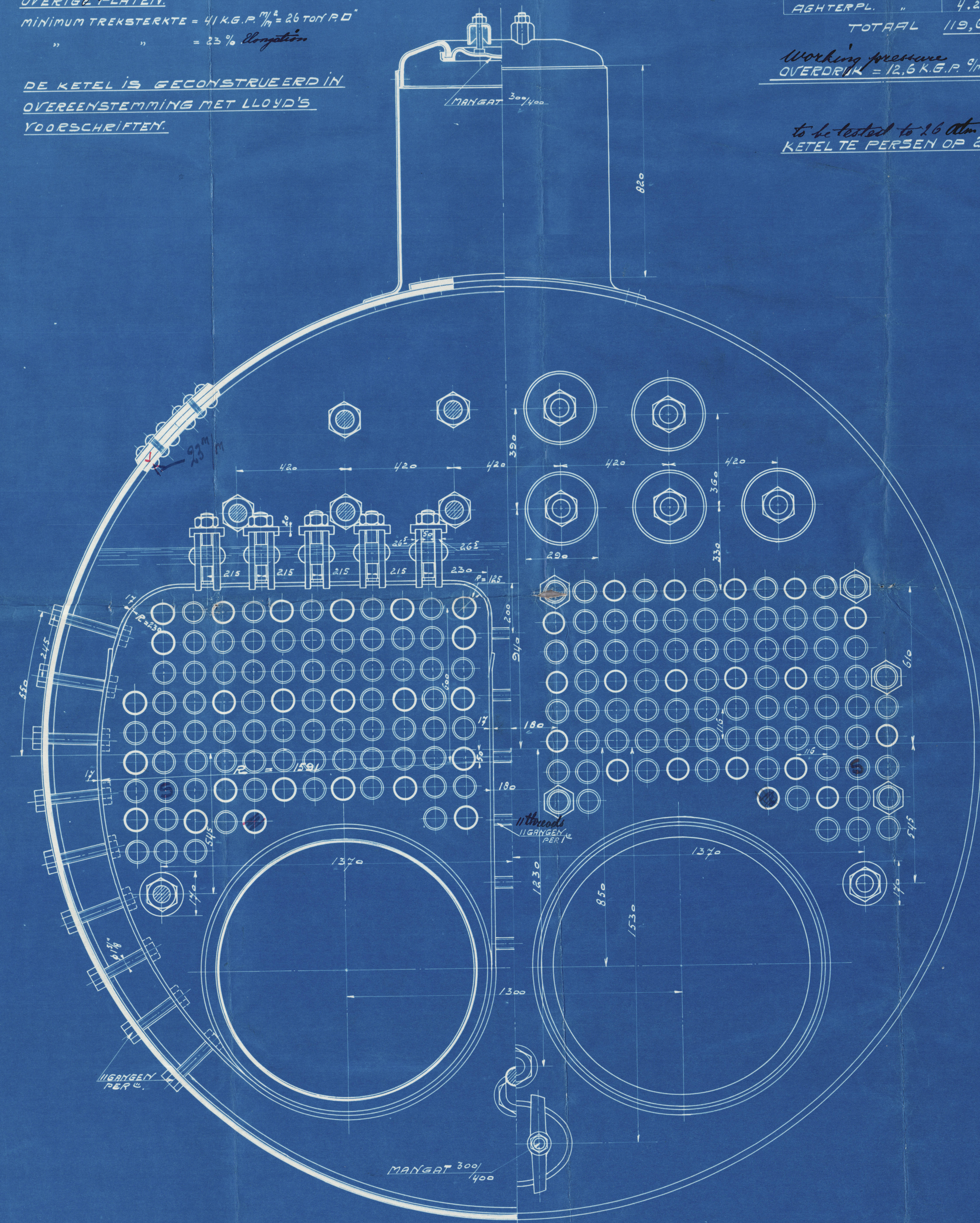
DE KETEL IS GECONSTRUEERD IN
 OVEREENSTEMMING MET LLOYD'S
 VOORSCHRIJFEN.

BEPALING V.O.

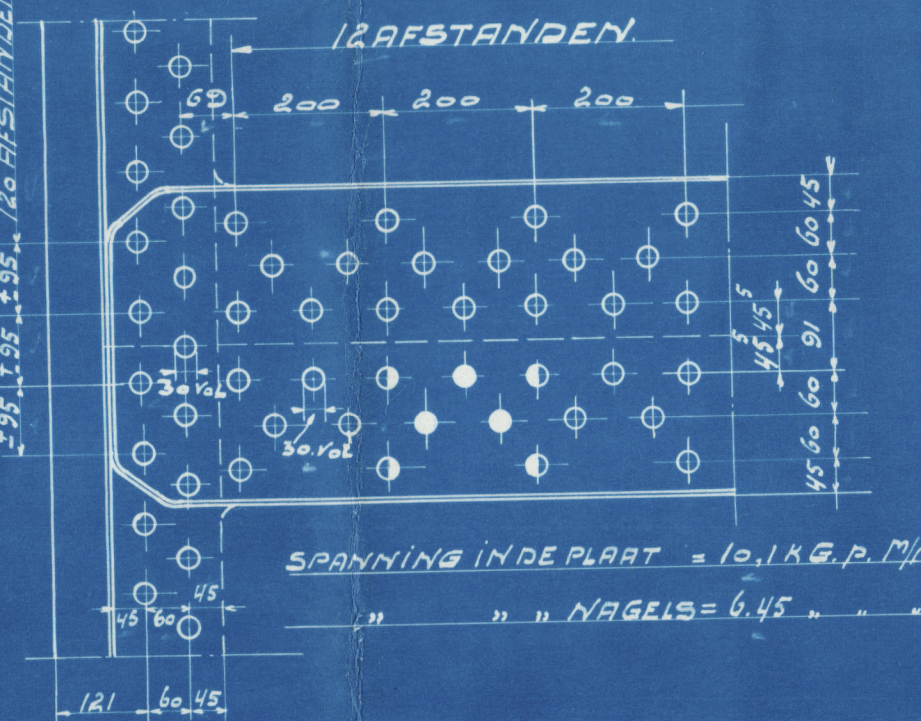
	V.O. UITWENDIG	V.O. INWENDIG
VLAMPJEPEN	71.50 M ²	66.00 M ²
STEUNPIEPEN	25.70 M ²	22.00 M ²
YUURGANSEN	8.00 M ²	
PIJPEMPL. VLAMPJESTEN	1.80 M ²	22.40 M ²
OMTREKPL.	8.40 M ²	
ASHTERPL.	4.20 M ²	
TOTAAL	119.60 M ²	110.40 M ²

Working pressure
 OVERDRUK = 12.5 K.G.P. $\frac{1}{2}$ " = 180 LB. P.D.

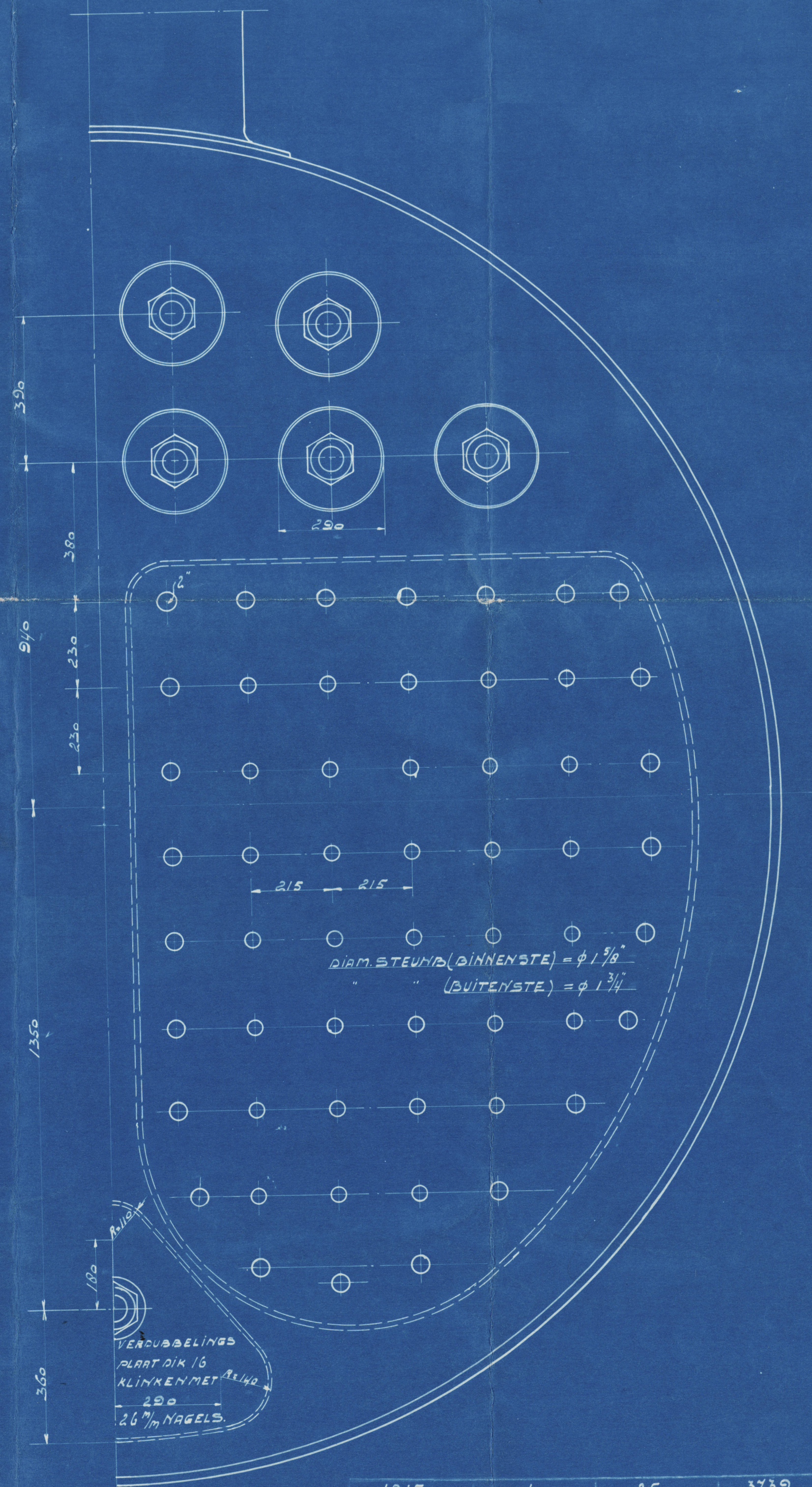
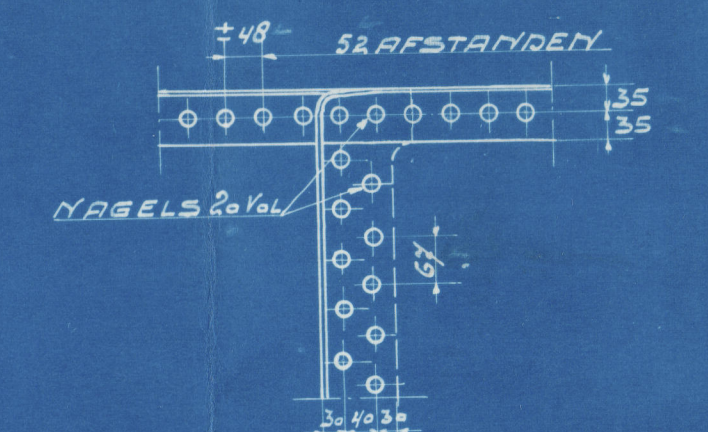
to be tested to 16 atm.
 KETEL TE PROEVEN OP 16 ATM.



DETAIL KLANKVERBAND ROMP



DETAIL KLANKVERBAND STOOMDOOM



1915	1	25	3739
JAAR	AMTAL	KOKER	ORDER N ^o
N.V. FABRIEK VAN STOOM- EN ANDERE WERKTUIGEN			
H ^o JONKER & ZON AMSTERDAM			
8022			
BOOTKETEL, V.O. 120 M ² , OVERDRUK 12.5 K.G. PER CM ²			
GET. W.A.T.	GEAL. C.D.	GECONTR. C.D.	
DATUM 17 JAN.	SCHAAKT 1:10		

Handwritten notes and signatures, including 'J.P.P.' and '25-1-16'.

N. V. Fabriek van Stoom- & Andere Werktuigen

G. Jonker & Zoon.

Boiler, Mont's Island.



JAN 2 1917



New fitted
12/10

RETAIN



© 2019

Lloyd's Register
W1226-0018