

14/3/10

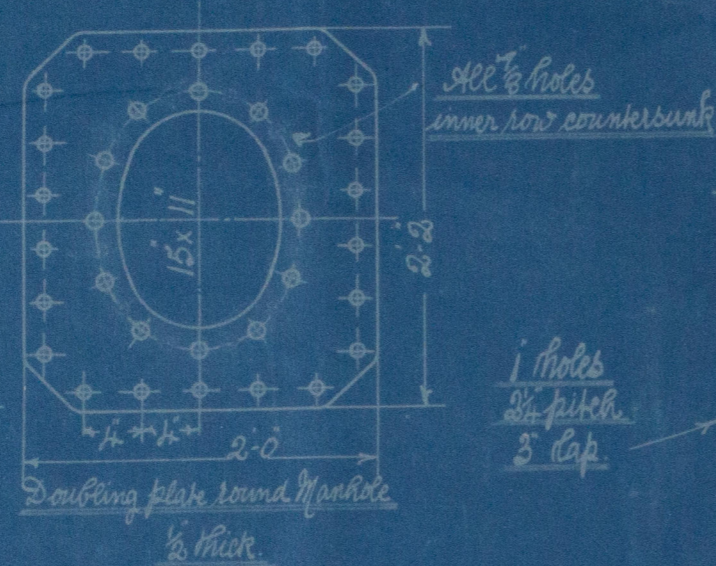
# STEEL IDKY BOILER

Working Pressure = 100 lbs. Lloyd's Brand & Trade.  
Scale 1 Inch = 1 Foot.

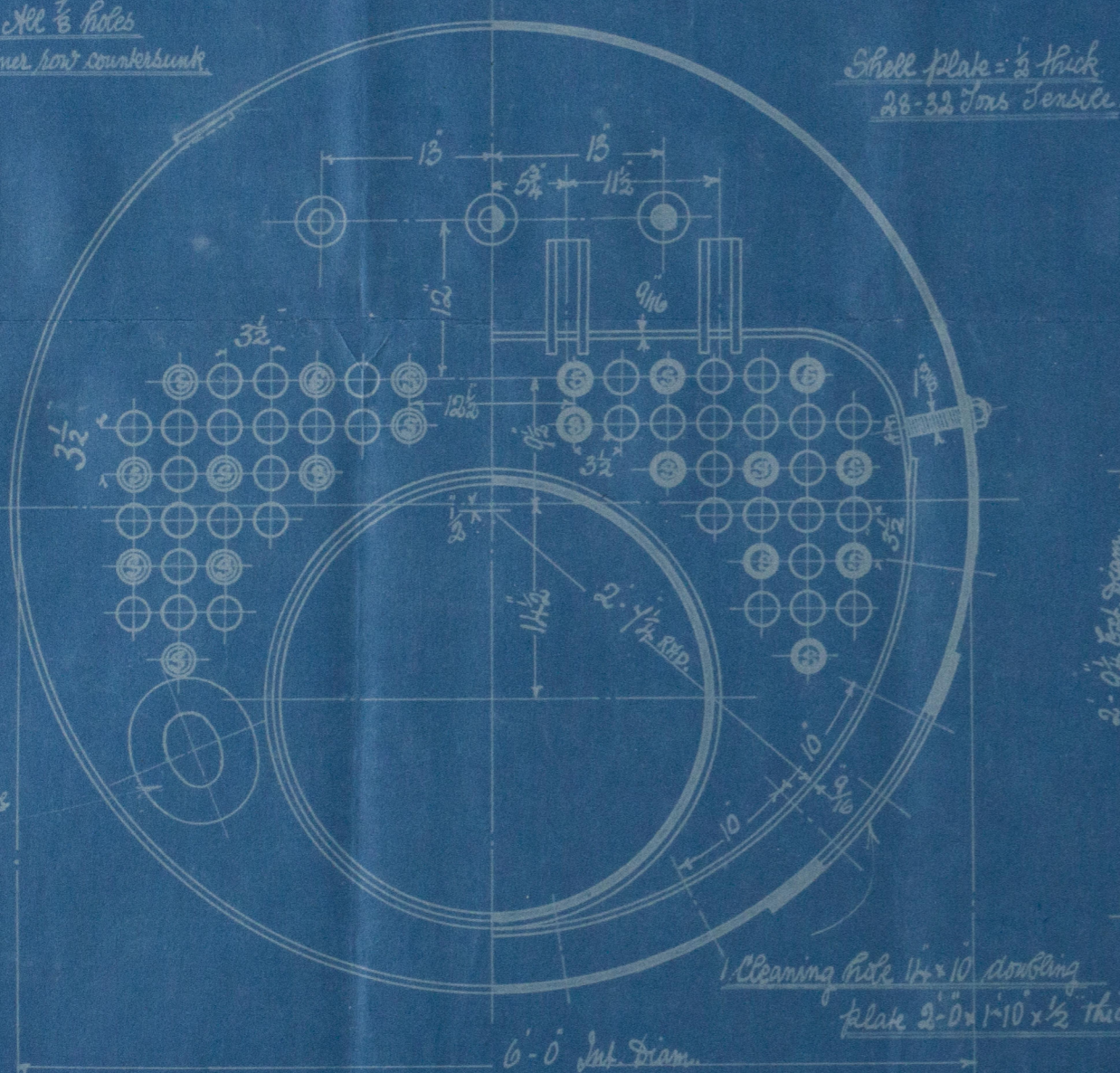
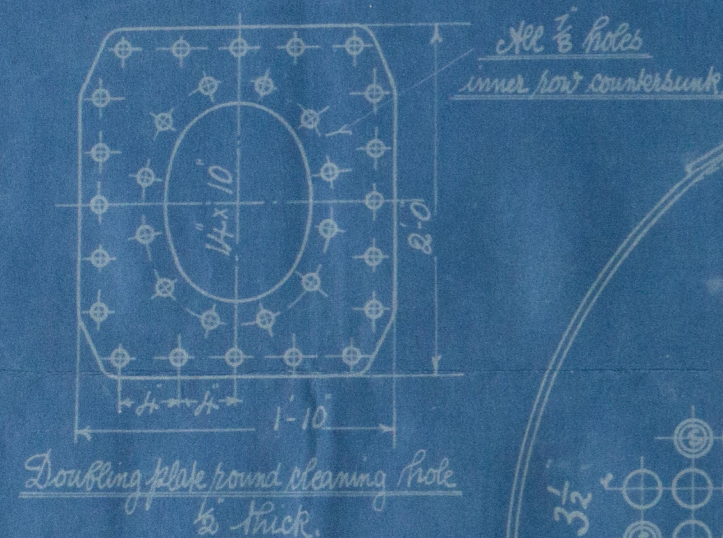
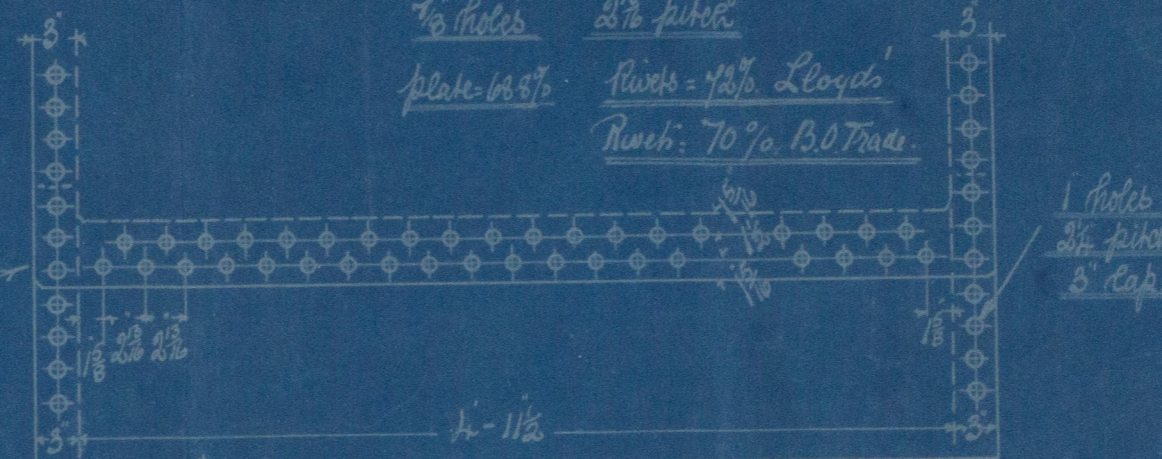
## DIMENSIONS

LENGTH OF FIRE BARS	3'-4"
AREA OF FIRE GRATE	9 sq
DIAM OF TUBES OUTSIDE	2 3/8"
LENGTH OF TUBES over plates	4'-0"
Nº OF TUBES	58
AREA THROUGH TUBES	144 sq
SURFACE OF TUBES	144 sq
TOTAL HEATING SURFACE	200 sq
WORKING PRESSURE Lloyd's BOT	100 lbs.

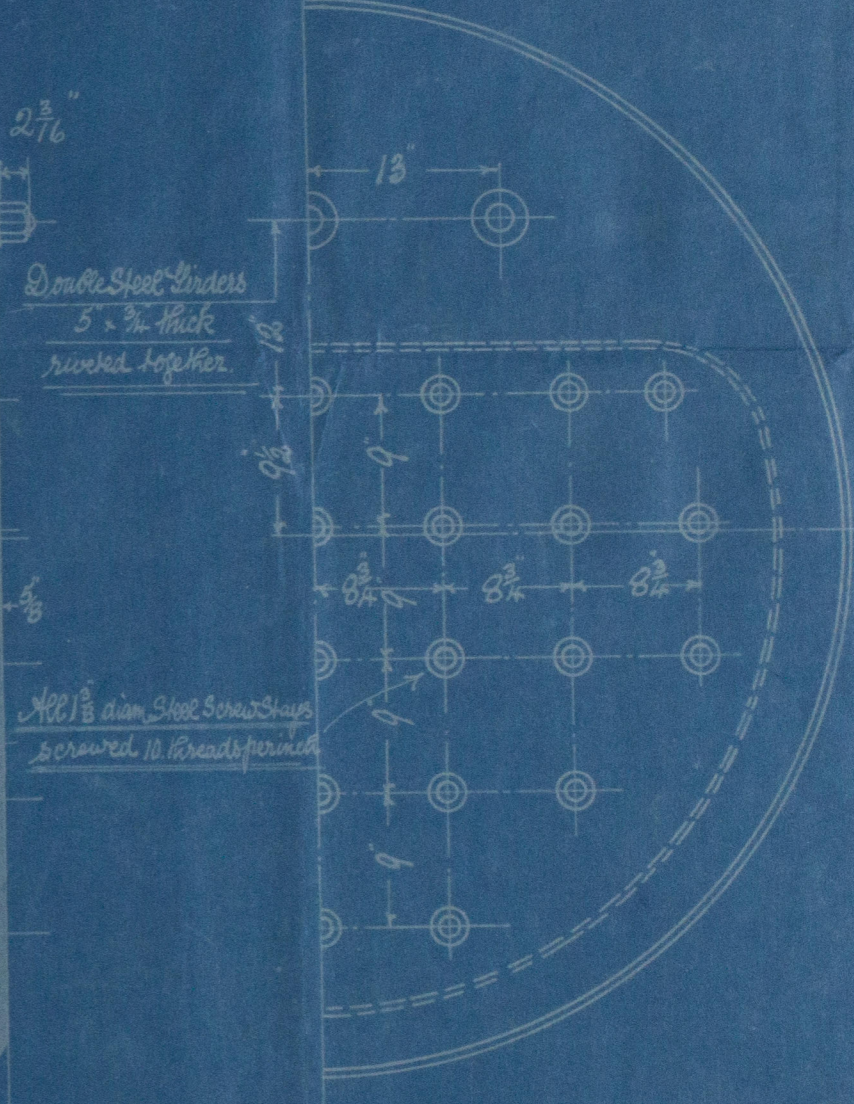
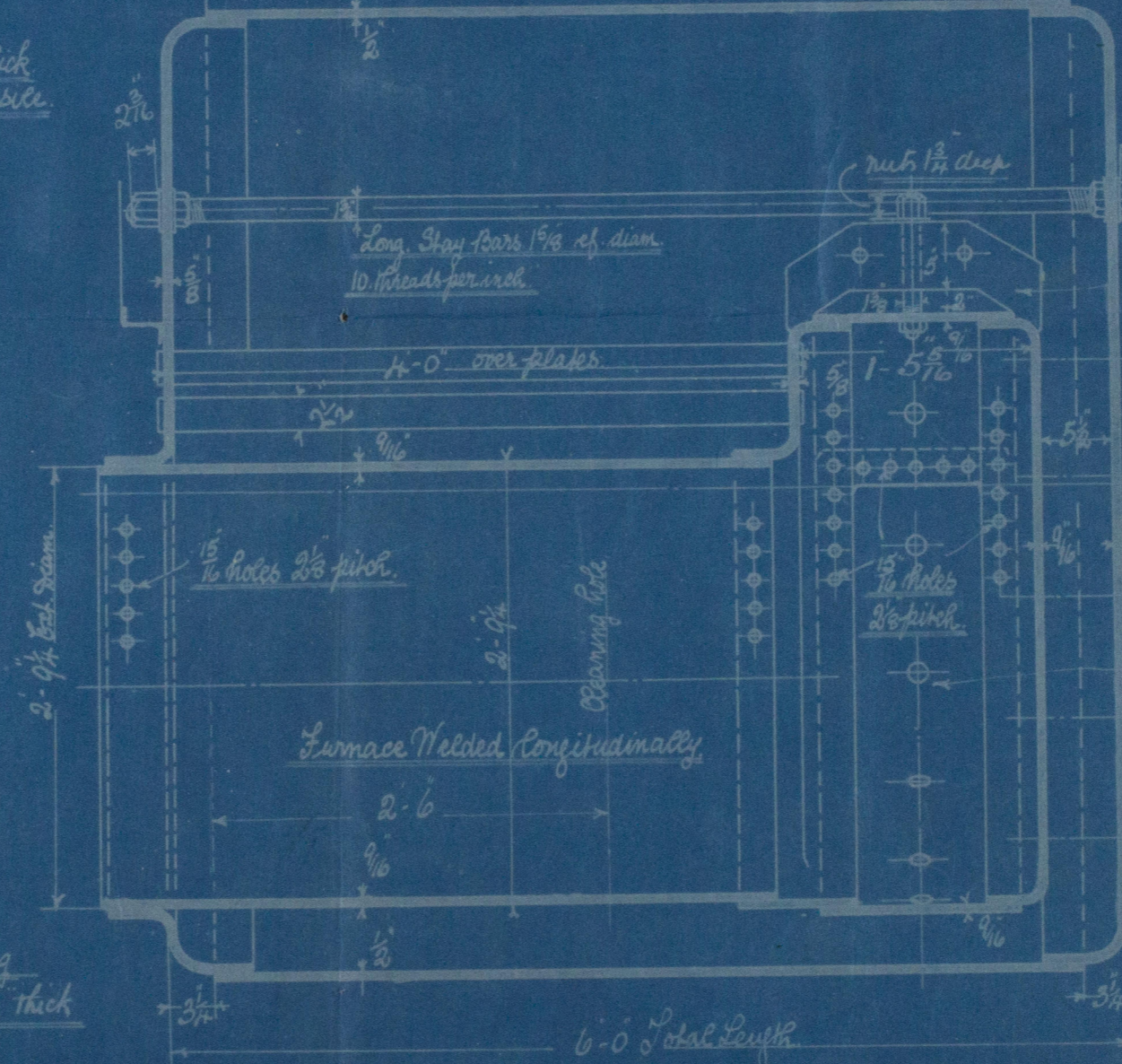
Note! All plates stays & rivets to be of Siemens Martin Steel.  
All rivet holes to be drilled in place after the plates are bent.  
All flanged plates to be annealed after flanging.  
The screw stays are 1 1/2" of diam. screwed into both plates and nutted at each end (10 threads per inch).  
Iron ordinary tubes 2 3/8" ext diam. x 1/2" g. x 5/8" thick welded 1/2" at front end. Iron stay tubes 3 1/2" ext diam. x 1/2" thick in body x 1/2" thick effective screwed at ends to 2 1/2" x 1 1/2" diam. 10 threads per inch.  
A manhole in shell 15 x 11 with shorter axis longitudinally and a doubling plate 2'2" x 2'-0" fitted round it.



Plan of Shell Riveting  
1/2" holes 2 1/2" pitch  
plate - 68%  
Rivets - 1/2" Lloyd's  
Rivet - 70% B.O. Trade.



1 Sight hole 6" x 1/2" at front end where shown fitted with doubling plate 2 1/2" wide x 1/2" thick.



Nº A.145.

Lloyd's  
9968.B.  
9-3-1911.

9902.B.  
8-2-1911.

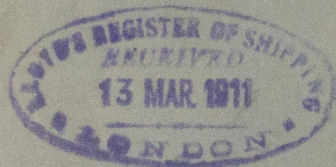
9902.B.  
14/3/11

Amended plan  
Donkey Boiler

Messrs  
Earles & Co  
No A 145  
S. S. No 91

No 1824  
Lloyds Test  
200 lbs  
J.B.  
27.7.11

Hull Rpt No. 24301



S. "Skell"  
Rat 7299.

W1221-0156



© 2020

Lloyd's Register  
Foundation