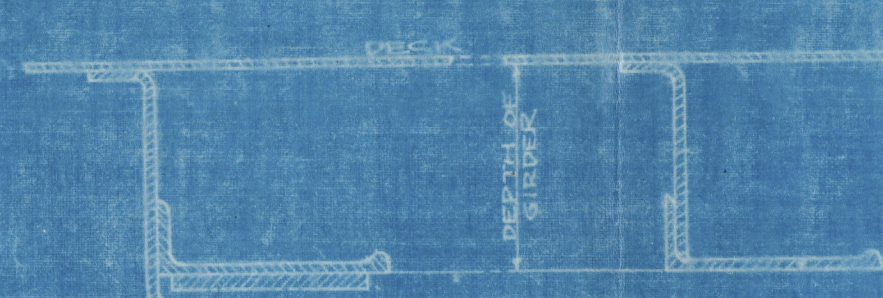


WIDELY SPACED PILLAR GIRDER										
CENTRE OR SIDE	FRAME NO.	S	B	H	2.5-H 100	DEPTH OF GIRDER BELOW HATCH DECK	THICKNESS OF GIRDER	GIRDER	FACE BAR	PLATE
BRIDGE DECK										
SIDES	66-73	17.45	15.53	4.00	19.5	300 (11.8)	10.5 (4.1)	8.5x3.5x.44	SINGLE	NONE
UPPER DECK										
CENTRE	8-16	19.55	17.22	6.50	26.7	350 (13.8)	10.5 (4.1)	8.5x3.5x.44	SINGLE	NONE
SIDES	16-28	29.00	15.52	5.00	26.3	350 (13.8)	10.5 (4.1)	8.5x3.5x.44	SINGLE	NONE
CENTRE	28-34	14.96	5.10.21	5.00	12.5	350 (13.8)	10.5 (4.1)	8.5x3.5x.44	SINGLE	NONE
SIDES	34-46	29.00	15.52	5.00	26.3	350 (13.8)	10.5 (4.1)	8.5x3.5x.44	SINGLE	NONE
CENTRE	46-52	16.35	5.10.21	5.00	12.5	350 (13.8)	10.5 (4.1)	8.5x3.5x.44	SINGLE	NONE
SIDES	52-60	22.7	15.90	2.25	6.4	350 (13.8)	10.5 (4.1)	8.5x3.5x.44	SINGLE	NONE
CENTRE	60-72	19.55	5.10.21	5.00	12.5	350 (13.8)	10.5 (4.1)	8.5x3.5x.44	SINGLE	NONE
SIDES	72-81	14.96	16.45	2.00	1.30	350 (13.8)	10.5 (4.1)	8.5x3.5x.44	SINGLE	NONE
CENTRE	81-97	14.96	5.11.11	5.00	12.5	350 (13.8)	10.5 (4.1)	8.5x3.5x.44	SINGLE	NONE
SIDES	97-109	29.00	15.52	5.00	26.3	350 (13.8)	10.5 (4.1)	8.5x3.5x.44	SINGLE	NONE
CENTRE	109-120	29.00	15.52	5.00	26.3	350 (13.8)	10.5 (4.1)	8.5x3.5x.44	SINGLE	NONE
2ND DECK										
CENTRE	69-77	19.55	5.10.21	5.00	12.5	350 (13.8)	10.5 (4.1)	8.5x3.5x.44	SINGLE	NONE
SIDES	77-81	17.45	5.10.21	5.00	12.5	350 (13.8)	10.5 (4.1)	8.5x3.5x.44	SINGLE	NONE
CENTRE	81-97	14.96	5.11.11	5.00	12.5	350 (13.8)	10.5 (4.1)	8.5x3.5x.44	SINGLE	NONE
SIDES	97-109	29.00	15.52	5.00	26.3	350 (13.8)	10.5 (4.1)	8.5x3.5x.44	SINGLE	NONE
CENTRE	109-120	29.00	15.52	5.00	26.3	350 (13.8)	10.5 (4.1)	8.5x3.5x.44	SINGLE	NONE

WIDELY SPACED PILLAR							
CENTRE OR SIDE	FRAME NO.	S	B	H	2.5-H 100	LENGTH OF PILLAR	SIZE OF TUBULAR PILLAR
2ND DECK - UPPER DECK							
CENTRE	16	24.93	19.38	8.64	32.1	4.57 (18.1)	22.5x10.5 (8.9x4.1)
-	28	29.40	24.10	8.00	29.2	4.57 (18.1)	22.5x10.5 (8.9x4.1)
-	34	-	-	-	2.05	4.25 (16.7)	22.5x10.5 (8.9x4.1)
-	46	-	22.86	5.92	29.7	4.25 (16.7)	22.5x10.5 (8.9x4.1)
-	77	27.40	22.85	5.95	37.5	2.26 (8.9)	22.5x10.5 (8.9x4.1)
-	91	24.75	22.80	5.00	29.2	-	210 (8.3)
-	97	27.36	22.83	-	25.1	-	210 (8.3)
-	109	29.36	24.05	8.00	29.2	-	210 (8.3)
HOLD							
CENTRE	77	19.70	23.05	14.02	60.4	3.01 (11.8)	35.0x15.0 (13.8x5.9)
SIDES	84	17.45	16.44	13.50	38.7	3.01 (11.8)	35.0x15.0 (13.8x5.9)
CENTRE	91	16.20	22.90	13.50	28.8	4.25 (16.7)	22.5x10.5 (8.9x4.1)
-	97	22.90	21.70	13.50	25.1	4.25 (16.7)	22.5x10.5 (8.9x4.1)
-	109	29.36	16.35	16.50	55.5	4.25 (16.7)	22.5x10.5 (8.9x4.1)
N.B. - S, B, H MEASURED IN FT.							

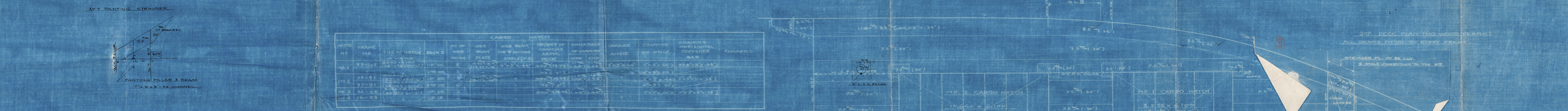
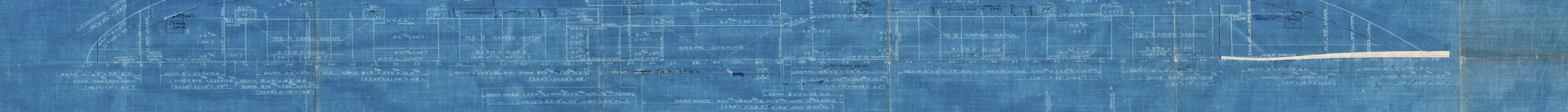
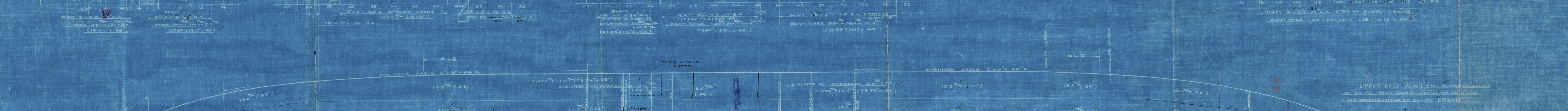
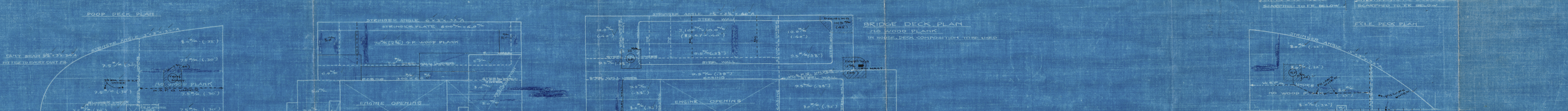
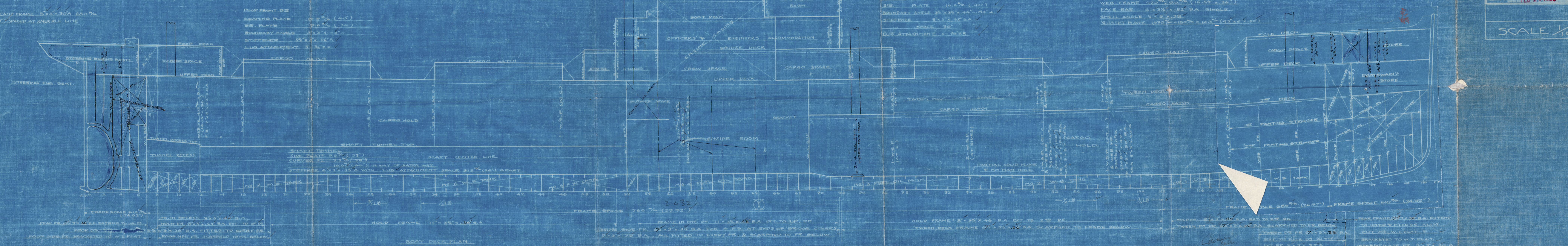
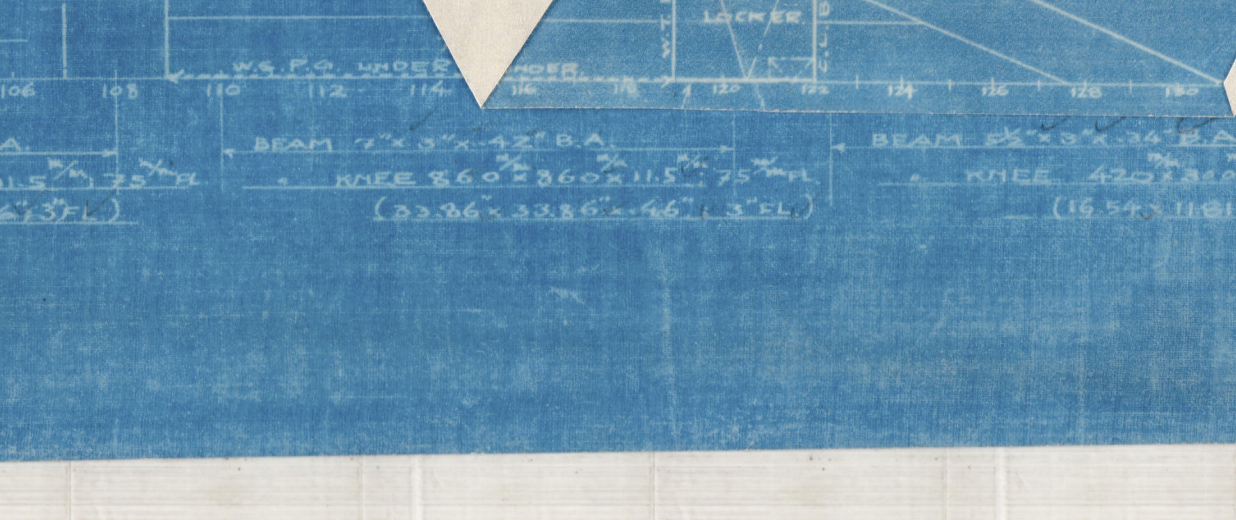
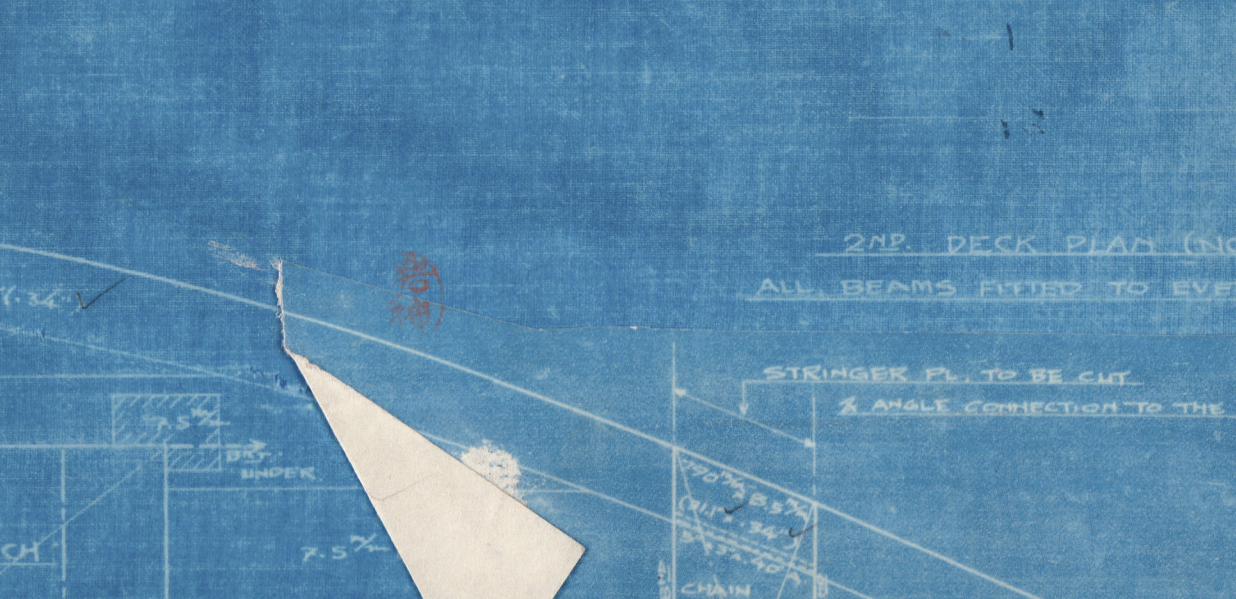
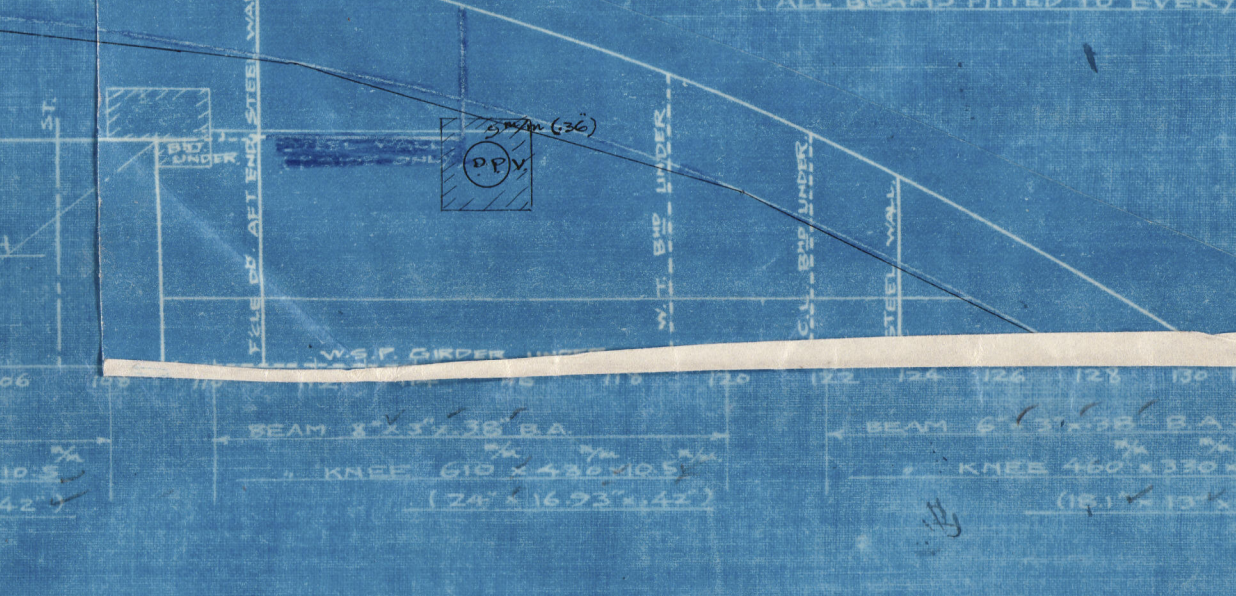
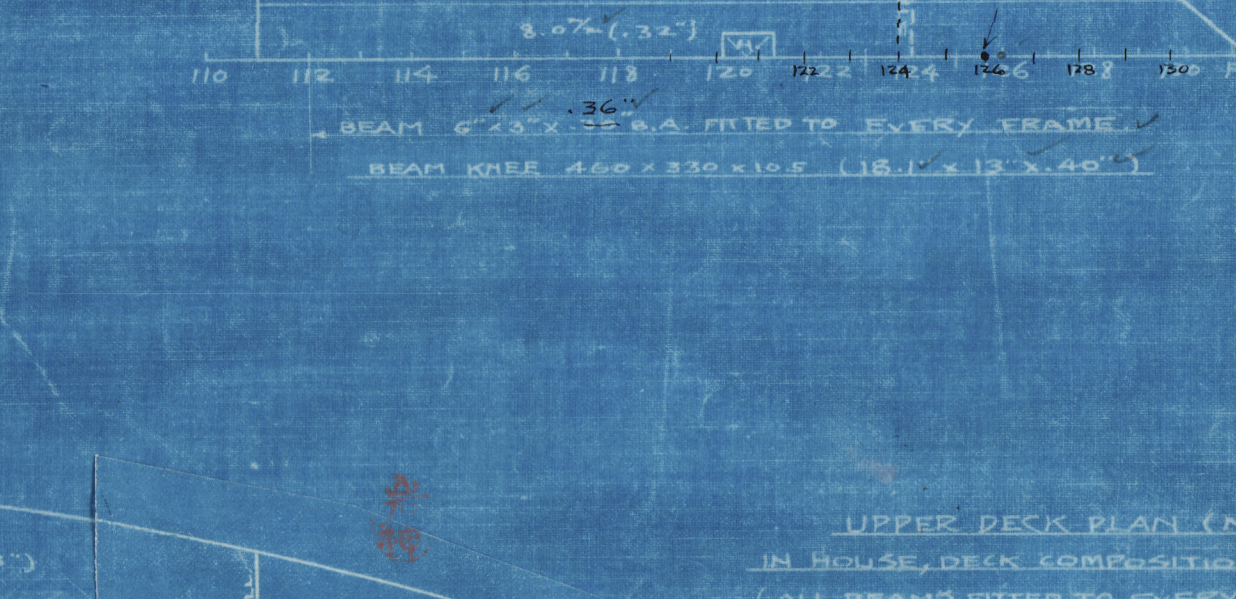
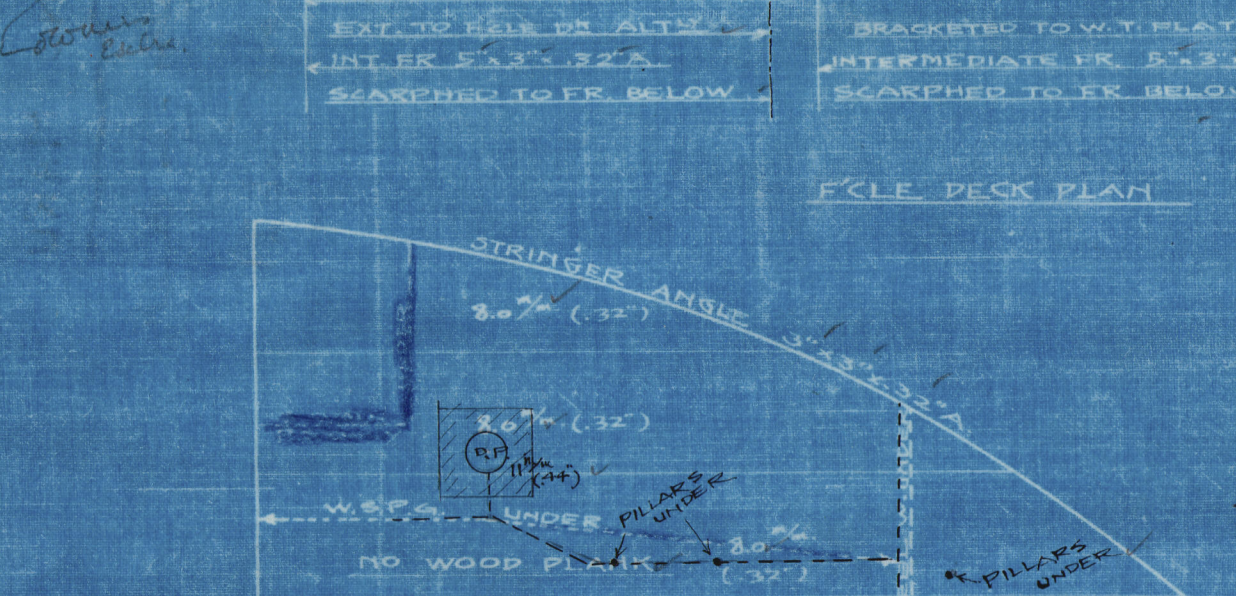
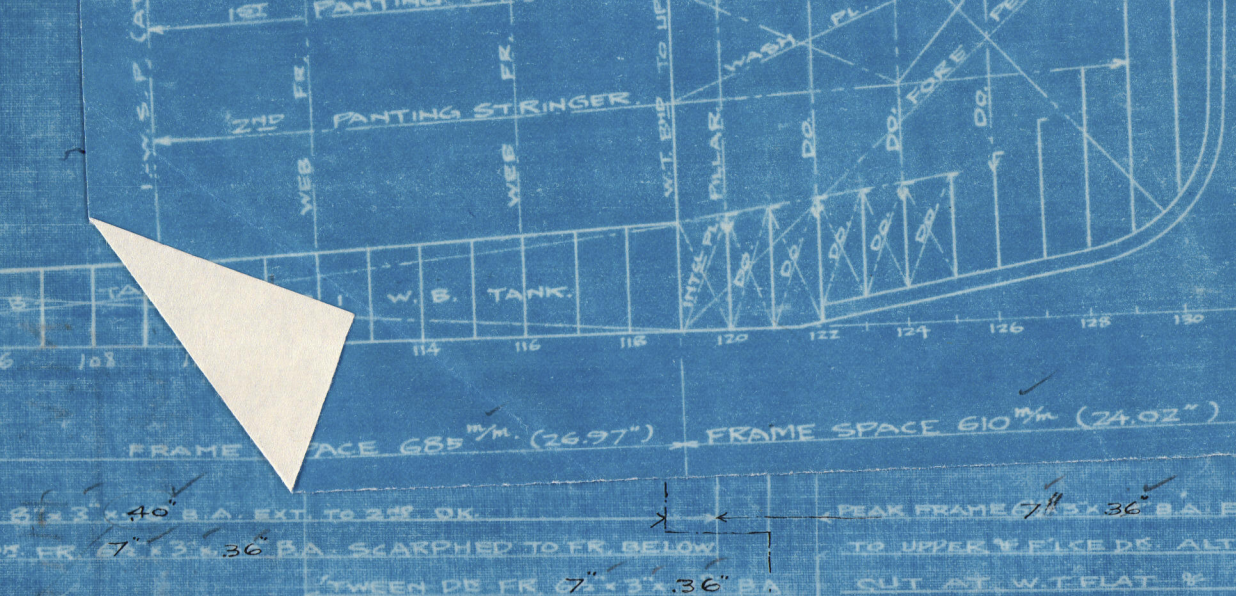
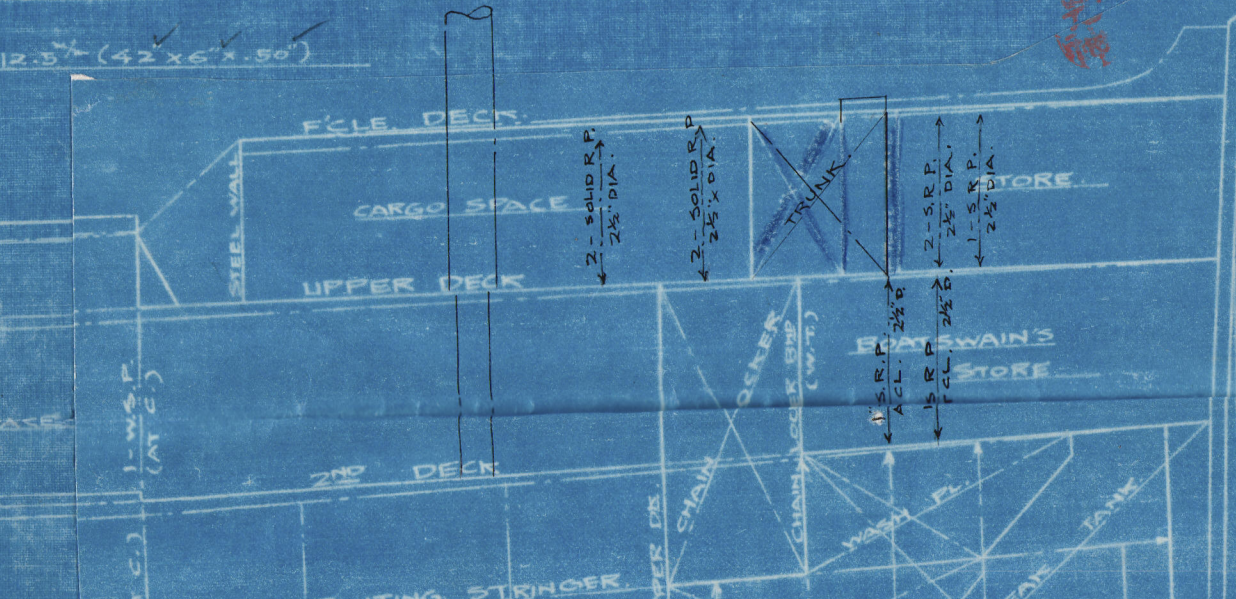
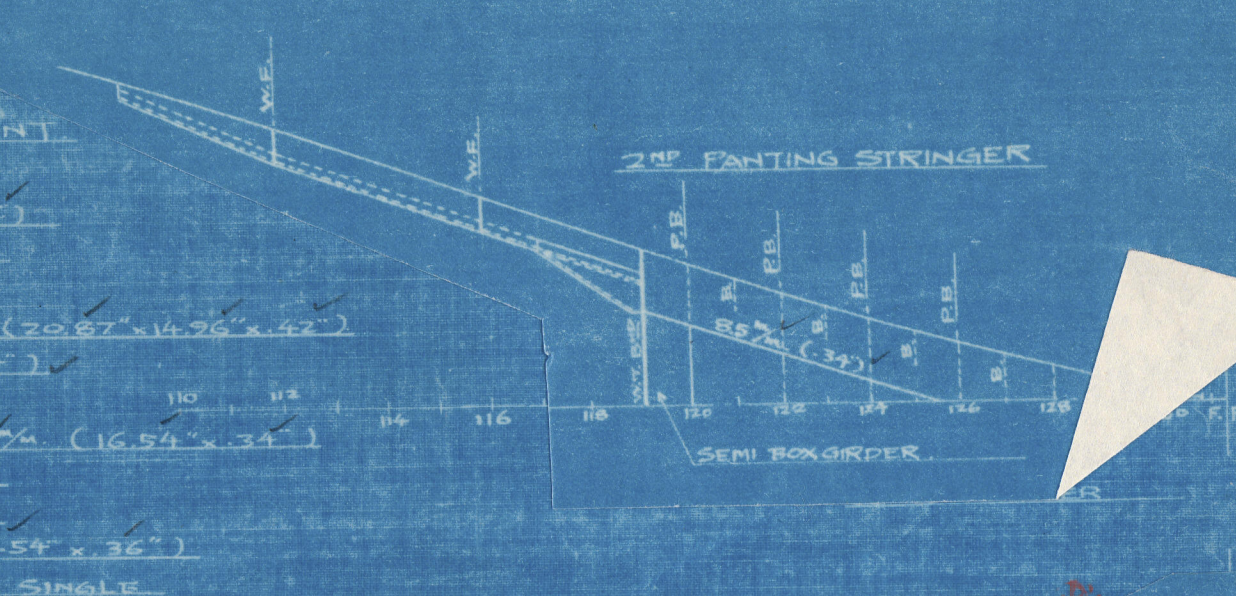
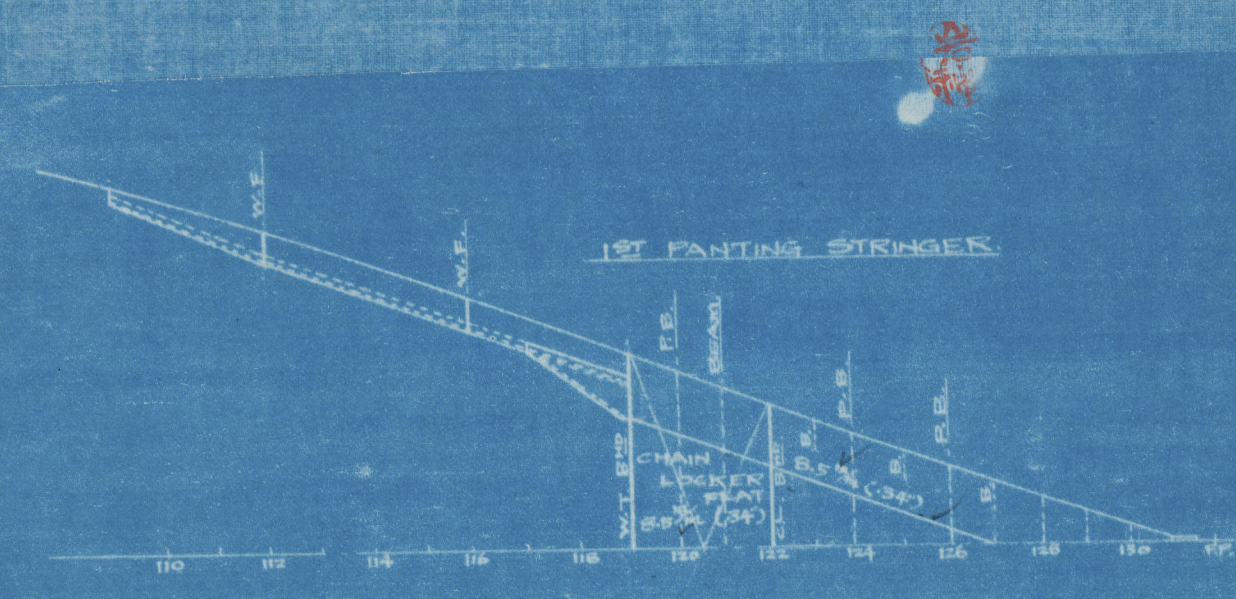
HATCH END BEAM										
FRAME NO.	L	B	D	H	2.5-H 100 100	DEPTH	THICKNESS	FACE BAR		
UPPER DECK										
16	30.0	14.93	19.38	5.60	36.4	13.2 (5.2)	10.5 (4.1)	8.5x3.5x.44	N.B.S. SINGLE	FROM HATCH SIDE TO SHIP SIDE
28	46.2	15.30	23.15	8.00	53.9	"	"	10.5x3.5x.44	"	"
34	"	16.40	22.65	"	62.6	"	"	8.5x3.5x.44	"	DOUBLE
46	"	16.43	22.65	"	62.5	"	"	10.5x3.5x.44	"	SINGLE
77	14.8	16.50	23.08	5.78	58.5	"	"	10.5x3.5x.44	"	DOUBLE
91	43.8	16.45	22.65	5.00	69.8	"	"	8.5x3.5x.44	"	DOUBLE
97	43.1	15.74	22.08	"	56.2	"	"	10.5x3.5x.44	"	SINGLE
109	29.2	14.43	19.38	5.60	33.4	"	"	8.5x3.5x.44	"	SINGLE
IN WAY OF HATCH END CORNERS 132" (5.2) FLANGE ONLY										
2ND DECK										
27	37.45	16.50	23.08	3.50	90.8	13.2 (5.2)	10.5 (4.1)	12.0x3.5x.44	N.B.S. SINGLE	SHIP'S SIDE TO SHIP'S SIDE
51	35.43	16.15	22.30	"	74.6	"	"	11.5x3.5x.44	"	"
97	43.10	15.42	21.65	"	91.7	"	"	12.0x3.5x.44	"	"
109	28.15	13.72	17.20	"	42.5	"	"	7.2x3.5x.44	"	"
N.B. = L & B DIM MEASURED IN FT.										
MARK "N.B.S." IS NEW BRITISH BULB ANGLE SECTION										

DETAIL OF GIRDER & HATCH END BEAM



BRIDGE FRONT VIEW
COAMING PLATE 11.8x.44 (4.7)
SHIP PLATE 11.8x.44 (4.7)
BOUNDARY ANGLE 8.5x3.5x.44 (3.3)
STIFFENER 8.5x3.5x.44 (3.3)
LUS ATTACHMENT 3.5x.44 (1.4)

IN CASE BEAM ARRANGEMENT
STIFFENER PLATE 8.5x3.5x.44 (3.3)
SHIP PLATE 11.8x.44 (4.7)
BOUNDARY ANGLE 8.5x3.5x.44 (3.3)
STIFFENER 8.5x3.5x.44 (3.3)
LUS ATTACHMENT 3.5x.44 (1.4)



HATCH NO.	FRAME NO.	SIZE OF HATCH	DECK	WEB	WEB BEAM	WEB PLATE	HEIGHT OF WEB	THICKNESS OF WEB	CARRIER	COAMING	COAMING PLATE	STIFFENER	REMARKS
1	97-109	16.45x22.65	UP DECK	8.5	22.65	8.5x3.5x.44	13.2	10.5	8.5x3.5x.44	11.8x.44	11.8x.44	8.5x3.5x.44	
2	77-91	14.8x16.5	UP DECK	8.5	16.5	8.5x3.5x.44	13.2	10.5	8.5x3.5x.44	11.8x.44	11.8x.44	8.5x3.5x.44	
3	77-91	14.8x16.5	UP DECK	8.5	16.5	8.5x3.5x.44	13.2	10.5	8.5x3.5x.44	11.8x.44	11.8x.44	8.5x3.5x.44	
4	16-28	14.96x15.52	UP DECK	8.5	15.52	8.5x3.5x.44	13.2	10.5	8.5x3.5x.44	11.8x.44	11.8x.44	8.5x3.5x.44	

W1220 - 0068

M.V. HINO MARU

Profile & Deck - as built.

Kols Report 6621

RECEIVED



© 2020

Lloyd's Register
Foundation