

# S.S. No 597

## PROFILE

Scale: 1/8" = 1 Foot

MOULDED DIMENSIONS: 370'-0" x 52'-9 1/4" x 27'-6"

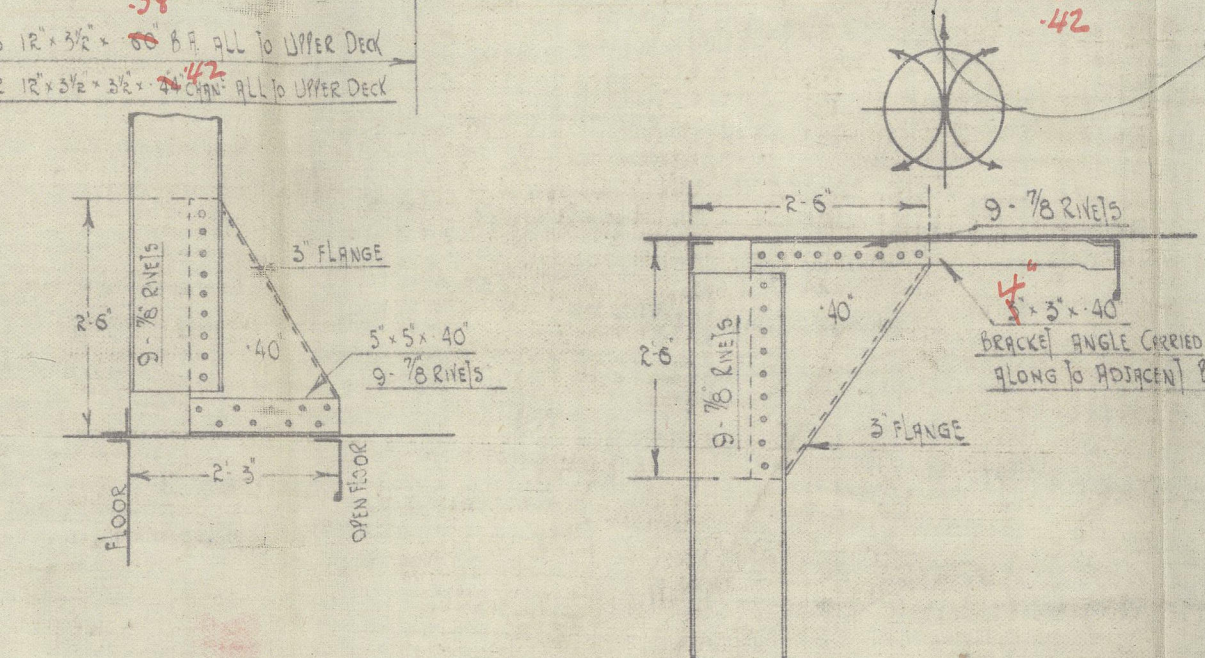
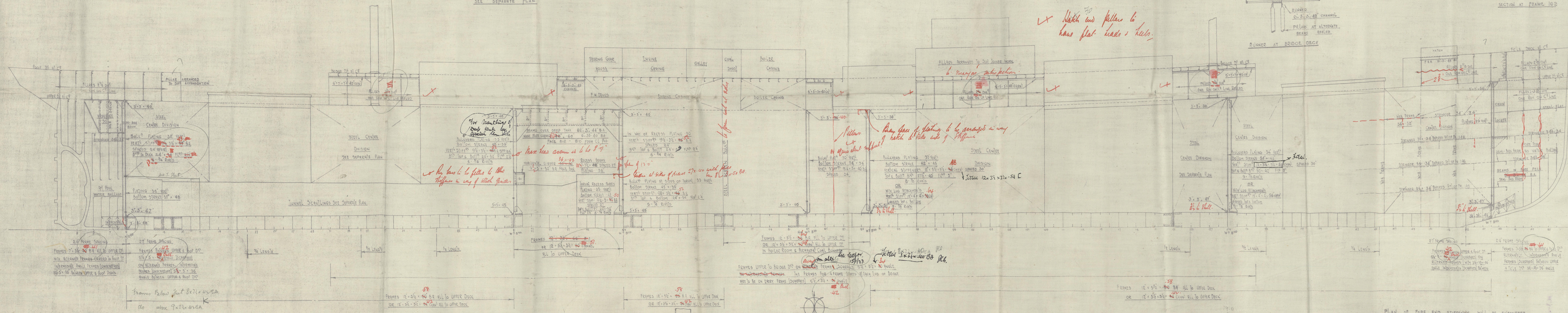
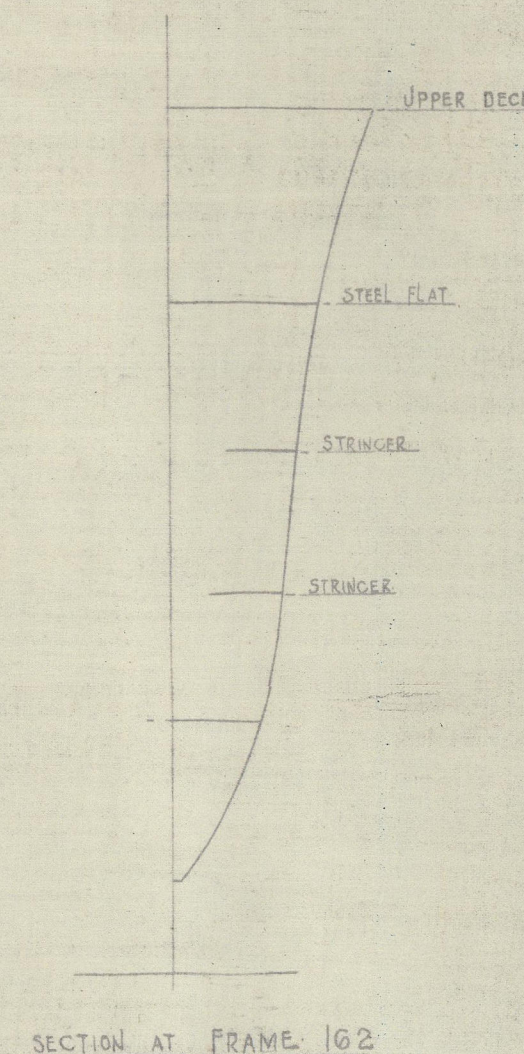
FOR STIFFENING OF HATCH SIDE COAMINGS

SEE SEPARATE PLAN

FOR PILLARS AT HATCH CORNERS

SEE SEPARATE PLAN

4/370  
9~



APPROVED  
LLOYD'S REGISTER OF SHIPPING  
29.12.20

BRITISH CABLE & WIRE LTD  
25 DEC 1922  
WHITE LANE, GLASGOW



Barclay buckle

No 597.

Barclay buckle & Gold

Profile

(595)

"Shaptesbury"

"Hopeland"

Profile.

Glasgow Rpt No. H3152

W122-0102

$$\frac{112 \times 2.2185}{35 \times 108} = 18.7$$



$$\frac{112 \times 2 \times 8}{35 \times 10} = 10.3$$



© 2020

Lloyd's Register  
Foundation