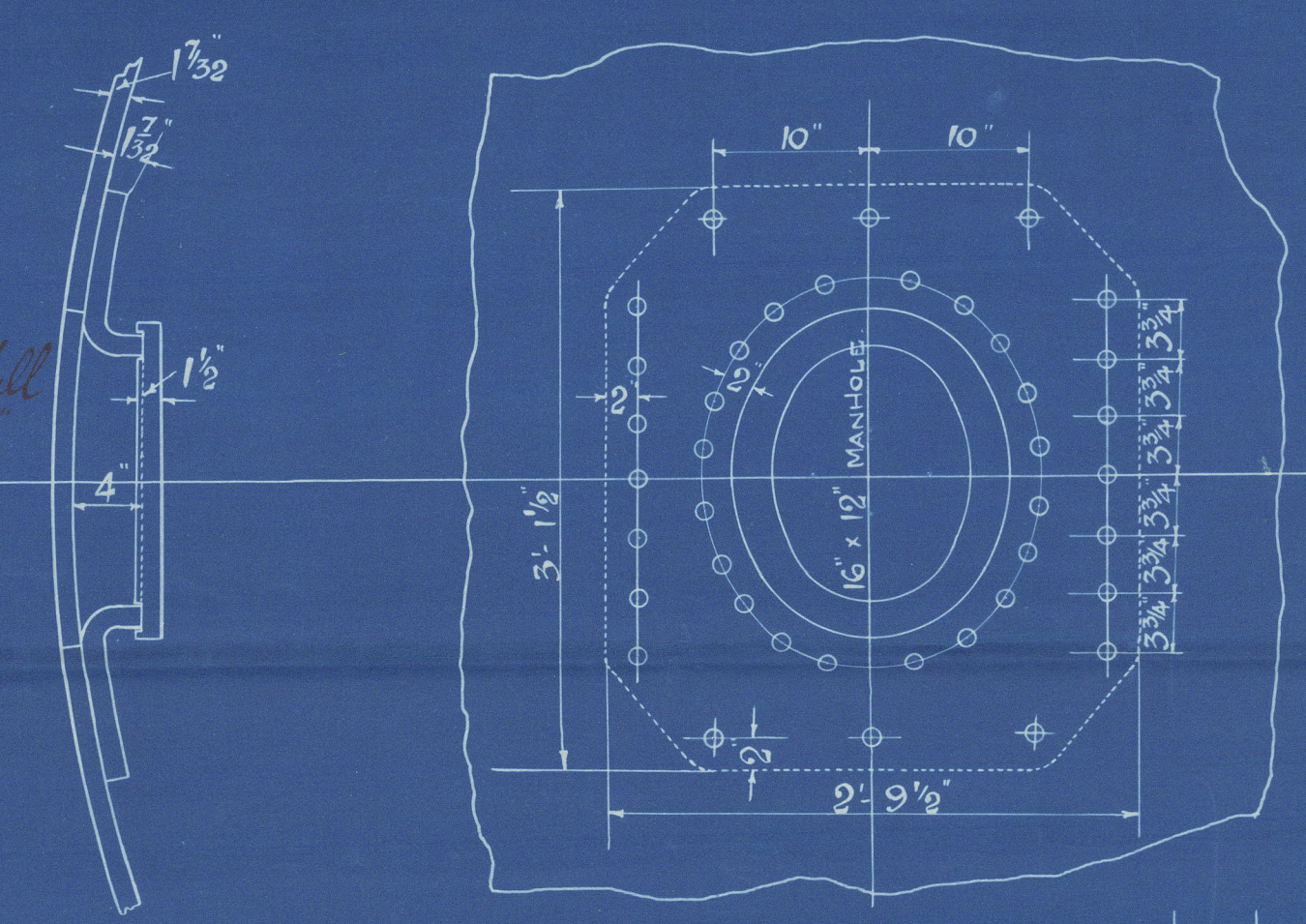
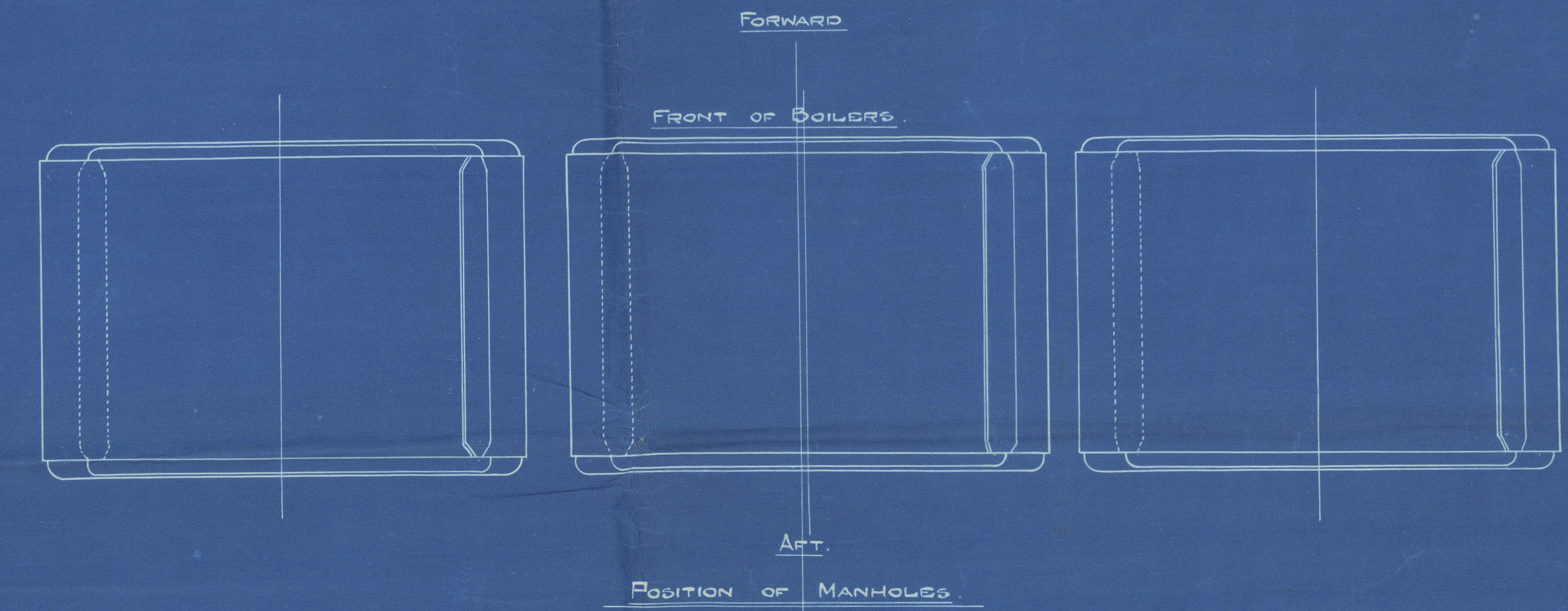


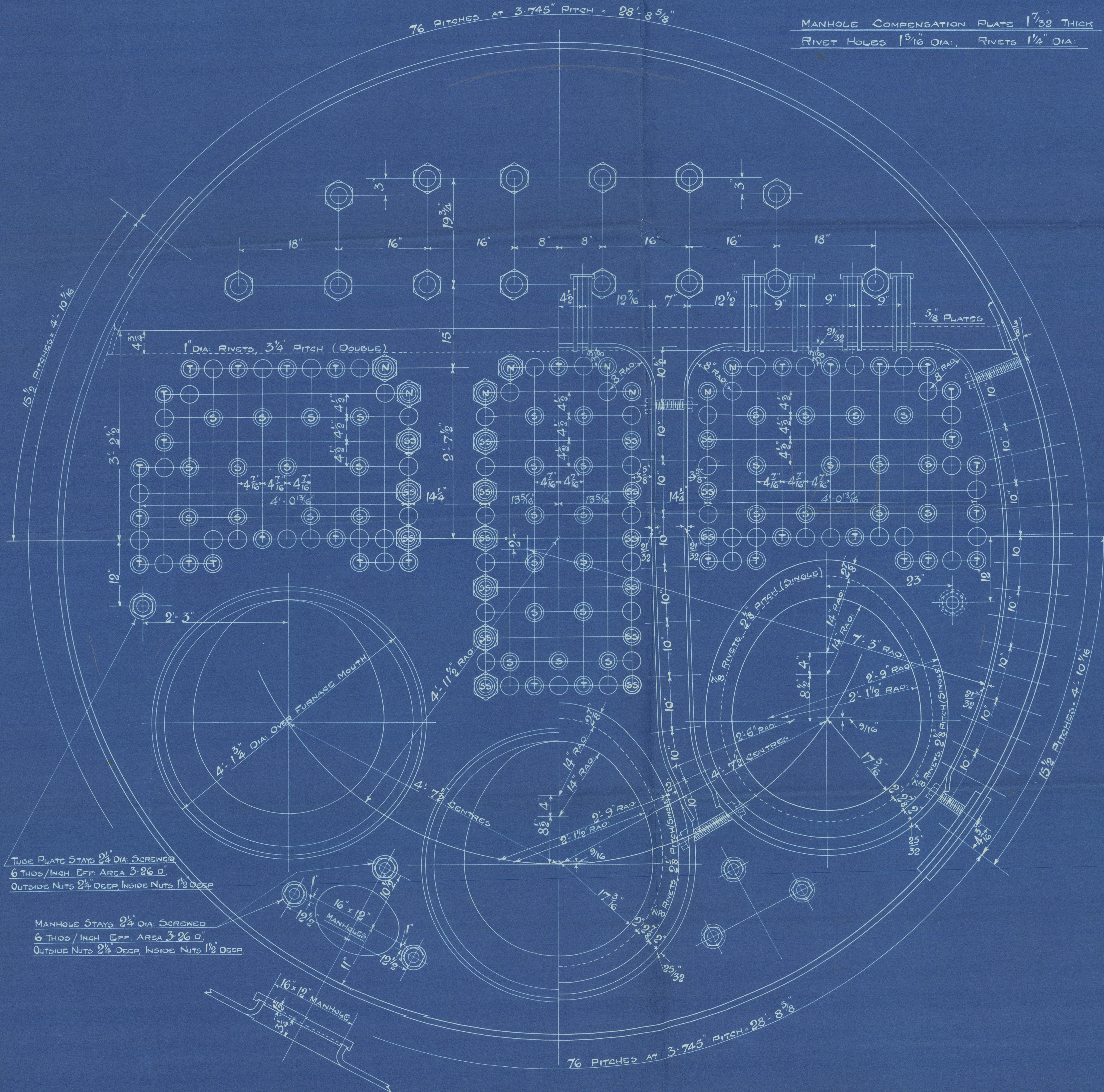
Hole in Shell
20 x 16



MANHOLE COMPENSATION PLATE 1 7/32 THICK
RIVET HOLES 1 5/16 DIA. RIVETS 1 1/4 DIA.

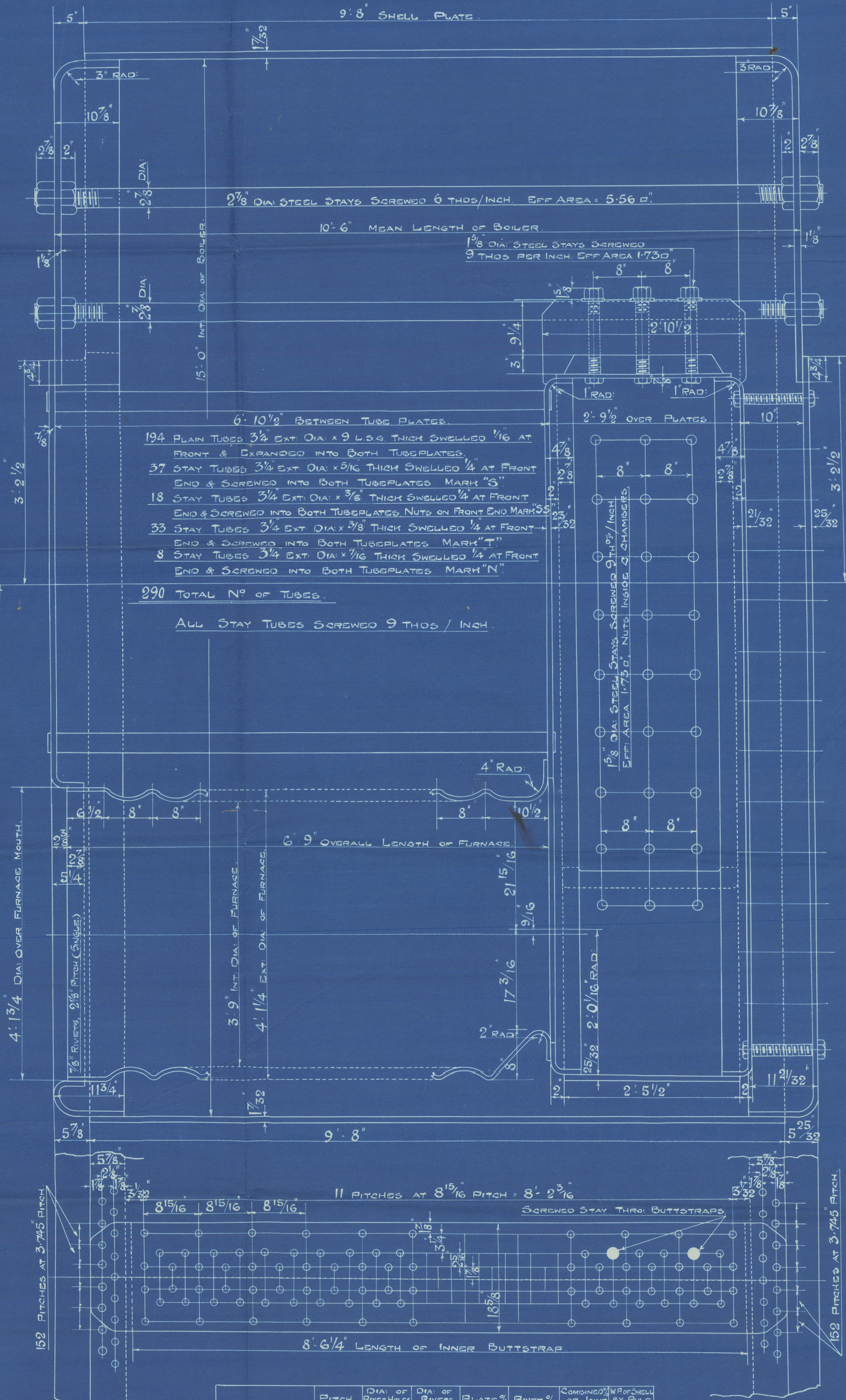


FORWARD
FRONT OF BOILERS
AFT.
POSITION OF MANHOLES

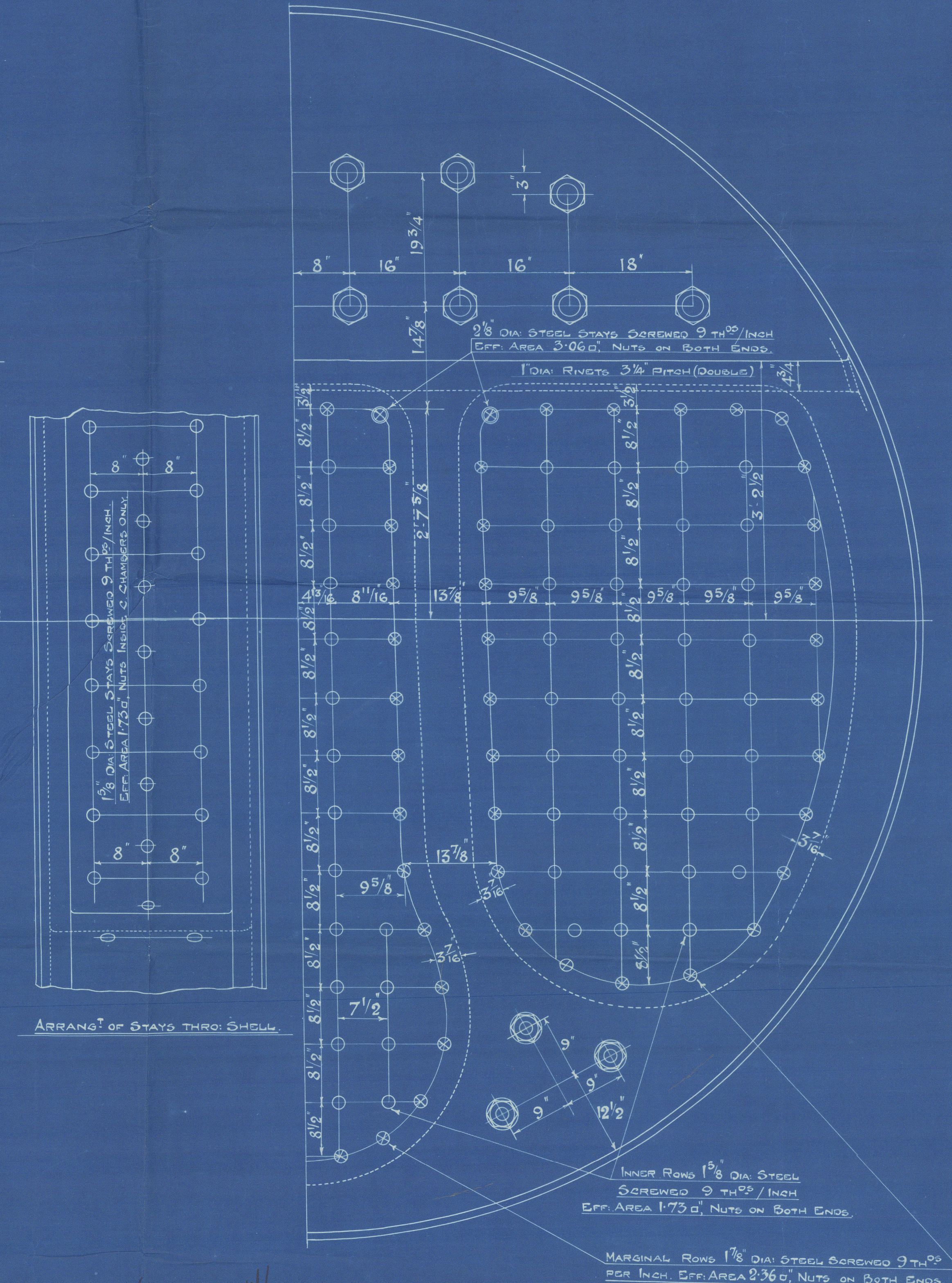


TUBE PLATE STAYS 2 1/8 DIA. SCREWED
6 THROD / INCH EFF. AREA 3.26 SQ. IN.
OUTSIDE NUTS 2 1/8 DIA. INSIDE NUTS 1 1/8 DIA.

MANHOLE STAYS 2 1/8 DIA. SCREWED
6 THROD / INCH EFF. AREA 3.26 SQ. IN.
OUTSIDE NUTS 2 1/8 DIA. INSIDE NUTS 1 1/8 DIA.



6' 10' 9" BETWEEN TUBE PLATES.
194 BLANK TUBES 3 1/2 EXT. DIA. x 9 L.S.G. THICK SHELLED 1/16 AT FRONT & EXPANDED INTO BOTH TUBES PLATES.
37 STAY TUBES 3 1/2 EXT. DIA. x 9/16 THICK SHELLED 1/4 AT FRONT END & SCREWED INTO BOTH TUBES PLATES MARK "S".
18 STAY TUBES 3 1/2 EXT. DIA. x 3/8 THICK SHELLED 1/4 AT FRONT END & SCREWED INTO BOTH TUBES PLATES NUTS ON FRONT END MARK "S".
33 STAY TUBES 3 1/2 EXT. DIA. x 3/8 THICK SHELLED 1/4 AT FRONT END & SCREWED INTO BOTH TUBES PLATES MARK "T".
8 STAY TUBES 3 1/2 EXT. DIA. x 1/16 THICK SHELLED 1/4 AT FRONT END & SCREWED INTO BOTH TUBES PLATES MARK "N".
290 TOTAL NO. OF TUBES.
ALL STAY TUBES SCREWED 9 THROD / INCH.



1 1/8 DIA. STEEL STAYS SCREWED 9 THROD / INCH
EFF. AREA 1.73 SQ. IN. NUTS ON BOTH ENDS.

INNER ROWS 1 1/8 DIA. STEEL SCREWED 9 THROD / INCH
EFF. AREA 1.73 SQ. IN. NUTS ON BOTH ENDS.
MARGINAL ROWS 1 1/8 DIA. STEEL SCREWED 9 THROD / INCH
EFF. AREA 1.73 SQ. IN. NUTS ON BOTH ENDS.

SURFACES	1 BOILER	3 BOILERS
HEATING SURFACES OF TUBES	1710 #	
FURNACES	145 #	
WRAPPED PLATE	150 #	
BACK TUBE PLATE	76 #	
C. PLATE	46 #	
	2127 #	6381 #
GRATE AREA (5' 6" BARS)	62 #	186 #
RATIO H ₂ O / SA	34.3	
AREA THRO. TUBES	12.5 #	37.5 #
SAFETY VALVES	3 DOUBLE	

	TENSILE STRENGTH	MATERIAL
SHELL PLATED	28 - 32 TONS / SQ. IN.	
BUTTRAP	28 - 32	
GIRDER PLATES	28 - 32	
MANHOLE COMPENSATION PLATE	28 - 30	
ALL OTHER PLATES	26 - 30	
FURNACES	26 - 30	
LONGIT. STAYS	28 - 32	
SCREWED STAYS	26 - 30	
RIVET BARS	26 - 30	
		SIEMENS - MARTIN STEEL

TUBES OF LAMINATED WROTH IRON.

	PITCH	DIA. OF RIVET HOLES	DIA. OF RIVETS	PLATE %	RIVET %	SCREWED / WROTH OF JOINT BY RULE
LONGIT. STAYS	8.2375	1 1/4	1 1/8	86.12%	86.72%	89.36% 180 LBS / SQ. IN.
STAYS	3.745	1 1/4	1 1/8	66.62%	44.04%	55.26%

OUTER BUTTRAPS 1 1/16 THICK. INNER BUTTRAPS 1 1/16 THICK.
TEST PRESSURE 320 LBS / SQ. IN.

C. 11 #
B-1-20

S.S. ENGINES No 597.
MAIN BOILERS
15' 0" INT. DIA. x 10' 6" MEAN LENGTH
TO PASS LLOYD'S TESTS & REQUIREMENTS
FOR A WORKING PRESSURE OF 180 LBS / SQ. IN.
SCALE 1" = 1 FOOT.
3-OFF REQUIRED.



Barclay Curle & Co Ltd

N^o 597.

3 S.E. Boilers
W.P. 180 lbs per sq"

Mark m Boilers
N^o 597

N^o 16291

LLOYD'S TEST

320 LBS.

W.P. 180 LBS.

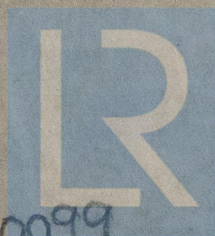
H.C.F. 25.6.23

"Shafterbury"

ex
Hopeland

GLASGOW REPORT No.

43152



© 2020

Lloyd's Register
Approved 8.1.23.
Foundation

W122-0099