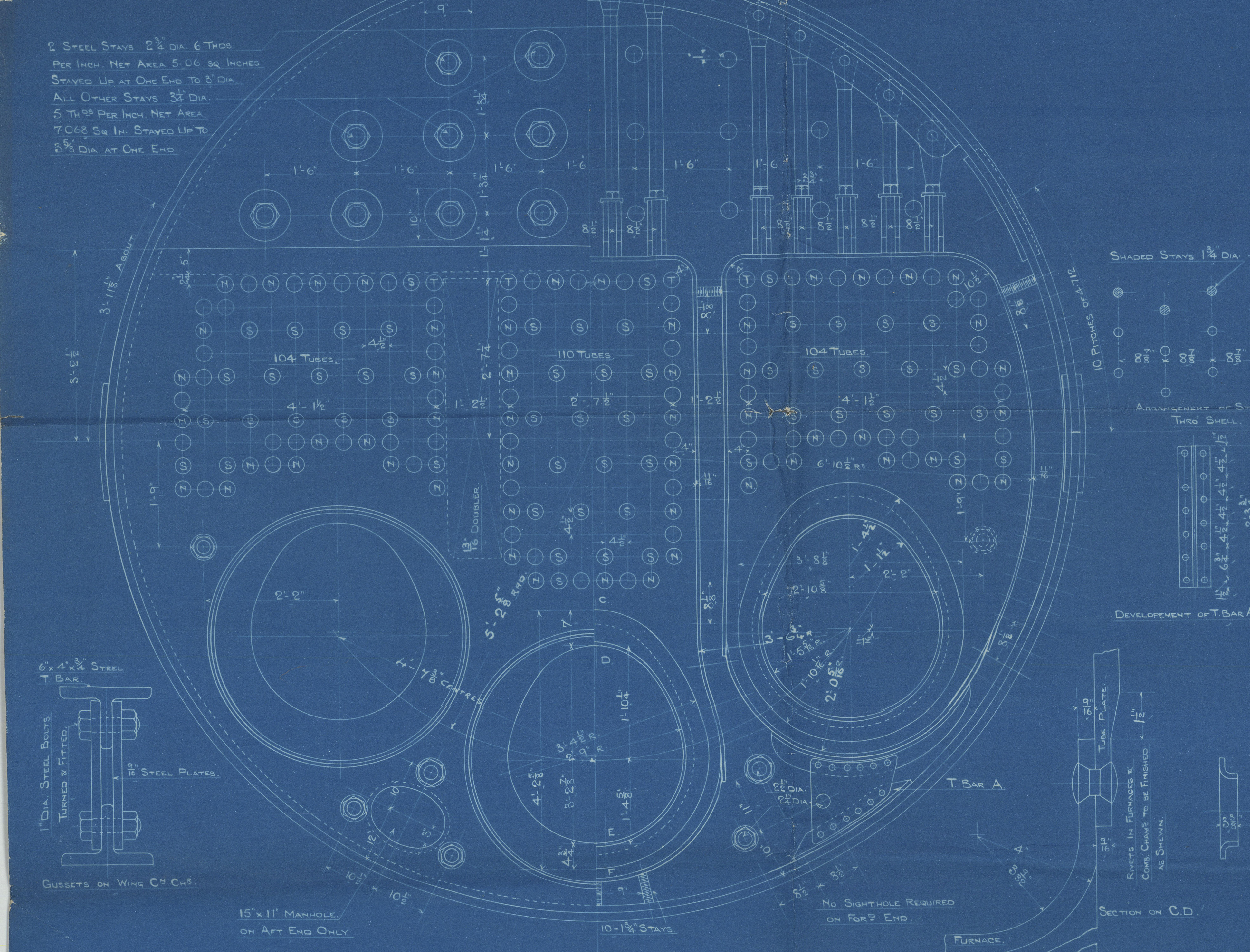


DR. N^o 12987

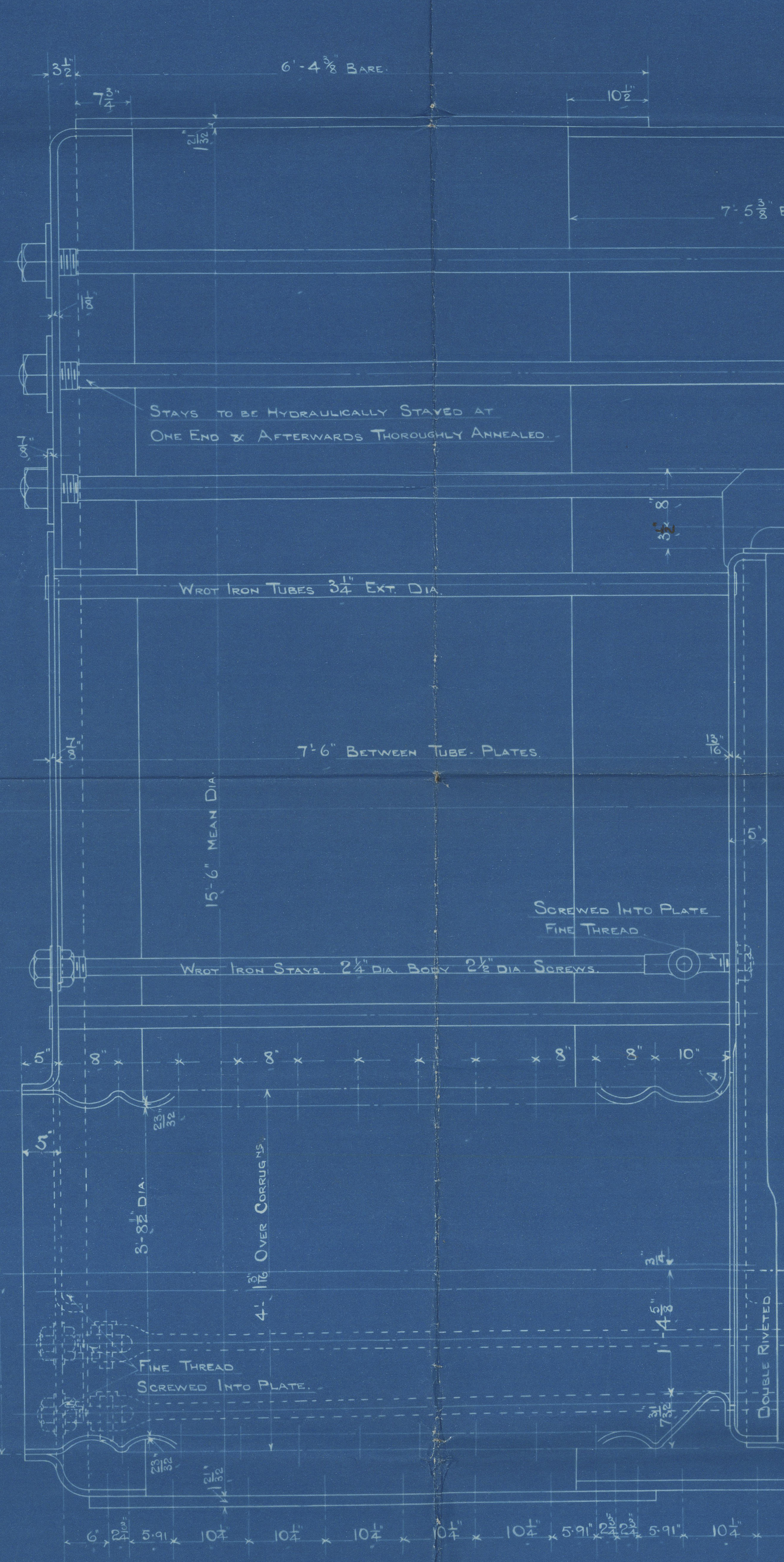
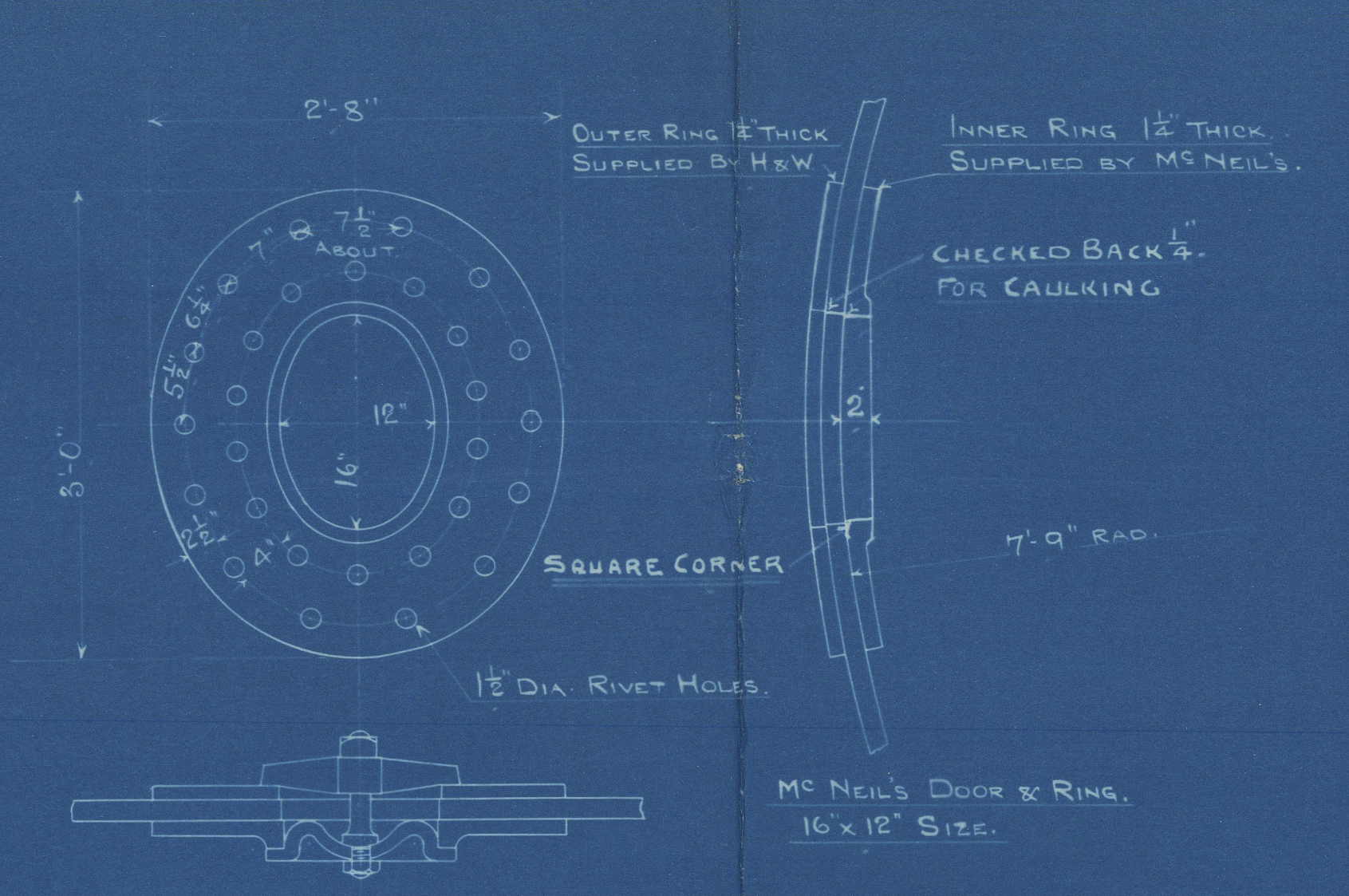


PARTICULARS OF RIVETING.

LONGITUDINAL SEAMS, DOUBLE BUTT STRAPS, RIVETED AS SHOWN.
STRENGTH OF PLATE 83.75%. STRENGTH OF RIVET 94%.
CIRCUMFERENTIAL SEAMS, TRIPLE RIVETED AT CENTRE AS SHOWN.
DOUBLE " ENDS

END PLATES.
FURNACES & C^o CH^o

LAPPED, DOUBLE RIVETED, 1 1/2" RIVETS, 3 3/8" PITCH.
DOUBLE RIVETED, 3 RIVETS, 3 PITCH. SINGLE RIVETED, 7/8" RIVETS, 2 1/2" PITCH.
ALL PLATES & RIVETS STEEL. ALL HOLES DRILLED IN PLACE.
MINIMUM TENSILE STRENGTH OF SHELL PLATES 29 TONS PER SQ INCH.
MINIMUM BUTT STRAPS 33 TONS
MINIMUM 32 TONS
MINIMUM ENDS FURNACES & C^o CH^o 26 TONS
MINIMUM 30 TONS



SECTION ON C.D.

SECTION ON G.H.

SECTION THRO' E.F.

SECTION THRO' F.F.

SECTION THRO' G.F.

SECTION THRO' H.F.

SECTION THRO' I.F.

SECTION THRO' J.F.

SECTION THRO' K.F.

SECTION THRO' L.F.

SECTION THRO' M.F.

SECTION THRO' N.F.

SECTION THRO' O.F.

SECTION THRO' P.F.

SECTION THRO' Q.F.

SECTION THRO' R.F.

SECTION THRO' S.F.

SECTION THRO' T.F.

SECTION THRO' U.F.

SECTION THRO' V.F.

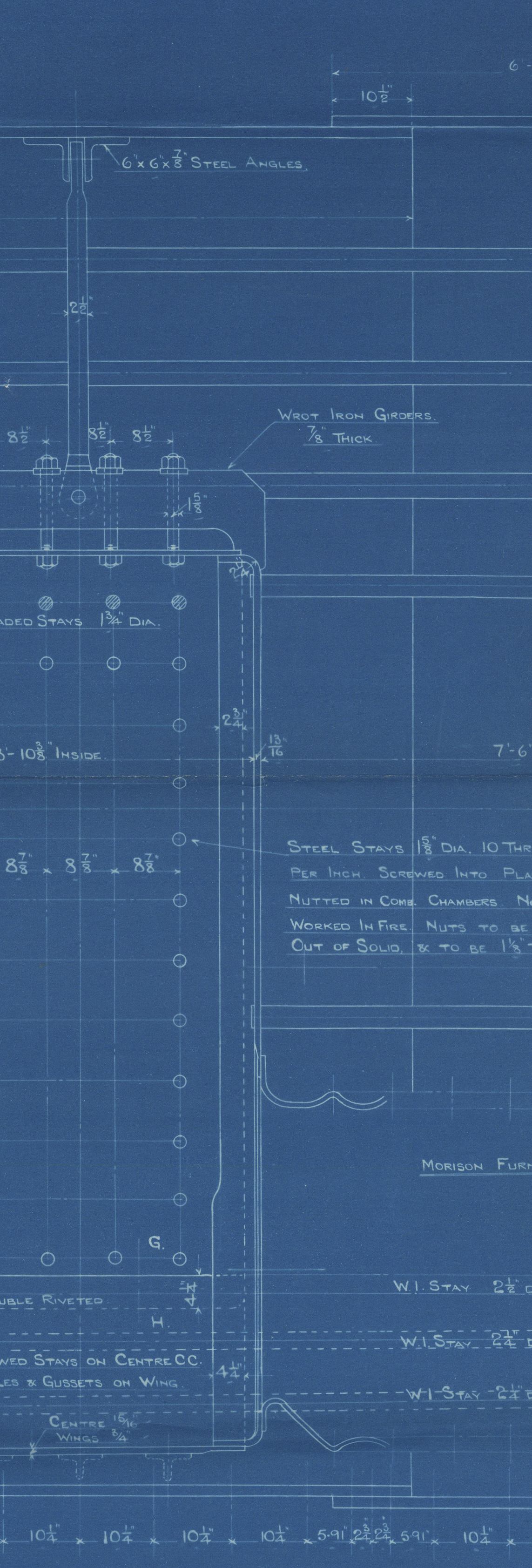
SECTION THRO' W.F.

SECTION THRO' X.F.

SECTION THRO' Y.F.

SECTION THRO' Z.F.

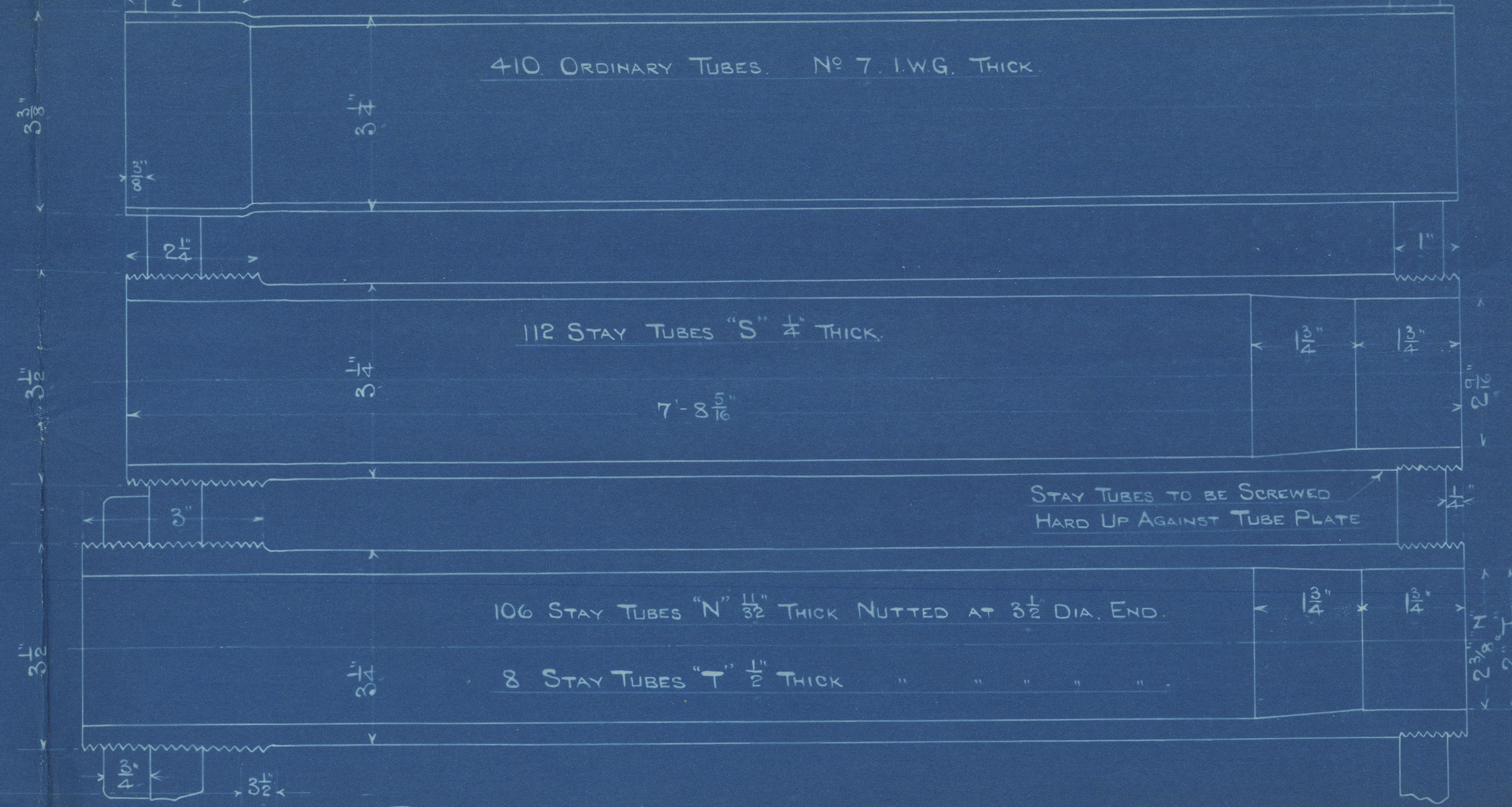
HEATING SURFACE ETC.	1 BOILER.	3 BOILERS.
TUBES.	4070	12210
FURNACES.	346	1038
COMB. CHAM ^s	260	780
FRONT TUBE-PLATE.	62	186
TOTAL	4738	14214
GRATE AREA (5'-6" BAR)	152.4	457.2
STEAM SPACE	708	2124



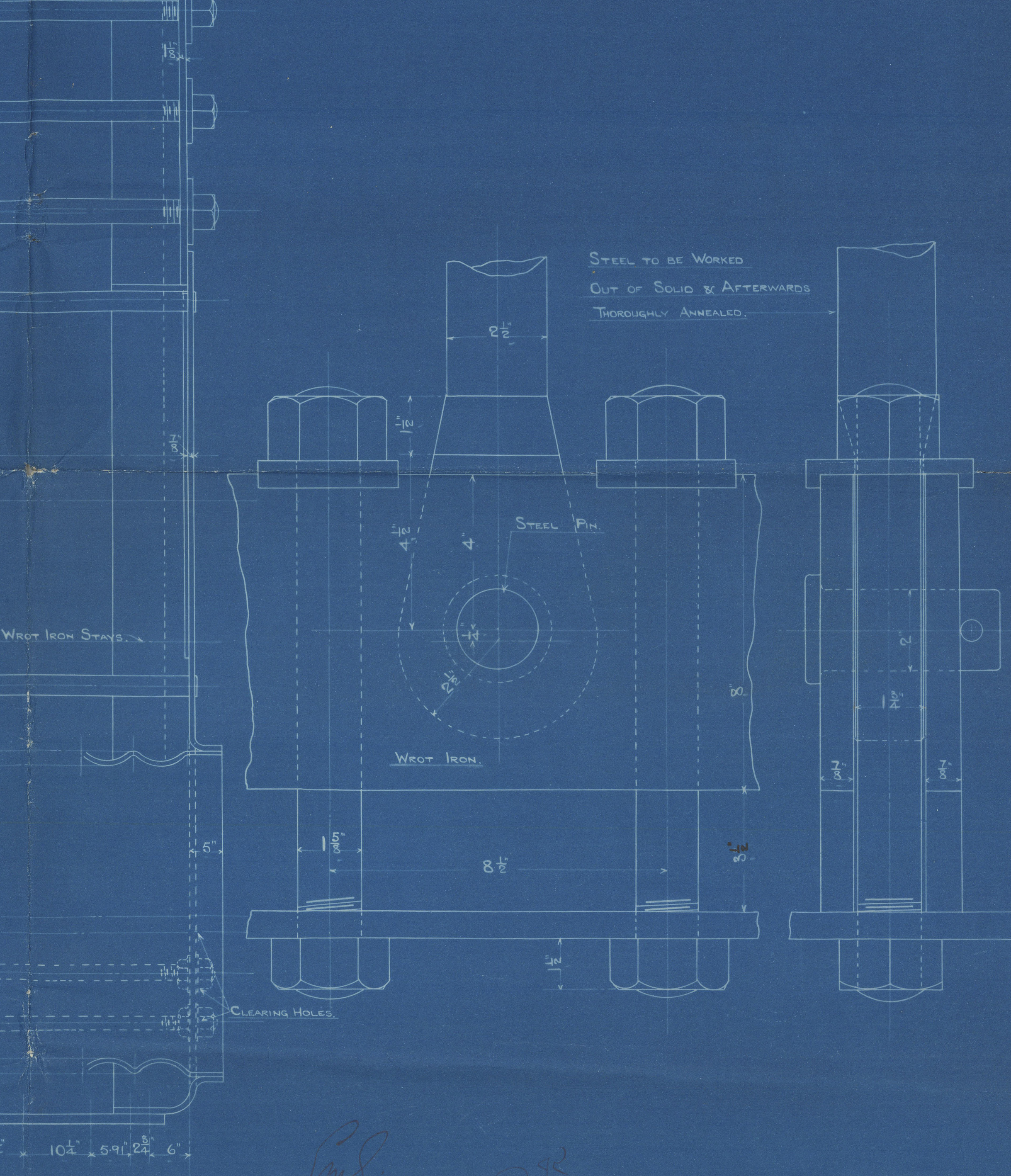
WORKING PRESSURE 215 LBS PER SQ INCH.

TEST 430 LBS.

9/11/15



TOTAL 636. WROUGHT IRON BOILER TUBES PER BOILER.
STAY TUBES TO BE SCREWED 10 THREADS PER INCH.
CONTINUOUS THREAD.
PLAIN & "S" TUBES TO BE EXPANDED IN BOTH PLATES.
"N" & "T" TUBES TO BE CAULKED INSIDE & OUTSIDE.



3-OFF-

D. E. MAIN BOILER. N^o 460^{C/B}

UNDER SURVEY OF BOARD OF TRADE.

LLOYD'S.

SCALE 1" = ONE FOOT.

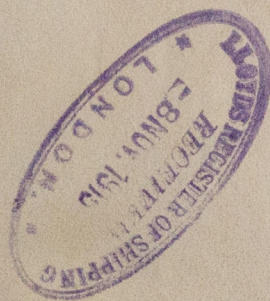
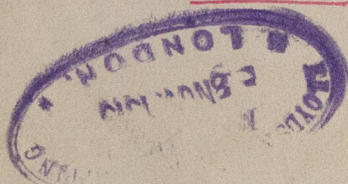
26.10.15

LR

W122 - 0026

Belfast
Haveland & Moffatt
S.S. 4606-B

D. End Baulby
S.S. "Millais"
n.n. "Scottish Star" Gl. 36829.



© 2020

Lloyd's Register
Foundation