

24.1.01
 21.2.01
 18.5.01
 18.7.01
 16.9.01

See letter from builders
 May 10th 1901 re date
 of contract Page 14/5/01

PROFILE. S. S. 91.

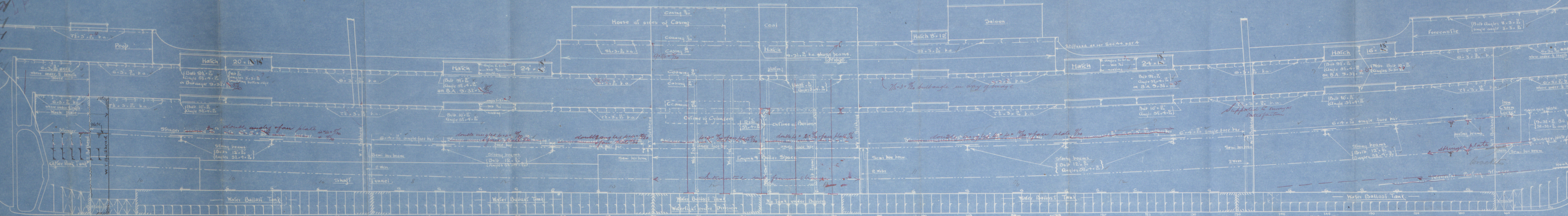
JOHN PRIESTMAN & CO

SUNDERLAND.

1911/01

Scale $\frac{1}{8}$ inch = One Foot.

Dimensions
 Length B.P. --- 350'-0"
 Breadth Ex. --- 46'-6"
 Depth Mid Spar Deck --- 29'-3"
 Main Deck --- 22'-5"



Frames in After Peak only angles 5 1/2 x 3 1/2 x 3/8 reverse bars to Upper Deck 4 x 3 1/2 x 3/8 every frame.

*G = Gusset plates connecting outside brackets with inner bottom plating.

Web framed & spars apart

Casings & Straight brackles sides stiffened as per sect 15 para 4

Sketch of Gusset plates connecting outside brackets with inner bottom plating = G

Plates of this size increased use filled where above 4 spaces apart

Plates of this size filled where 4 spaces apart

Single bars 4 x 3 1/2 x 3/8 with 12-8 rivets, in lieu of gusset plates - 8' 0" apart.

Margin Plate

Bottom strengthened forward as per rules

17/1
 24/1/01

PROFILE WIZIF-0200

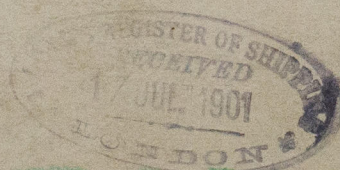
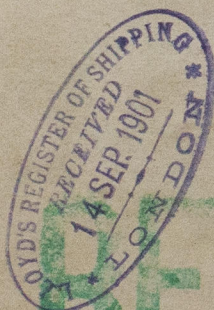
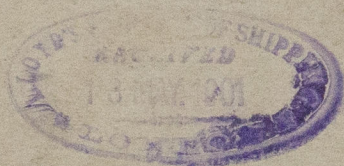
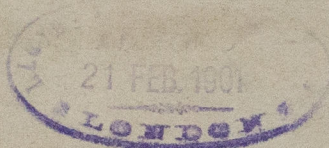
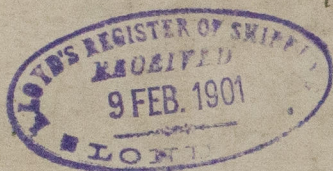
MESSRS J. PRIESTMAN & CO^S

S.S. No. 91

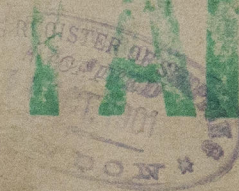
S.S. ~~OPANA~~



Sunderland. No 20491.



REMAIN



© 2020

Lloyd's Register
Foundation