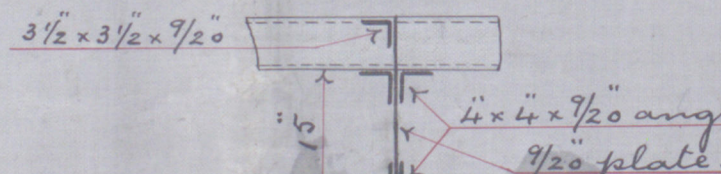


SHIP N<sup>o</sup> 717

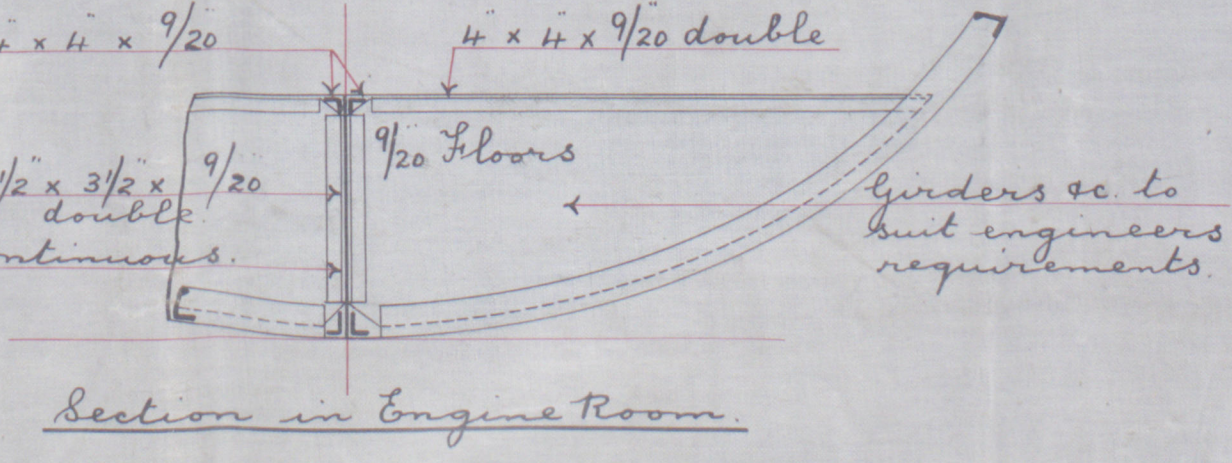
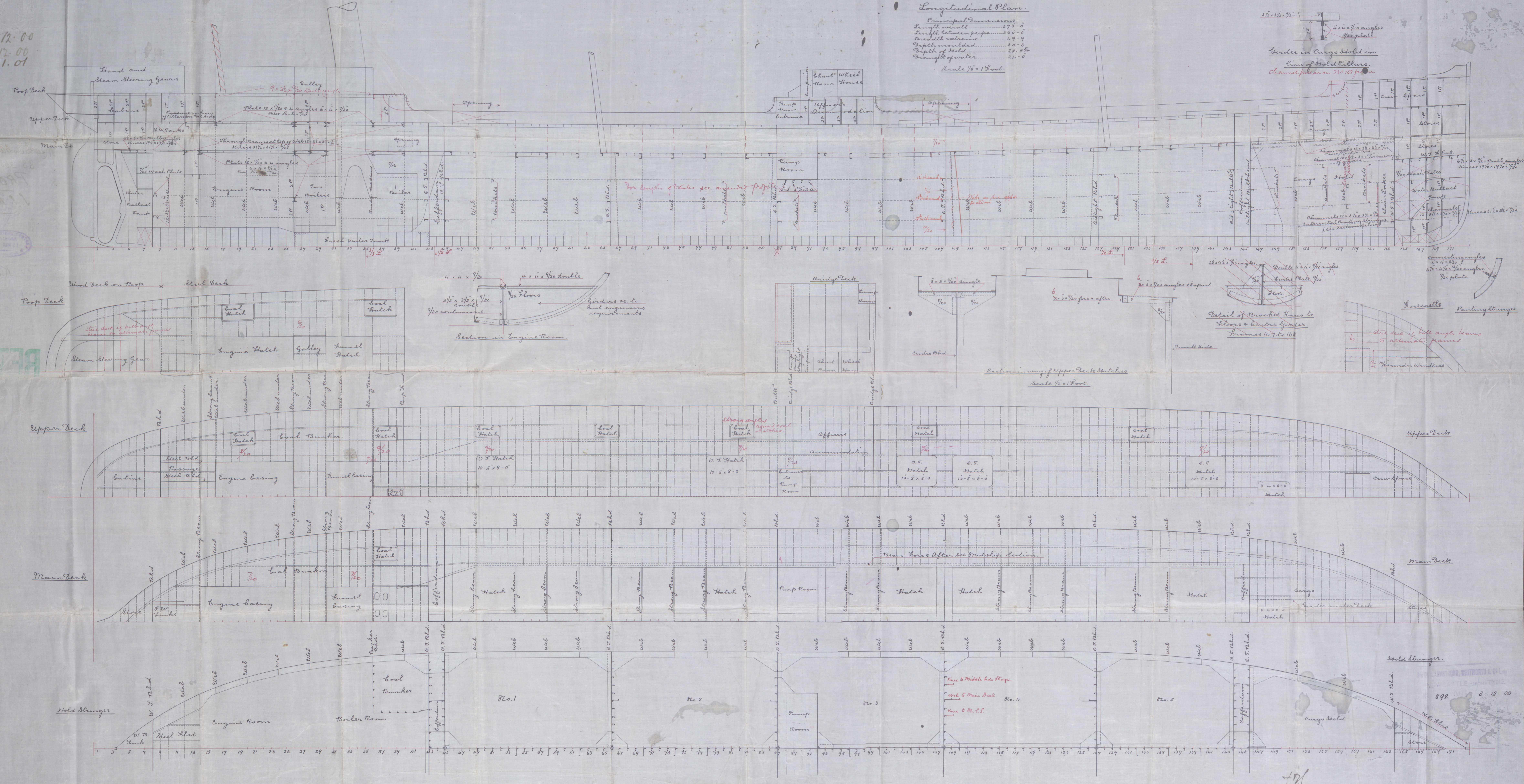
Longitudinal Plan.

Principal Dimensions.  
Length overall 175'-0"  
Length between perps 160'-0"  
Breadth extreme 49'-9"  
Depth moulded 30'-3"  
Depth of hold 28'-8"  
Breadth of water 24'-0"

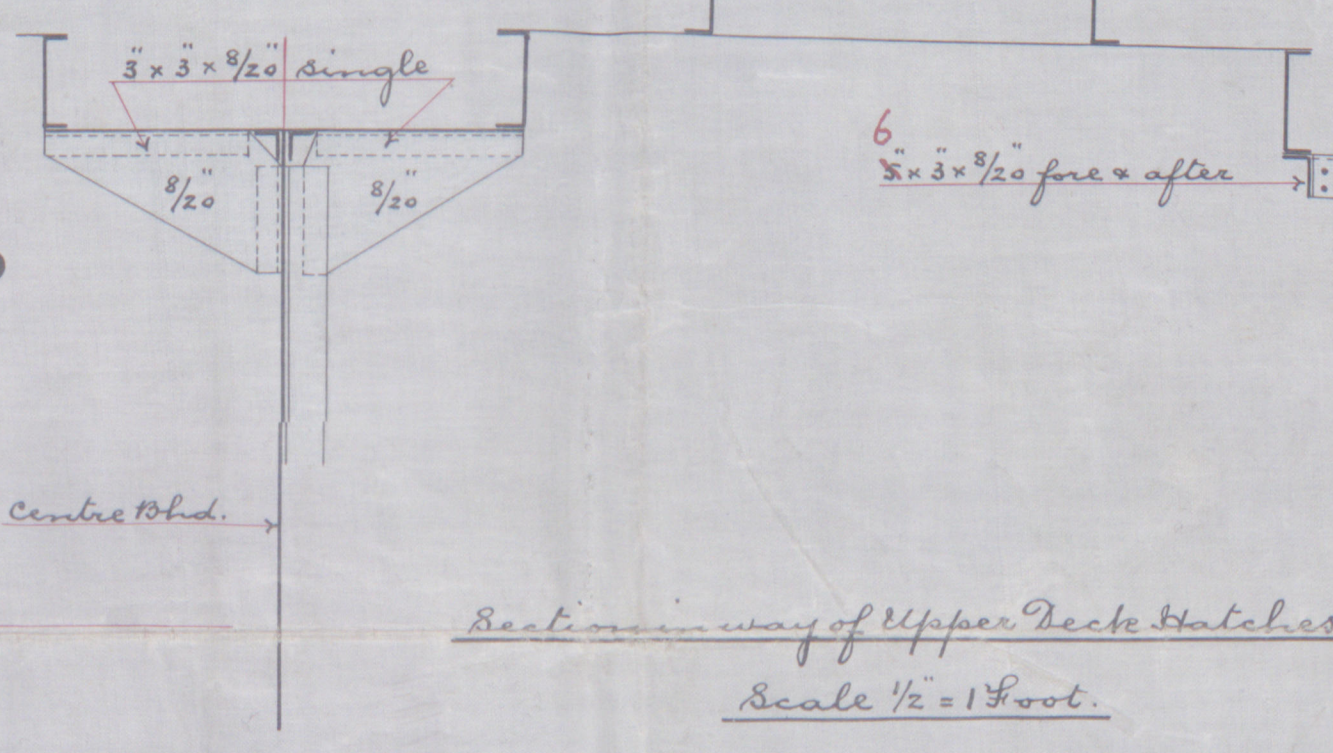
Scale 1/8" = 1 Foot.



Arrangement of Hold Pillars.  
Channel pillars on 710 lbs per sq ft

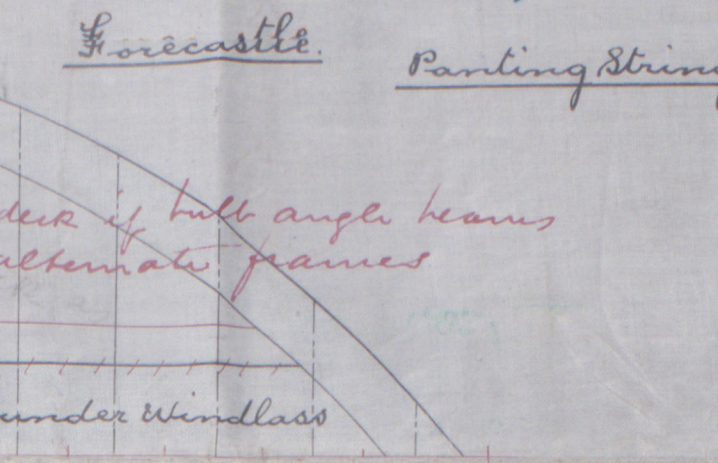


Section in Engine Room



Section of Upper Deck Hatches  
Scale 1/8" = 1 Foot.

Detail of Bracket Lines to  
Floors & Centre Girders.  
Frames 117 to 168



Forecastle Porting Stringer

10.12.00  
28.12.00  
11.1.01



Messrs W & A Armstrong & Co Ltd

SS 360' No 717

PROFILE

S. S. Kinsman.

W1217-0071



S. S. Kinsman

107 Tons  
42696.

© 2020

Lloyd's Register  
Foundation