

11/3/01

CHECKED BY *P.J.*
DATE *Feb 28 1901*
TIME CHARGED TO *N*

BOILER, CONTRACT NO 543.

MESSRS SIR W.G. ARMSTRONG WHITWORTH & CO S.S. NO 717

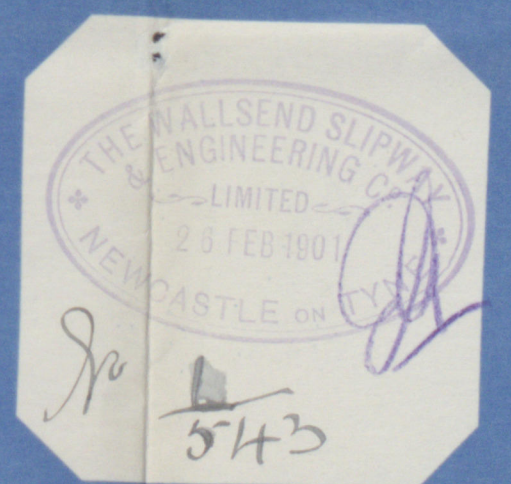
TO BE CONSTRUCTED TO PASS LLOYD'S REQUIREMENTS

3, OFF THIS

SCALE 1" = 1 FT

FEB. 19TH 1901.

HEATING SURFACE	SQR. FT.
TUBES	1460
FURNACES	135
COMBUSTION CHAMBERS.	193
TUBE PLATES	68
1, BOILER	1856 SQR. FT.
TOTAL 3 BOILERS	5568 SQR. FT.
WORKING PRESSURE	180 LBS. PER. SQR. INCH
TEST	360 " " " "



BOTTOM MANHOLES ON BACK OF 2 AFT BOILERS

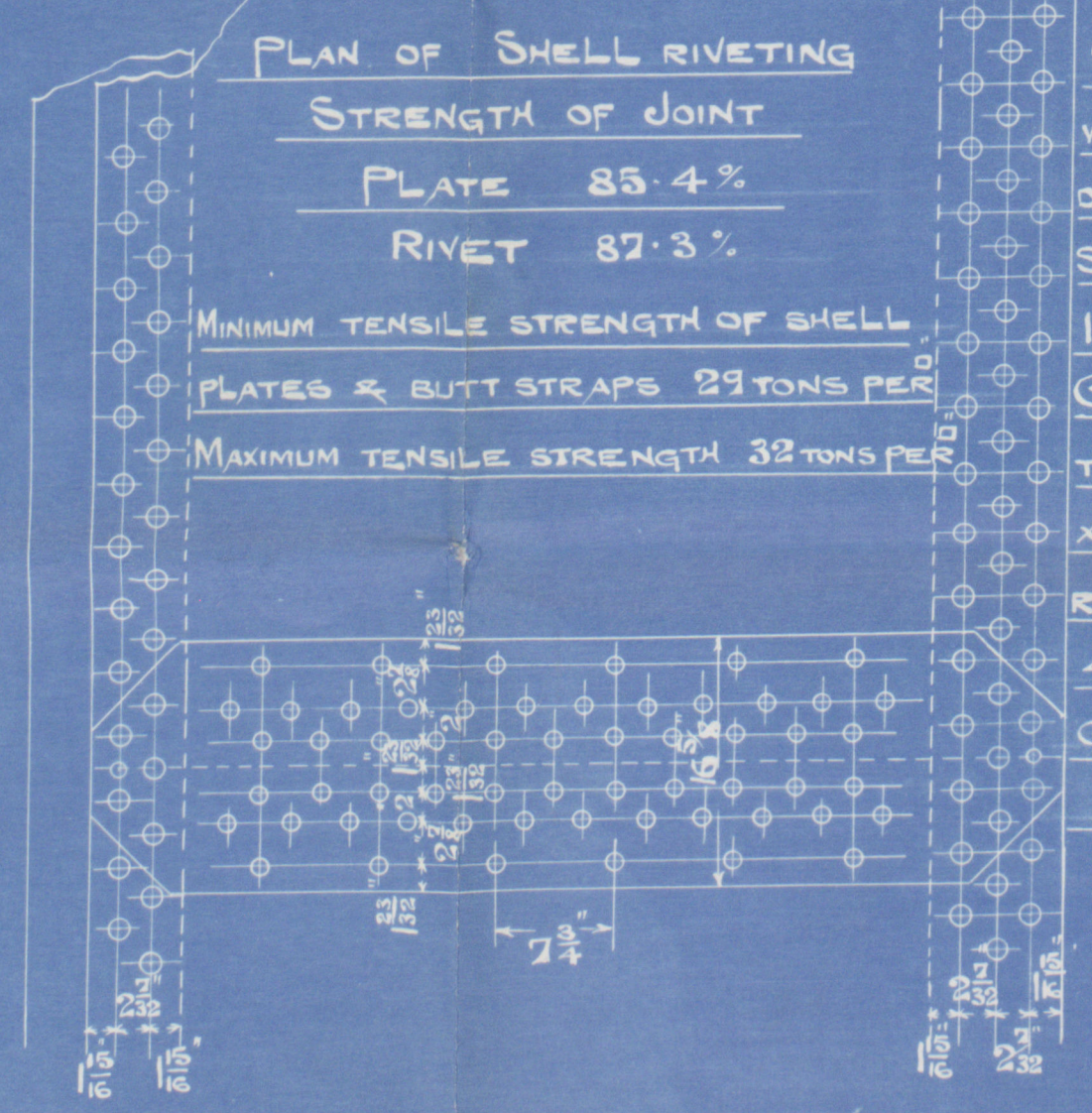
AFT.

BOTTOM MANHOLES ON FRONT OF FORWARD BOILER

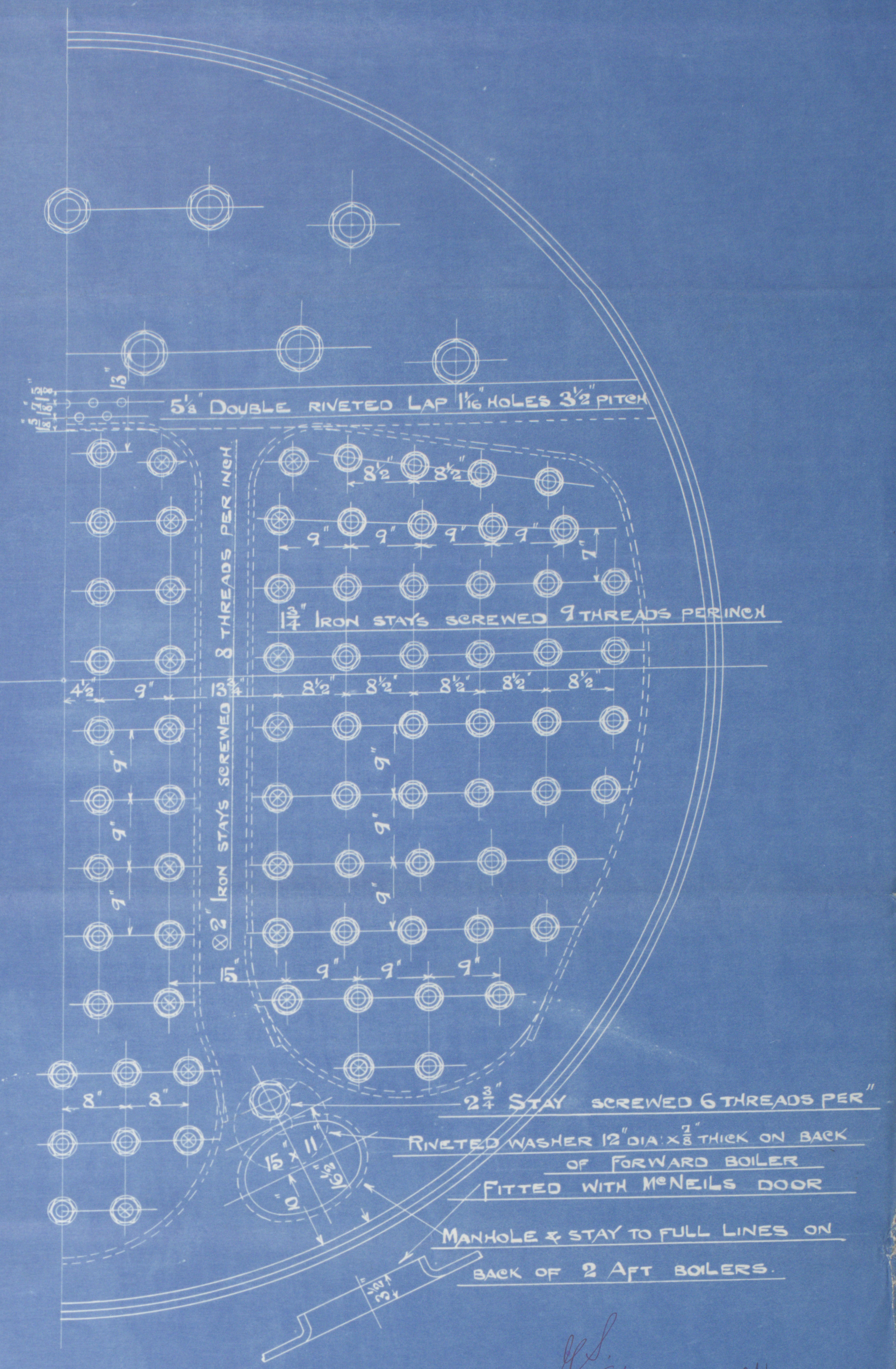
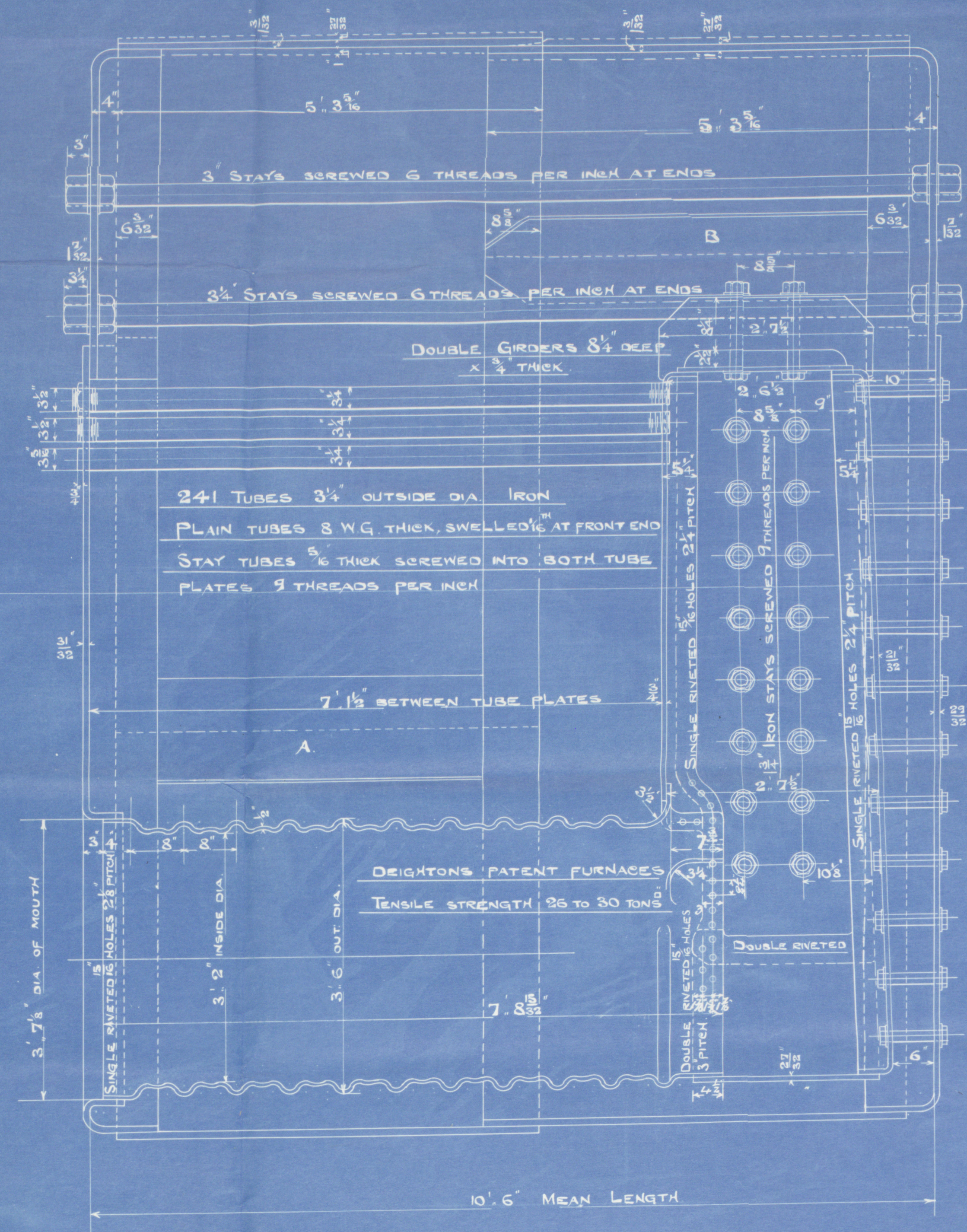
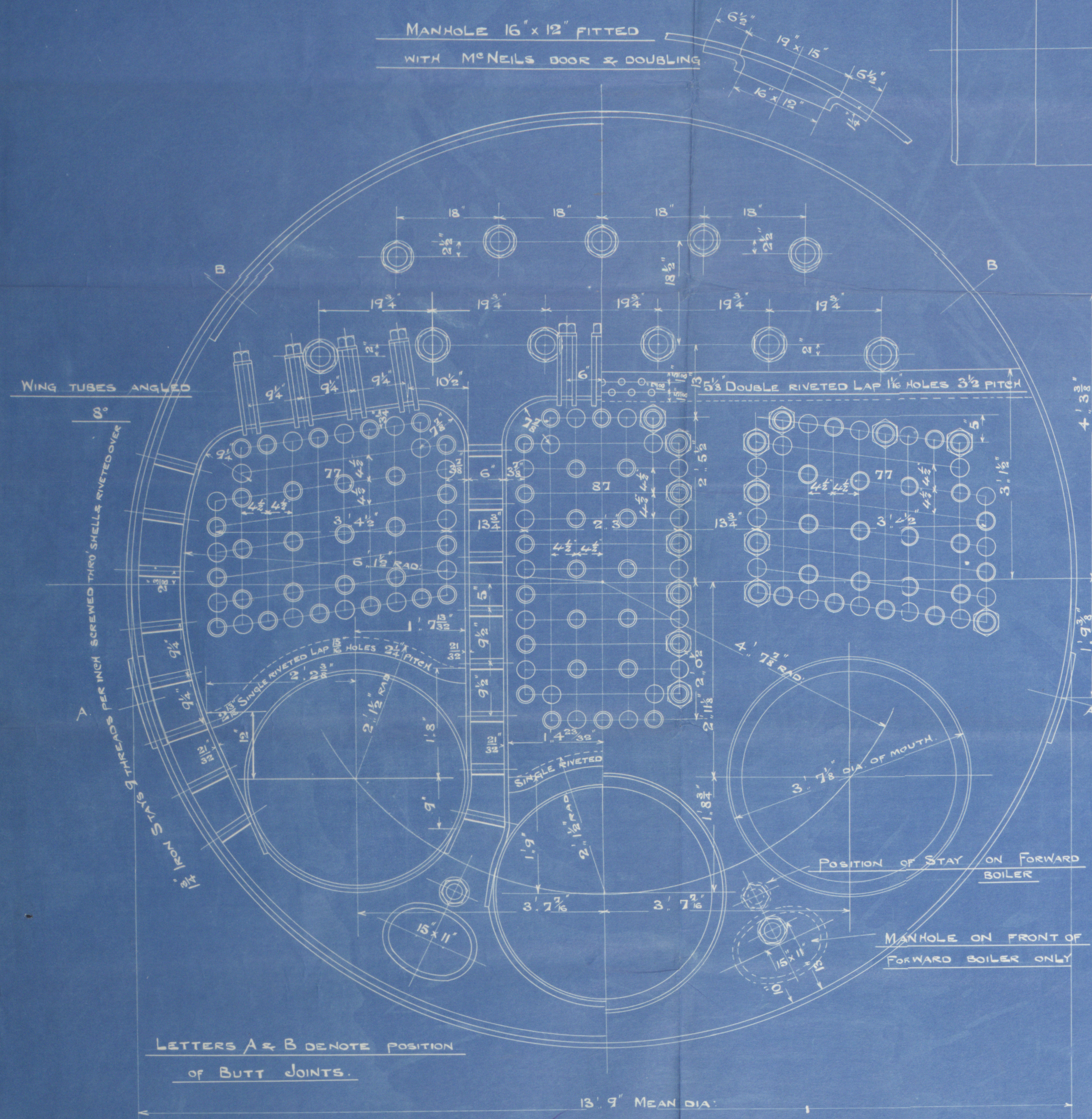
FORWARD

PLATES MANUFACTURED BY
JOHN SPENCER & SON NEWBURN

PLATES	STEEL
RIVETS	"
MAIN STAYS	"
CHAMBER STAYS	IRON
TUBES	"



SHELL HYDRAULIC RIVETED WHERE PRACTICABLE. ALL HOLES DRILLED IN PLACE AFTER BENDING SHELL PLATES 1 3/8" THICK RIVET HOLES 1 1/8" DIA. X 7 3/4" PITCH. CENTRE CIRCUMFERENTIAL SEAMS TREBLE RIVETED RIVET HOLES 1 9/16" DIA. X 4 1/4" PITCH. END SEAMS DOUBLE RIVETED. RIVET HOLES 1 3/8" DIA. X 4 1/4" PITCH. OUTSIDE BUTT STRAPS 3/32" THICK INSIDE " " 1" "



11/3/01

11/3/01

11/3/01

Lloyd's Register

W1217-0068.

Walkend Slipway Co

N° 543

Armstrong Whitworth & Co
S/S N° 414

3 S E

W P 180%

Steel 29-32

6125
19-7-01



S/S "KINSMAN"

N° 6125
LLOYD'S TEST
360%
19-7-01 TR. H

S.S. "Kinsman"

Newcastle Report

N° 42696



© 2020

Lloyd's Register
Foundation