

2-OFF FOR ONE SHIP

I-THUS. I-OTHER HAND.

No 2653.

MAIN BOILER.

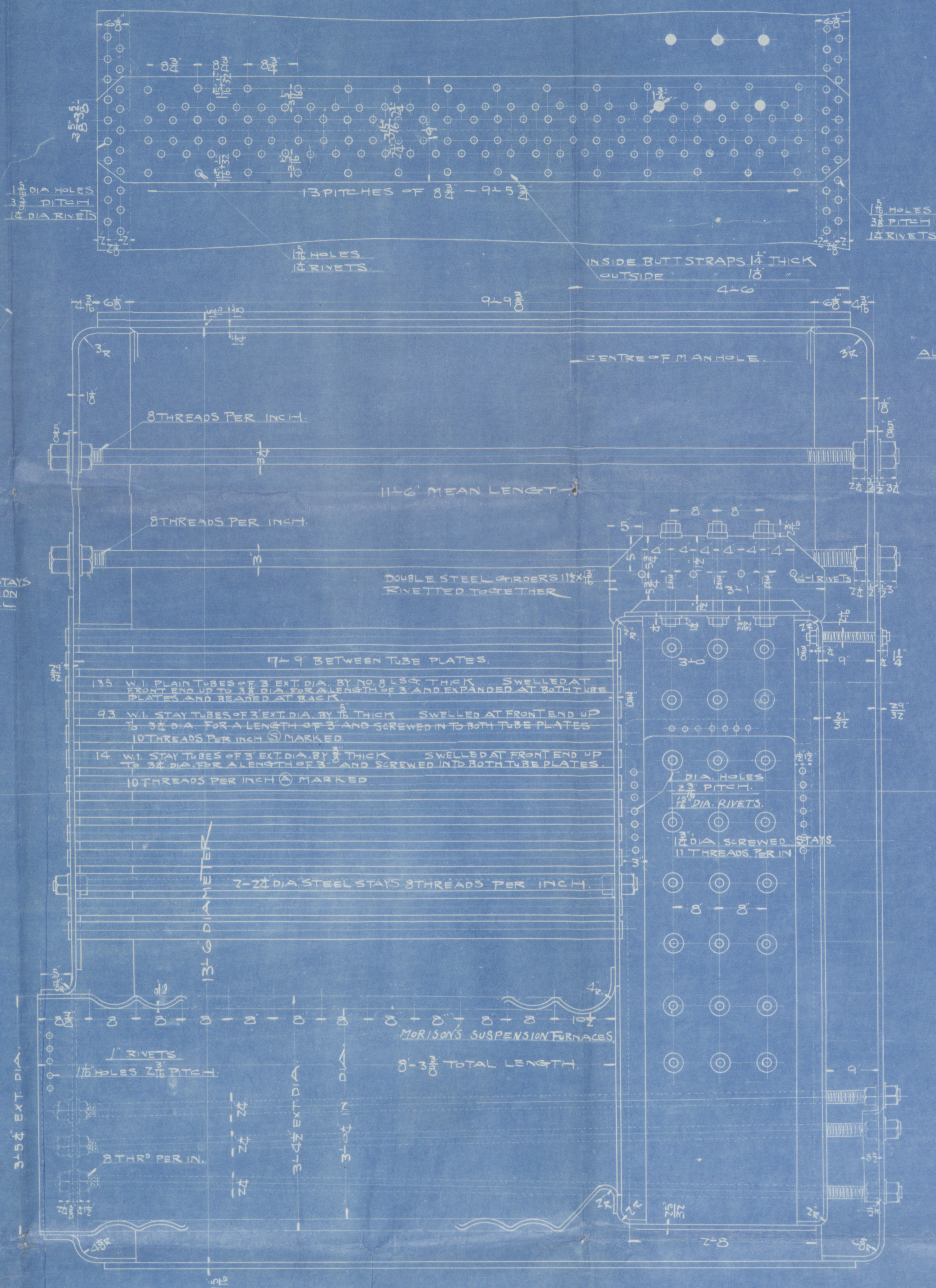
SCALE 1"=1FOOT.

PARTICULARS	
DIAMETER	13'-6"
LENGTH	11'-6"
WORKING PRESSURE	200 ^{BS}
TEST PRESSURE	400 ^{BS}
LENGTH OF FIRE BARS	5'-3"
HEATING SURFACE OF TUBES	473 ⁹
TOTAL HEATING SURFACE	1852 ⁹
GRATE AREA	4725 ⁹
RATIO OF H.S. TO F.A.	39.70
TOTAL NO OF TUBES	247
NO OF PLAIN TUBES NO 8 L.S. 9 THICK	135
STAY	93
SCREWED STAYS 2 1/2" DIA.	14
	189
	203

17 X 16 MENNELS.
PATENT HOLE DOOR
FITTED

24-1/2" RIVETS
1 1/2" RIVET HOLES

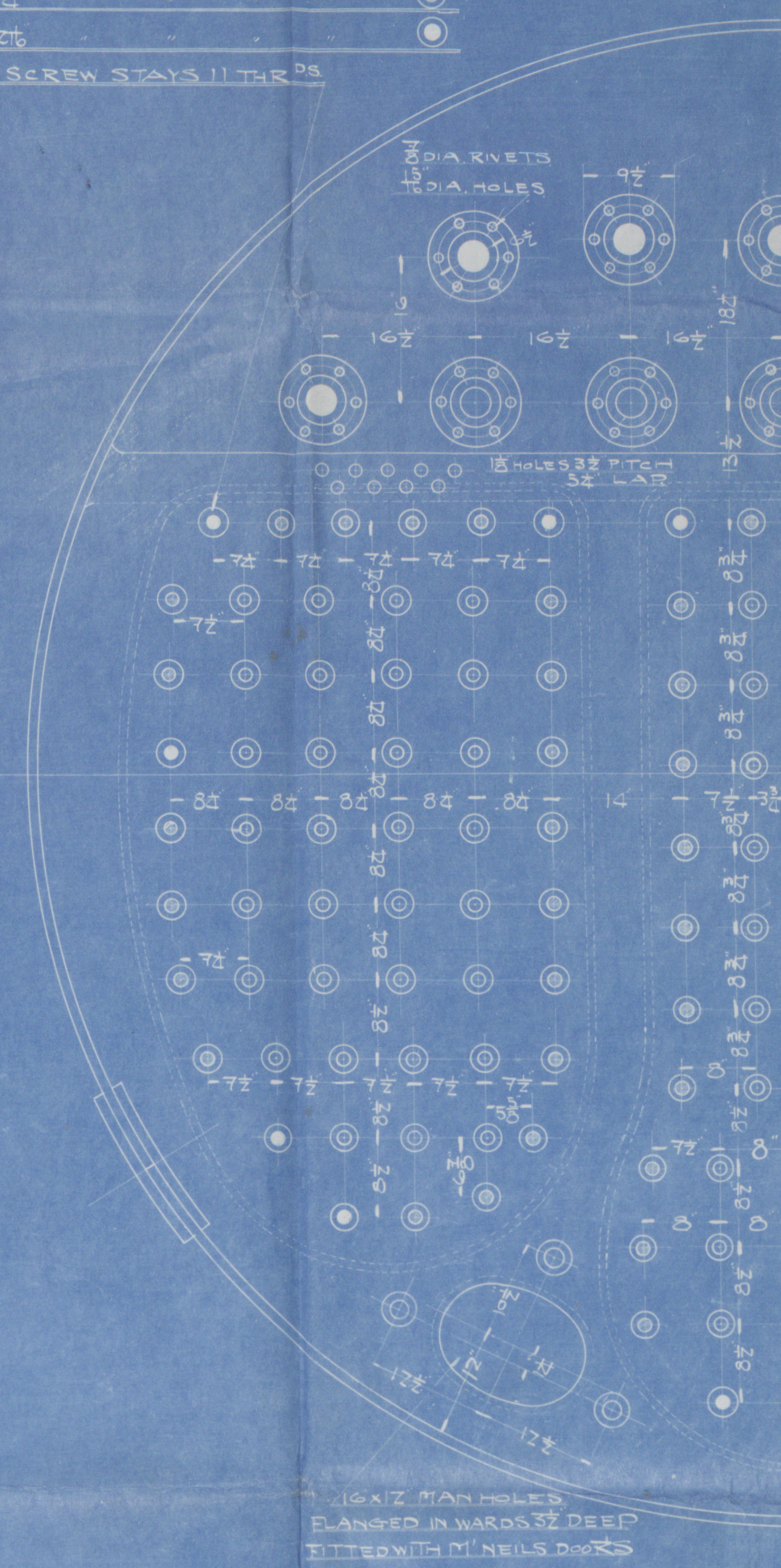
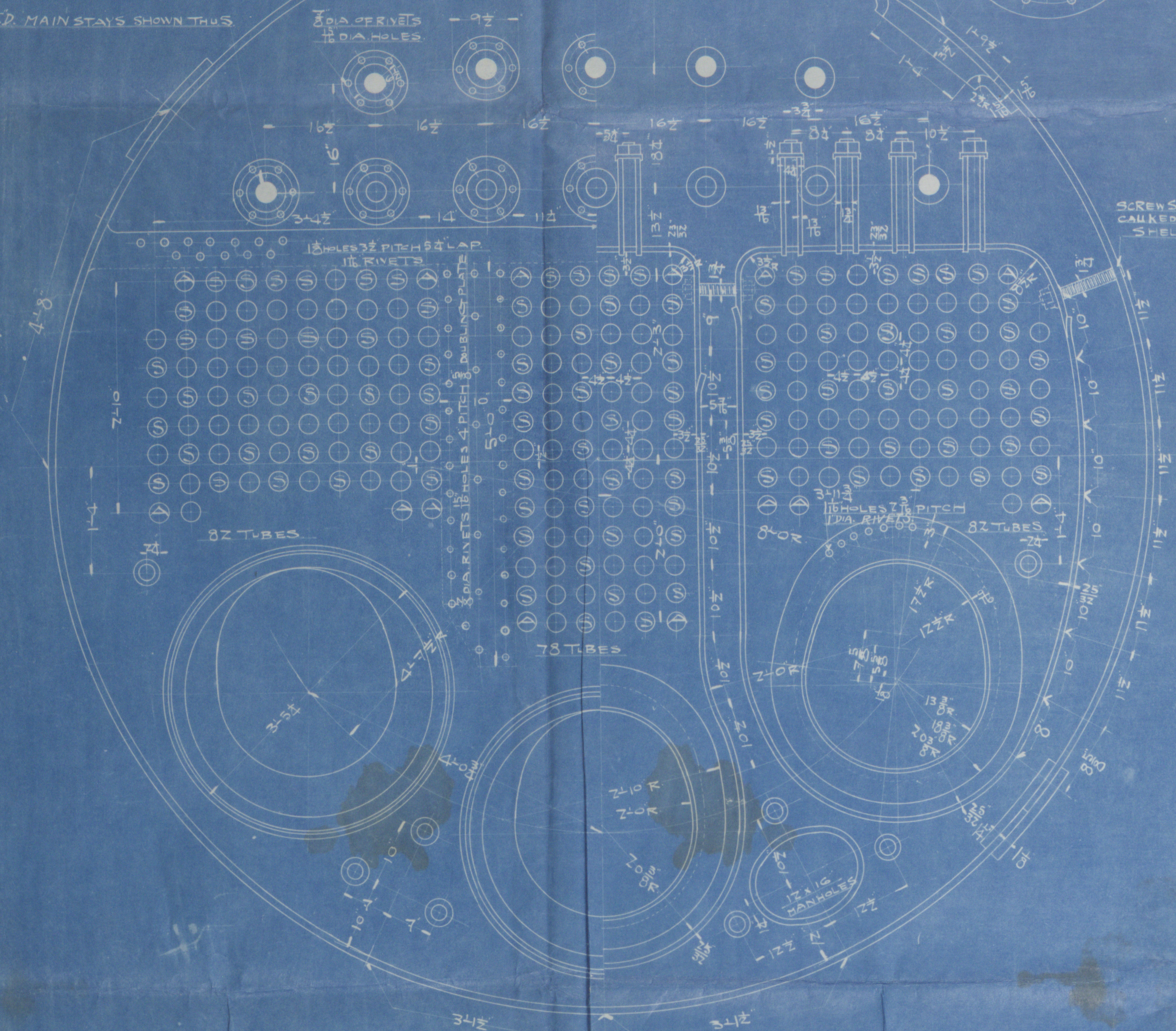
PLAN OF SHELL RIVETING



TENSILE STRENGTH	
SHELL PLATES	28 TO 32 TONS
BUTT STRAPS	28 TO 32 TONS
MAN HOLE DOUBLING	28 TO 32 TONS
GRATE PLATES	28 TO 32 TONS
OTHER PLATES	28 TO 32 TONS
SOLID STEEL STAYS	28 TO 32 TONS
SCREWED STAYS	28 TO 32 TONS
FURNACE	28 TO 32 TONS
RIVET BARS	28 TO 32 TONS

1 1/2" SCREWED STAYS SHOWN THUS:
1 1/2" DIA. HOLES
2 1/2" DIA. HOLES
ALL SCREW STAYS 11 THRS

3/4" D. MAIN STAYS SHOWN THUS



製作番号
2653
鈴木商店
造船部

第拾五番取用
主汽罐之圖

船用材料
備考

通年	通月	通日	通時
1	2	3	4
5	6	7	8
9	10	11	12
13	14	15	16
17	18	19	20
21	22	23	24
25	26	27	28
29	30	31	32

縮圖
縮圖
年月日

神戸製鋼所
製鋼
主生
製鋼
製鋼

© 2020
Lloyds Register
W1712-0216

W1212-0216

Main Boilers.

P. S. Yugo Maru

No 15.

Harima Dock yard

REMAIN



© 2020

Lloyd's Register
Foundation