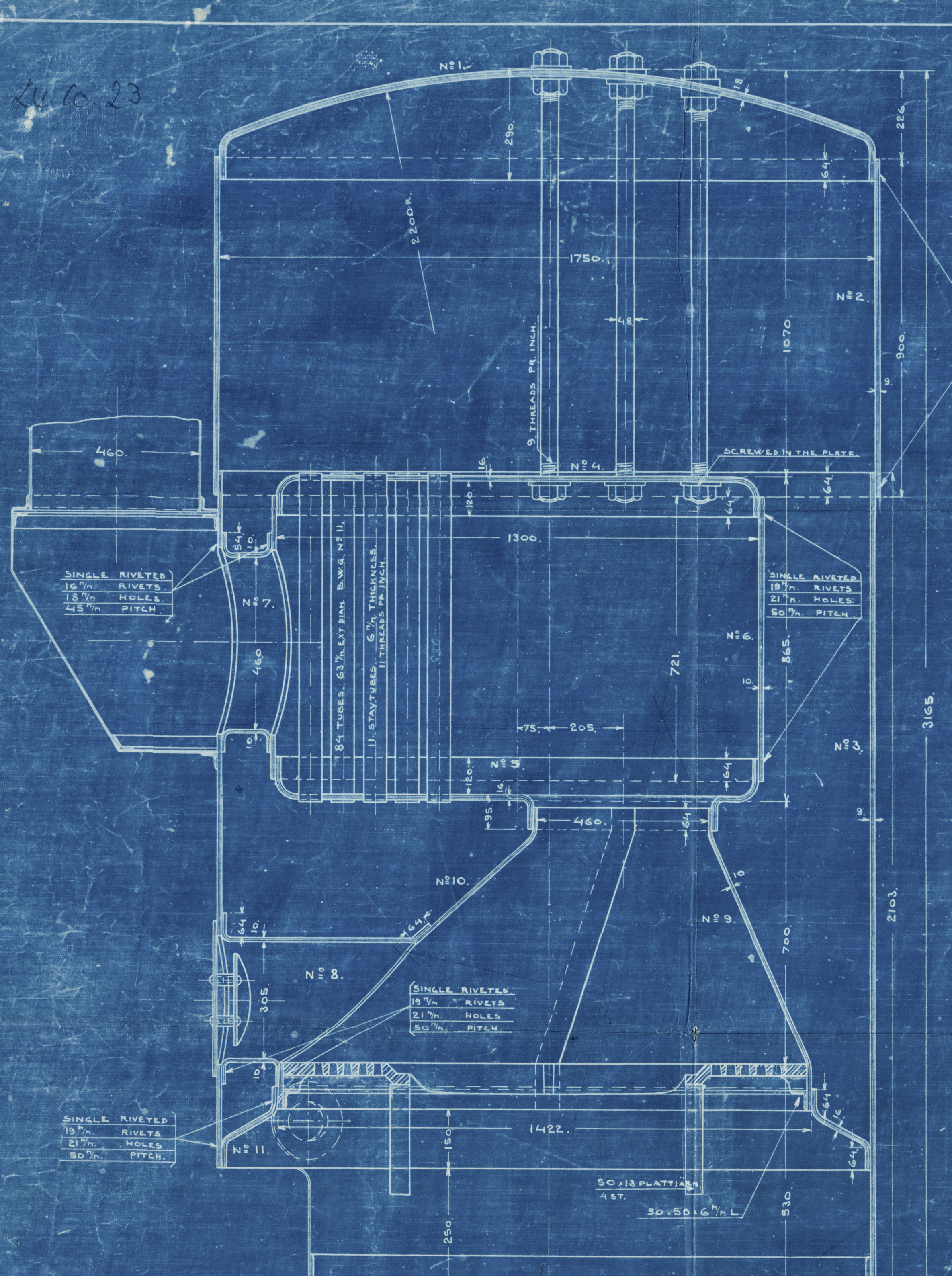
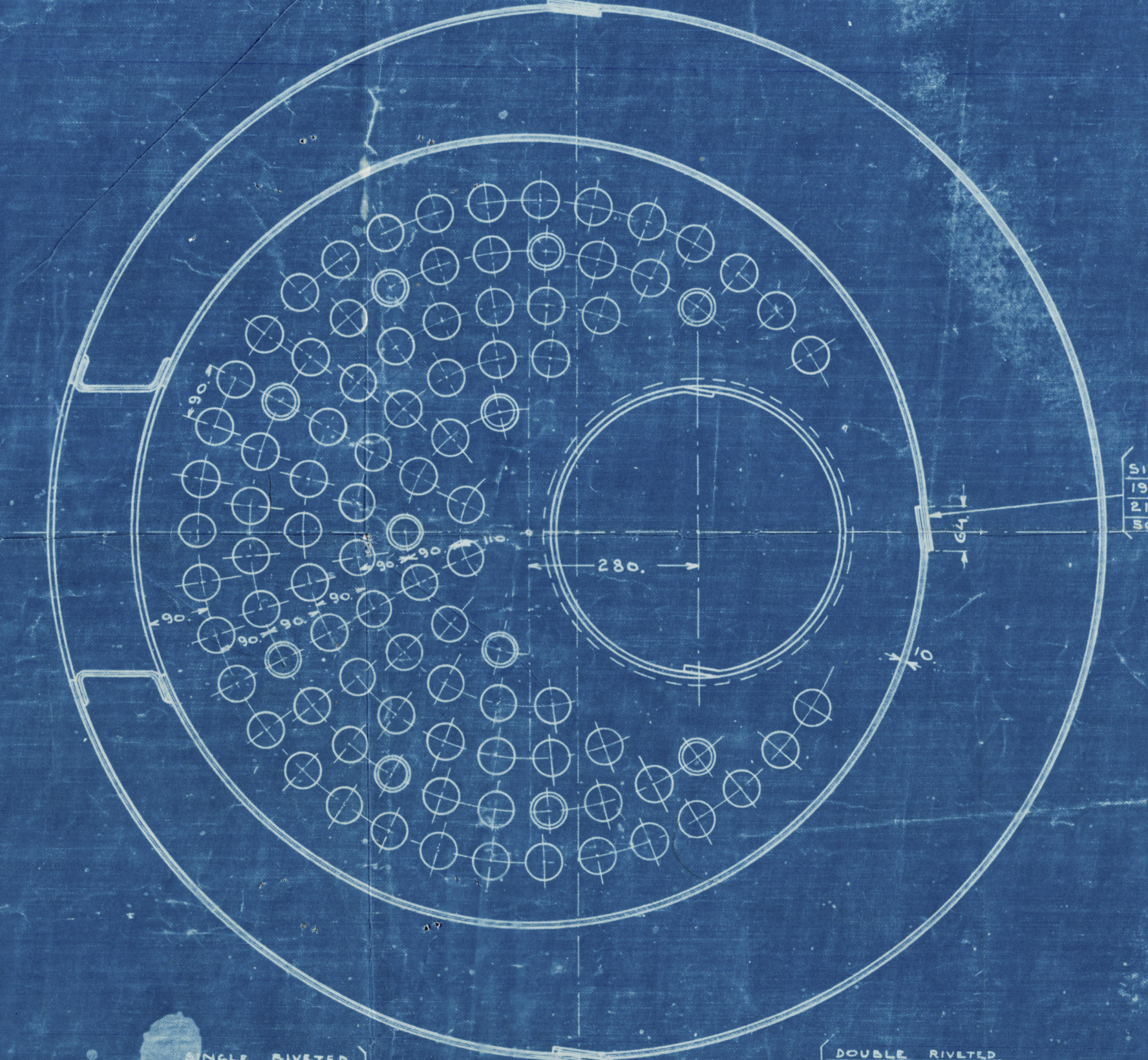
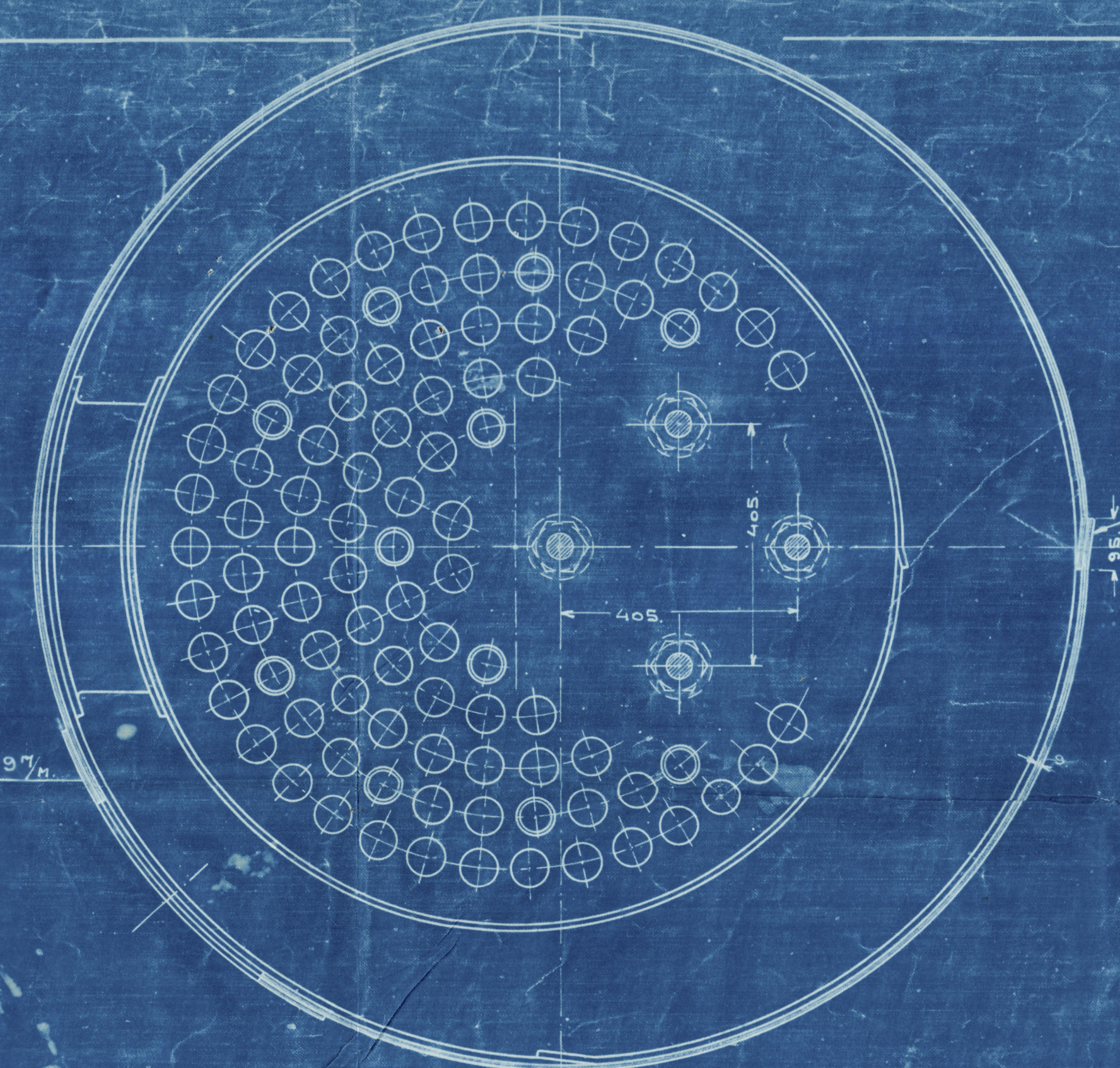


24.6.23



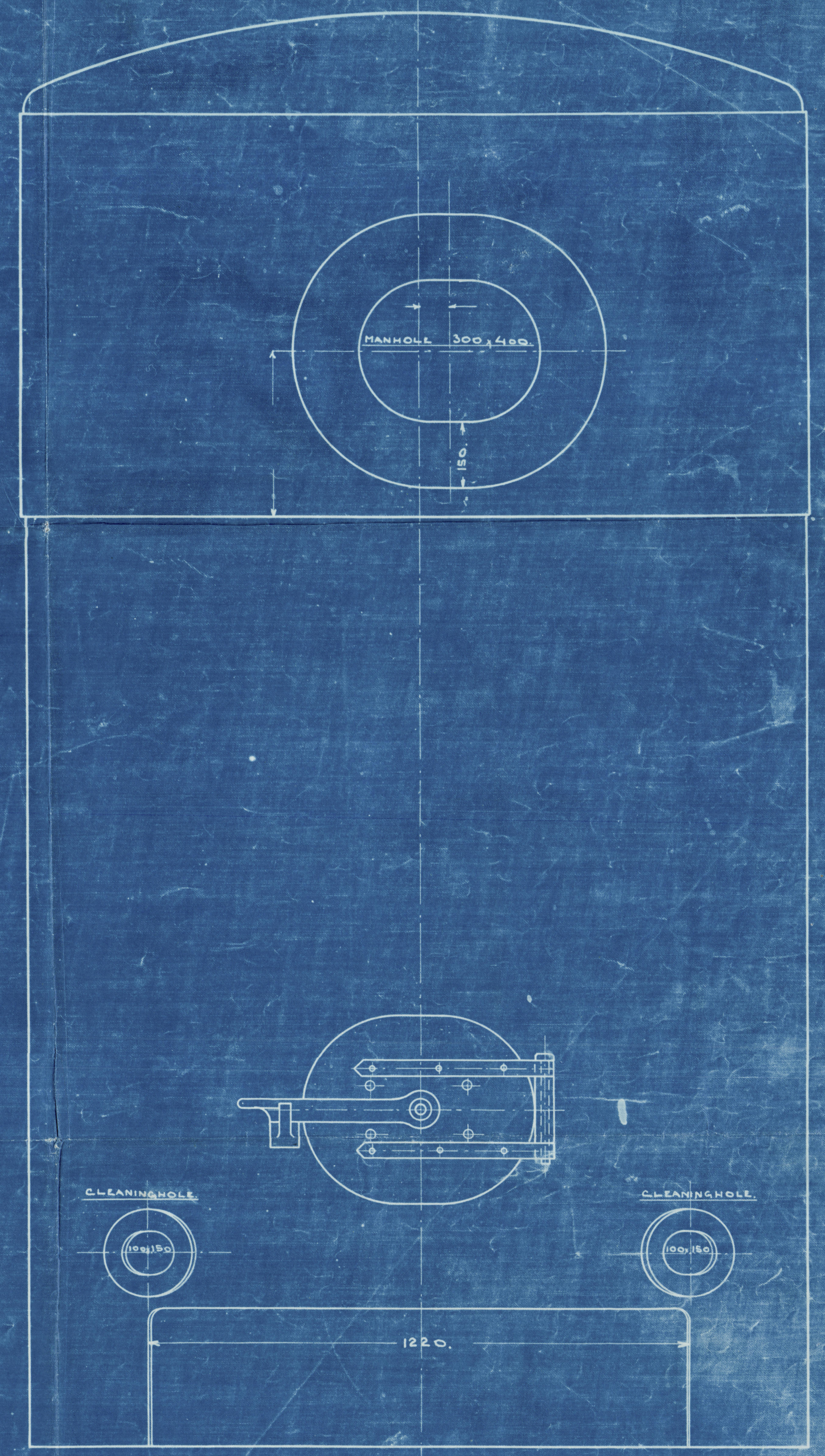
SINGLE RIVETED
19mm RIVETS
21mm HOLES
50mm PITCH

DOUBLE RIVETED
19mm RIVETS
21mm HOLES
65mm PITCH



SINGLE RIVETED
19mm RIVETS
21mm HOLES
50mm PITCH

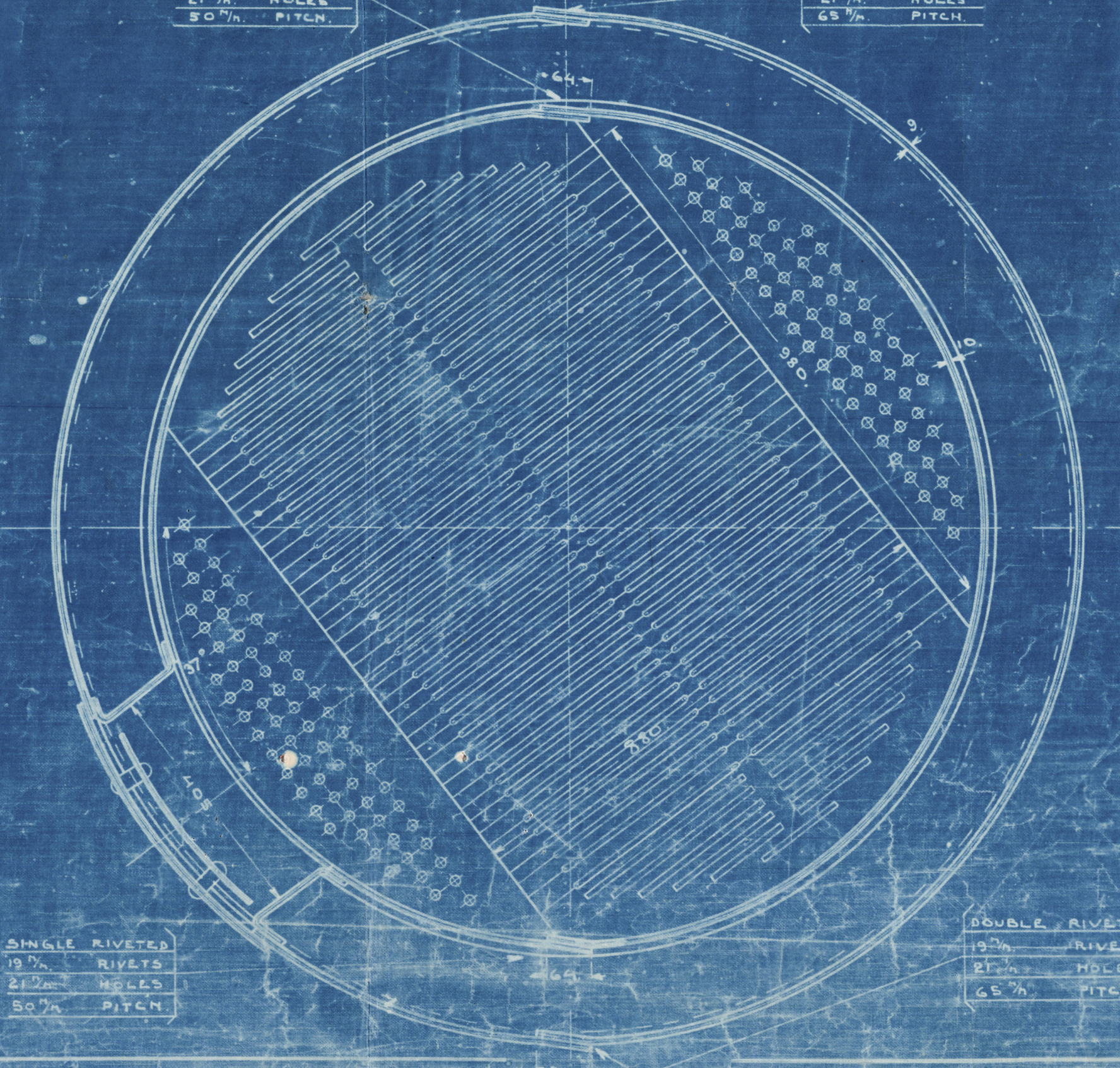
DOUBLE RIVETED
19mm RIVETS
21mm HOLES
65mm PITCH



	METRES ²	FEET ²
HEATING SURFACE IN 95 TUBES	16,35	175,9
" " TUBES, ENDS AND SIDES	4,81	51,8
" " FIREBOX	1,67	17,95
" " SMOKESTACK	0,07	0,75
TOTAL HEATING SURFACE	22,9	246,4
GRATE SURFACE	1,165	12,56
HEATING SURFACE GRATE SURFACE = 19,4		

	TENSILE BREAKING STRENGTH TONS	ELONGATION IN 8 INCH AT LEAST %
OUTSIDE SHELL PLATES	28-32	22-20
PLATES, FLANGED OR EXPOSED TO FLAME	26-28	24-21
BARS FOR STAYS	26-30	24-20
" " RIVETS	26-28	27-25

	ATM.	LBS. PER SQ. INCH
WORKING PRESSURE	6,33	90
HYDRAULIC TEST	12,66	180



SINGLE RIVETED
19mm RIVETS
21mm HOLES
50mm PITCH

DOUBLE RIVETED
19mm RIVETS
21mm HOLES
65mm PITCH

24/10/23

HÄRTILL PLÅTSKISS SERIEN P. 1247
" ELDSTÄDSPLÅTAR (UTSLAG) P. 1274
" LUCKBESLAG SERIEN P. 518

DONKEY N°	TILL	ARBETS NUMMER	HELSINGBORG	VARPS	A.B.
63.	3/5 * 36				
66	" " 37				
73	" " 38				
75	" " 39				
76	" " 40				
	" " 42				
DONKEYBOILER					
HEATING SURFACE 22,9					
TO BE CLASSED BUREAU VERITAS					
RITAD	AV		SKALA	I.R.	
KALKERAD	AV		DATUM	31-8-14	
GRANSKAD	AV				

Maluõ

Donkey boiler for A.B. Karlshamn
Skeppsvärk's m/s No. 12
~~to be~~ built by Helsingborgs Värp-
& Lötningö A.B., Helsingborg.

m/s. "Epoca"

Maluõ F. C. report No. 620

RETAIN



© 2021

Lloyd's Register
W1210-0068
Foundation