

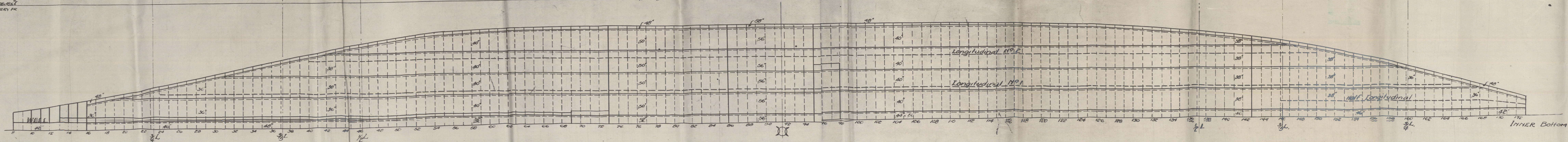
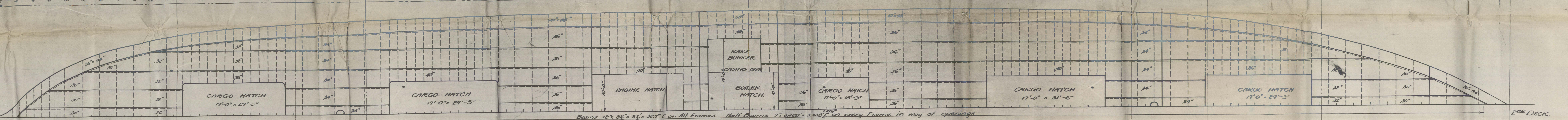
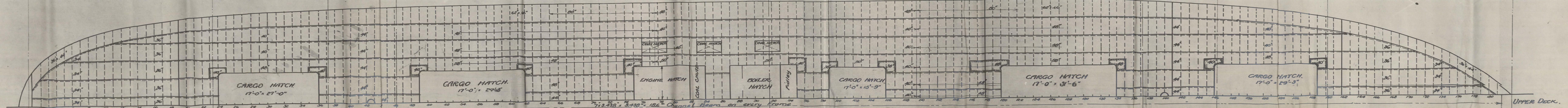
Copy, hand-drawn  
3/15/28

Sketch of Battery  
arrangement to be submitted  
to the Bureau  
for approval  
Sketch of Battery  
arrangement to be submitted  
to the Bureau  
for approval

Stringer No. 2  
Stringer No. 1

Floors 38"  
Floors 36"  
Floors 34"  
Floors 32"  
Floors 30"  
Floors 28"  
Floors 26"  
Floors 24"  
Floors 22"  
Floors 20"  
Floors 18"  
Floors 16"  
Floors 14"  
Floors 12"  
Floors 10"  
Floors 8"  
Floors 6"  
Floors 4"  
Floors 2"

no manholes in floors at heels  
of wide spaced stringers  
rivets doubled in way of double bottom



*Lester* 7 *2/27/68*  
*Coleman* 9 *1/14/68*  
*Wright* 10  
1 *10/6*

FILED IN 156

PROFILE 4<sup>TH</sup> DECK PLAINS  
LLOYD'S.

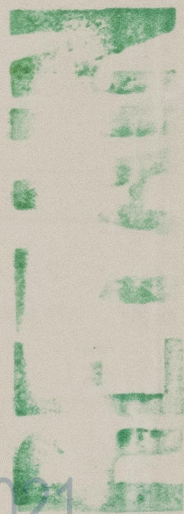
156



Rec'd from Kober  
Antonio Zupcorich

Rec'd 28/9/28

Ed



© 2021

Lloyd's Register  
Foundation

W1209-0253