

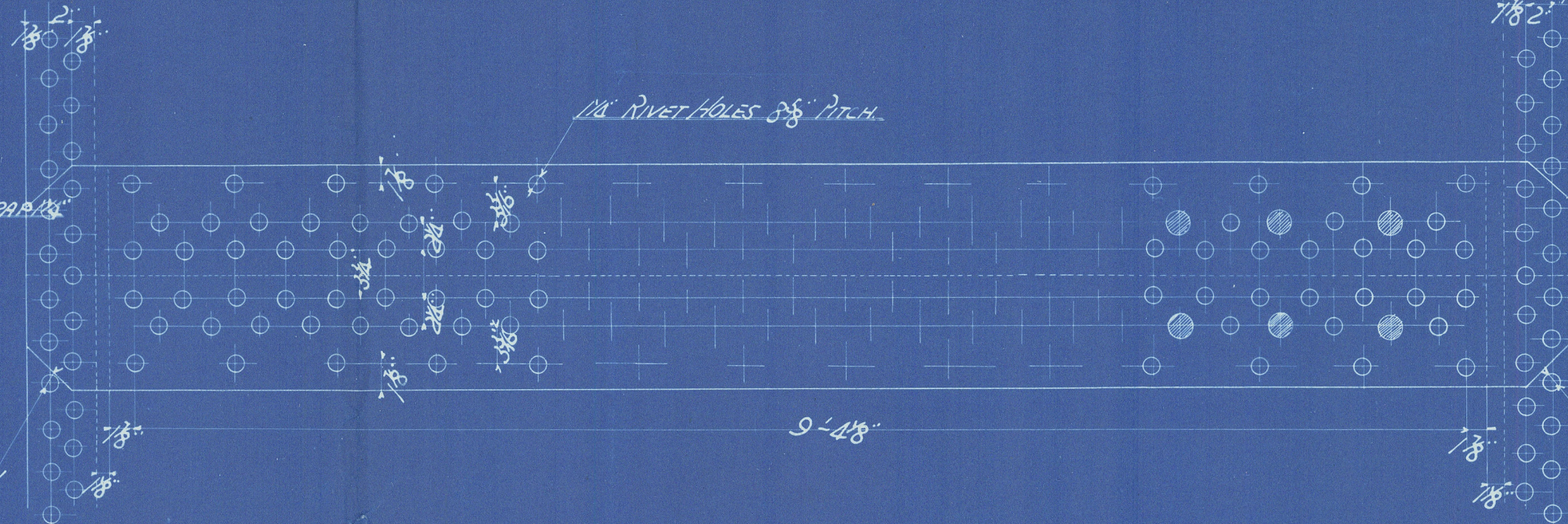
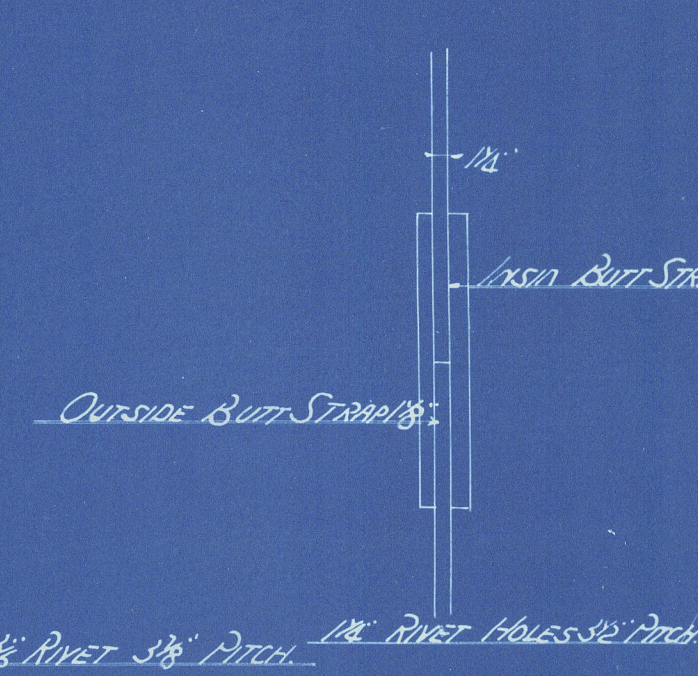
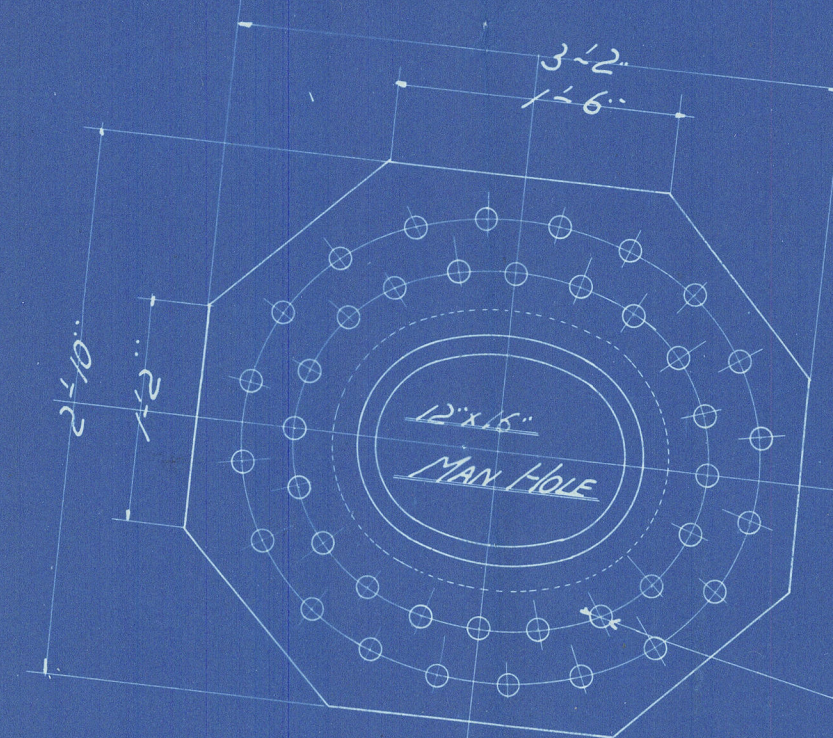
STEEL BOILER FOR NO 924

SCALE 1 IN TO ONE FT.

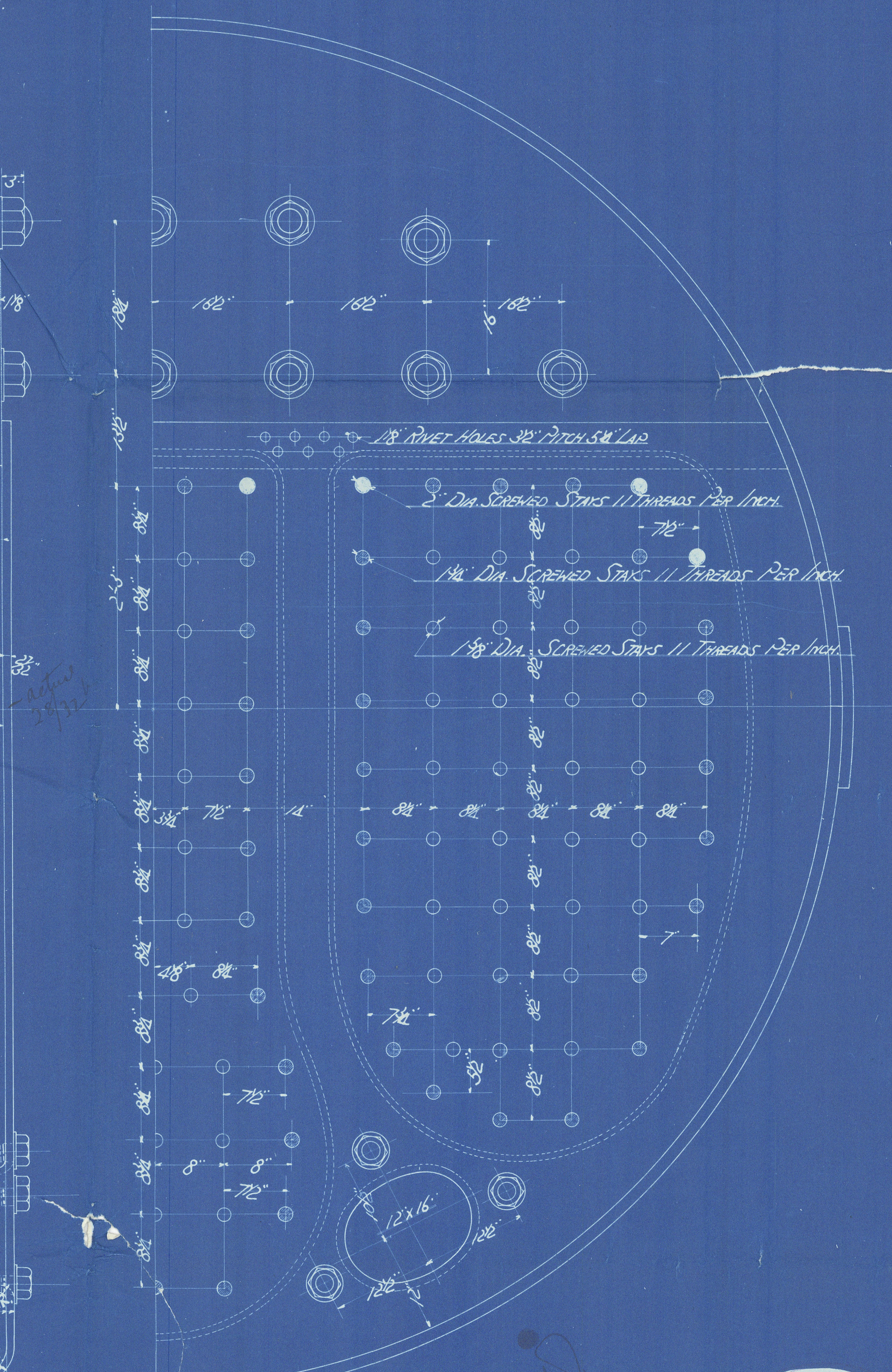
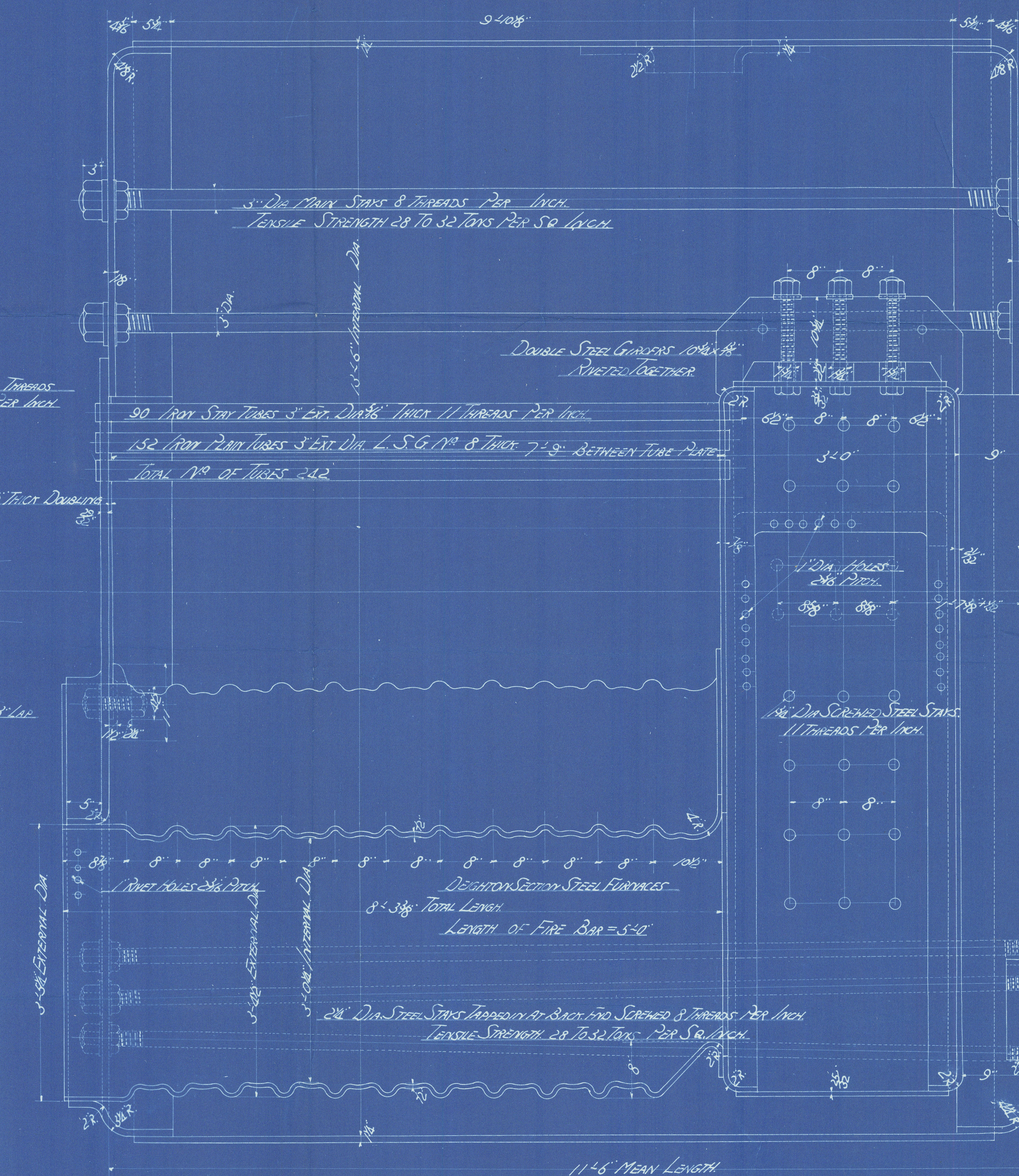
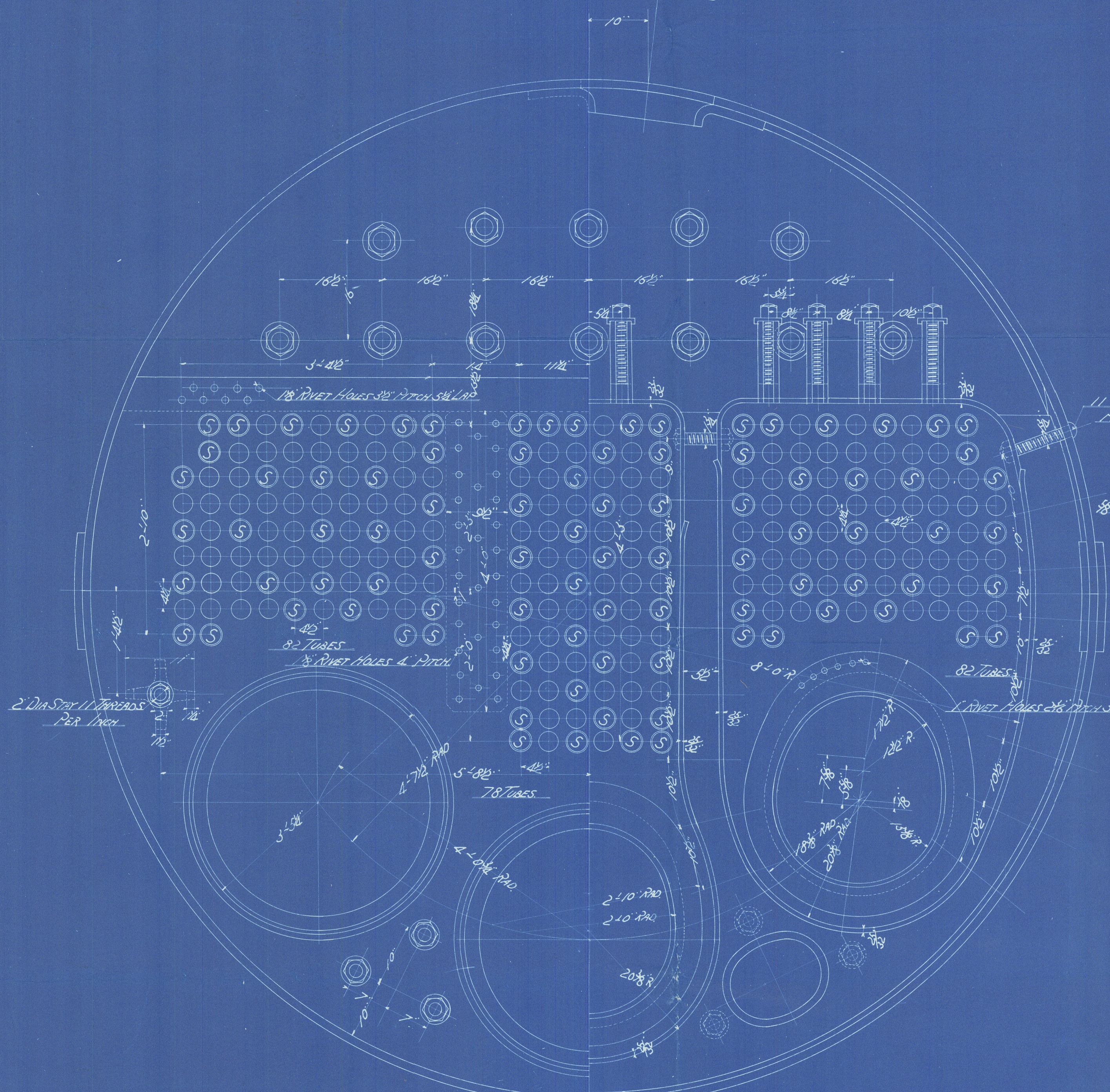
W.P. = 150 LBS/IN²

TENSILE STRENGTH OF SHELL PLATES
TO BE NOT LESS THAN 28 TONS/IN²

PARTICULARS (FOR ONE BOILER)	
HEATING SURFACE OF TUBES	173.50 sq ft
COMB. C.	226.8 sq ft
FURNACES	126.6 sq ft
TOTAL HEATING SURFACE	186.6 sq ft
TOTAL GRATE AREA	45.3 sq ft
H ₂ O	40.3



TWO OFF { ONE THUS ONE OPPOSITE } FOR ONE VESSEL



W1208-0239

Refugee Mern No 2

O. I. W. 924 S/S

Boilers.

10th Rpt No 2187



RECEIVED



© 2021

Lloyd's Register
Foundation