

17/12/01  
12-01-01  
12-01-01

2 1/2" x 3/4" 3' 11 5/8"

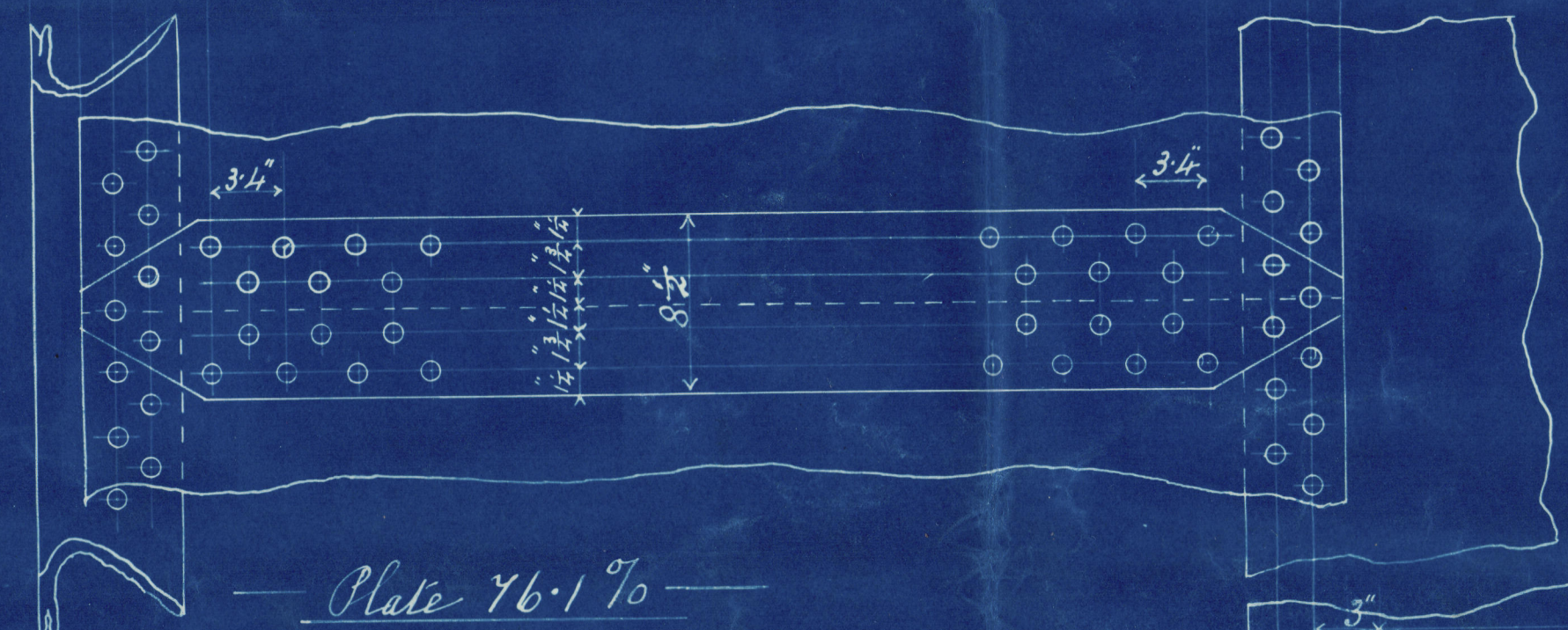
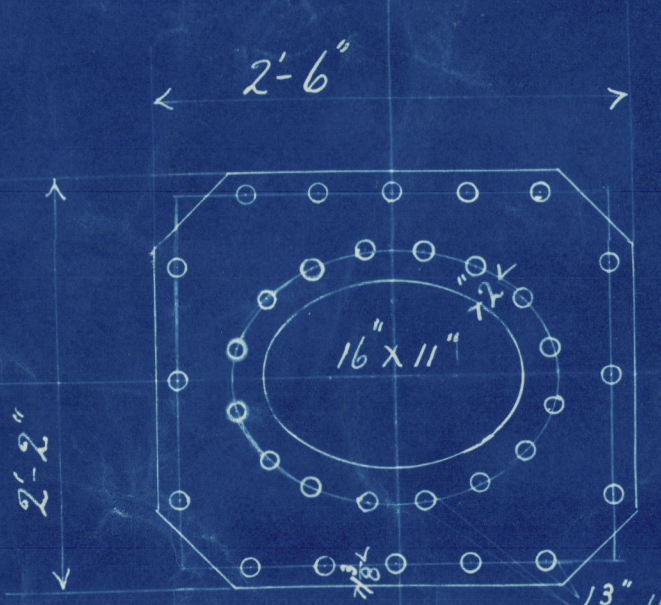
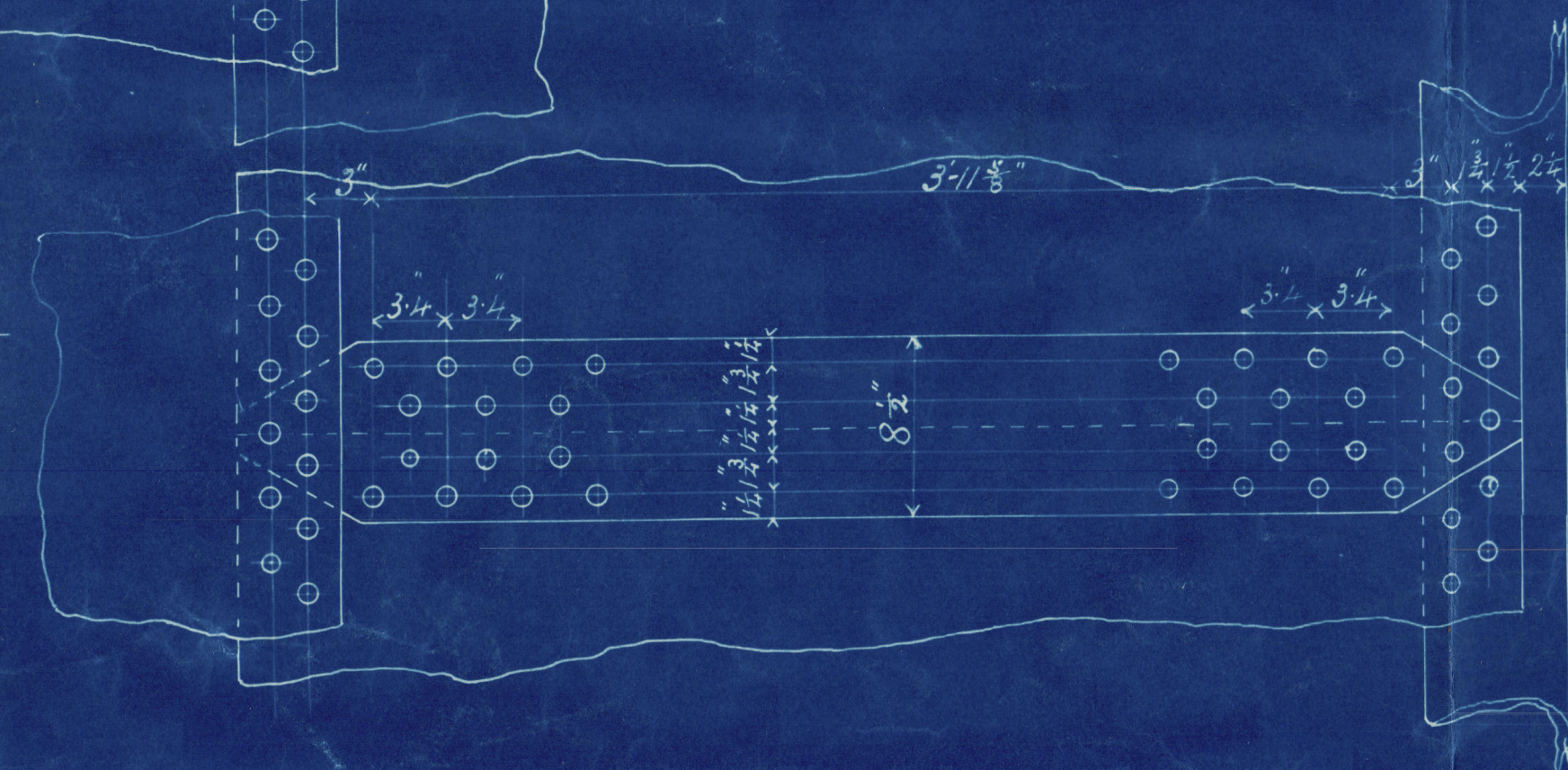
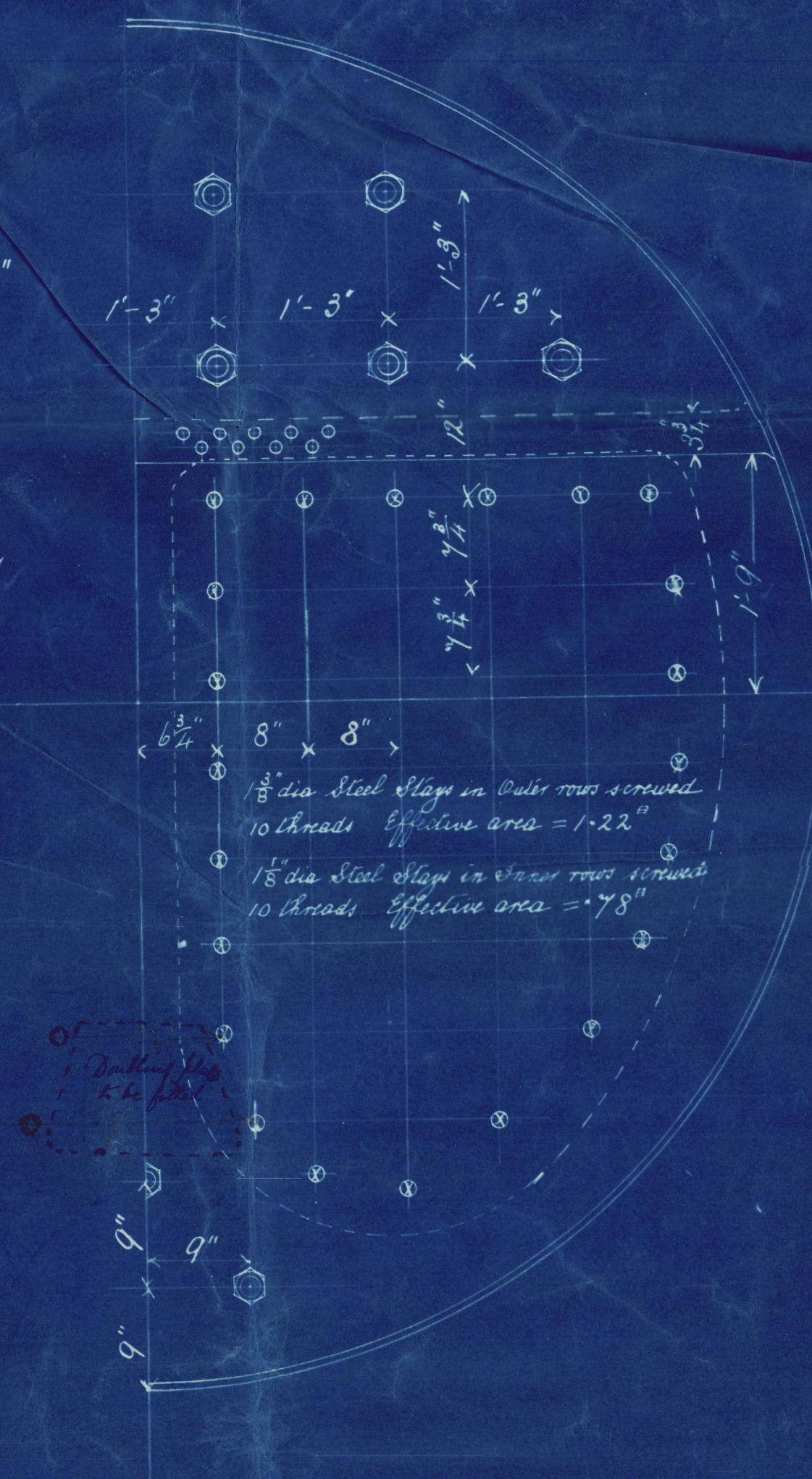
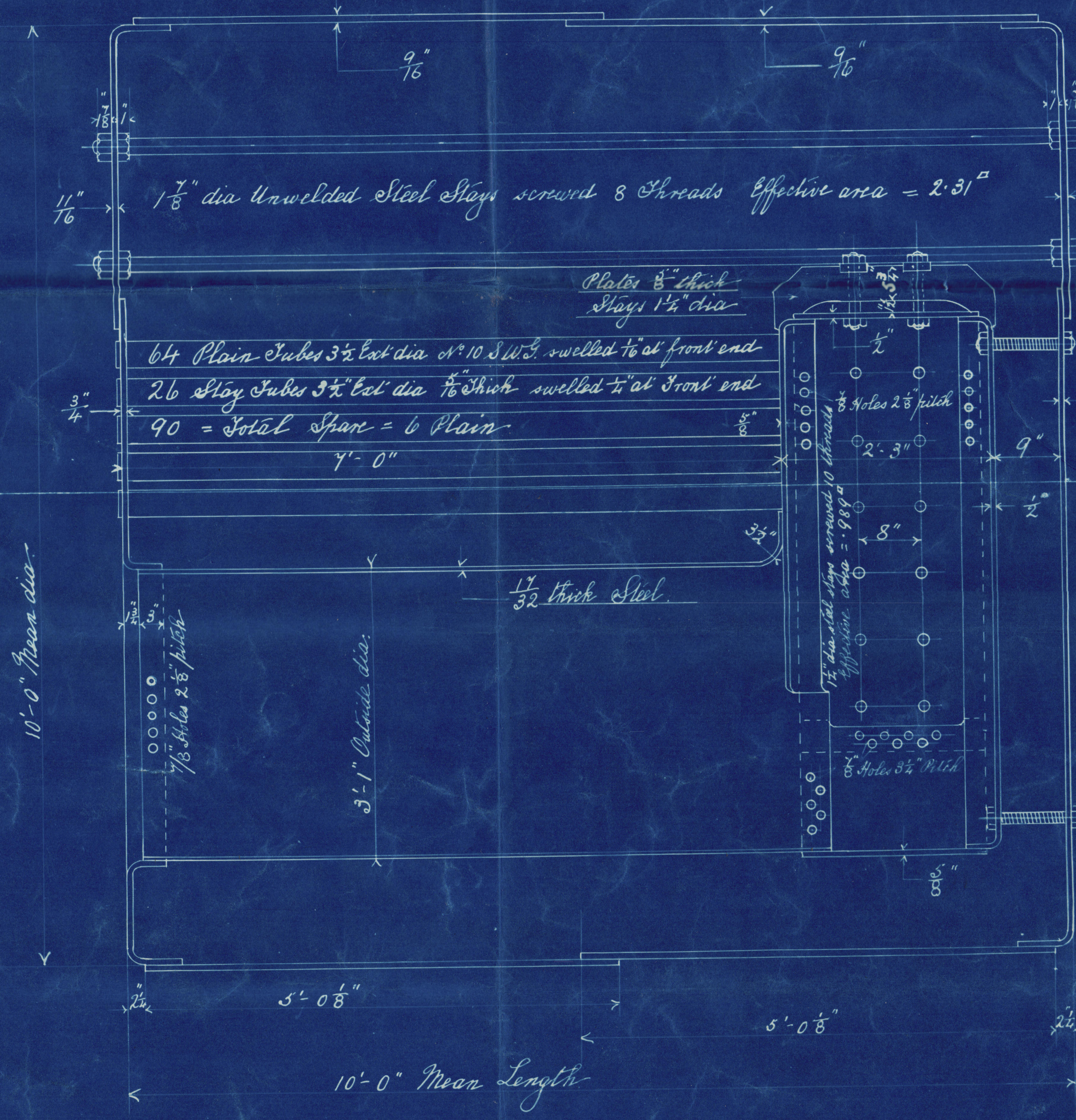


Plate 76.1%  
Rivet 80.6%

Shell Plates 7/16" thick - Butt Straps Inside 7/16" Outside 7/8" thick  
13/16" Holes 3/4" Pitch in Longitudinal Seams  
1" Holes 3/4" Pitch in Circumferential Seams



13/16" Holes 9/16" doubling



- all Material Steel except Tubes - all Holes drilled in place
- Minimum Tensile strength of Shell Plates and Butt Straps = 27 tons
- To pass Lloyds Survey for 90 lbs Working Pressure

| Heating Surface |        |
|-----------------|--------|
| Tubes           | 577    |
| C. Chambers     | 104    |
| Surfaces        | 68     |
|                 | 749 sq |

Grate Surface 5' 6" Bors = 33 sq

**DONKEY BOILER**  
**ENG<sup>E</sup> N<sup>O</sup> 348**

SCALE 1" = 1 FOOT

6/9/01

3081

|            |  |
|------------|--|
| Drawn      |  |
| Traced     |  |
| Checked    |  |
| Engineered |  |



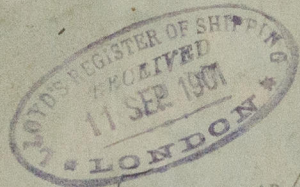
*From*  
The CLYDE SHIPBUILDING AND ENGINEERING CO., Ltd.,  
For ENCLOSURE to

*Messrs Lloyd's Lawrenson  
Greenock*

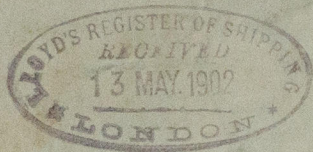
2/2



The Clyde S B & Co Lim.  
Donkey Boilers for  
Wm Hamilton & Co's  
S.S. No 167.



Sept 17/3/02  
S.S. Koorunga  
Gen report No 13364



W1203-052



© 2020

Lloyd's Register  
Foundation