

12:12:05

# STEEL BOILER N<sup>o</sup> A 92

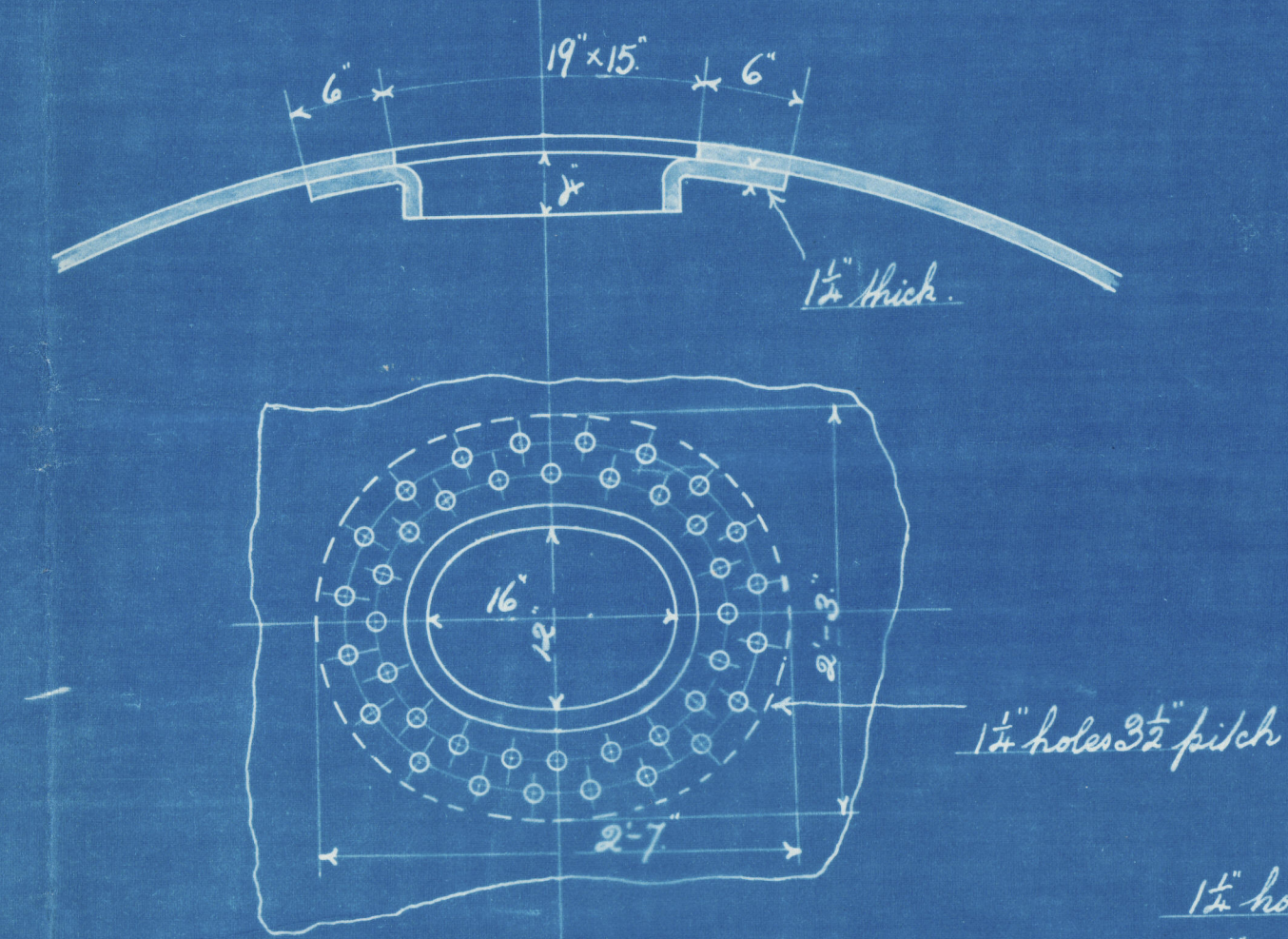
Working Pressure 175 Lbs.  
(Board of Trade & Lloyds.)

Scale: 1 inch = 1 foot.

## Note:-

All plates, stays & rivets to be of Siemens Martin Steel. The shell plates & butt straps are not to be less than 28 tons per sq inch tensile strength. All rivet holes to be drilled in place after the plates are bent. All flanged plates to be annealed after the plates are flanged. The screw stays are 1 1/2" x 1 3/8" effective diam. screwed 10 threads per inch, all screwed through both plates & nutted at each end. The tubes are of iron, the ordinary tubes are 2 1/2" ext. diam. x 11/16" L.S. thick, the stay tubes are 1 3/8" inside diam. x 1/8" effective thickness at bottom of threads. A manhole in shell 16" x 12" with shorter axis longitudinally and a doubling plate 3" x 2' 6" x 1 1/8" thick fitted round it.

M. Neil's flanged compensating ring 1 1/2" thick fitted with M. Neil's manhole door 16" x 12".



Plan of shell riveting.  
1 1/8" holes, 8" pitch.  
Plate = 85.15 %  
Rivets = 88.3 % Board of Trade.  
= 91.46 % Lloyds.

## DIMENSIONS

LENGTH OF FIRE BARS	2 1/2'
AREA OF FIRE GRATE	8' 1"
DIAM OF TUBES OUTSIDE	2 1/2"
LENGTH OF TUBES over plates	28' 6"
N <sup>o</sup> OF TUBES	69
AREA THROUGH TUBES	14.85 sq ft
SURFACE OF TUBES	1735 sq ft
TOTAL HEATING SURFACE	175 Lbs
WORKING PRESSURE	175 Lbs

Approved by Messrs. Gresham 25-11-05  
Lloyds 25-11-05

Shell 1 1/8" thick.  
inside butt straps = 1 1/8" thick  
outside " = 5/8"  
Tensile strength not less than 28 tons per square inch.

Outside nuts 3 3/4" deep.

3" steel stay 2 1/2" effective diam at bottom of threads  
7 threads per inch.

Outside nuts 1 1/2" deep.

Outside nuts 3 3/4" deep.

Double steel bars 7/8" x 5/8" riveted together.

All 1 1/2" steel screw stays except those shown in section which are 1 3/8" diam all screwed 10 threads per inch.

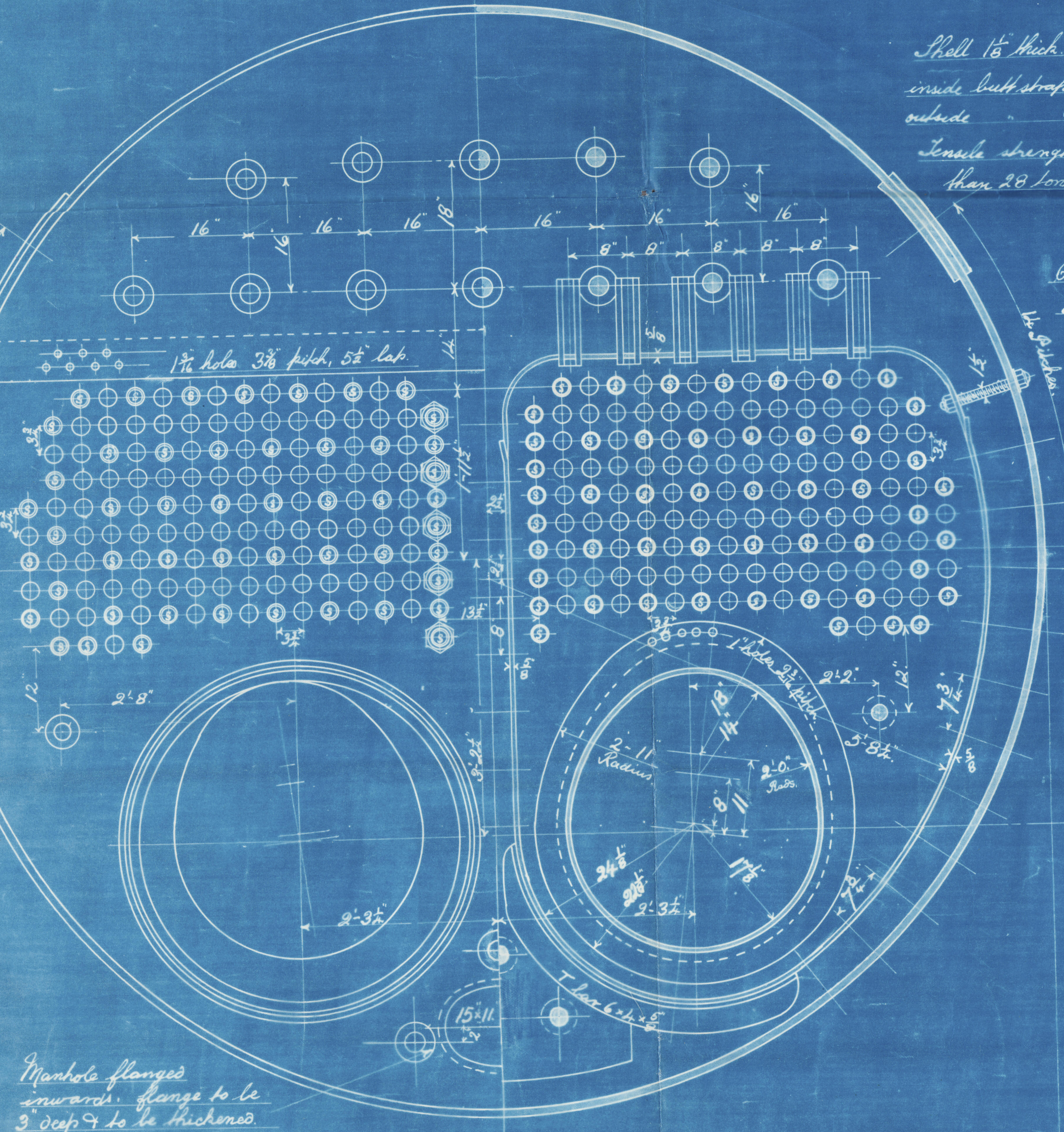
Inside doubling plate 1/2" thick riveted on with 1 1/8" holes.

Diagonal's patent furnaces.

8' 6 1/2" Total length.

Steel stays 2 1/2" diam in body 2 1/2" effective diam screwed 7 threads per inch tapped in at both ends.

11' 4" Mean length.



Manhole flanges inward. Flange to be 3" deep & to be thickened.

12' 9" Ext. diam.

5882  
11/12/05



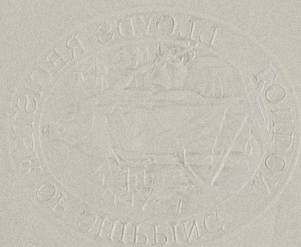
LLOYDS

N<sup>o</sup> A 92

Lloyd's Register Foundation



RECEIVED



- Amended -

Lloyd's

15<sup>th</sup> / 12 / 05

Earle's Co. Ltd.

- A 92 Boiler -

175 tbs

for:

The Montrose

Shipbuilding Co. No 32



s/s 'Bau Hong Liong'

Hull Report No. 184 27



© 2019

W 262-0266  
Lloyd's Register  
Foundation