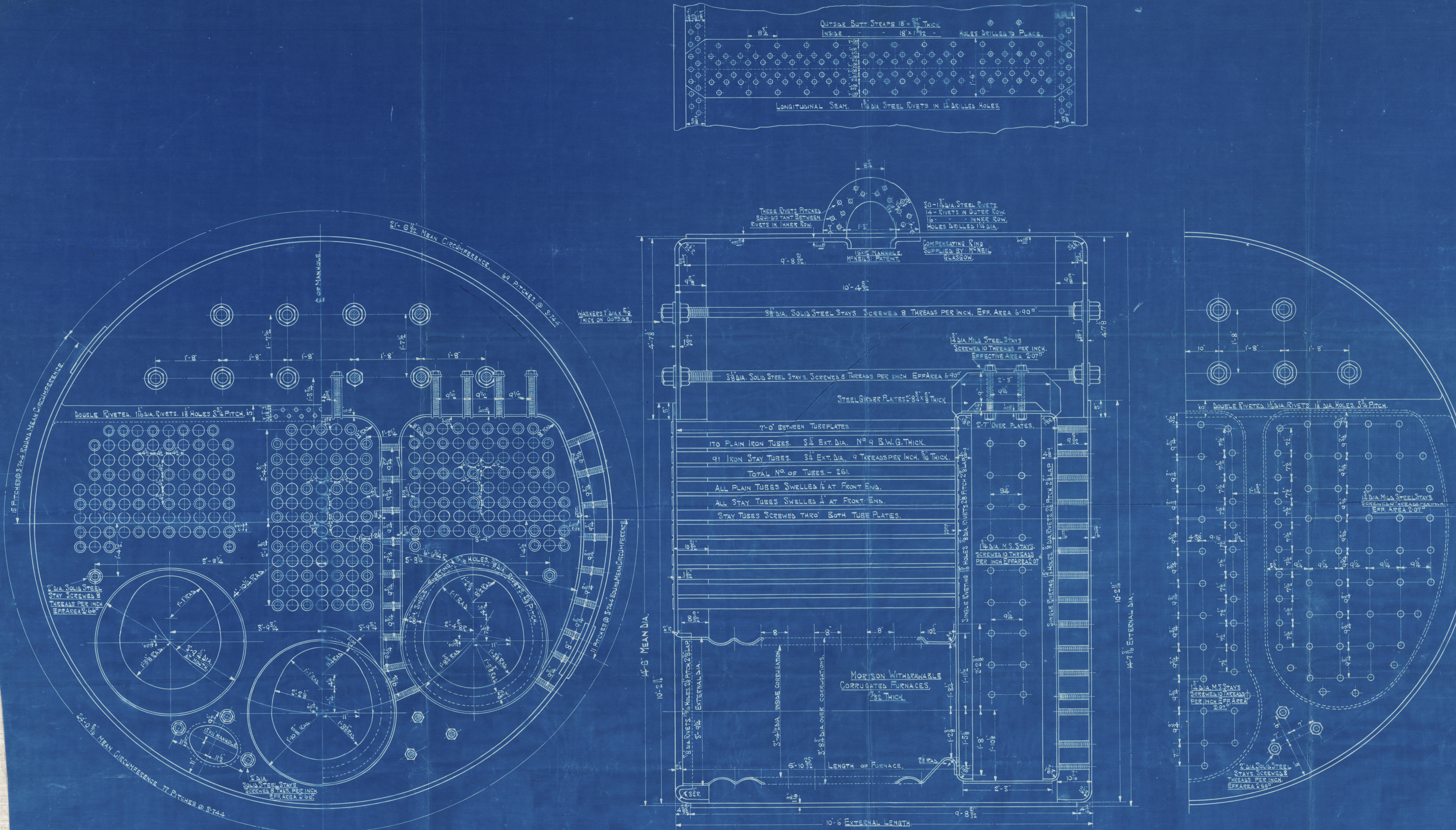


23/12/20

HEATING SURFACE.	
HEATING SURFACE IN TUBES	1552 sq. ft.
" " " BACK TUBE PLATE	44 "
" " " C.C. BACK	78 "
" " " WRAPPER PLATES	129 "
" " " FURNACES	130 "
" " " ONE BOILER	1933 sq. ft.
GRATE SURFACE.	55.7 sq. ft.
RATIO OF HEATING SURFACE TO GRATE SURFACE	34.7:1.
LENGTH OF FIREBARS (IN TWO LENGTHS)	5'-6".

PLATE SECTION.	$8.75 - 1.25 \times 100 = 875$	85.7%
RIVET SECTION	$5 \times 1.2272 \times 1.75 \times .95 = 9.75 \times 1.1875$	87.9%
SHELL PLATE.	$22(9-2) \times 85.7 = 174$	184 LBS.
UPPER END PLATES.	$185 \times 19.5 = 3607.5$	180.3 LBS.
UPPER END PLATE STAYS.	$6.9 \times 10400 = 71760$	184.8 LBS.
OUTER TUBE PLATE.	$140 \times 16.5 = 2310$	187.6 LBS.
STAY TUBES.	$(757-54) \times 7500 = 9^2 - (4 \times 8.29) = 185 \times 11^2$	337 LBS.
MARGINAL TUBES	$(757-54) \times 7500 = 1142599 - (3 \times 8.29) = 185 \times 11^2$	208 LBS.
C.C. TOPS	$125 \times 11^2 = 15125$	186 LBS.
C.C. GIRDERS	$125 \times 11^2 = 15125$	181.2 LBS.
C.C. BACKS	$135 \times 11^2 = 16335$	181.2 LBS.
C.C. STAYS ORDINARY	$207 \times 9000 = 1863000$	206.2 LBS.
C.C. STAYS MARGINAL	$207 \times 9000 = 1863000$	216 LBS.
C.C. THRO. GIRDERS	$207 \times 9000 = 1863000$	212 LBS.
C.C. GIRDERS	$10460 \times 9^2 \times 1.25 = (29.656 - 9.25) \times 9.5 \times 29.656$	187.8 LBS.
FURNACES	$1254 \times (8.5 - 2) = 44.75$	183 LBS.
INNER TUBE PLATE	$140 \times 16.5 = 2310$	190.5 LBS.
BACK PLATE AT BOTTOM	$175 \times 18^2 = 1/2(14^2 + 11.875) = 135 \times 18^2$	180 LBS.
BACK PLATE	$135 \times 18^2 = 1/2(18.75^2 + 7.5^2) = 2.66 \times 10400 = 9 \times 14$	181 LBS.
BACK STAY		221 LBS.

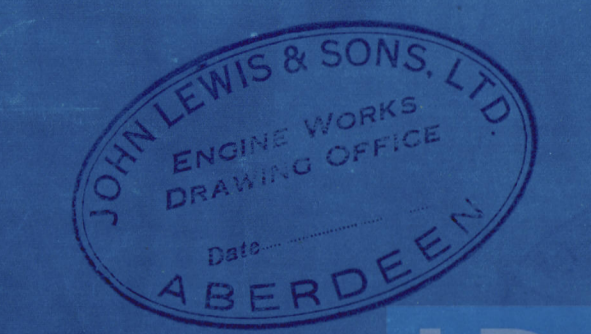
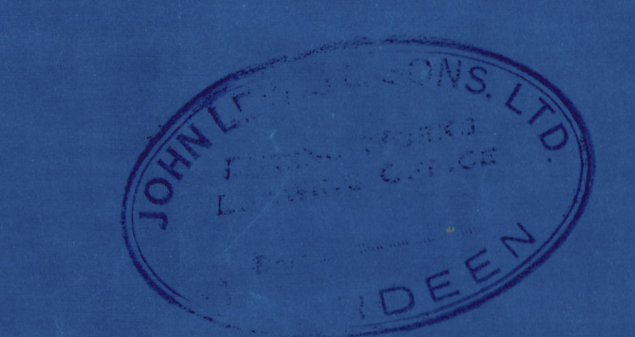
23/12/20
A.P.S.



MARINE BOILER 14'-6" MEAN DIA. X 10'-6" EXT. LENGTH. BOILER N° 133 A

TO PASS LLOYD'S SURVEY.

WORKING PRESSURE = 180 LBS./SQ. INCH. SCALE 1" = ONE FOOT. TEST PRESSURE = 360 LBS./SQ. INCH.



M 91





© 2019

Lloyd's Register
Foundation

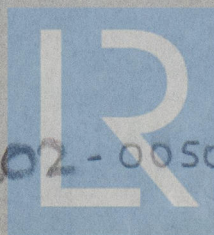
John Lewis & Sons Ltd.

Boiler No. 133A.

S.S. "Annagher".

Aln Ford Entry Rept No 13390.

RETAIN



© 2019

W1202-0050

Lloyd's Register
Foundation