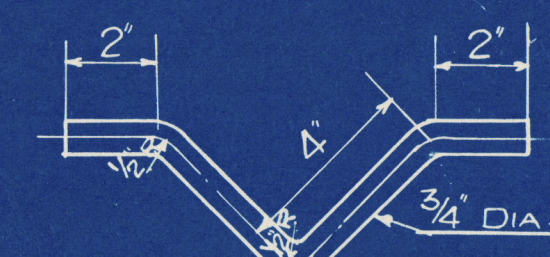


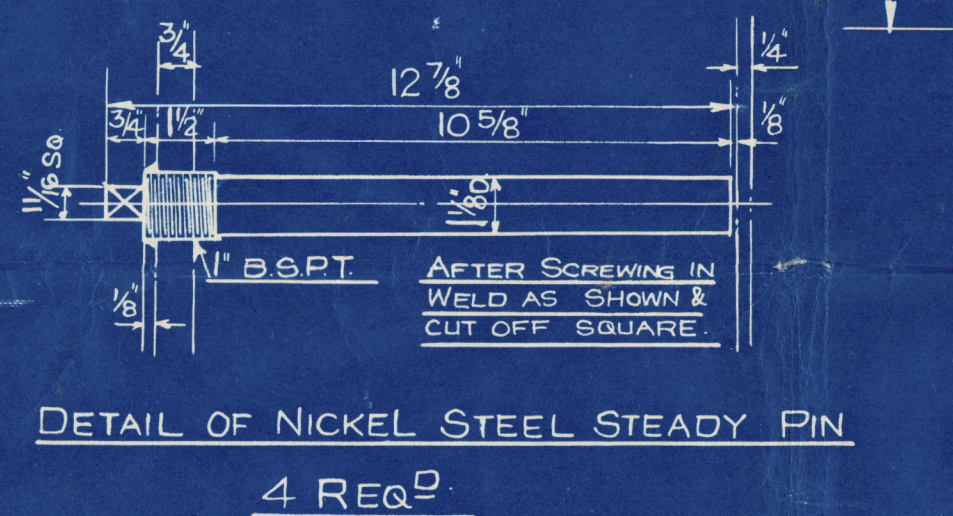
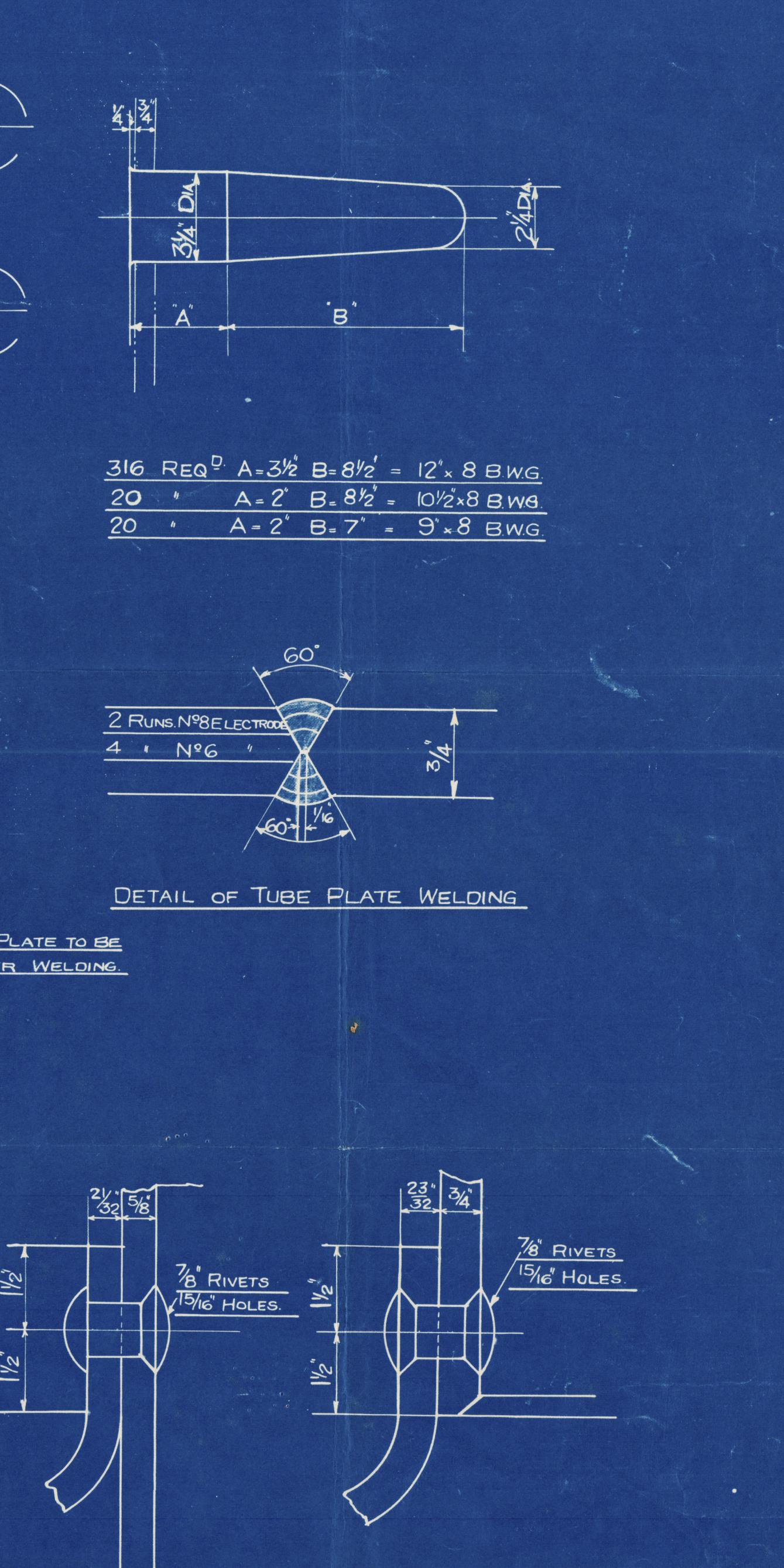
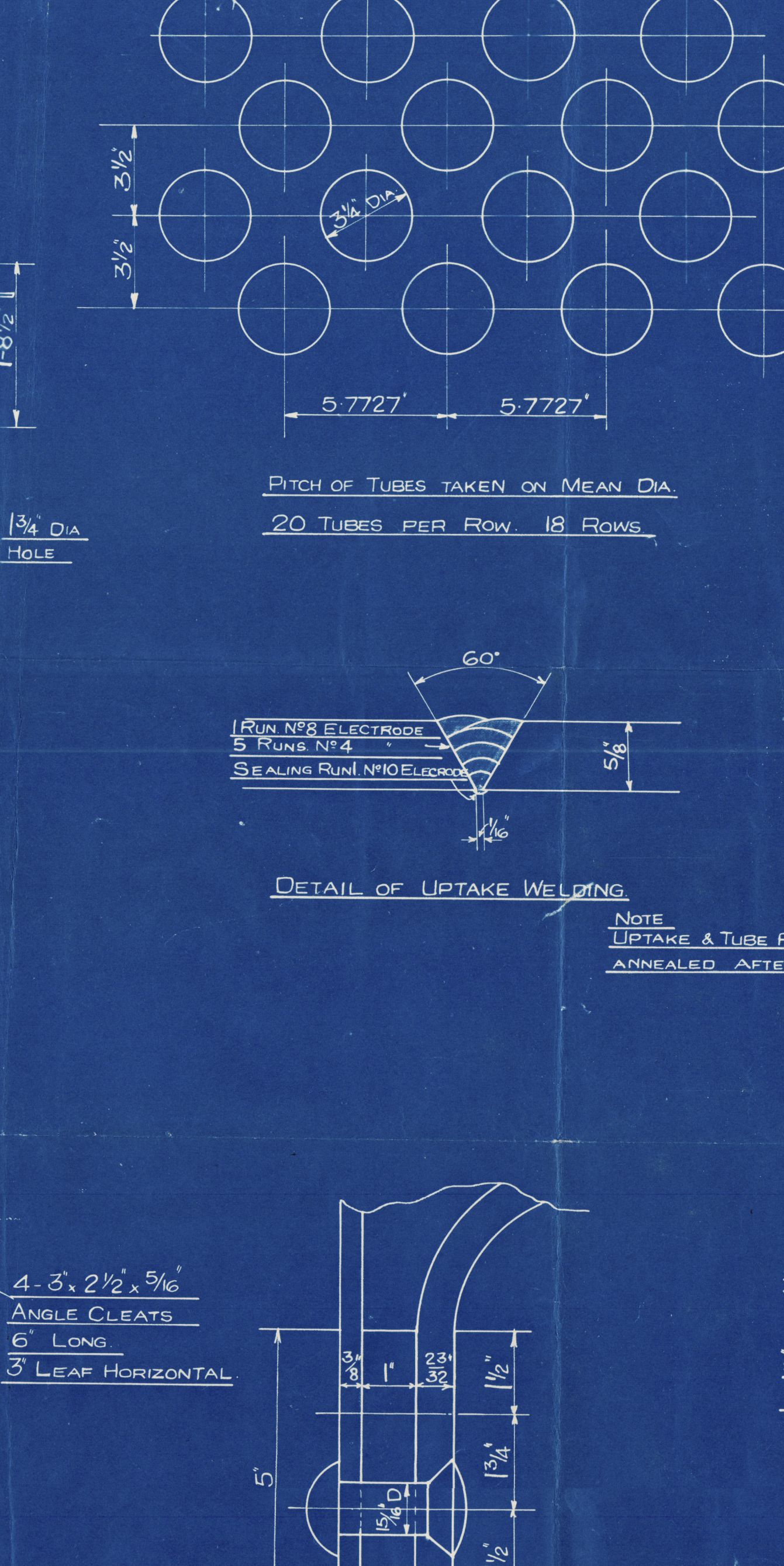
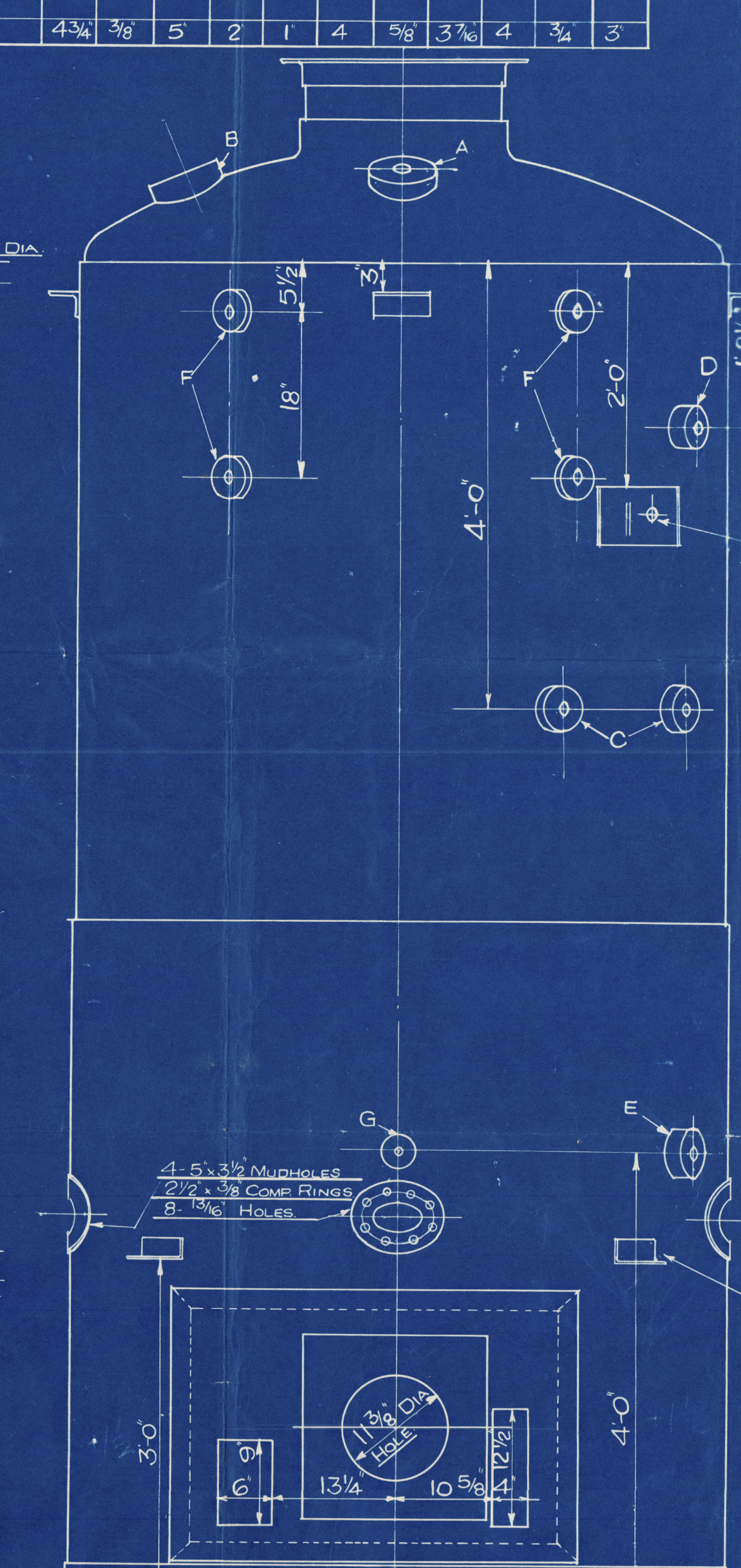
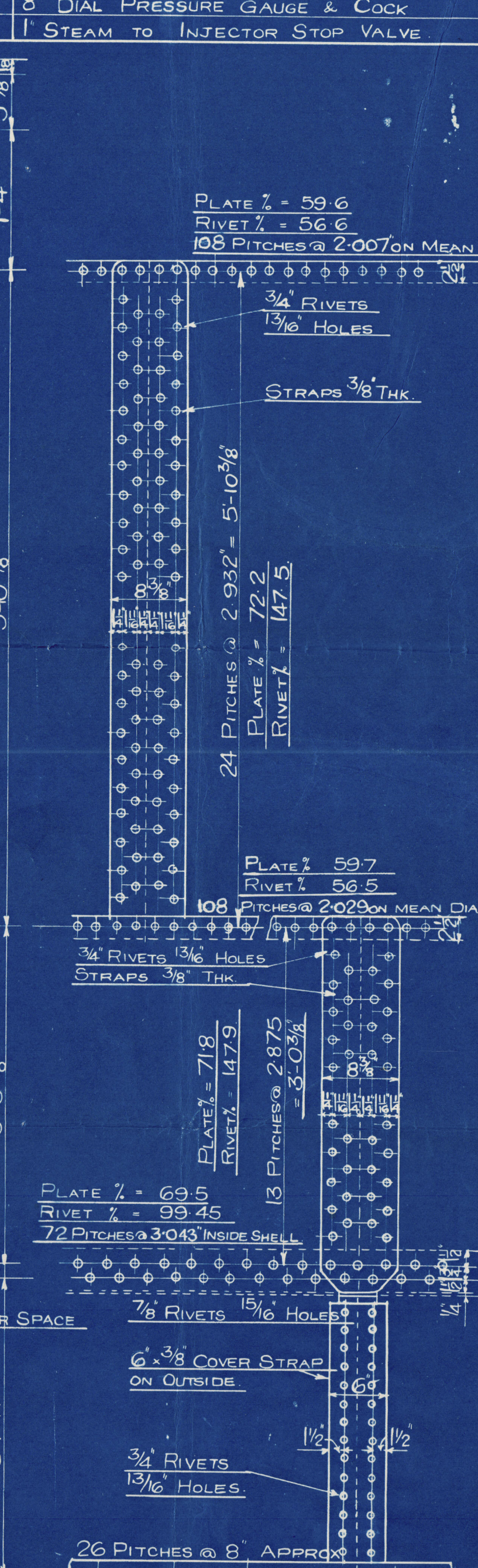
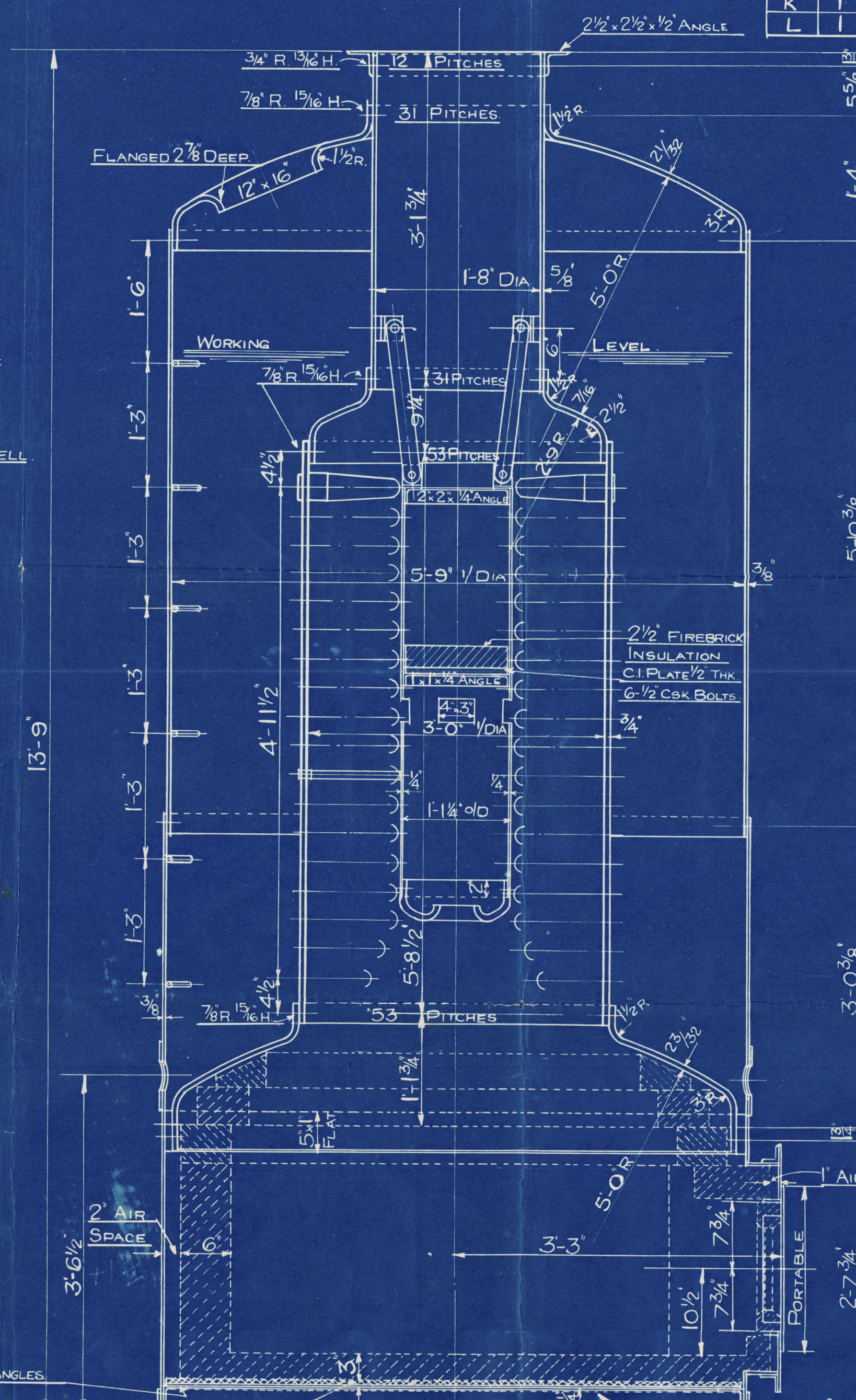
SPECIFICATION OF MATERIALS

SHELL & BUTT STRAPS 28-32 TONS
OTHER PLATES & RIVETS 26-30 TONS

| Fig | Nº | DESCRIPTION | FLANGE | PAD | STUDS | RIVETS |
|-----|--------|---------------------------------|------------|----------|-------------|-------------|
| Nº | OFF | | DIA THK | DIA THK | Nº | DIA PCD |
| A | 1 | 1 1/2 D.S. SAFETY VALVE | 7 1/4 1" | 7 1/2 2" | 8 5/8 5 3/4 | 8 3/4 5" |
| B | 1 | 2 1/4 STEAM STOP VALVE | 7 1/4 3/4 | 7 1/2 2" | 8 5/8 5 3/4 | 8 3/4 4 1/8 |
| C | 2 | 1" FEED CHECK VALVES | 4 3/4 9/16 | 5 2" | 4 5/8 3 1/4 | 4 3/4 3" |
| D | 1 | 1" SCUM VALVE | 4 3/4 3/8 | 5 2" | 4 5/8 3 1/4 | 4 3/4 3" |
| E | 1 | 1 1/4 BLOW DOWN VALVE | 5 1/4 1/2 | 5 1/2 2" | 4 5/8 3 1/4 | 4 3/4 3 3/8 |
| F | 2 SETS | 3/4" WATER GAUGES & PROTECTORS | 4 1/2 1/4 | 4 1/4 2" | 4 5/8 3 1/4 | 4 3/4 2 3/4 |
| G | 1 | 3/8" SALINOMETER COCK | 3 3/4 7/16 | 4 2 1/2 | 4 1/2 2 5/8 | 4 3/4 2 5/8 |
| H | 1 | 3/8" AIR COCK | 3 3/4 7/16 | 4 2 1/2 | 4 1/2 2 5/8 | 4 3/4 2 5/8 |
| J | 1 | 3/8" PRESSURE GAUGE COCK | 3 3/4 7/16 | 4 2 1/2 | 4 1/2 2 5/8 | 4 3/4 2 5/8 |
| K | 1 | 3" DIAL PRESSURE GAUGE & COCK | 4 3/4 3/8 | 5 2" | 4 5/8 3 1/4 | 4 3/4 3" |
| L | 1 | 1" STEAM TO INJECTOR STOP VALVE | 4 3/4 3/8 | 5 2" | 4 5/8 3 1/4 | 4 3/4 3" |

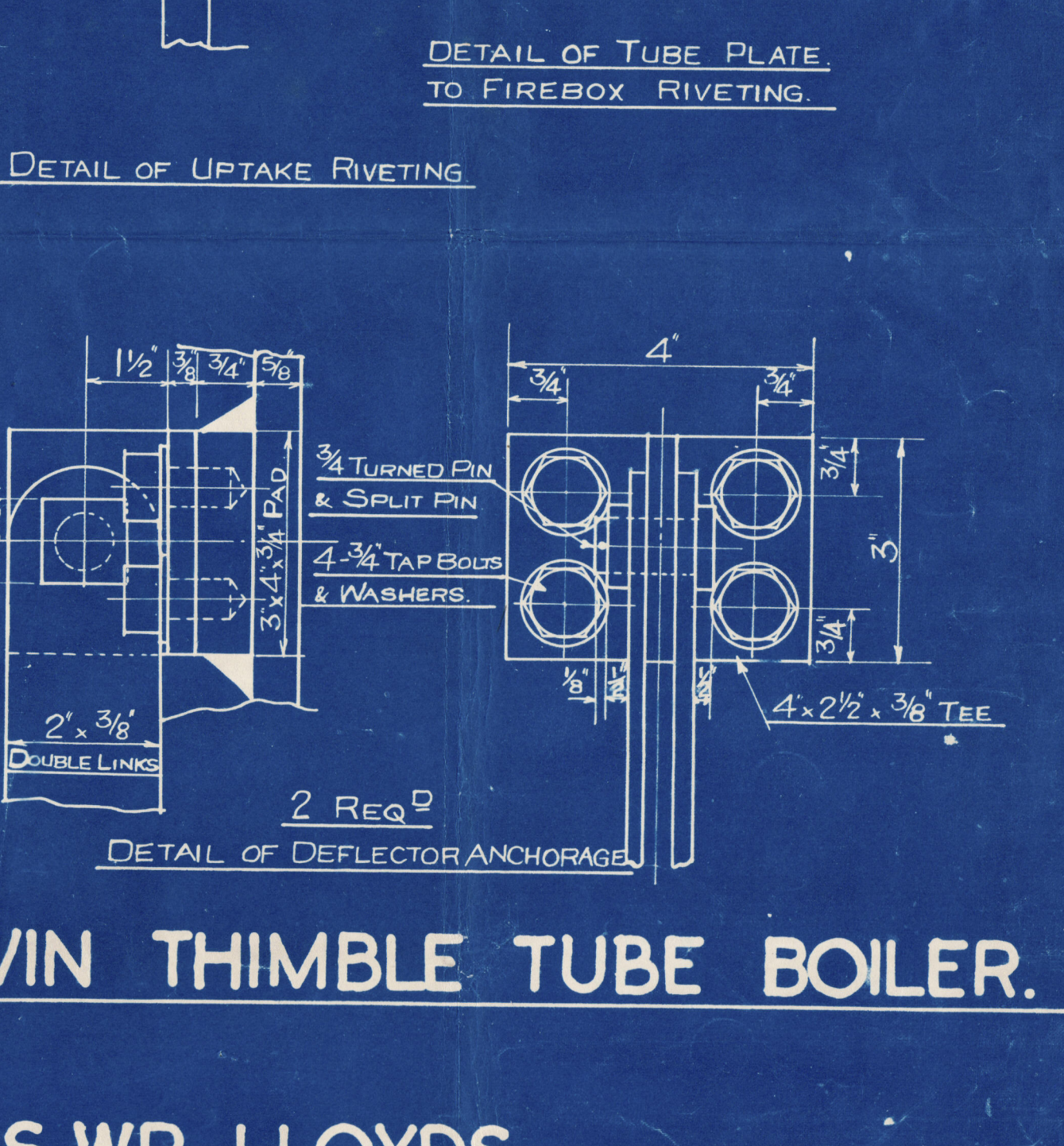
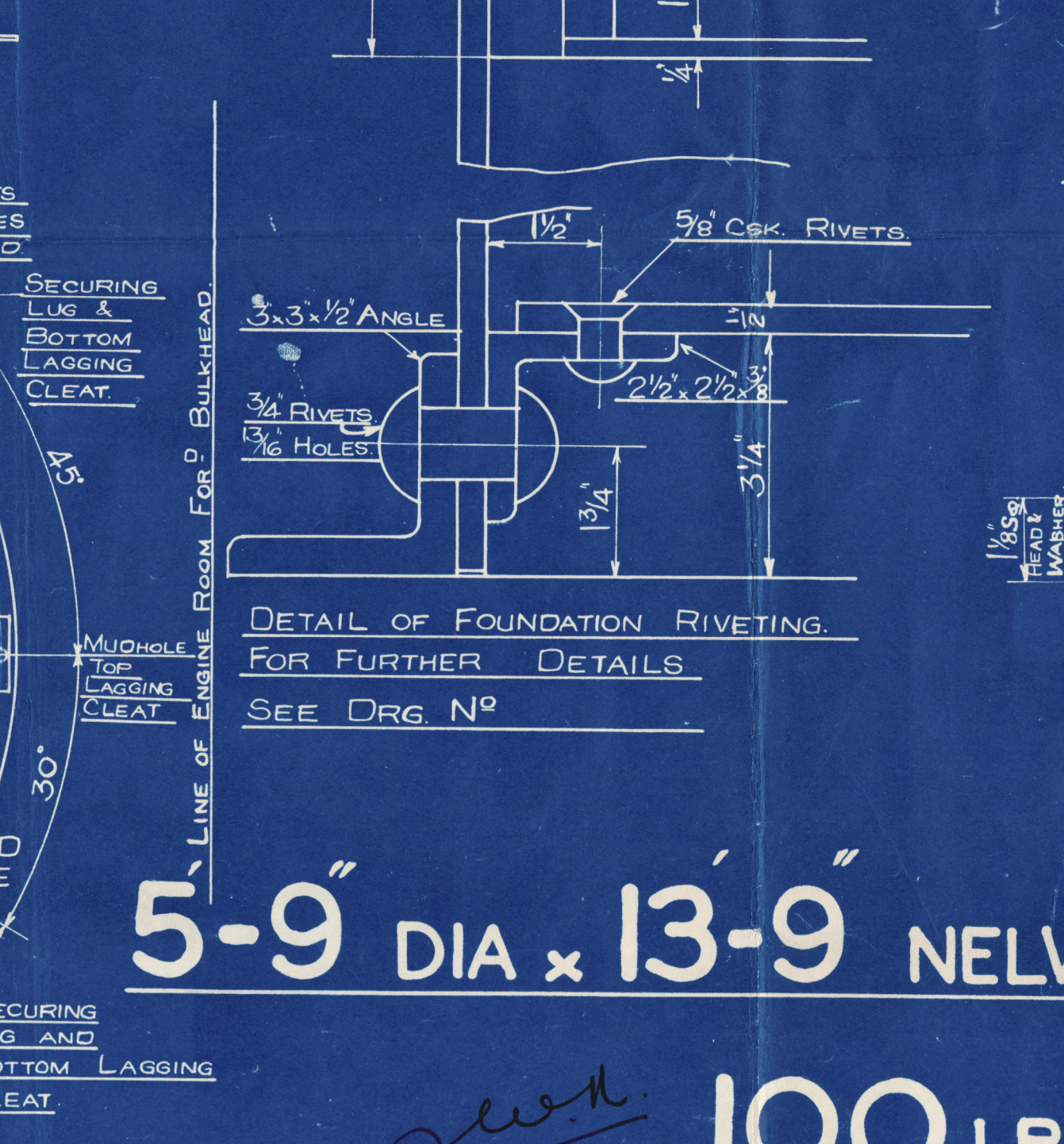
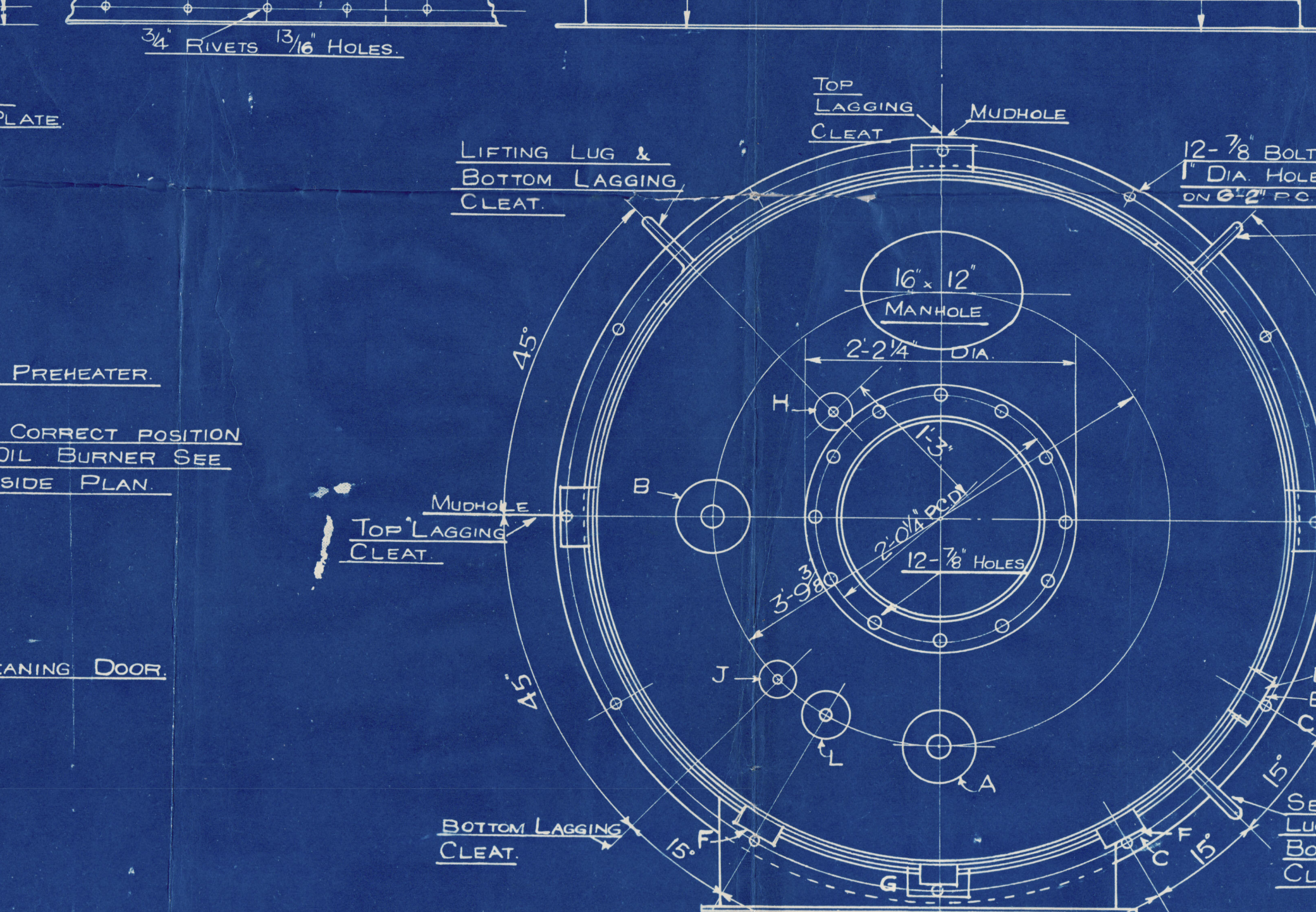
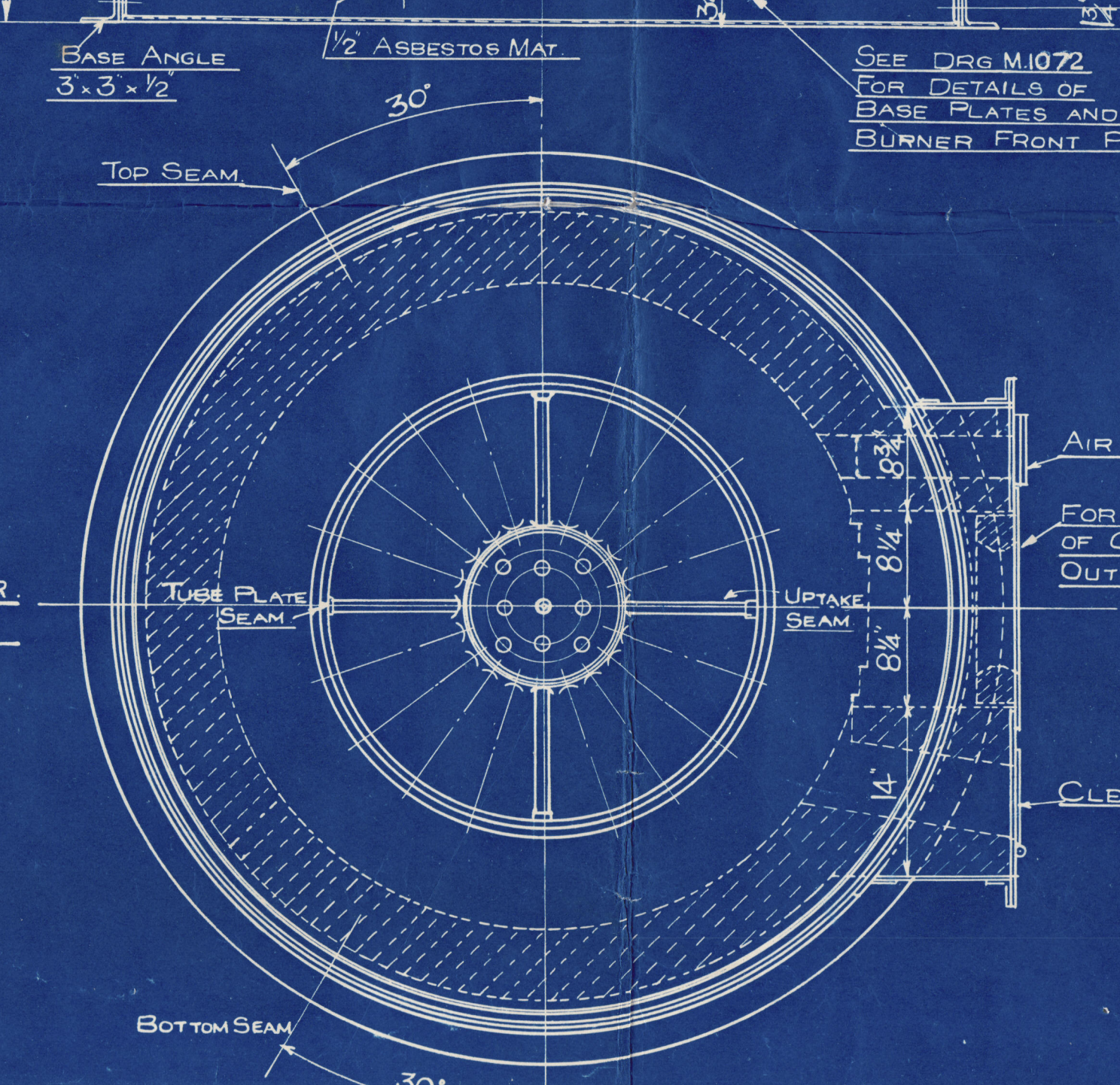


DETAIL OF STEPS
6 STEPS WELDED INSIDE SHELL
ALTERNATELY 6" EACH SIDE
OF MANHOLE



DETAIL OF NICKEL STEEL STEADY PIN
4 REQ'D

HEATING SURFACE = 258 SQ. FT.
EVAPORATION - NORMAL 800-1000 LBS. HR.
" MAXIMUM 2000 "



5'-9" DIA x 13'-9" NELVIN THIMBLE TUBE BOILER.

100 LBS. WP. LLOYDS.

DRG. No. 709.

MESSRS. HARLAND & WOLFFS JOB N^o 1025-6-7-8
OUR BOILER N^o 6410-11-12-13

SCALE - 1/32" = 1 FOOT
6410-13
DRAWN BY: V.K.
DATE: 2.8.39
TRACED BY: G.D.
DATE: 12.9.39

W1201-0216

AMENDED PLAN

Messrs. Stockton Chemical Engineers

Riley Bailers Ltd.

7/8 "PALMA"

Bailers Nos. 6410-13

APPROVED

F.E. Bel. 12953.

~~S.S.~~ Bailer No. 6410

~~MDB. RPT. No.~~ 16870

~~S.S.~~ Bailer No. 6411

~~MDB. RPT. No.~~ 16806

~~S.S.~~ Bailer No. 6412

~~MDB. RPT. No.~~ 16830

~~S.S.~~ Bailer No. 6413. "Palma"
~~MDB. RPT. No.~~ 16857

RETAIN



© 2019

Lloyd's Register
Foundation