

Nos 576
575-6. M.V. "NOTTINGHAM"

MIDSHIP SECTION.

MID DIMENSIONS 450-0 x 60-0 x 39-5 TO UPPER DECK.
29-8 " 2ND

TO CLASS 100 A1 WITH FREEBOARD CORRESPONDING TO THE
DRAFT CONTEMPLATED BY THE RULES FOR A COMPLETE SUPERSTRUCTURE
VESSEL WITH TONNAGE OPENING TONNAGE OPENING CLOSED.

SCALE: 1/2" = ONE FOOT

ALEXANDER STEPHEN & SONS, LTD.
SHIPBUILDERS & ENGINEERS
CLASCOG
8-11-11

LLOYD'S NUMERALS.	
L x D	= 450' x 37.67' = 16951
L x (B + D)	= 450' x (60' + 37.67') = 43951
L/D TO SHELTER DECK	= 450' / 37.67' = 11.42
"d" FOR NO 2 & 3 HOLDS AFT OF 1/2 L	19.67' - 3.75' + 15.92' + 1.08' = 17.00' (FOR REDUCED WING BKT.)
"d" IN ENG. ROOM	29.67' - (10.5') + 14.67' = 14.25' CORRECTED FOR HEIGHT OF WING BRACKET
"d" IN 4 & 5 HOLDS	19.67' - 3.75' + 15.92' + 1.08' = 17.00' (FOR REDUCED WING BKT.)
"D" FOR FRAMING	= 37.67'

EQUIPMENT.	
L x (B + D)	= 450.0' x (60' + 39.42') = 44739.
FORECASTLE	= 34.0' x 9.5' x .75 = 166.
HAUSE	= 96.0' x 8.0' x .5 = 384.
"	= 112.0' x 8.0' x .5 = 448.
45737.	

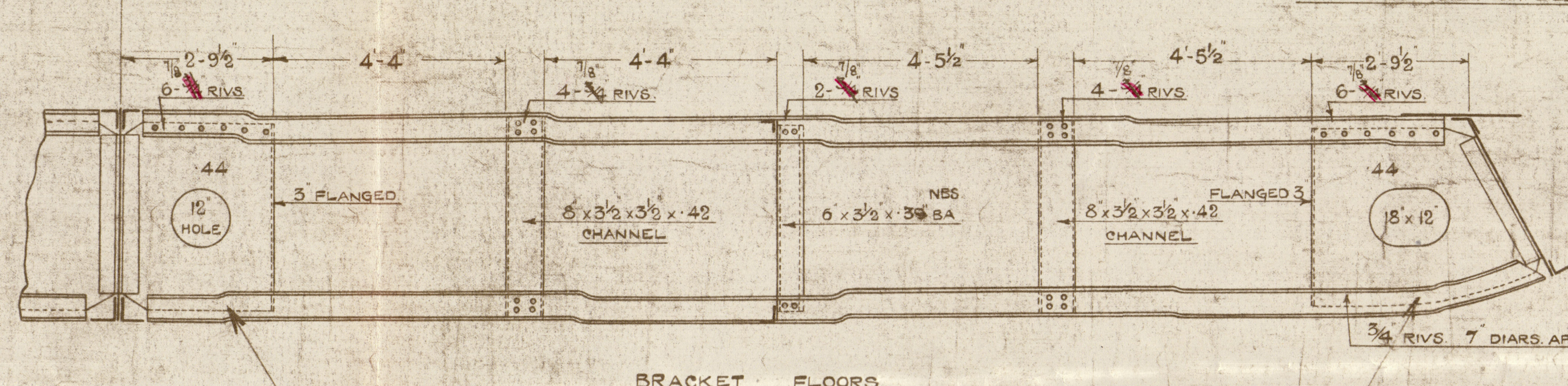
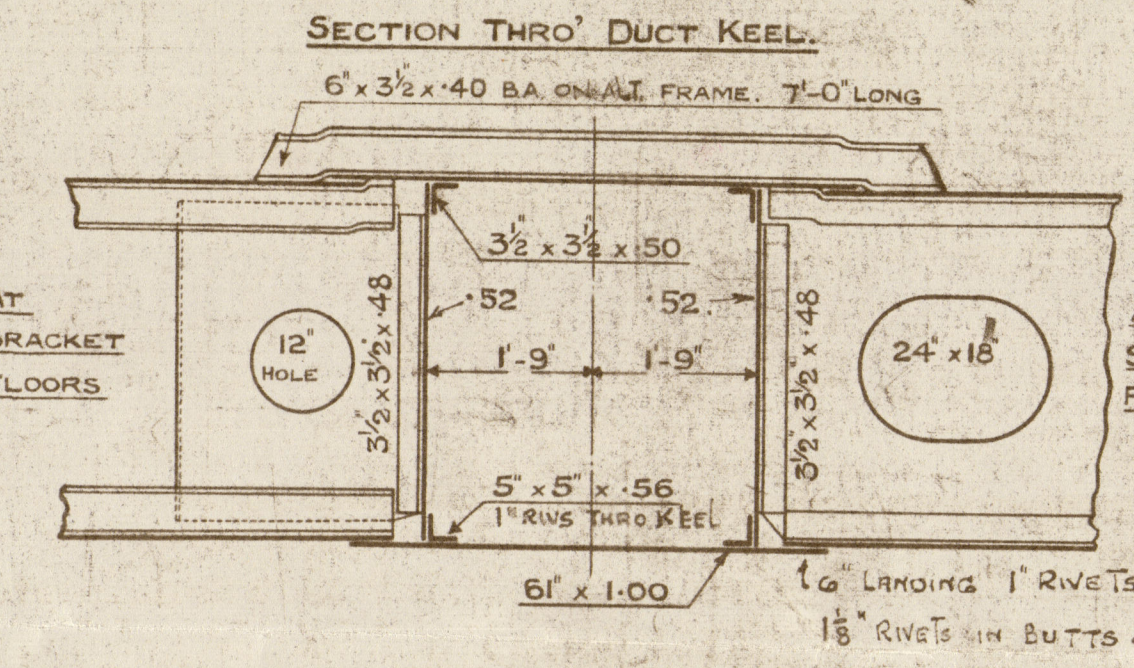
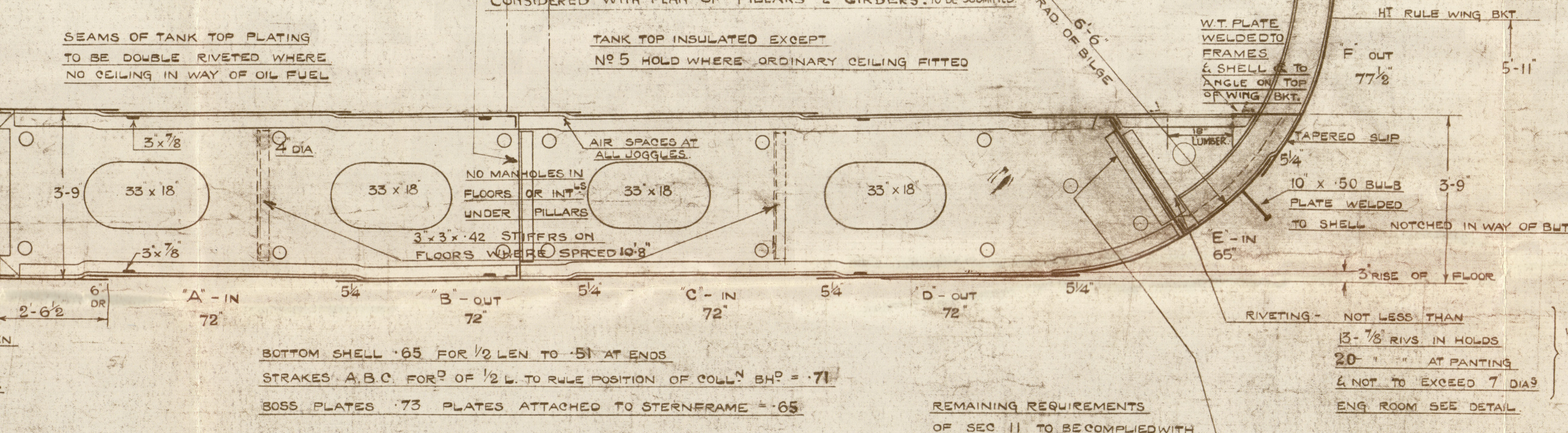
EQUIPMENT.	
2 BOWER ANCHORS EACH	77 CWT'S STOCKLESS
1 STREAM	22 " EX STOCK
300 FMS 2 1/2" STUD LINK CHAIN CABLE OR 2 1/2" TAYCO	
120 " 1 1/2" STREAM CHAIN OR 5" STEEL WIRE (5/16")	
130 " 5/8" STEEL WIRE (5/16") TOWLINE	
2 AT 100 FMS 8" HEMP OR 2 1/2" STEEL WIRE (5/16") HAWSERS	
2 AT 100 " 8" " " 2 1/2" " " WARPS	

STEM 10' x 2 1/2"
STERNPOST & RUDDER PLAN WILL BE SUBMITTED.

DOUBLE BOTTOM		1/2 LEN.	ENDS	ENGINE SPACE	REMARKS
CENTRE GIRDER		45' x .56	.48	60' x .56	
" TOP ANGLE		3 1/2" x 3 1/2" x .50	3 1/2" x 3 1/2" x .46	3 1/2" x 3 1/2" x .50	DOUBLE
" BOTTOM ANGLE		5' x 5' x .56	5' x 5' x .52	5' x 5' x .56	DOUBLE
FLOORS SOLID (UNLESS OTHERWISE STATED)		.44	.44	.44	SOLID ON EVERY FRAME IN ENG. SPACE
INTERMEDIATE BKT. FLOORS		.44	.44	.44	UNDER BMD'S, THRUST SEATING & FOR 75 L
WING BRACKETS		.44	.44	.44	ANGLE ON UPPER EDGE 5' x 5' x .44
W.T. FLOORS		.52	.52	.52	WELDED & INCREASED SCANTLING IF OVERFLOW EXCEEDS 3" ABOVE TANK TOP
STIFFENERS ON W.T. FLOORS		5' x 3 1/2" x .48	5' x 3 1/2" x .48	5' x 3 1/2" x .48	5' x 3 1/2" x .48 FOR 5' L TO RULE POSITION OF COLL. BKT.
FRAMES ON SOLID FLOORS		3 1/2" x 3 1/2" x .48	3 1/2" x 3 1/2" x .48	3 1/2" x 3 1/2" x .48	N.B. BULK ANGLE
" W.T. "		3 1/2" x 3 1/2" x .48	3 1/2" x 3 1/2" x .48	3 1/2" x 3 1/2" x .48	DOUBLE IN ENG. SPACE & UNDER THRUST SEATING
" BKT. "		5' x 5' x .56	5' x 5' x .52	5' x 5' x .56	N.B. BULK ANGLE
REV. FRAMES ON SOLID FLOORS		3 1/2" x 3 1/2" x .48	3 1/2" x 3 1/2" x .48	3 1/2" x 3 1/2" x .48	DOUBLE IN ENG. SPACE & UNDER THRUST SEATING
REV. FRAMES ON BKT. FLOORS		5' x 5' x .56	5' x 5' x .52	5' x 5' x .56	N.B. BULK ANGLE
INTER. PLATES		.40	.40	.44	DOUBLE IN ENG. SPACE
" TOP ANGLE		3 1/2" x 3 1/2" x .48	3 1/2" x 3 1/2" x .48	3 1/2" x 3 1/2" x .48	DOUBLE IN ENG. SPACE
" BOTTOM ANGLE		3 1/2" x 3 1/2" x .48	3 1/2" x 3 1/2" x .48	3 1/2" x 3 1/2" x .48	DOUBLE IN ENG. SPACE
VERT. ANGLE ON CH. GIRDER		3 1/2" x 3 1/2" x .48	3 1/2" x 3 1/2" x .48	3 1/2" x 3 1/2" x .48	5' x 5' x .48 AT PAINTING
" MARGIN INSIDE		5' x 5' x .48	5' x 5' x .48	5' x 5' x .48	WITH 3 1/2" x 1/2" BACK GIR. SEE DETAIL
" OUTSIDE		5' x 5' x .48	5' x 5' x .48	5' x 5' x .48	5' x 5' x .48 UNDER ENGINE SEATING
" INTER. SOLID		3' x 3' x .42	3' x 3' x .42	3' x 3' x .42	N.B. BULK ANGLE
" OPEN		5' x 5' x .39	5' x 5' x .39	5' x 5' x .39	1 1/2" PLATE UNDER ENGINE, CEILING IN HOLD
TANK TOP CH. STRAKE		3' x 3' x .42	3' x 3' x .42	3' x 3' x .42	REDUCED 15" AFT OF 3 1/2" LEN.
PLATING		.46	.46	.46	REDUCED 15" AFT OF 3 1/2" LEN.
MARGIN PLATE		3' x 3' x .42	3' x 3' x .42	3' x 3' x .42	5' x 5' IN WAY OF OIL
" ANGLE		3 1/2" x 3 1/2" x .48	3 1/2" x 3 1/2" x .48	3 1/2" x 3 1/2" x .48	5' x 5' IN WAY OF OIL
GUSSETS		.46	.46	.46	CONTINUOUS PLATE

SIDE FRAMING		APT. PEAK	IN WAY OF TUNNEL FLAT	NOS 4 & 5 HOLDS	ENG. ROOM & SIDE OIL TANKS	DEEP OIL TANK	NOS 2 & 3 ART OR 1/2 L	NOS 2 HOLD FOR 1/2 LEN	NOS 1 HOLD ART OF PAINTING	NOS 1 HOLD IN WAY OF PAINTING	FORE PEAK
FR. SPACING		24'	32'	32'	32'	32'	32'	32'	32'	32'	32'
HEIGHT OF WING BRACKETS		8' x 3 1/2" x .35	8' x 3 1/2" x .35	10' x 3 1/2" x .35	10' x 3 1/2" x .35	10' x 3 1/2" x .35	10' x 3 1/2" x .35	10' x 3 1/2" x .35	10' x 3 1/2" x .35	10' x 3 1/2" x .35	10' x 3 1/2" x .35
TWEEN DECK FRAMES		5' x 9'	3' x 9'	8' x 0'	5' x 0' - 3' x 9'	3' x 0'	3' x 0'	3' x 0'	3' x 0'	3' x 0'	3' x 0'
BEAMS TO BE FITTED ON EVERY FRAME ON FILL DECK		6' x 3 1/2" x .35	6' x 3 1/2" x .35	6' x 3 1/2" x .35	6' x 3 1/2" x .35	6' x 3 1/2" x .35	6' x 3 1/2" x .35	6' x 3 1/2" x .35	6' x 3 1/2" x .35	6' x 3 1/2" x .35	6' x 3 1/2" x .35
RUDDER & ABOVE LLOYD'S REQUIREMENTS FOR STOCK DIAS AND TO BE FITTED WITH 6M LINER		6' x 3 1/2" x .35	6' x 3 1/2" x .35	6' x 3 1/2" x .35	6' x 3 1/2" x .35	6' x 3 1/2" x .35	6' x 3 1/2" x .35	6' x 3 1/2" x .35	6' x 3 1/2" x .35	6' x 3 1/2" x .35	6' x 3 1/2" x .35
MAIN SHEERSTRAKE INCREASED 10' FOR 1/2 LENGTH		6' x 3 1/2" x .35	6' x 3 1/2" x .35	6' x 3 1/2" x .35	6' x 3 1/2" x .35	6' x 3 1/2" x .35	6' x 3 1/2" x .35	6' x 3 1/2" x .35	6' x 3 1/2" x .35	6' x 3 1/2" x .35	6' x 3 1/2" x .35
MAIN STIFFENERS PLATE		6' x 3 1/2" x .35	6' x 3 1/2" x .35	6' x 3 1/2" x .35	6' x 3 1/2" x .35	6' x 3 1/2" x .35	6' x 3 1/2" x .35	6' x 3 1/2" x .35	6' x 3 1/2" x .35	6' x 3 1/2" x .35	6' x 3 1/2" x .35
SHELTER DECK FOR 1/2 LEN.		6' x 3 1/2" x .35	6' x 3 1/2" x .35	6' x 3 1/2" x .35	6' x 3 1/2" x .35	6' x 3 1/2" x .35	6' x 3 1/2" x .35	6' x 3 1/2" x .35	6' x 3 1/2" x .35	6' x 3 1/2" x .35	6' x 3 1/2" x .35
8" & 2" DECK		6' x 3 1/2" x .35	6' x 3 1/2" x .35	6' x 3 1/2" x .35	6' x 3 1/2" x .35	6' x 3 1/2" x .35	6' x 3 1/2" x .35	6' x 3 1/2" x .35	6' x 3 1/2" x .35	6' x 3 1/2" x .35	6' x 3 1/2" x .35

THE REQUIREMENTS OF SECT 20 OF THE RULES TO BE COMPLIED WITH
F.P. OF OIL FUEL TANKS BEING ABOVE 150' F



RIVETING IN MARGIN VERTICAL ANGLES.	
MARGIN VERTICAL ANGLE (OUTSIDE) IN HOLDS	5' x 5' 13' x 1/2" RIV. BOTH PLATES
" AT PAINTING	5' x 5' 17' x 1/2"
" AT END ROOM	5' x 5' 20' x 1/2"
MARGIN VERTICAL ANGLE (INSIDE) IN HOLDS	5' x 5' 13' x 1/2" RIV. TO MARGIN
" AT PAINTING	5' x 5' 17' x 1/2"
" IN END ROOM	5' x 5' 20' x 1/2"

WIDTH OF RIB PLATES.	
1/2 BREADTH	30'-0" 1/2 KEEL + 7'-0"
DEPTH TO UPPER DECK LESS RISE OF FLOOR	39'-2" 1 1/2 72' + 6'-0"
SHELL ABOVE UPPER DECK	7'-0" 1 1/2 72' + 18'-0"
LESS BRIDGE	13'-0" 3 1/2 72' + 18'-0"
BURGE GIRTH	57'-0" 3 1/2 65' + 16'-0"
" ALLOWANCE	3' 72'-0"
LANDINGS	72'-0"

FRAMES ON BRACKET FLOORS BETWEEN 1/2 L AND 1/2 L FORWARD TO HAVE BACK BRG
PLATE TO BRACKETS AT CENTRE GIRDER AND MARGIN SOLID FLOORS FITTED FOR 1/2 L

GLASGOW.

Alex. Stephen & Sons Ltd.,

No. 576.

M.V. "NOTTINGHAM"

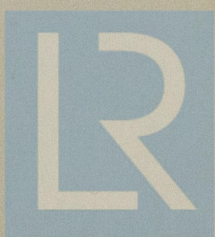
MIDSHIP SECTION
AS BUILT.

W1201-0145

Sister Vessel:-
"GLOUCESTER" *Glo report 64110*

GLASGOW REPORT No. 64614

RETAIN



© 2019

Lloyd's Register
Foundation