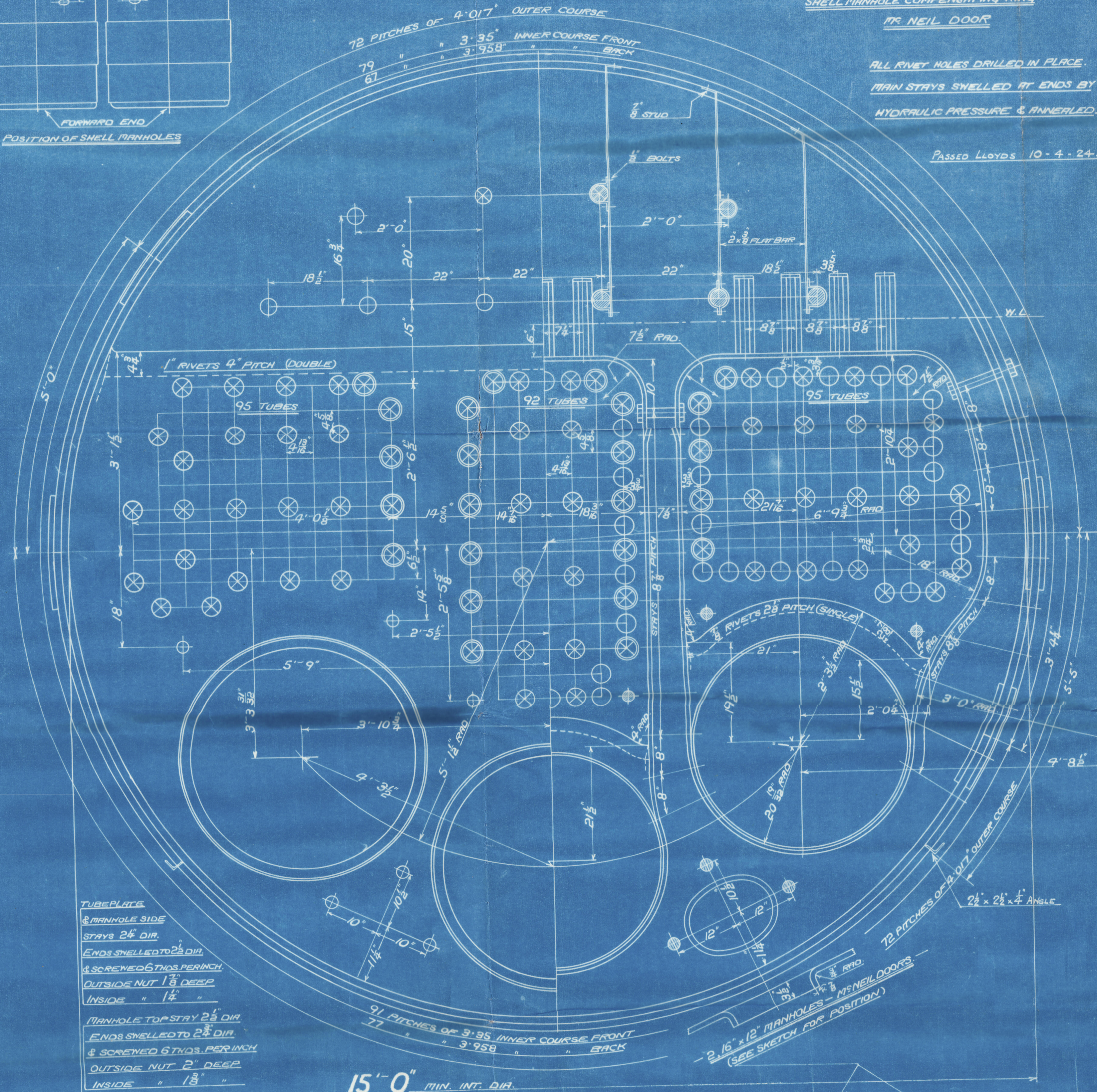
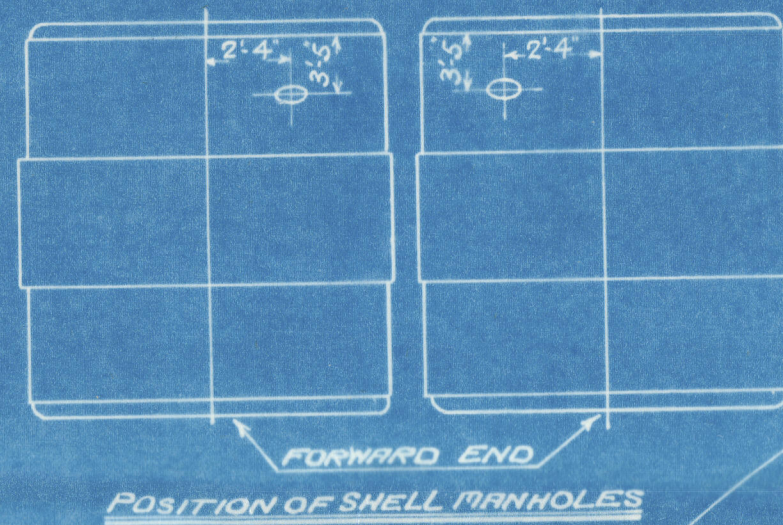
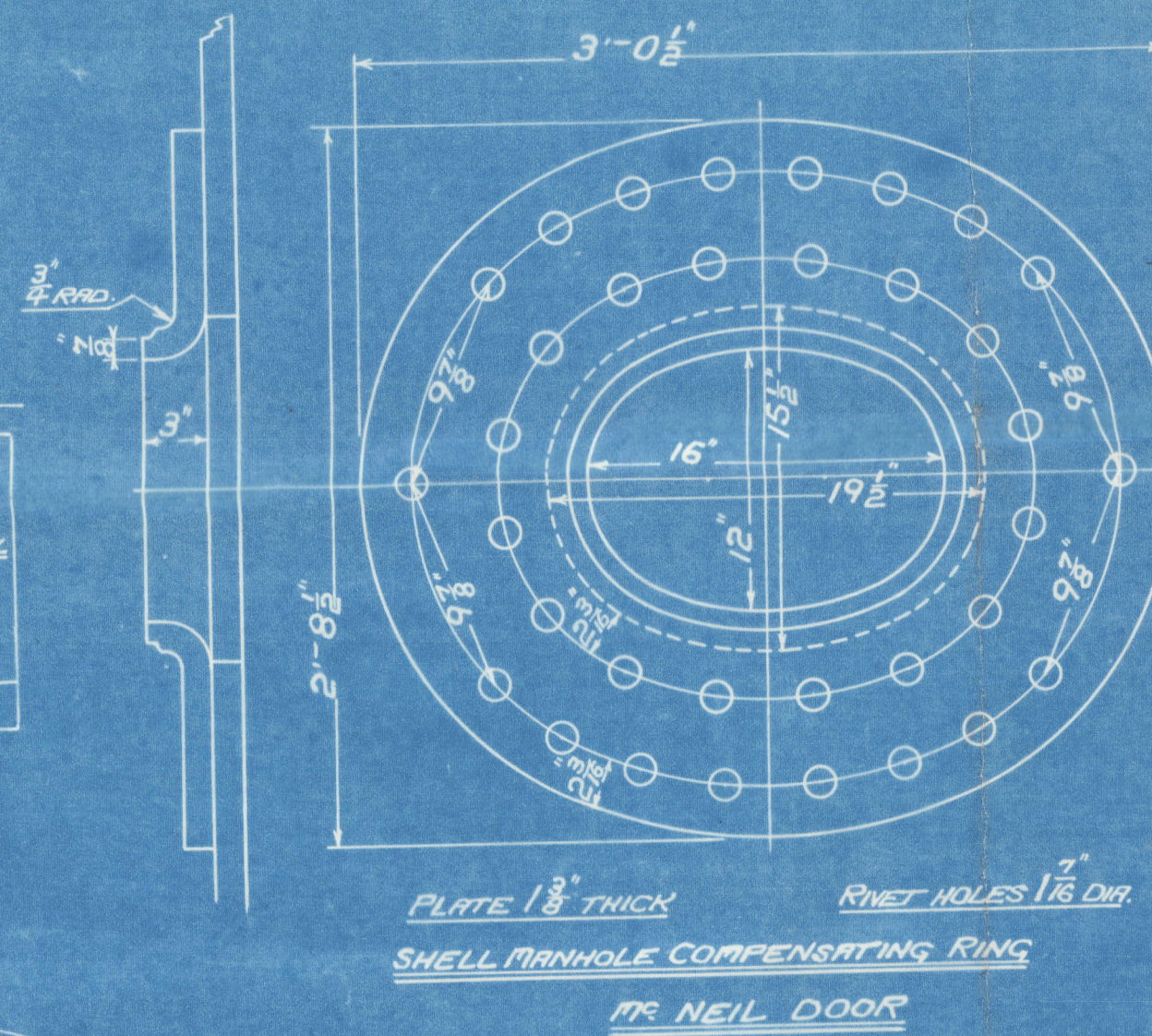


SURFACES	ONE BOILER 2 BOLLERS
TUBES	3320 6640
FIREBOX TOP AND SIDES	190 380
TUBEPLATE	97 194
FURNACES	245 492
TOTAL HEATING SURFACE	3853 7706
GRATE AREA (5" 0" BARS)	105 210
TUBE AREA	28 58 57 16
WATER	217 434
STEAM SPACE	645 1290
GRATE AREA : HEATING SURFACE	1 : 36.7
WATER : AREA	3.68 : 1
STEAM SPACE : WATER	1 : 2.05
% BOILER ABOVE FIREBOX	30.6
WEIGHT OF WATER	37 TONS 74 TONS

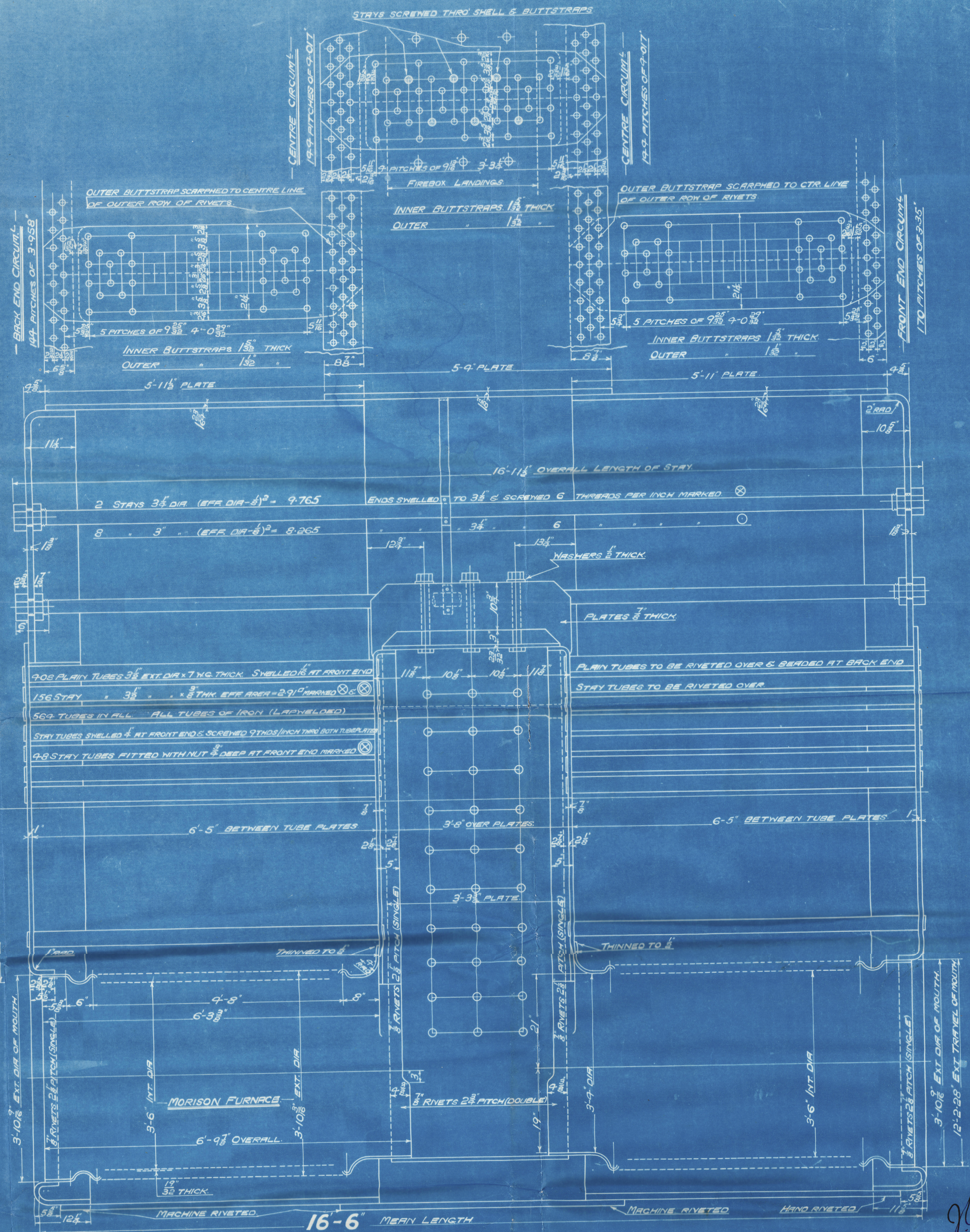
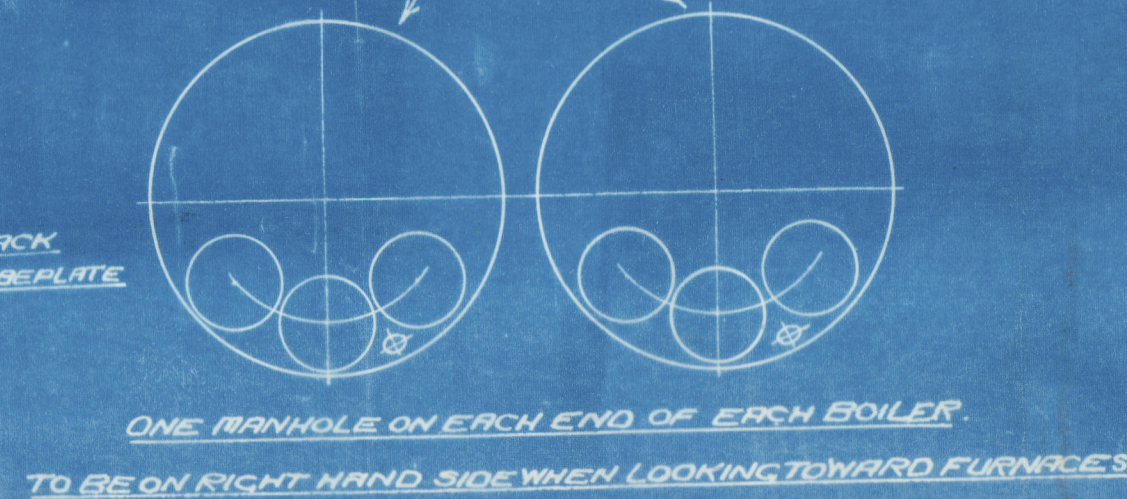
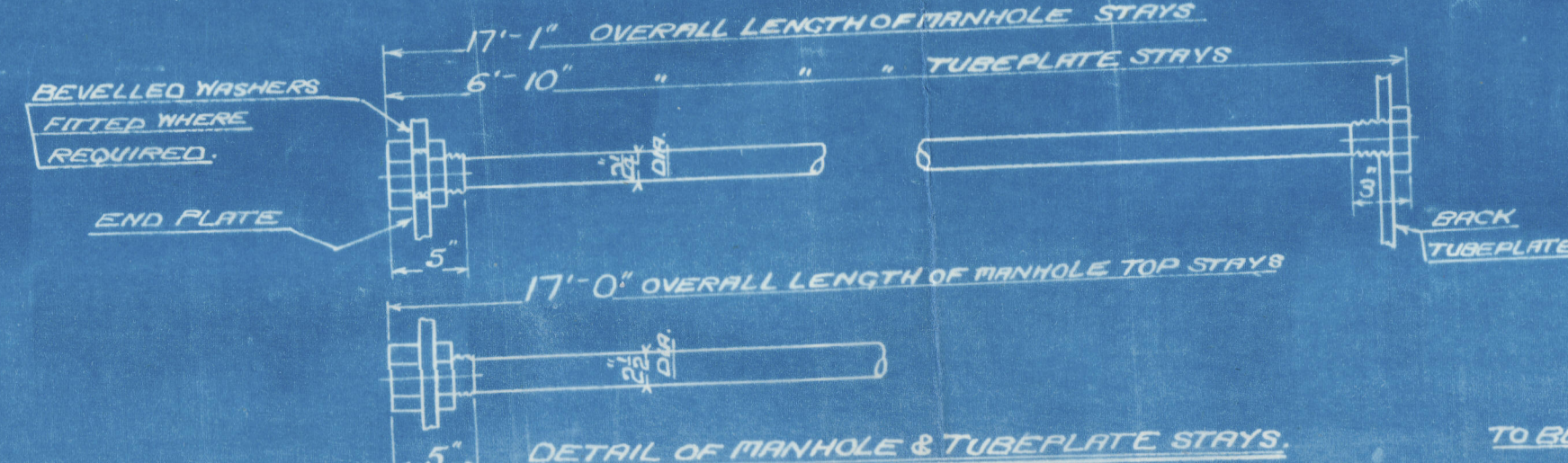
RIVETING	LONG	BACK	CENTRE	FRONT
OUTER COURSE	1 1/2	1 1/2	1 1/2	1 1/2
INNER COURSE	1 1/2	1 1/2	1 1/2	1 1/2
PITCH	9 1/2	9 1/2	3.958	4.017
% PLATE	85.35	85.3	63.6	64.2
% RIVET	92.5	92	49	72.8
% COMBINED	89.2	89.3		48.8

LIMITS OF TENSILE STRENGTH & MATERIAL	28 TO 32 TONS	SIEMENS MARTIN STEEL
SHELL BUTTSTRAPS AND GIRDERS	28 + 30	
OTHER PLATES	26 + 30	
FURNACES	26 + 30	
MAIN STAYS	28 + 32	
RIVET BARS	26 + 30	
SCREENED STAYS	2 1/2 TONS	IRON



TUBEPLATE  
& MANHOLE SIDE  
STAYS 2 1/2 DIA.  
ENDS SHELLED TO 2 1/2 DIA.  
& SCREENED 6 TUBES PER INCH  
OUTSIDE NUT 1 1/2 DEEP  
INSIDE " 1 1/2 "

MANHOLE TOP STAY 2 1/2 DIA.  
ENDS SHELLED TO 2 1/2 DIA.  
& SCREENED 6 TUBES PER INCH  
OUTSIDE NUT 2" DEEP  
INSIDE " 1 1/2 "



**MAIN BOILER**  
- 2 OFF EACH CONTRACT N° -  
**CONT'S N° 799 - 800 - 819.**  
- WORKING PRESSURE 200 LBS. PER SQ. INCH -  
- TEST " 350 " -  
- TO PASS LLOYD'S SURVEY -  
- SCALE 1" = ONE FOOT -

POSITION	MARK	DIA.	DIA. " 357 "	SCREENED
TOP & SIDES	○	1 1/2	2.199	10

ALL FIREBOX STAYS SCREENED THRO' BOTH PLATES & NUT FITTED AT EACH END & BEVELLED TO 2 1/2 DIA. AND FIREBOX & SHELL WHICH BEVELLED & ARE CALLED.  
ALL 1 1/2 NUTS & DEEP EXCEPT ON GIRDER TOPS WHERE THE OUTSIDE NUTS ARE 1 1/2 DEEP.



OT 30797  
TR N° 50093  
TRADED, 15th APRIL, 1924  
W201-0004  
Lloyd's Register  
Foundation



W1201-0004

D. Rowan & Co. Ltd.

Cont. No 819

2 D.L. Boilers

WP. 200 lbs./sq"

Nº 16842  
LLOYDS TEST  
350 LBS  
WP-200 LBS  
L.C.D.  
4-6-25

Wayfarer

GLASGOW REPORT No. 44060