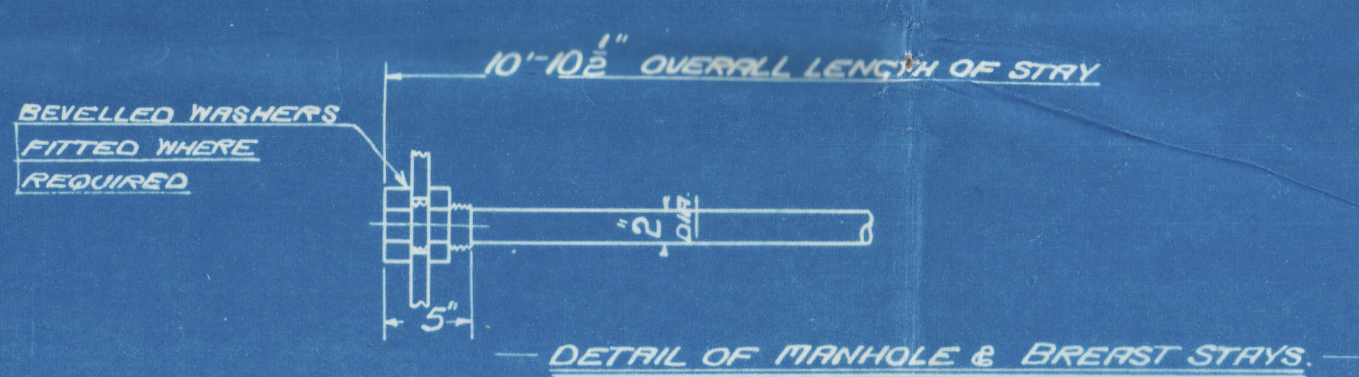
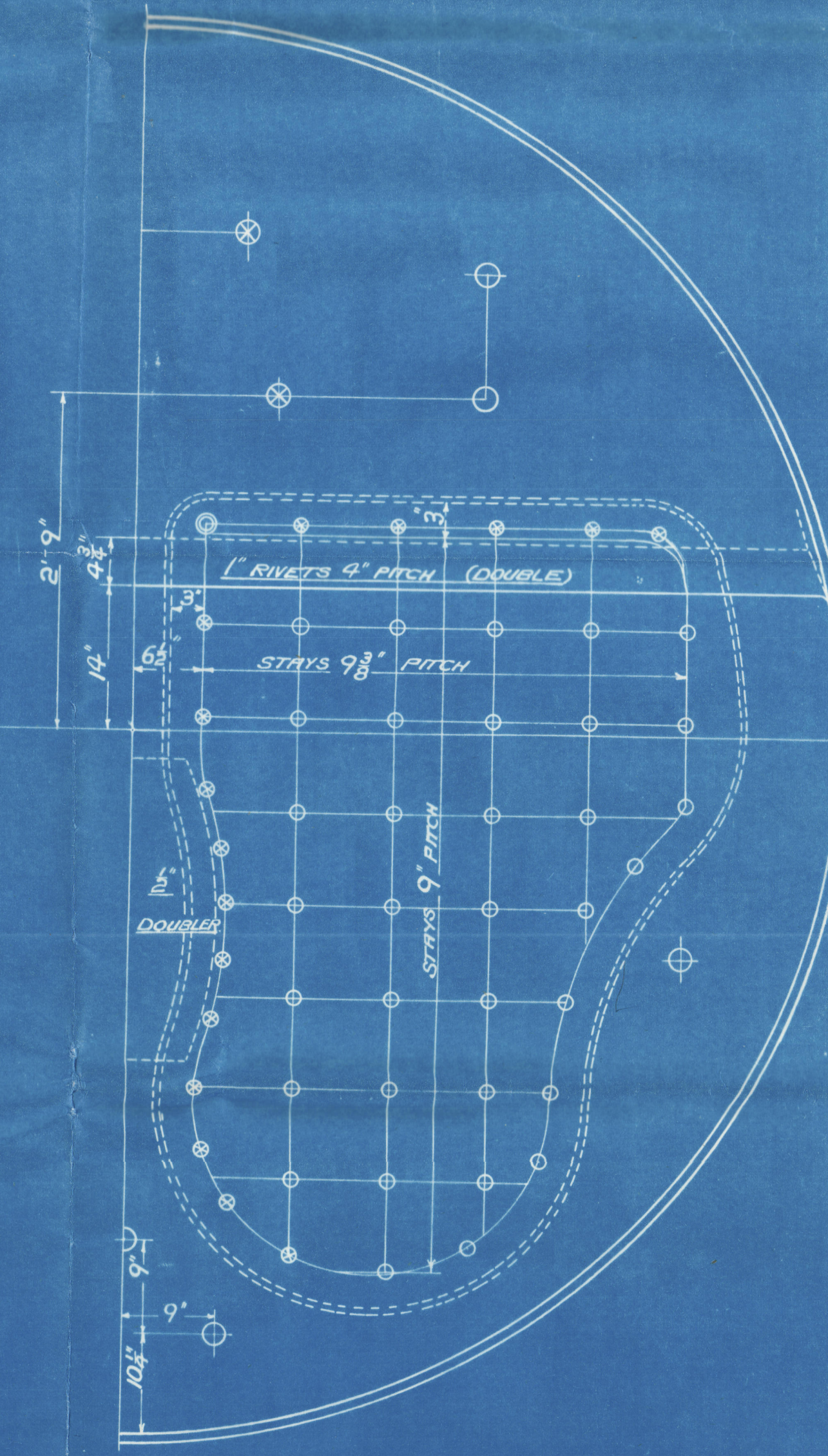
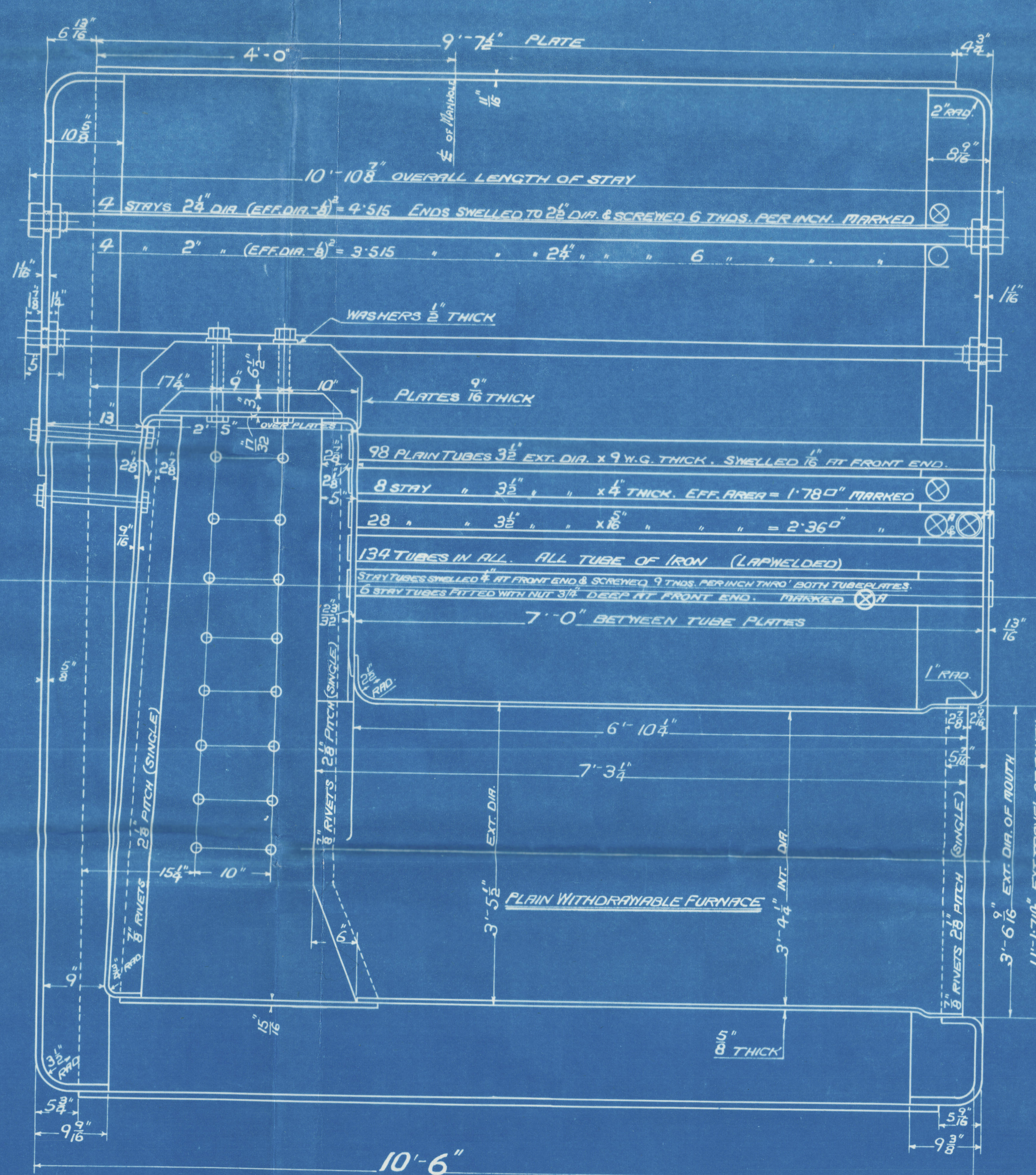
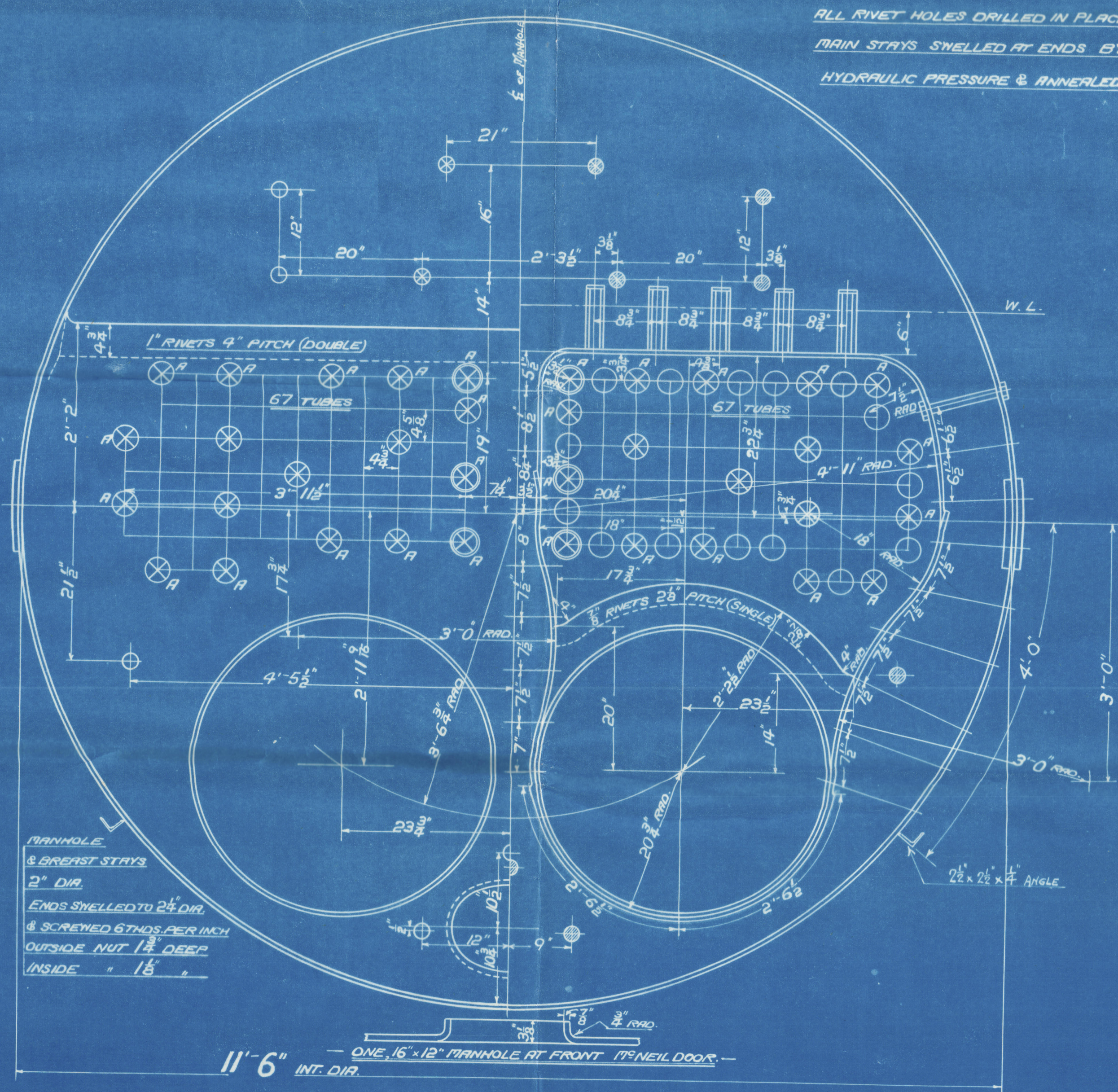
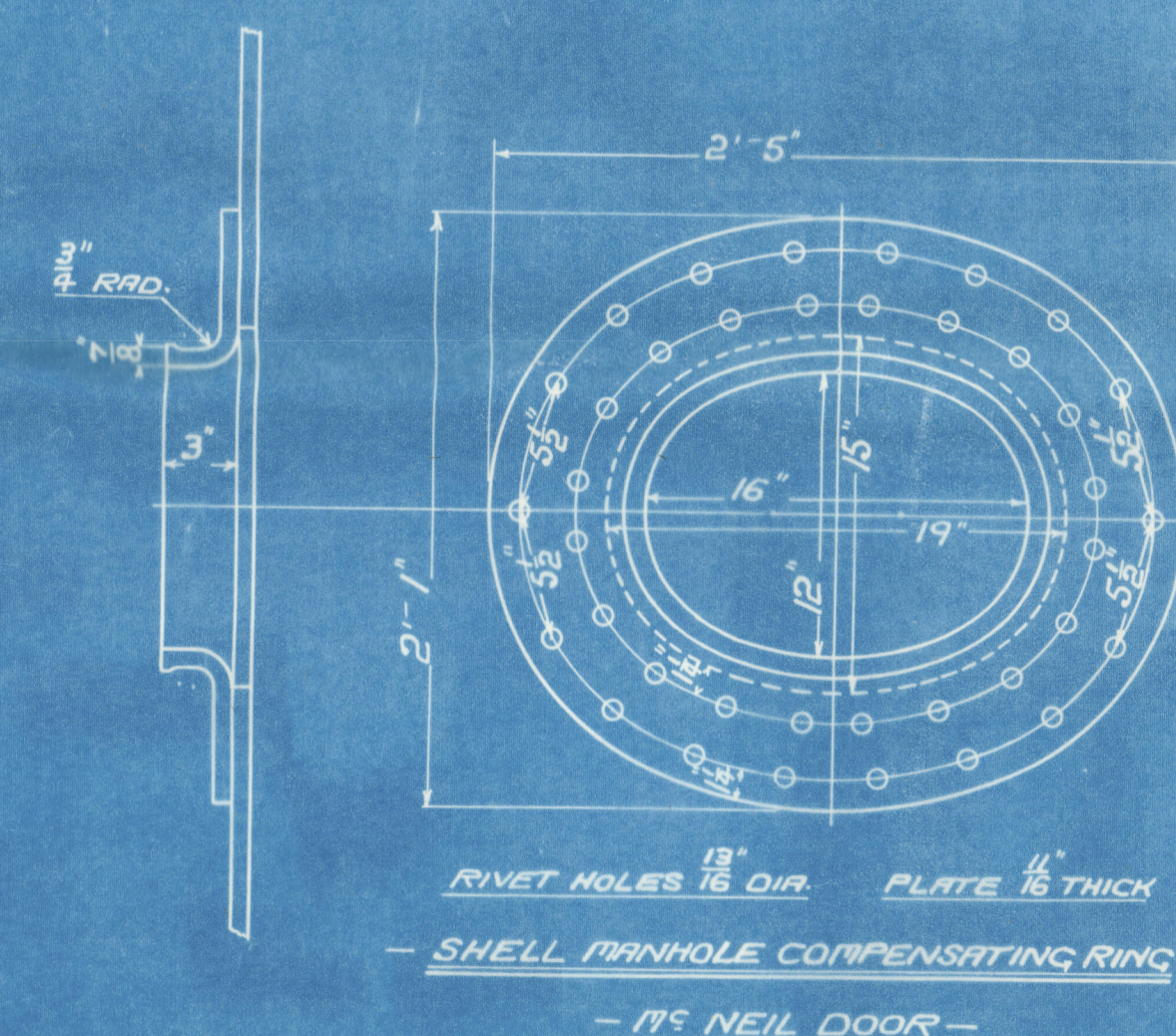
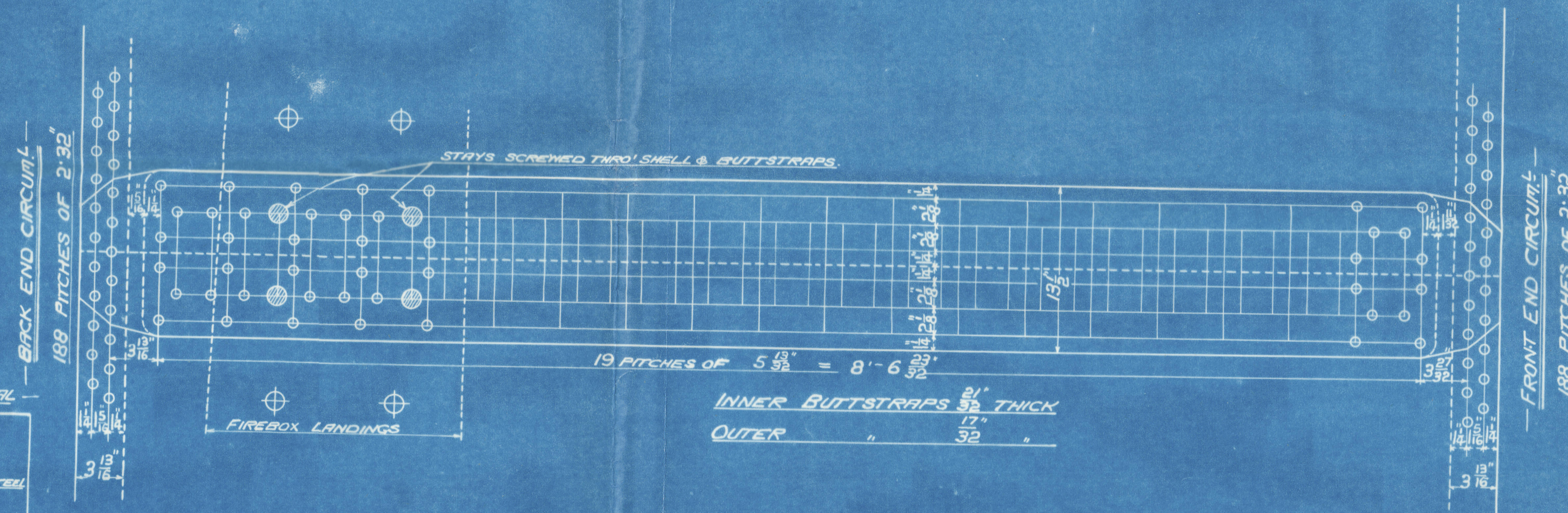


SURFACES	ONE BOILER
TUBES	860
FIREBOX TOP & SIDES	78
" BACK	41
" TUBES PLATE	23
FURNACES	78
TOTAL HEATING SURFACE	1075
GRATE AREA (5" O BARS)	39.5
TUBE AREA	7.19
WATER "	108
STEAM SPACE	255
GRATE AREA : HEATING SURFACE	1 : 32.1
" : TUBE	1 : 25.7
" : WATER	4.65 : 1
" : STEAM SPACE	1 : 3.22
% BOILER ABOVE FIREBOX	39
WEIGHT OF WATER	13 1/2 TONS

RIVETING	LONG	END
RIVET HOLE DIA	1 1/8"	1 1/8"
PITCH	5 3/4"	2 3/4"
% PLATE	84.9	64.9
% RIVET	85.9	53.4
% COMBINED	91.4	

LIMITS OF TENSILE STRENGTH & MATERIAL	
SHELL, BUTTSTRAPS AND GIRDERS	28 TO 32 TONS
OTHER PLATES	26 TO 30 "
FURNACES	26 TO 30 "
RIVET BARS	26 TO 30 "
MAIN STAYS	28 TO 32 "
SCREWED STAYS	21 1/2 TONS
	IRON



POSITION	MARK	DIA.	DIA. - 26 THRU INCH	SCREWED
BACK, TOP & SIDES	○	1 1/8"	1.227	10
" WIDE SPACE & TOP RUN	○	1 1/4"	1.52	10
" TOP CORNER	○	1 1/2"	1.892	10

ALL FIREBOX STAYS SCREWED THRU BOTH PLATES AND NOT FITTED AT EACH END.  
 ALL 1 1/8" NUTS 3/4" DEEP EXCEPT ON GIRDER TOPS WHERE THE OUTSIDE NUTS ARE 1 1/8" DEEP.  
 ALL 1 1/2" NUTS 5/8" DEEP.

**- DONKEY BOILER -**  
 ONE OFF EACH CONTRACT NUMBER -  
**- CON IS NOS 795-800-819.**  
 WORKING PRESSURE 120 LBS. PER SQ. INCH -  
 TEST " 230 " -  
 TO PASS LLOYDS SURVEY -  
 SCALES 1" & 1/2" = ONE FOOT.





W1201-0003

D. Rowan & Co. Ltd.

Cont. N° 819

Donkey Boiler

N° 120 lbs./sq"

N° 16843  
LLOYD'S TEST  
230 LBS  
WP-120 LBS  
L.C.D.  
46.25

*Wayfarer*

GLASGOW REPORT No. 44960

8/1975-

REFRAIN

© 2019

Lloyd's Register  
Foundation  
App'd 30.10.24