

SS. "NEW COLUMBIA"
ARRANGT. FOR FILLING & DISCHARGING PALM OIL.

SCALE - $\frac{1}{4}$ " = 1 FOOT.

ACCOMMODATION

FOR^D

NO. 2 HATCH

SHELTER DECK

6" FILLING & DISCHARGE PIPE.

$\frac{5}{16}$ " STEEL CASING AROUND PIPE.

$\frac{5}{16}$ " STEEL CASING AROUND PIPES.

6" C.I. DISTRIBUTION BOX.

$\frac{1}{2}$ " SCREWED PLUG FOR CLEARING PURPOSES.

PORTABLE PLATES FOR^D & AFT TO BE FITTED FOR ACCESS TO COCKS & JOINTS.

6" DISCHARGE BRANCH FITTED WITH BLANK FLANGE.

6" STRAIGHT THRO' COCKS.

O.T. HATCH.

O.T. H.

LOWER DECK.

WASH PLATE

CLOSING PIECE BETWEEN PIPES.

FILLING PIPE TO FOR^D OIL TANK.

AFTER OIL TANK

FOR^D OIL TANK.

TANK TOP

ELEVATION.

PORT SIDE.

6" BORE PORTABLE BEND TO JOIN HOSE PIPE. FLANGE 11" DIA. TO BE DRILLED TO OWENS STANDARD FLANGE.

BLANK FLANGE TO BE FITTED.

NO. 2 HATCH

SHELTER DECK

FILLING & DISCH. PIPE.

UPPER DECK

DISTRIBUTION BOX

6" COCKS.

FILLING PIPES

DISCHARGE BRANCH.

$\frac{1}{2}$ " SCREWED PLUGS.

LOWER DECK.

TO AFTER OIL TANK. "A" PIPE.

TO FOR^D OIL TANK. "B" PIPE.

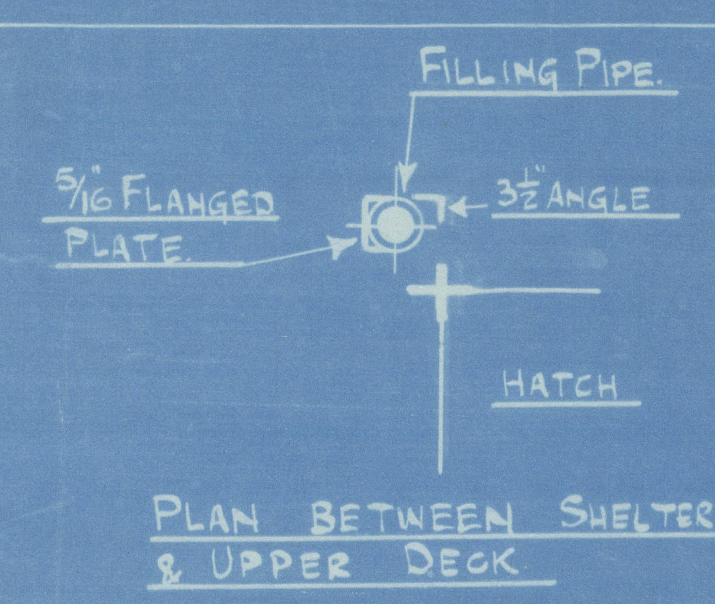
PILLARS AT HATCH CORNERS SHELTER DK. TO TANK TOP.

AFTER OIL TANK.

TANK TOP.

SECTION LOOKING FOR^D.

SHIP SIDE

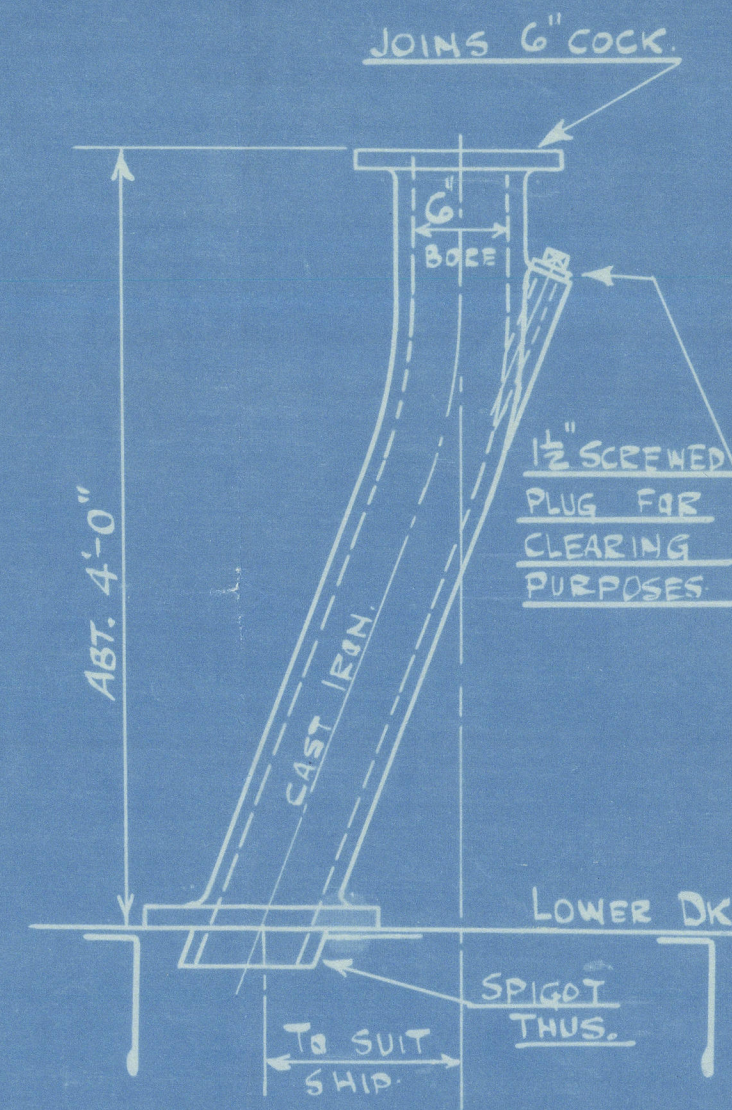


$\frac{3}{8}$ " STEEL CASING AROUND PIPES.

AFTER OIL-TIGHT HATCH

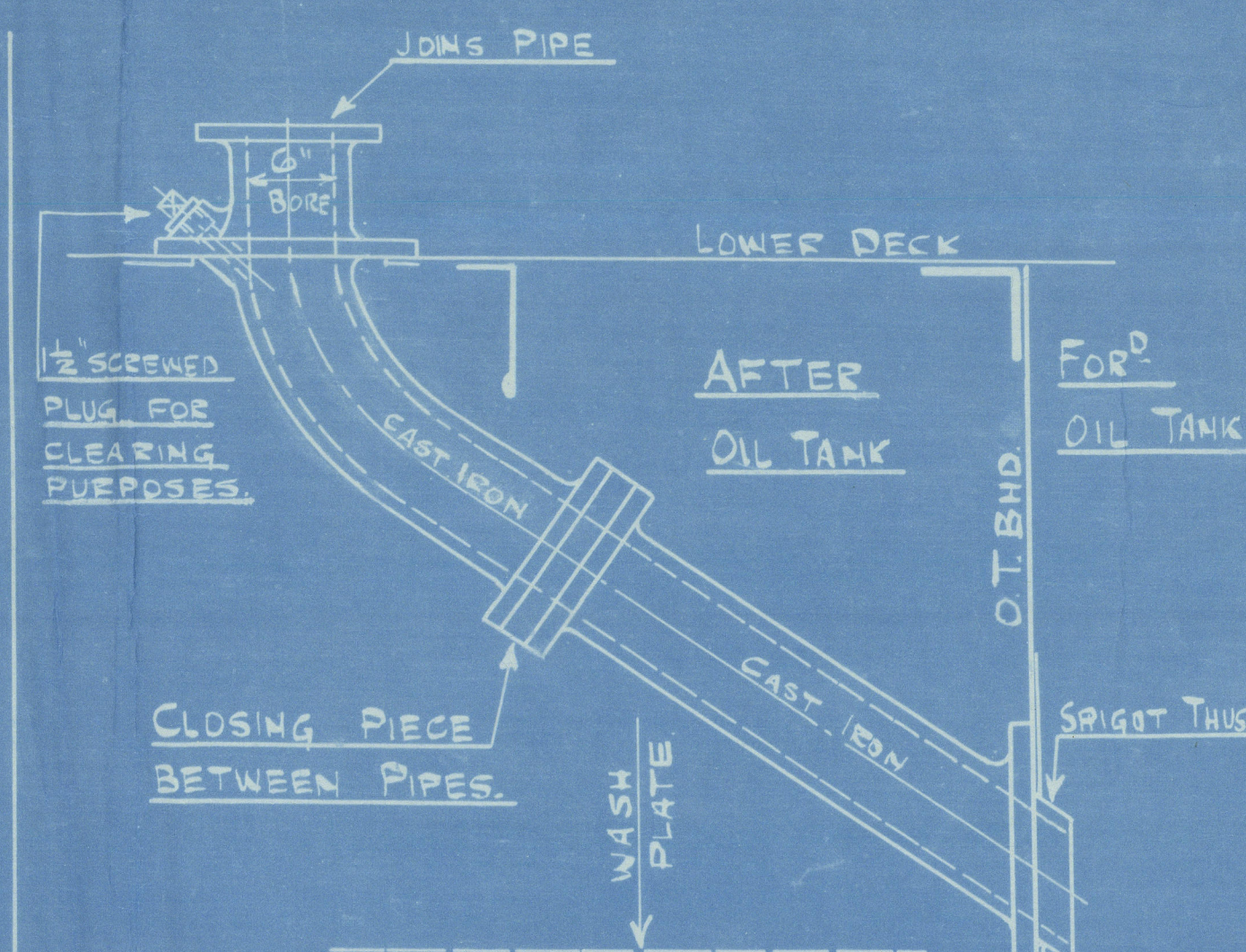
FOR^D OIL-TIGHT HATCH

PLAN AT LOWER DECK



DETAIL OF FILLING PIPE TO AFTER OIL TANK. "A" PIPE.

SCALE - 1" = 1 FOOT.



DETAIL OF FILLING PIPE TO FOR^D OIL TANK. "B" PIPE

SCALE - 1" = 1 FOOT.

PIPES TO BE SOLID DRAWN STEEL.
 FLANGES SCREWED ON & WELDED OVER.

A 4455.

54

RR.

18/7/30