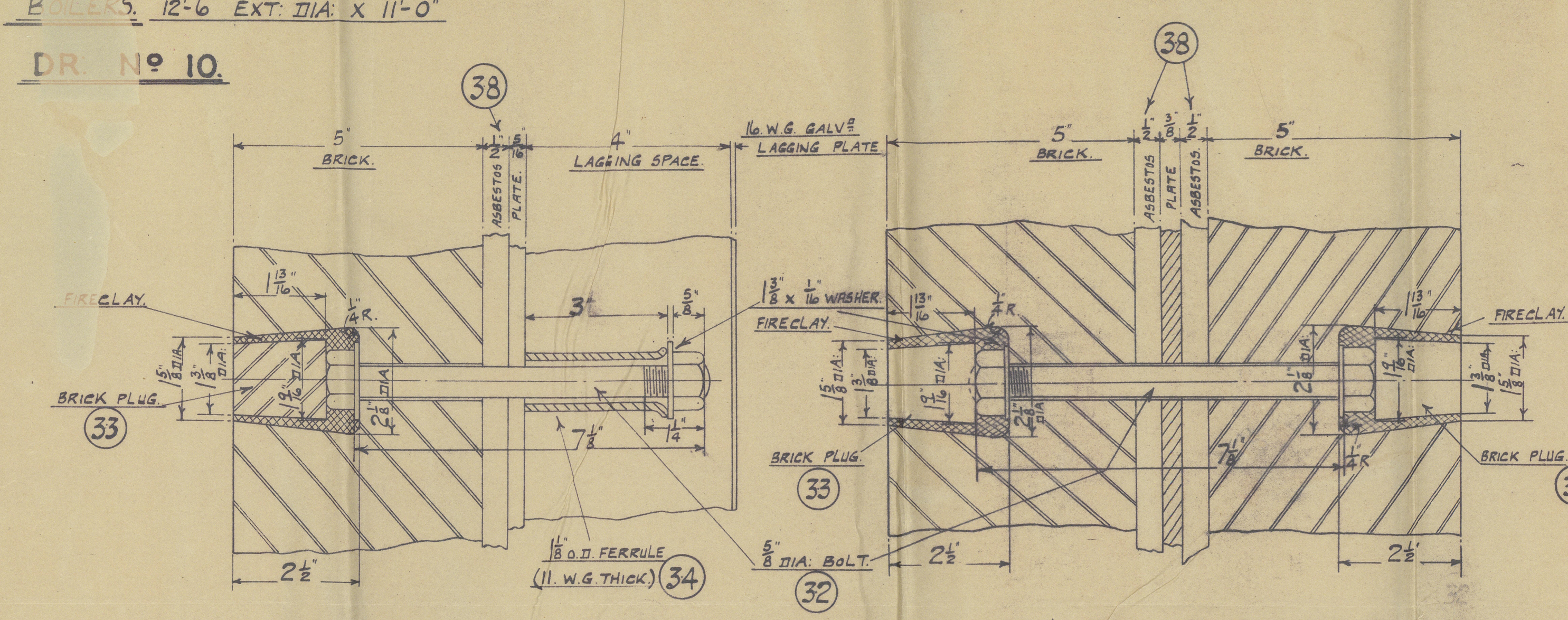


BOILERS 12'-6" EXT. DIA. X 11'-0"

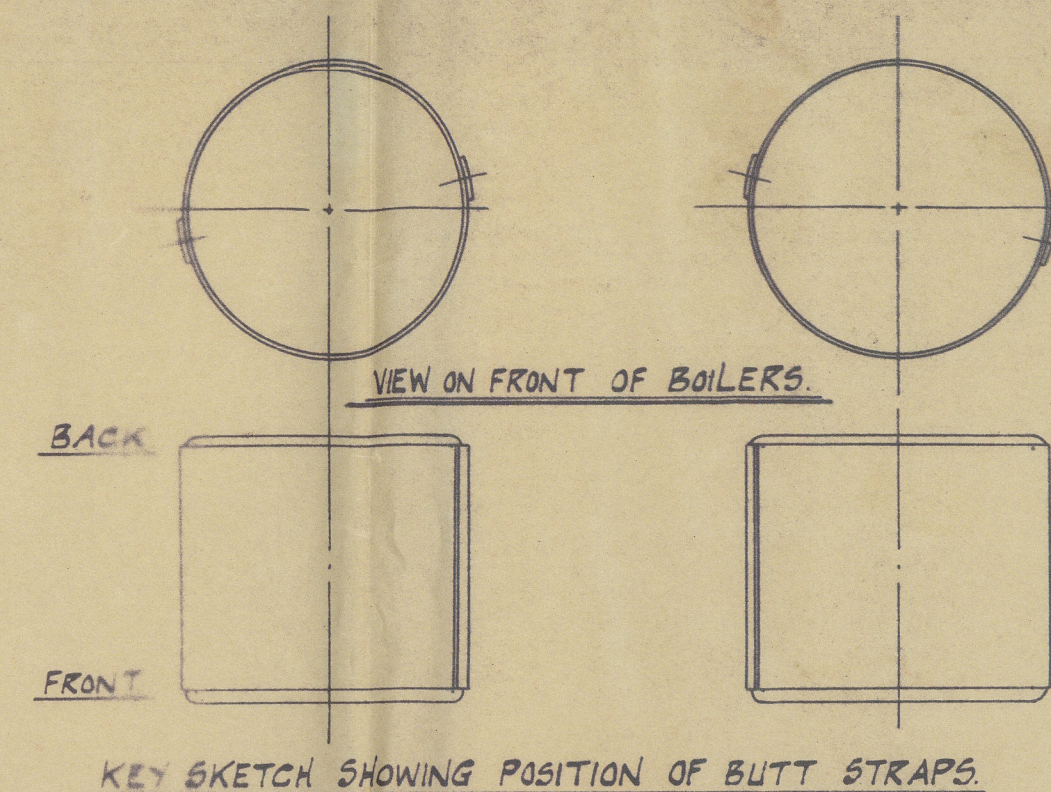
DR. NO. 10

26 MAY 1937

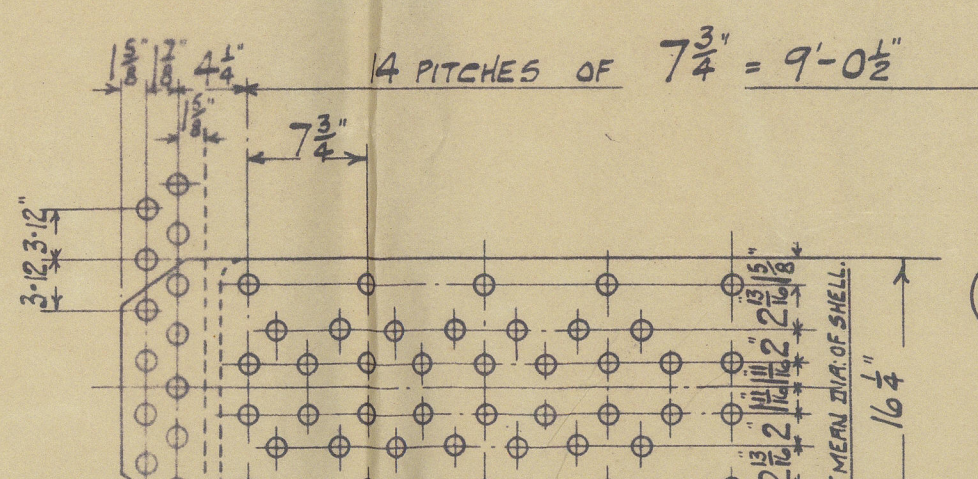


DETAIL OF SIDE, BACK & TOP BRICK BOLT & HOLE HALF FULL SIZE

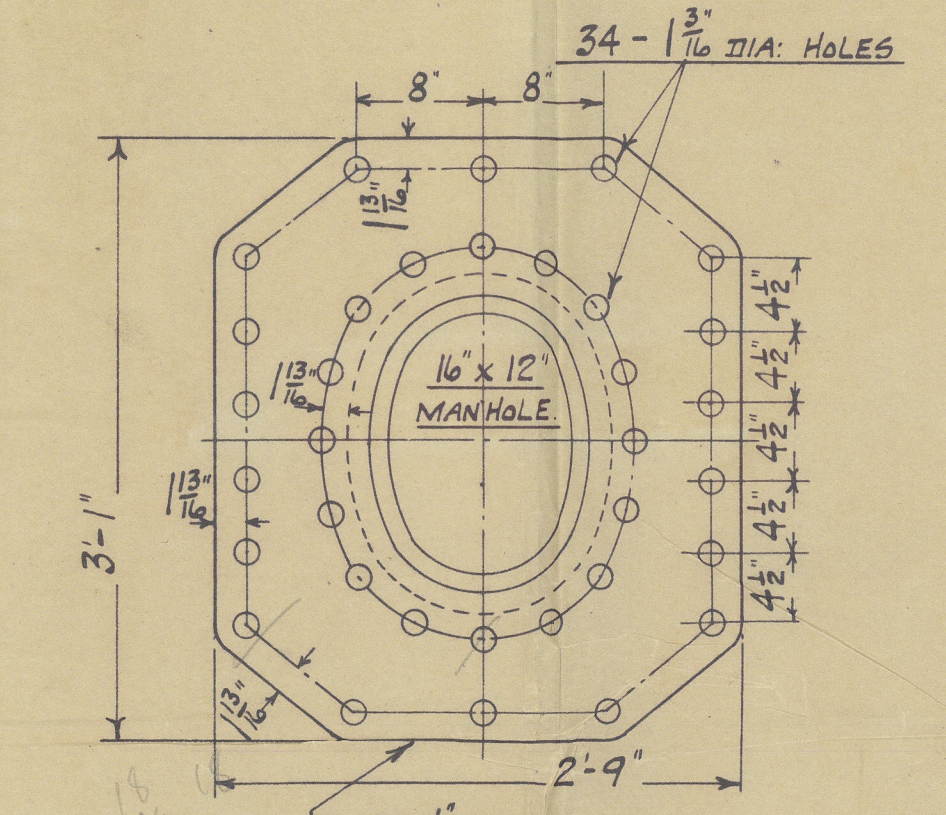
DETAIL OF CENTRE PARTITION BRICKS ETC. HALF FULL SIZE



KEY SKETCH SHOWING POSITION OF BUTT STRAPS

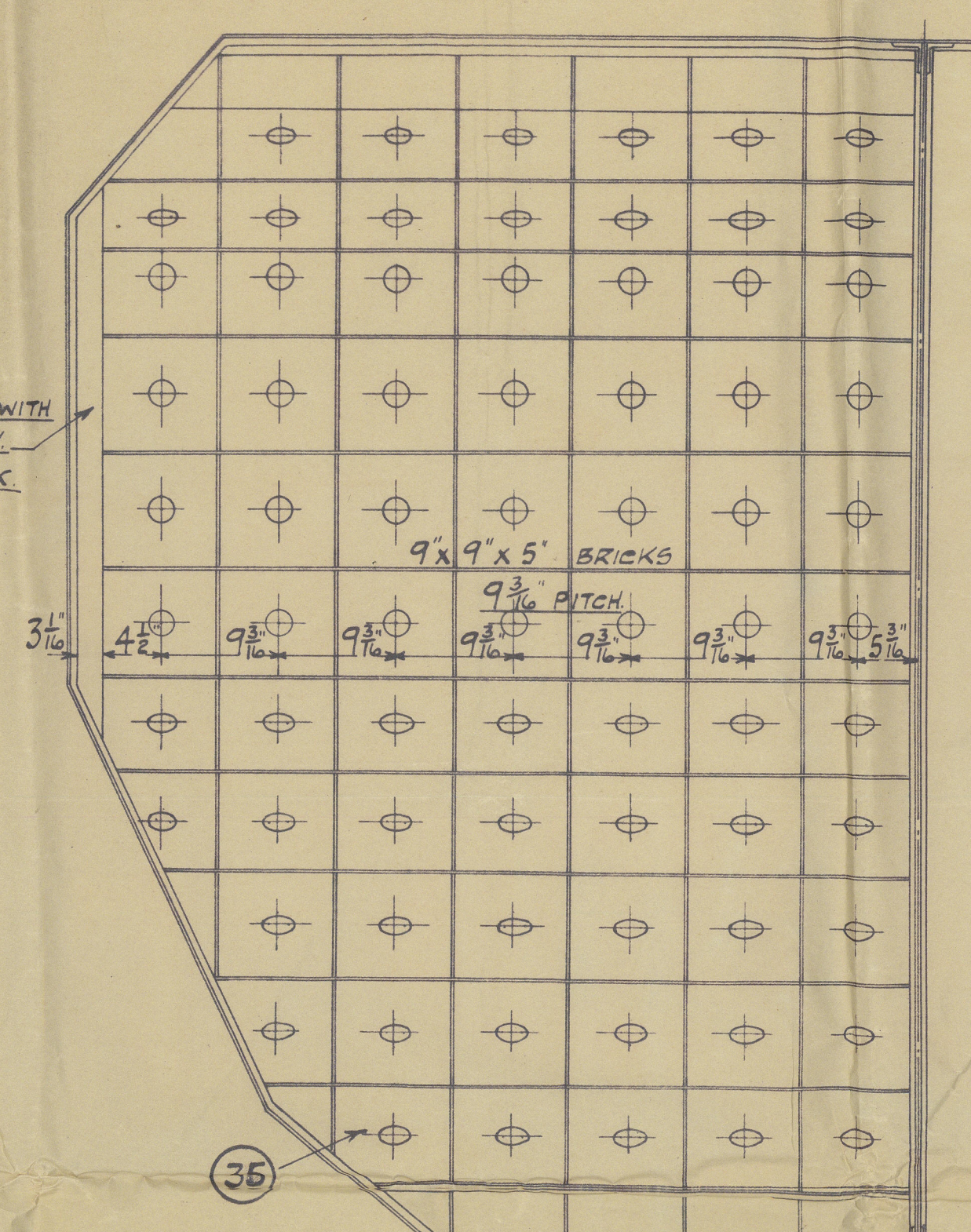


DOUBLE BUTT STRAPS 5/16" THICK OUTSIDE, 3/16" THICK INSIDE. 1/16" DIA. HOLES 7 1/2" PITCH. ALL HOLES DRILLED IN PLACE.

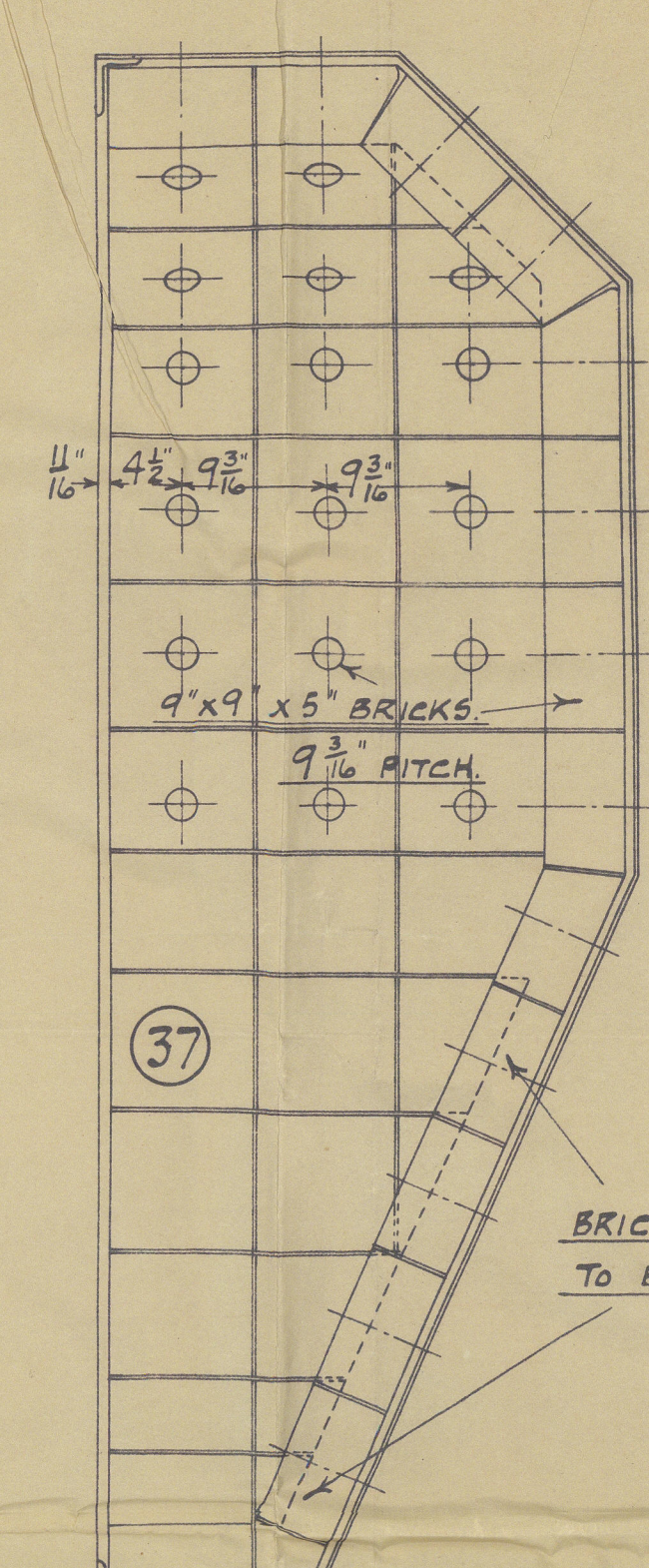


MANHOLE COMPENSATING PLATE ON SHELL

SPACE PACKED WITH FIRECLAY & BROKEN BRICK



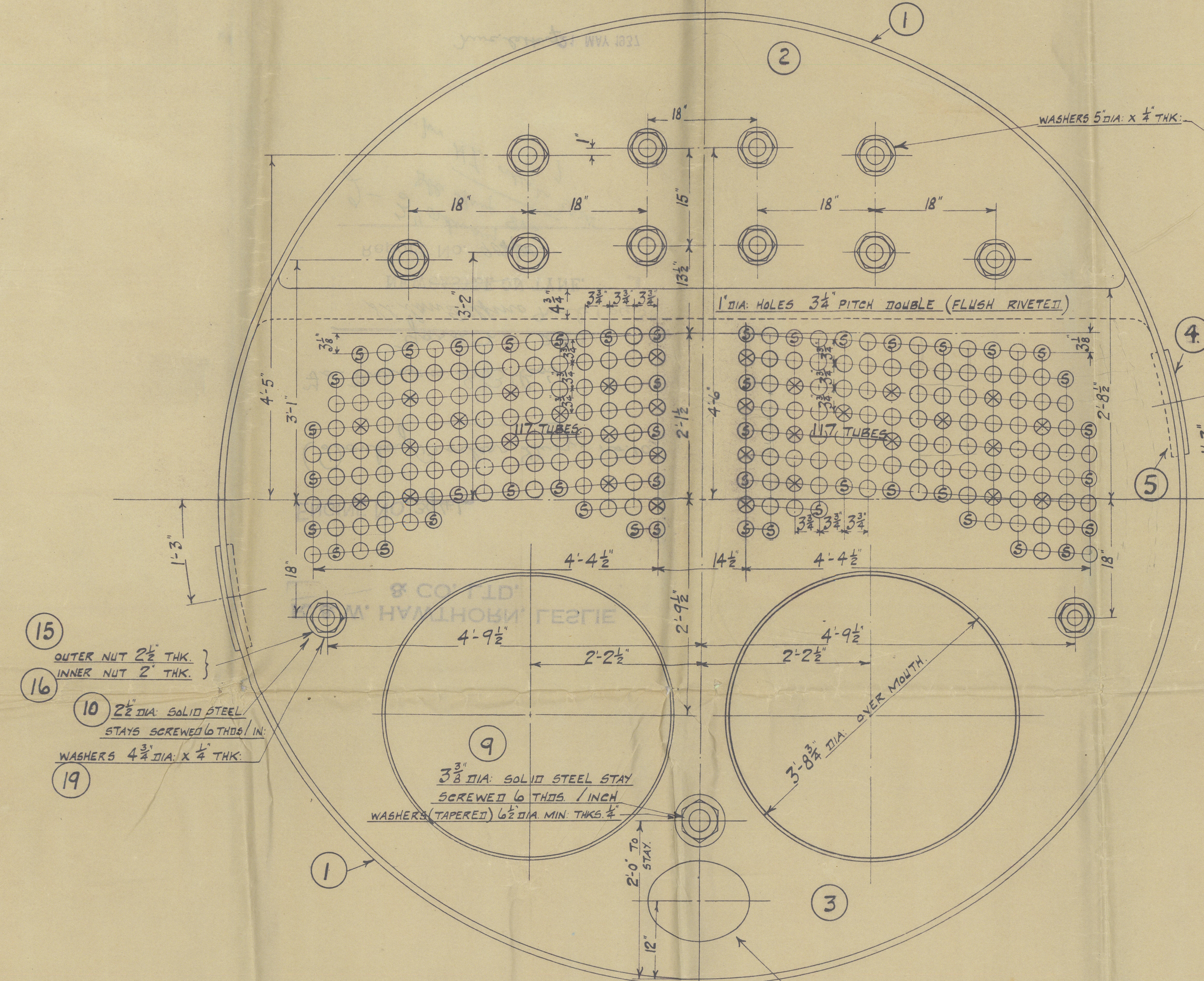
VIEW ON BRICKS AT BACK OF BOX LOOKING FROM INSIDE OF BOX



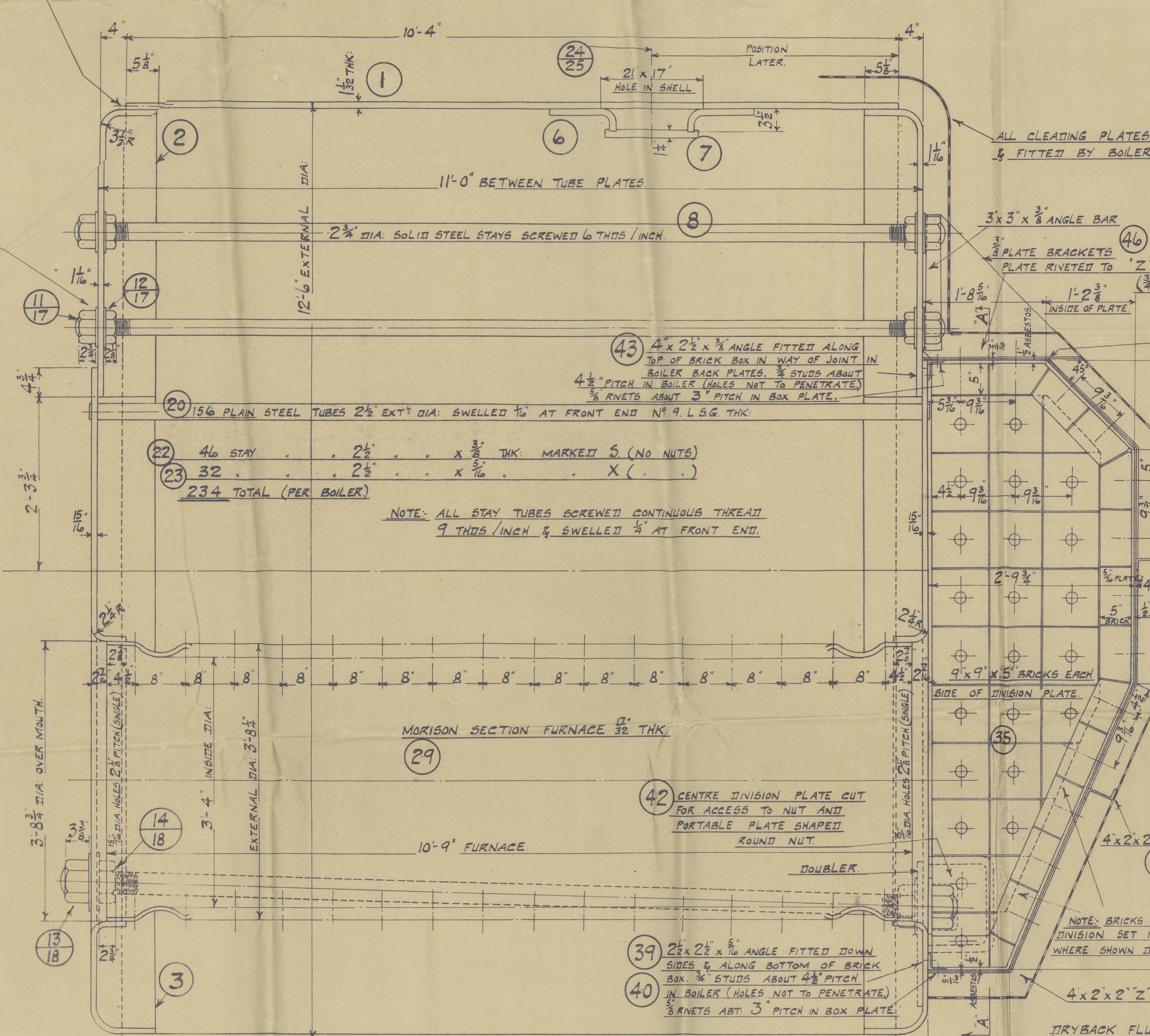
SIDE VIEW OF SITE BRICKS IN BOX

LIST OF MATERIAL AND PARTS. QUANTITIES GIVEN ARE FOR ONE ENGINE NO. 2 (2 BOILERS)

ITEM NO.	DESCRIPTION	QTY.	UNIT	REMARKS	QTY.	UNIT	REMARKS
1	SHELL PLATES	4	14'-6 1/2" X 10'-4 1/2" X 1/2"	1/16" THICK	20-30		
2	TOP ENDS - FRONT & BACK	4			20-30		
3	BOTT ENDS - FRONT & BACK	4			20-30		
4	BUTT STRAPS - OUTER	4	10'-4 1/2" X 1'-5" X 5/16"		20-30		
5	BUTT STRAPS - INNER	4	9'-4 1/2" X 1'-4 1/2" X 5/16"		20-30		
6	COMPENSATING PLATE	2	3'-1 1/2" X 2'-7 1/2" X 1"		20-30		
7	MANHOLE DOORS	4	1'-9" X 1'-5" X 1/2"		20-30		
8	STEAM SPACE STAYS	20	2 1/2" DIA. X 11'-7"		13		
9	WATER	2	3 1/2" DIA. X 11'-11"		13		
10	BREAST	4	2 1/2" DIA. X 11'-9"		13		
11	STEAM SPACE STAY NUTS (OUTER)	40	2 1/2" DIA. X 2 1/2"		13		
12	WATER	4	3 1/2" DIA. X 2 1/2"		13		
13	WATER	4	3 1/2" DIA. X 2 1/2"		13		
14	WATER	4	3 1/2" DIA. X 2 1/2"		13		
15	BREAST	4	2 1/2" DIA. X 2 1/2"		13		
16	WATER	4	3 1/2" DIA. X 2 1/2"		13		
17	STEAM	4	3 1/2" DIA. X 2 1/2"		13		
18	WATER	4	3 1/2" DIA. X 2 1/2"		13		
19	BREAST	4	2 1/2" DIA. X 2 1/2"		13		
20	PLAN TUBES	312	11'-2 1/2" X 2 1/2" DIA. X 9/16" THICK		12		
21	SPACE NUTS	4			12		
22	STAY TUBES	92	2 1/2" DIA. X 11'-7"		12		
23	STAY TUBES	92	2 1/2" DIA. X 11'-7"		12		
24	TOP MANHOLE DOOR JOISTS	4			16		
25	SPACE NUTS	4			16		
26	BUTT	4			16		
27	STAY TUBES	4			16		
28	LIFTING LUGS	8			16		
29	FURNACE	4			16		
30	DOUBLE PLATE	2	2'-5 1/2" X 2'-0" X 1/2"		16		
31	RIVETS	24			16		
32	WASHERS	24			16		
33	BRICK PLUGS	400			20		
34	FERRULES FOR 32	400			20		
35	FERRULES FOR 32	400			20		
36	SPACE NUTS	4			16		
37	STAY TUBES	92			16		
38	ABRASION MILLBOARD	4			16		
39	ANGLE BAR 2 1/2" X 3"	4			16		
40	STAYS & NUTS	32			16		
41	STAYS & NUTS	32			16		
42	ANGLE BAR 3 1/2" X 3"	4			16		
43	ANGLE BAR 4 1/2" X 3"	4			16		
44	2 BARS FOR STAYERS	12			16		
45	DRYBACK DIVISION PLATE	2	2'-10 1/2" X 8'-3" X 1/2"		10		
46	PLATE FOR GUSSETS	2	4'-9" X 2'-6" X 1/2"		10		
47	DRYBACK BACK PLATES	4	9'-3" X 5'-9" X 1/2"		10		
48	TOP	2	9'-6" X 21' X 1/2"		10		
49	BOTT	2	6'-3" X 14' X 1/2"		10		
50	SIDE	4	9'-7" X 2'-11" X 1/2"		10		



VIEW LOOKING ON FRONT OF BOILER



SECTION THRO DIVISION PLATE AT "B.B."

VIEW ON BACK OF BOILER. SHOWING DRYBACK IN SECTION AT "A.A."

OUTSIDE VIEW ON DRYBACK

HEATING SURFACE FOR ONE BOILER

TUBES	1700 sq.
FURNACES (OIL FUEL)	248 sq.
TOTAL	1948 sq.

2-OFF SEE KEY SKETCH FOR POSITION OF BUTT STRAPS

WORKING PRESSURE 180 LBS. / SQ. IN.

TEST PRESSURE 320 LBS. / SQ. IN.

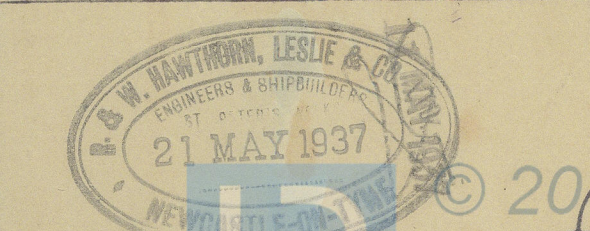
TO LLOYD'S REQUIREMENTS & INSPECTION

BOILERS 12'-6" EXT. DIA. X 11'-0"

SCALE: 1" = ONE FOOT & AS MARKED.

DRAWING NO. 10

ENGINE NO. 3941



DRAWN BY F. DAVISON  
CHECKED BY G. WALKER

2019  
Lloyd's Register  
Foundation



R. & W. HAWTHORN, LESLIE  
& CO. LTD.

ENGINE NO. 3941

(Donkey Boilers, Dwg. No. 10.)

For Furnace S.B. Co's

Yard No. 283.

S.S. San Delfino No. 16438.

NEWCASTLE ON TYNE.

Report No. 904/2

2-3" ordinary  
Dble Shump 8 1/2  
Mr H.L. order no 3925  
7

Recd. letter 21 MAY 1937



© 2019

Lloyd's Register  
Foundation