

17930

PALLION ENGINE WORKS

ARRANGEMENT OF CRANKSHAFT 600 BORE X (1340 + 980)

DRG. No. 4331 O E

SCALE: $\frac{1}{20}$ & $\frac{1}{10}$

NOTES & ALTERATIONS

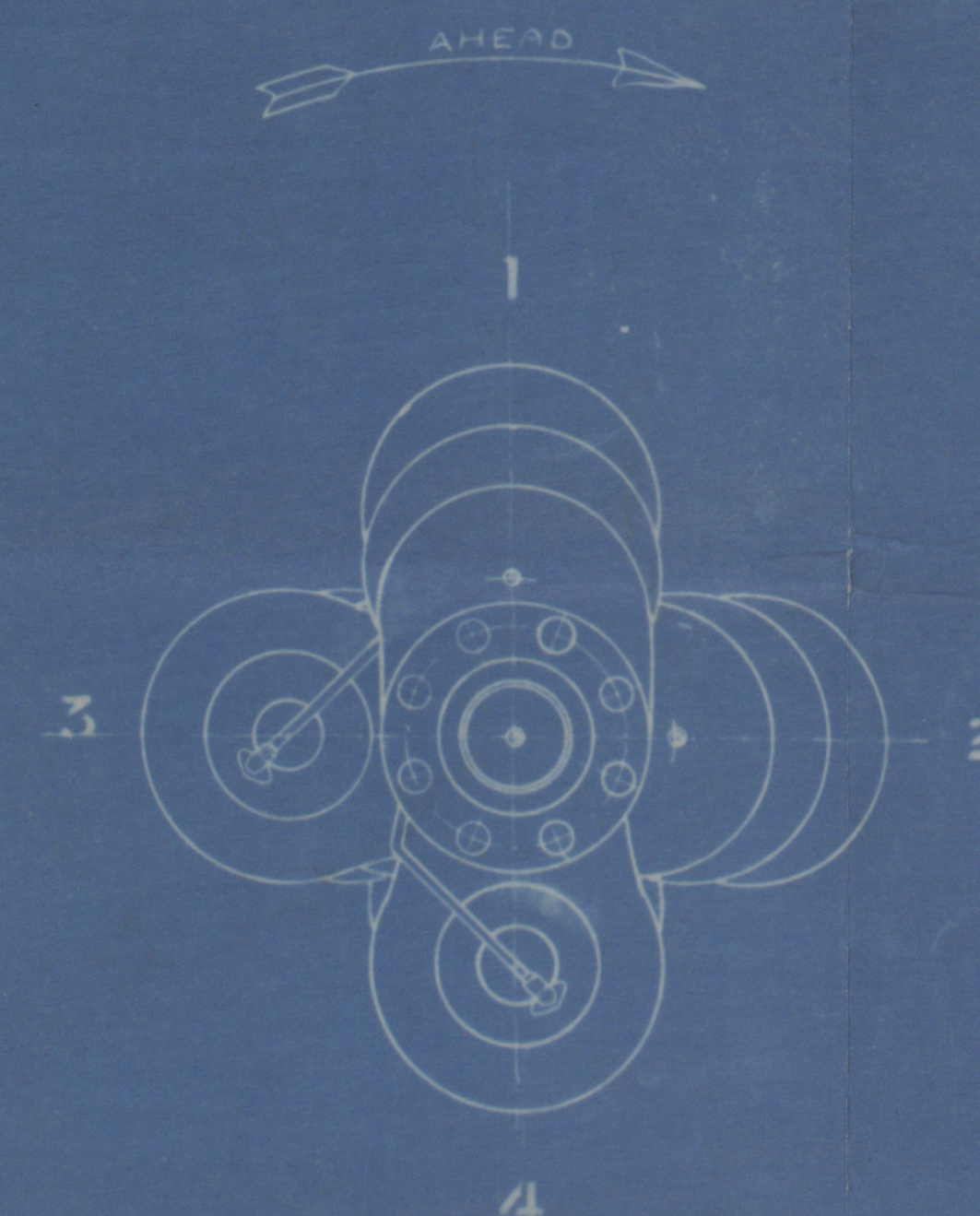
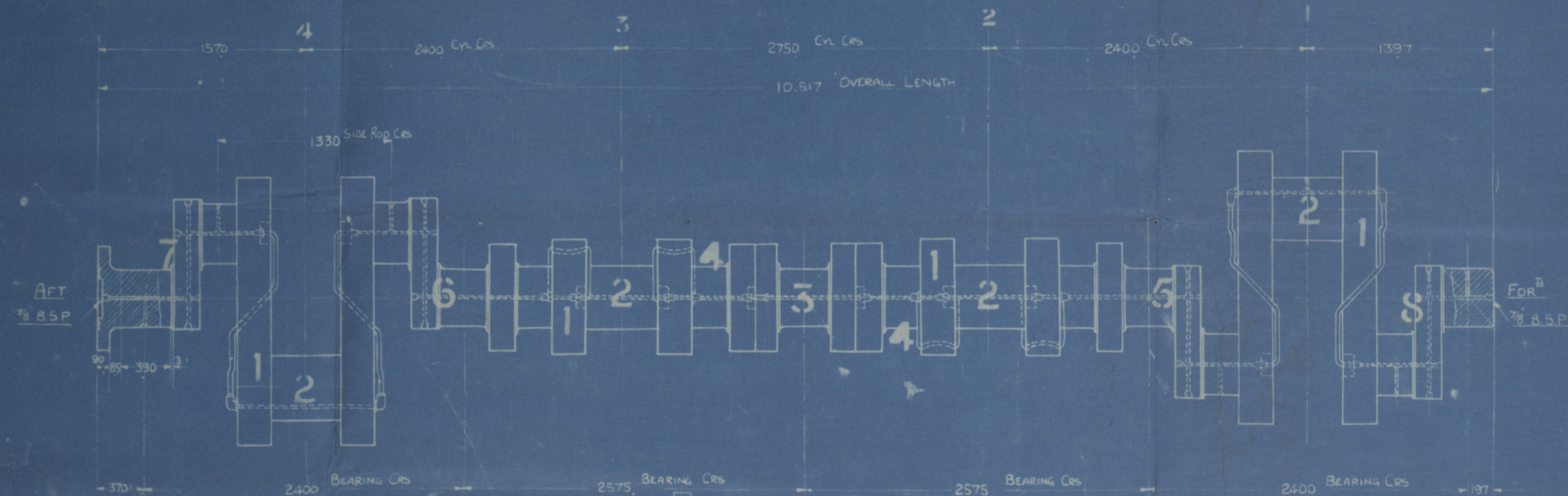
APPROVED BY BRITISH
CORPORATION FOR C397 S
SEE LETTER DATED
6 FEB 1929

MINIMUM SIZES APPROVED
BY B.C.

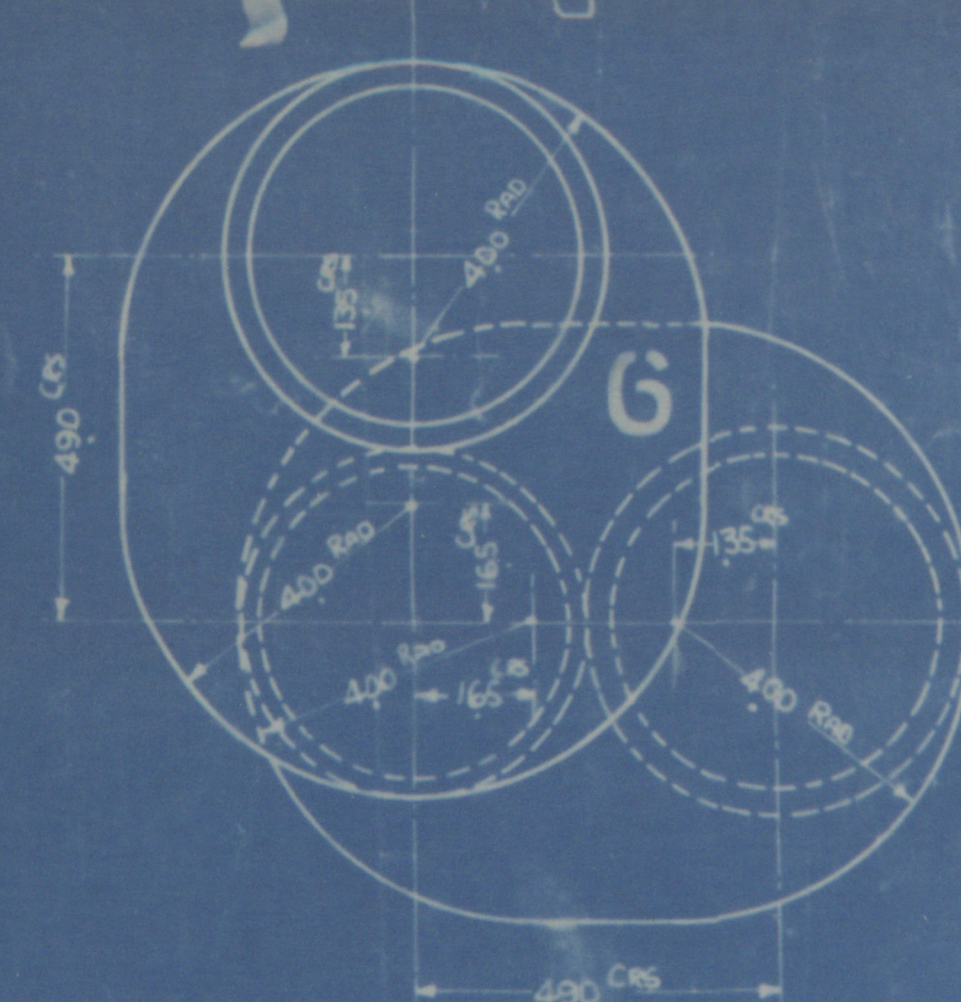
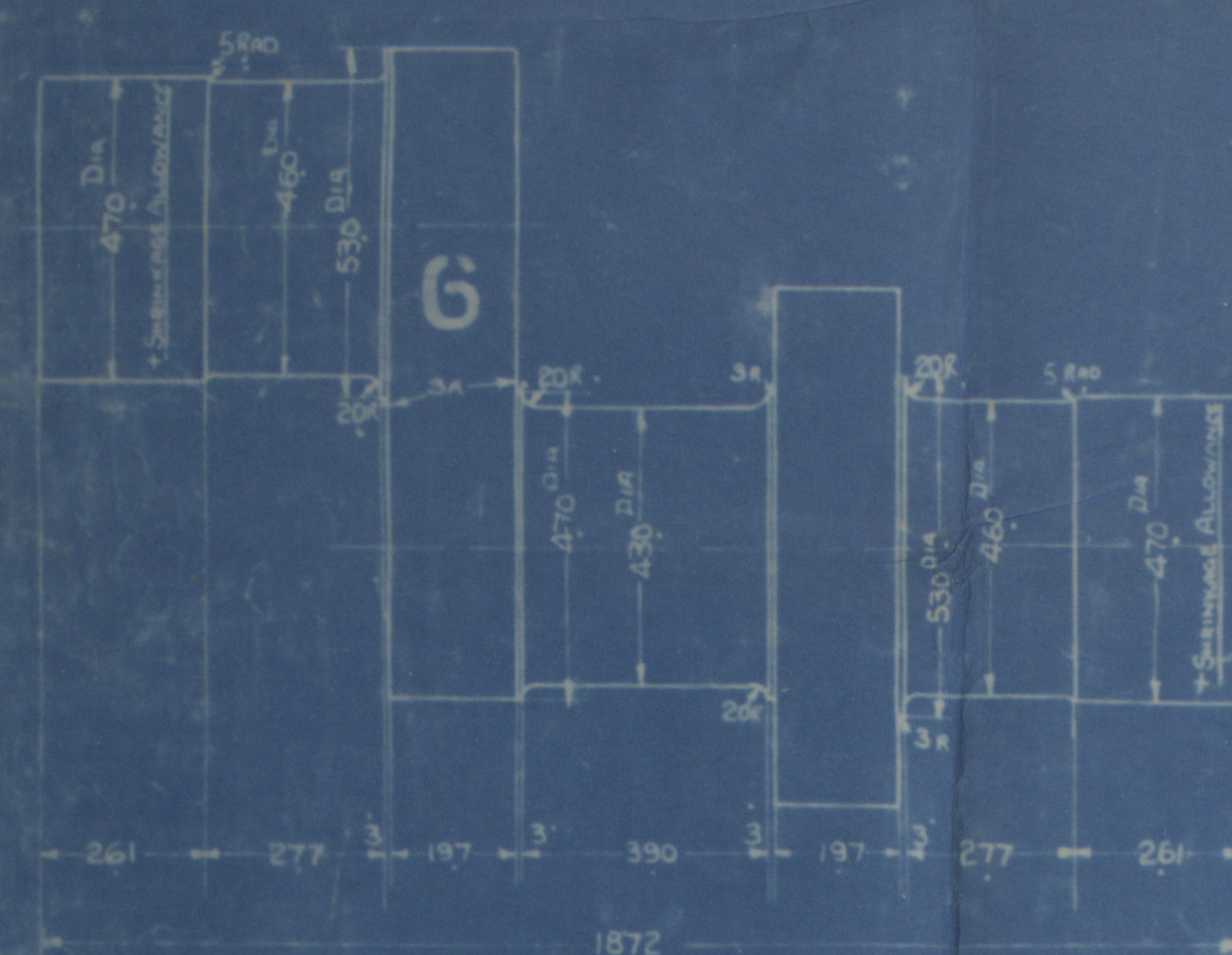
JOURNALS = 16 1/2 (410)
CENTRE PINS = 18 1/2 (464)
CENTRE PINS = 18 1/2 (464)
SIDE PINS = 17 (432)

APPROVED BY LLOYD'S
FOR C603, SEE LETTER
DATED 23 5 29
MINIMUM SIZES APPROVED
BY LLOYD'S

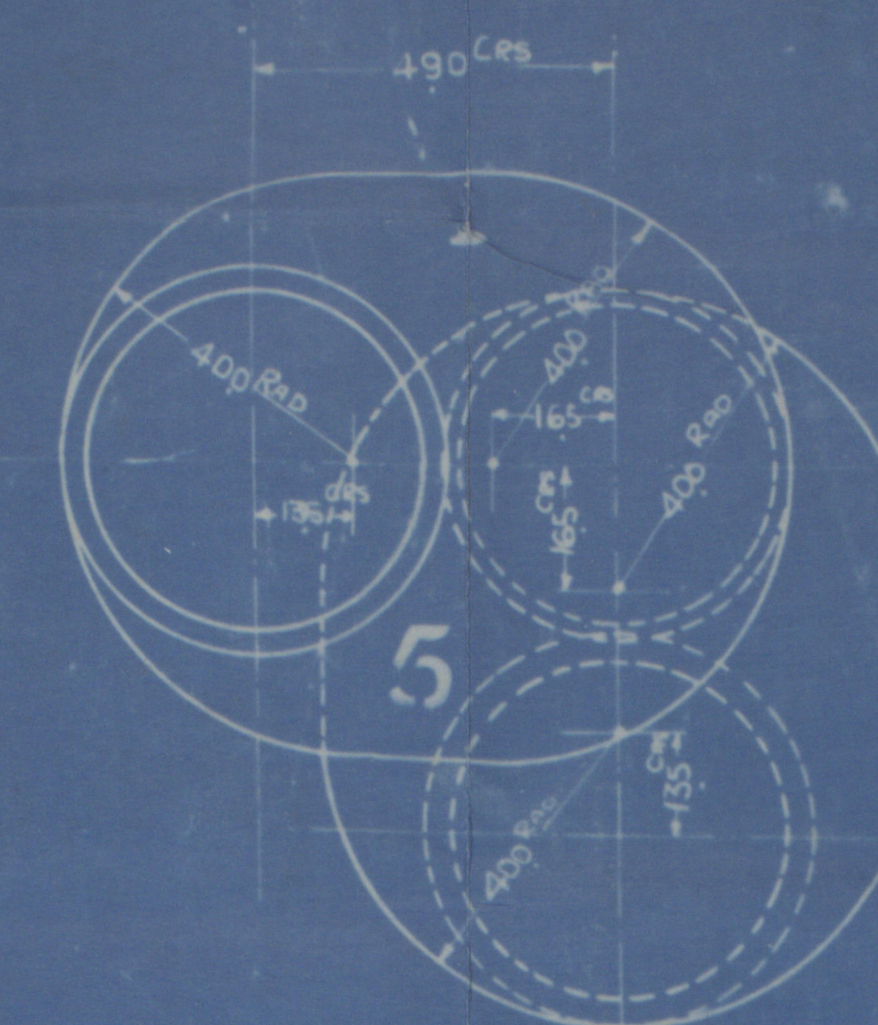
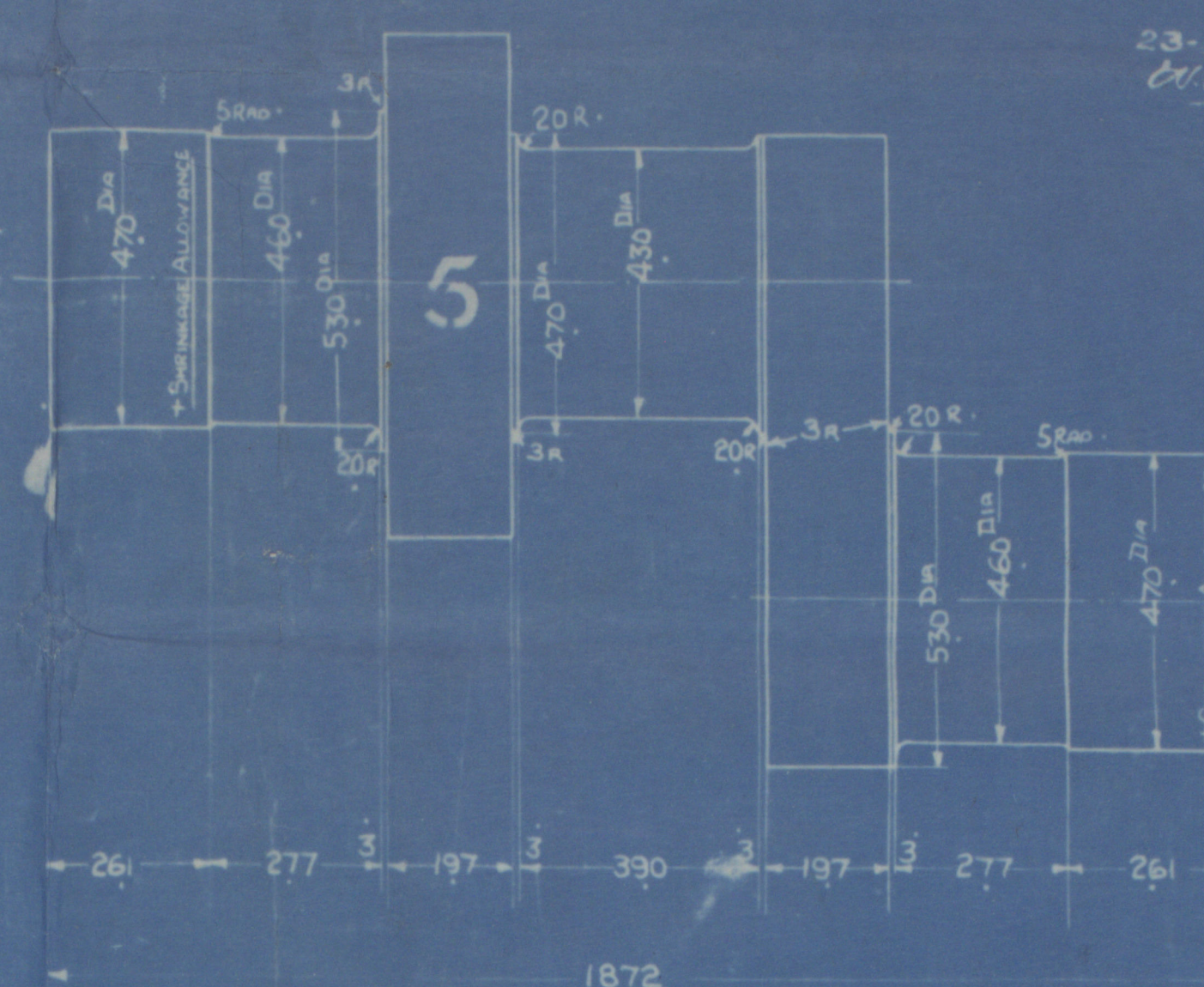
JOURNALS = 42 3/4
CENTRE PINS = 46 1/2
SIDE PINS = 43 1/2



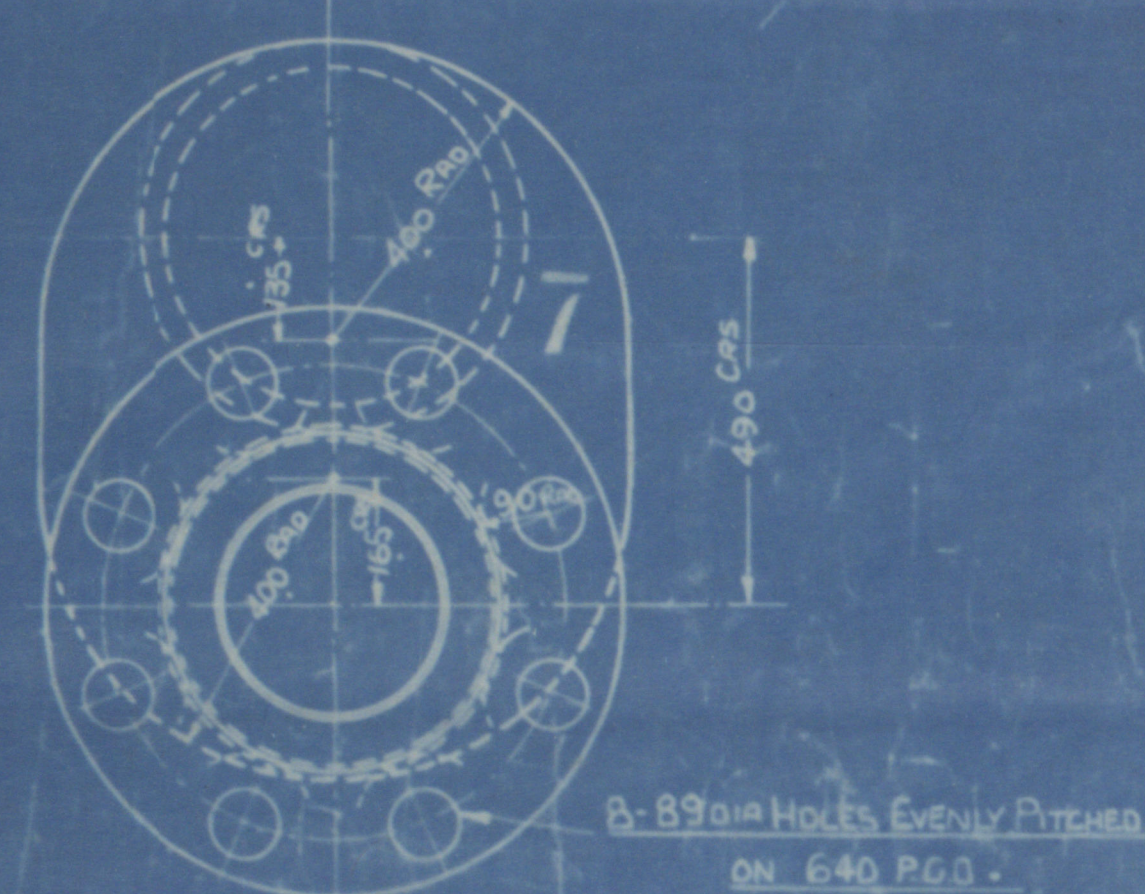
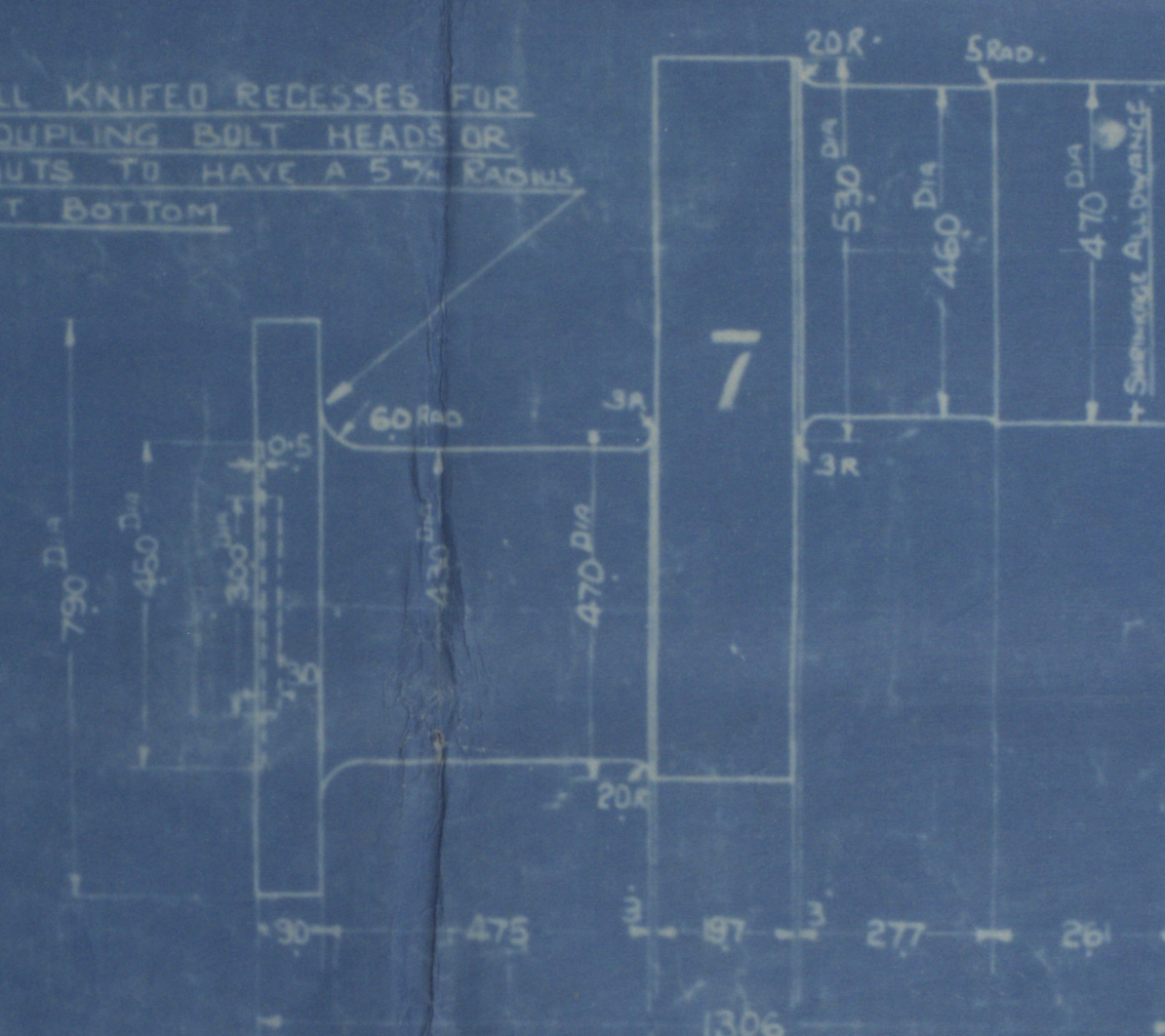
VIEW LOOKING FORWARD
SHOWING CRANK SEQUENCE



FOR DETAIL OF SPECIAL
DRILLING IN THIS FLANGE
FOR CONTRACT NO 597
SEE SCHEME NO 394



NOTE: ALL KNIFE RECESSES FOR
COUPLING BOLT HEADS OR
NUTS TO HAVE A 5/8" RADIUS
AT BOTTOM



8-89mm HOLES EVENLY PITCHED
ON 640 P.G.D.



DRG. No. 4331

DRAWER No. 1

TYPE 60LS4

C. No.

H2676

597-8

603

FOR FURTHER DETAILS OF CRANKSHAFTS SEE DRG. N° 4329

PART NO.	DESCRIPTION	QTY	MATERIAL	REMARKS
8	SIDE WEB & JOURNAL	1	IS	FOR SECTION
7	" " " "	1	IS	AFTER
6	" " " "	1	IS	
5	" " " "	1	IS	
4	SIDE WEB & PIN	2	IS	
3	JOURNAL & WEBS	1	IS	
2	CENTRE CRANKPIN	4	IS	
1	CENTRE CRANKWEB	8	IS	



17935

ARRANGEMENT OF CRANK SHAFT.

RICHARDSONS WESTGARTH & CO LD.

ENG. NO 2676.

PALMERS S.B. & I CO LD.

M.V. NO 1005

M/V British Strength

West Hamlepool Report

No 14035

Nwc. Rpt. No. 87116.



© 2021

Lloyd's Register
Foundation

W12-0096