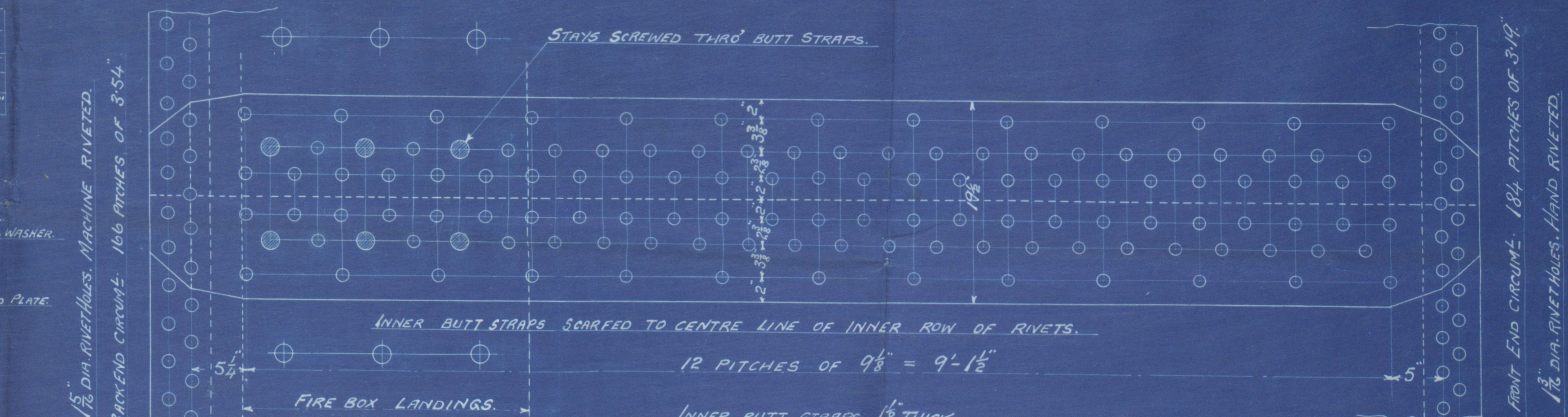
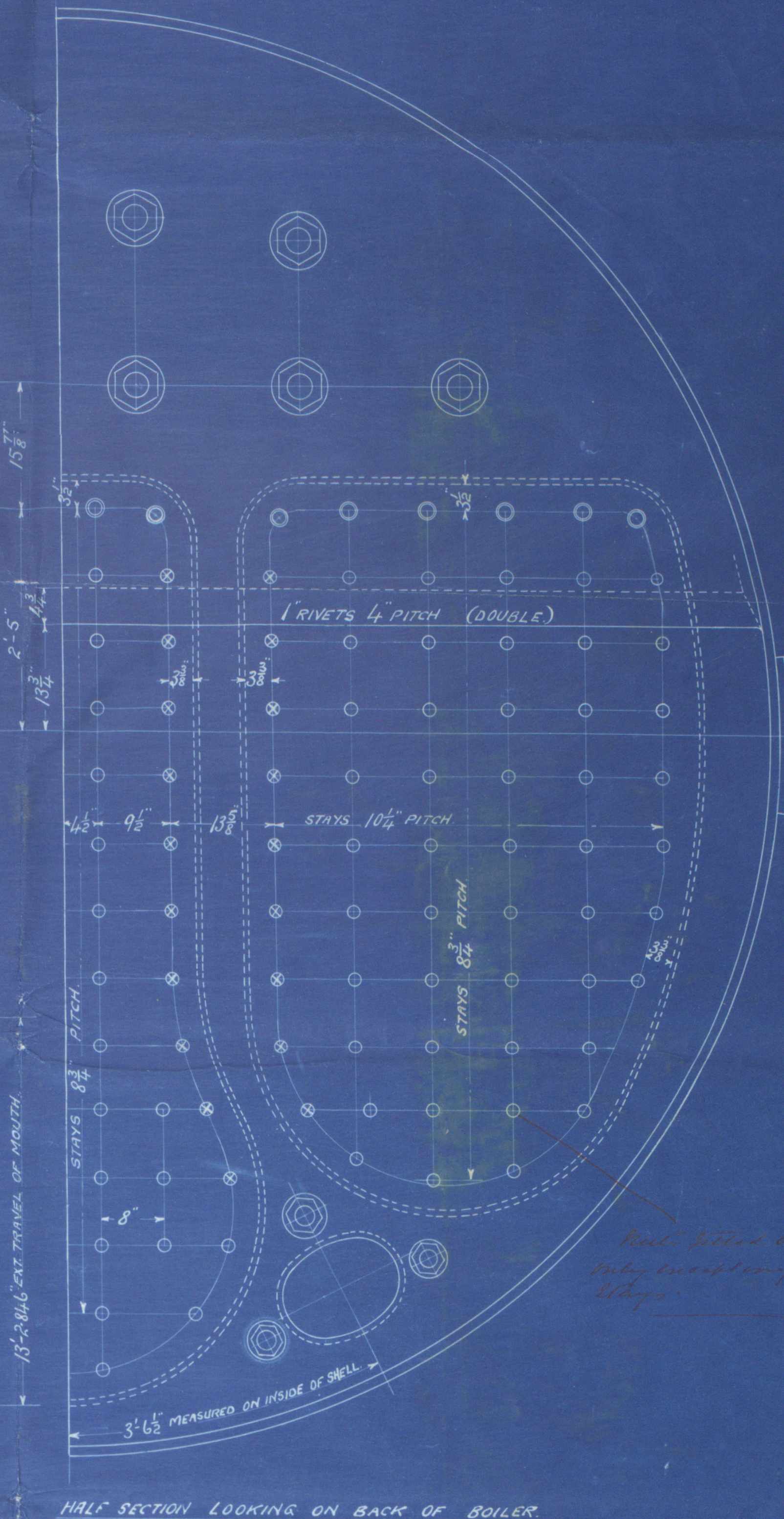
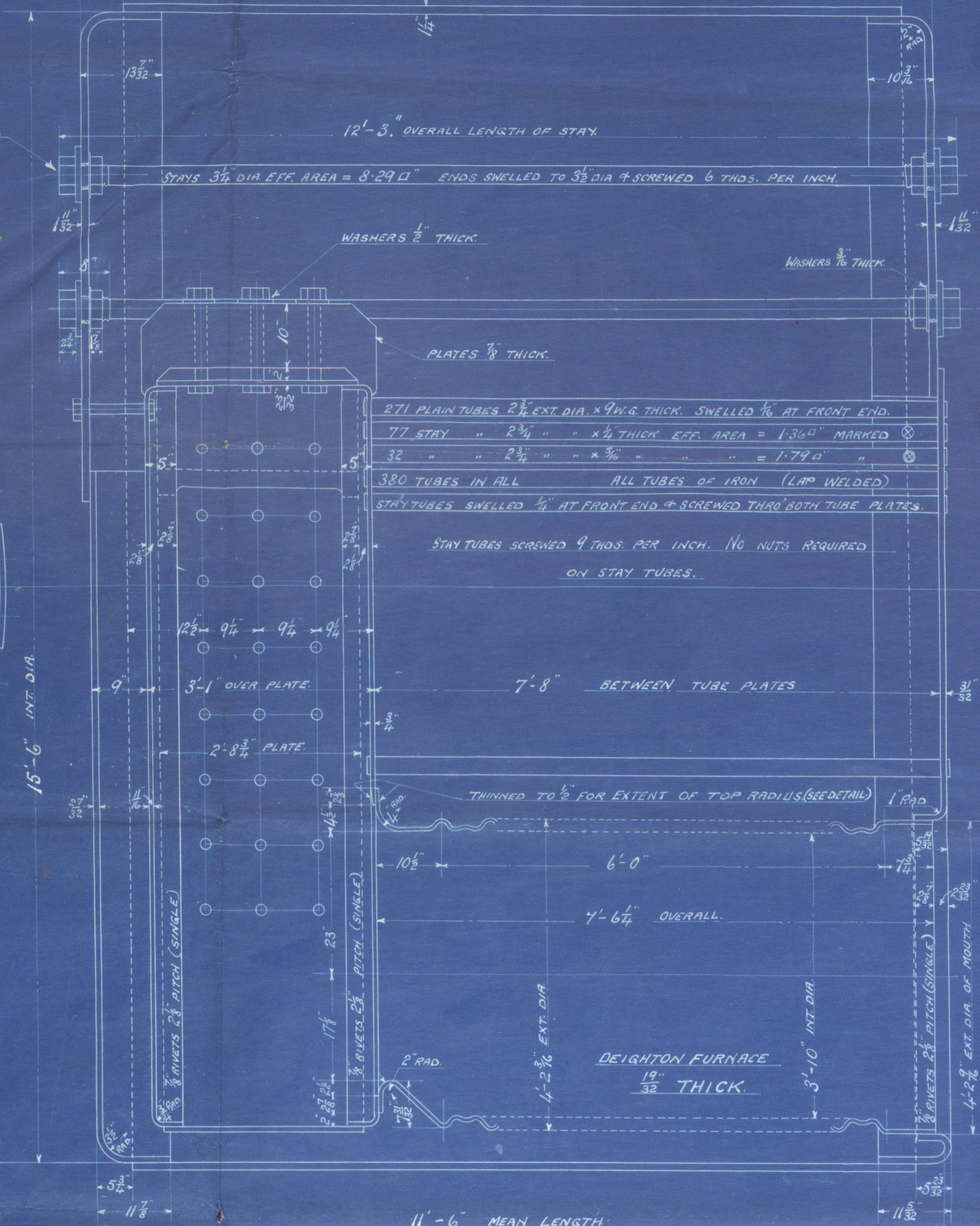
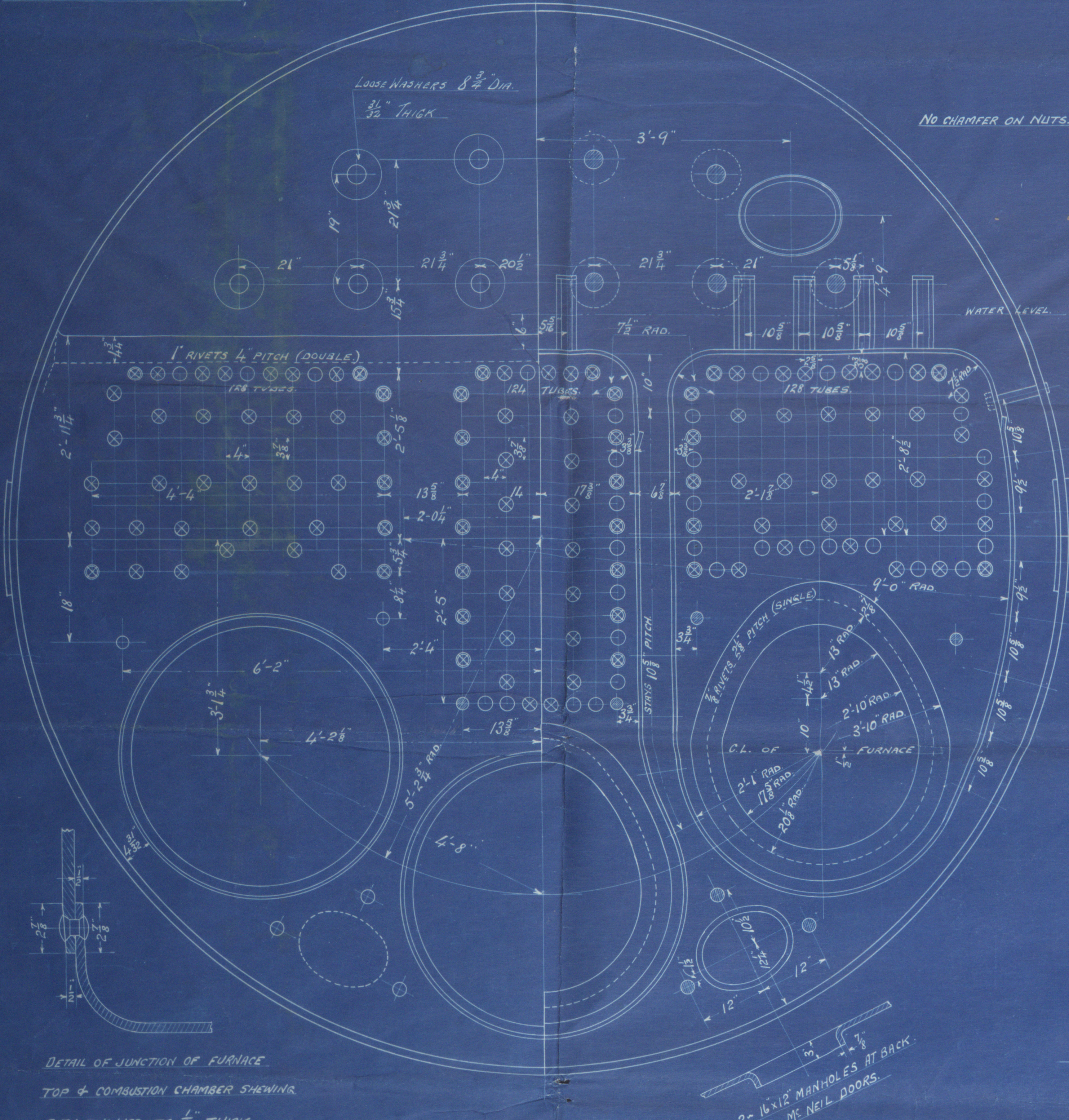
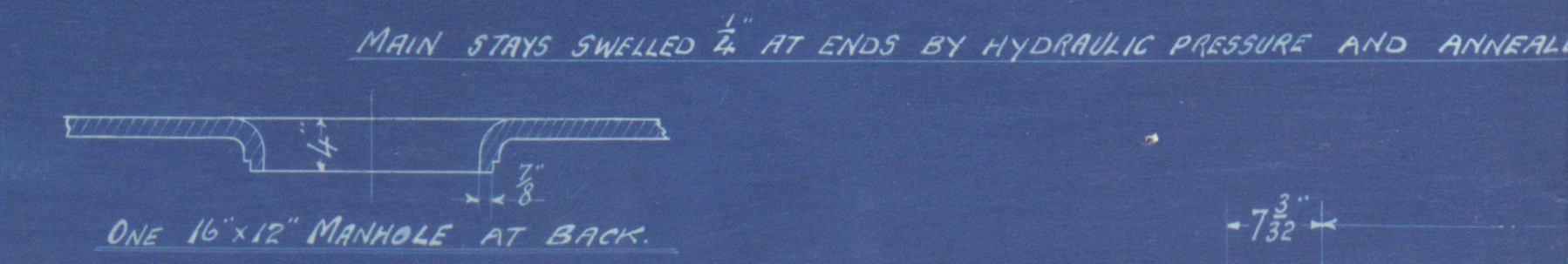


PARTICULARS OF SURFACES, ETC.		RIVETING.		LONGTH.		BACKING ON SHELLING OUT.	
TUBE SURFACE	2100 #	3 BOILERS	6300 #				
FIRE BOX SIDES AND TOP	158 "	174 "					
" " BACK	82 "	246 "					
" " TUBE PLATE	55 "	165 "					
FURNACES	161 "	483 "					
TOTAL HEATING SURFACE	2556 #	7668 #					
GRATE AREA (546" BARS)	63.3 "	190 "					
TUBE AREA	1165 "	3445 "					
WATER AREA	160 "	480 "					
STEAM SPACE	514 #	1542 #					
GRATE AREA HEATING SURFACE	1:404						
" " TUBE	1:33.2						
" " AREA	543:1						
" " WATER	1:2.52						
" " STEAM SPACE	1:8.1						
% BOILER ABOVE FIRE BOX	32.2						
WEIGHT OF WATER	267 TONS	774 TONS					

PARTICULARS OF MAIN STAYS.		POSITION.		DIA. STAY DIA. SCREW		NO. STAYS EFF. AREA	
STEAM SPACE STAYS	3 1/2"	3 1/2"	6	8.29 sq"			
MANHOLE TOP STAYS	2 1/2"	2 1/2"	6	4.90 "			
TUBE PLATE & MANHOLE SIDE STAYS	2 1/2"	2 1/2"	6	3.24 "			



ALL FIREBOX STAYS SCREWED THRU BOTH PLATES & NUT FITTED AT EACH END, EXCEPT STAYS FROM WING FIREBOX TO SHELL, WHICH PROJECT 3/8" AND ARE CAULKED. ALL 1/8" NUTS 1/4" DEEP EXCEPT ON GIRDER TOPS WHERE THE OUTSIDE NUTS ARE 1/8" DEEP.
ALL 2" & 2 1/2" NUTS 1/2" DEEP.



DETAIL OF JUNCTION OF FURNACE
TOP & COMBUSTION CHAMBER SHOWN
BOTH THINNED TO 1/2" THICK.
SCALE: 3"=ONE FOOT.

WORKING PRESSURE = 180 LBS. PER SQ. INCH.
TO PASS LLOYD'S SURVEY.

MAIN BOILER. — ENGS. NOS. 412-13-14-15.
3-OFF FOR EACH NO.
SCALE: 1" & 1/2" = 1 FOOT.



Card No. No 412-13-14 + 15-
180 lbs to P

Standard Ship
No 352-3-14 + 5
Corrupted Photo Paint
Showing

Marked to main ship 2 1/2
and increase in diam of C.C. ship

S.I. 5/4/17-

No 412

"War Ence" 01 No 352

"Brookley No Report No 17343.
Hill" No 413

ex "Burgondier" (No. 353).
No Report No 17453.

No 415

00 "War Anchoira"

No Report No 17407.



© 2021

Lloyd's Register
Foundation

W12-0074