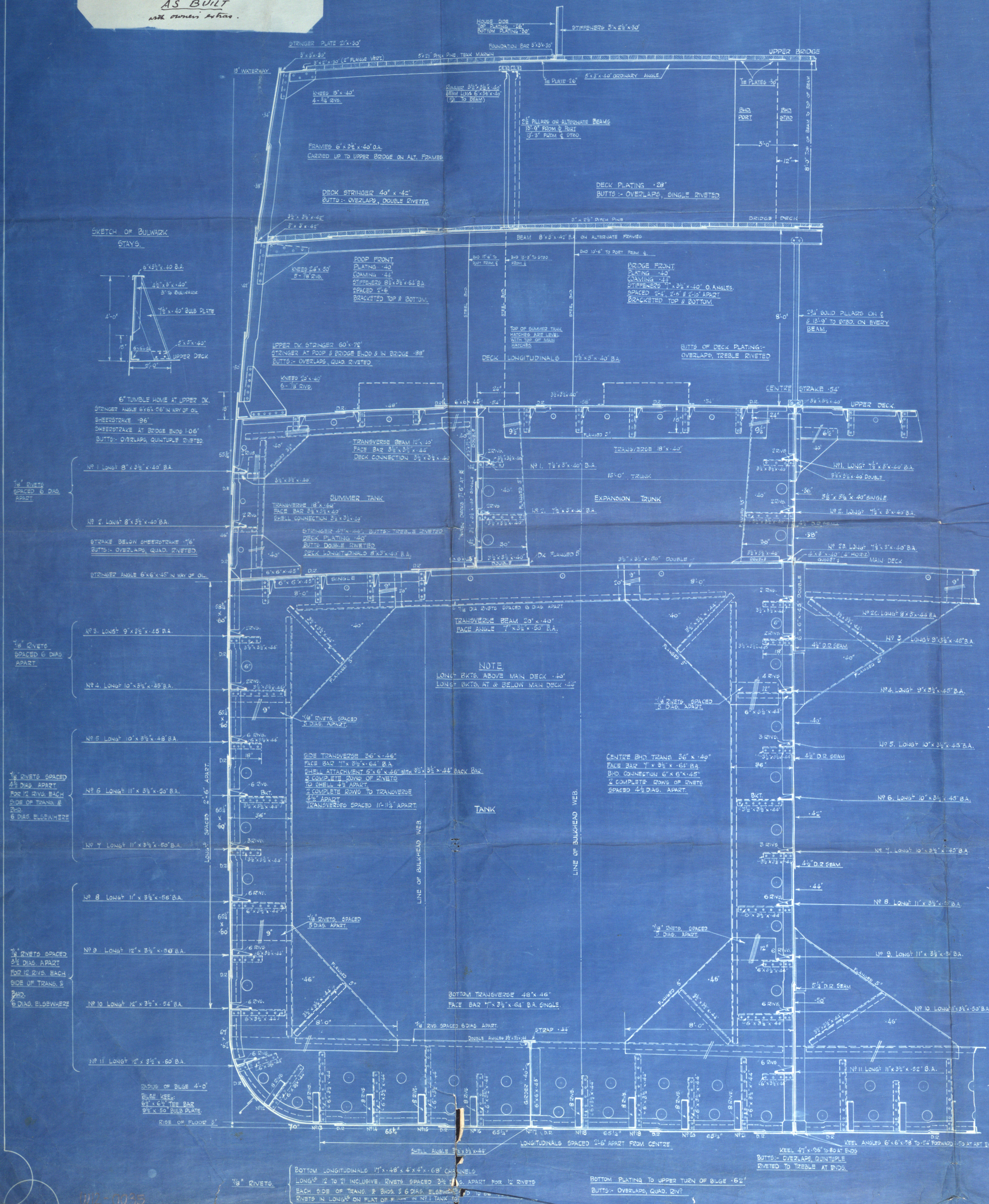


Nº931
S.S. "BRITISH SERGEANT"
AS BUILT
with Owners' Alterations.

SCALE: 1/2" = 1 FOOT.

MIDSHIP SECTION.

SECTION LOOKING FORWARD.



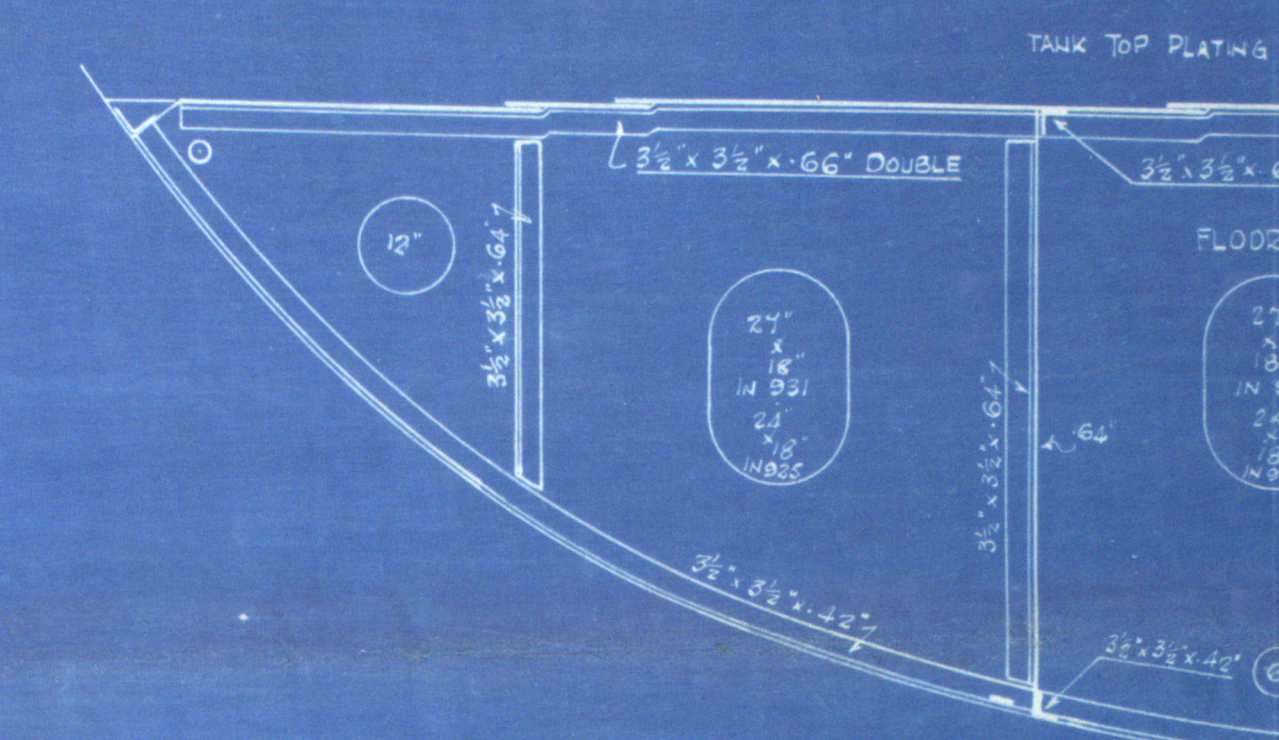
PRINCIPAL DIMENSIONS
LENGTH B.P. 400'-0" x 53'-9" BREADTH M.P. x 23'-0" DEPTH M.P. TO UPPER DECK
CLASS + 100 A.I. LLOYDS "RHENROD" SYSTEM (PATENT)

LLOYD'S NUMERALS	
BREADTH MOULDED	53.75
DEPTH MOULDED	33.00
LENGTH BETWEEN PERPS.	400.00
DEPTH TO LENGTH	24700.00
	12.12
	d = 22.7

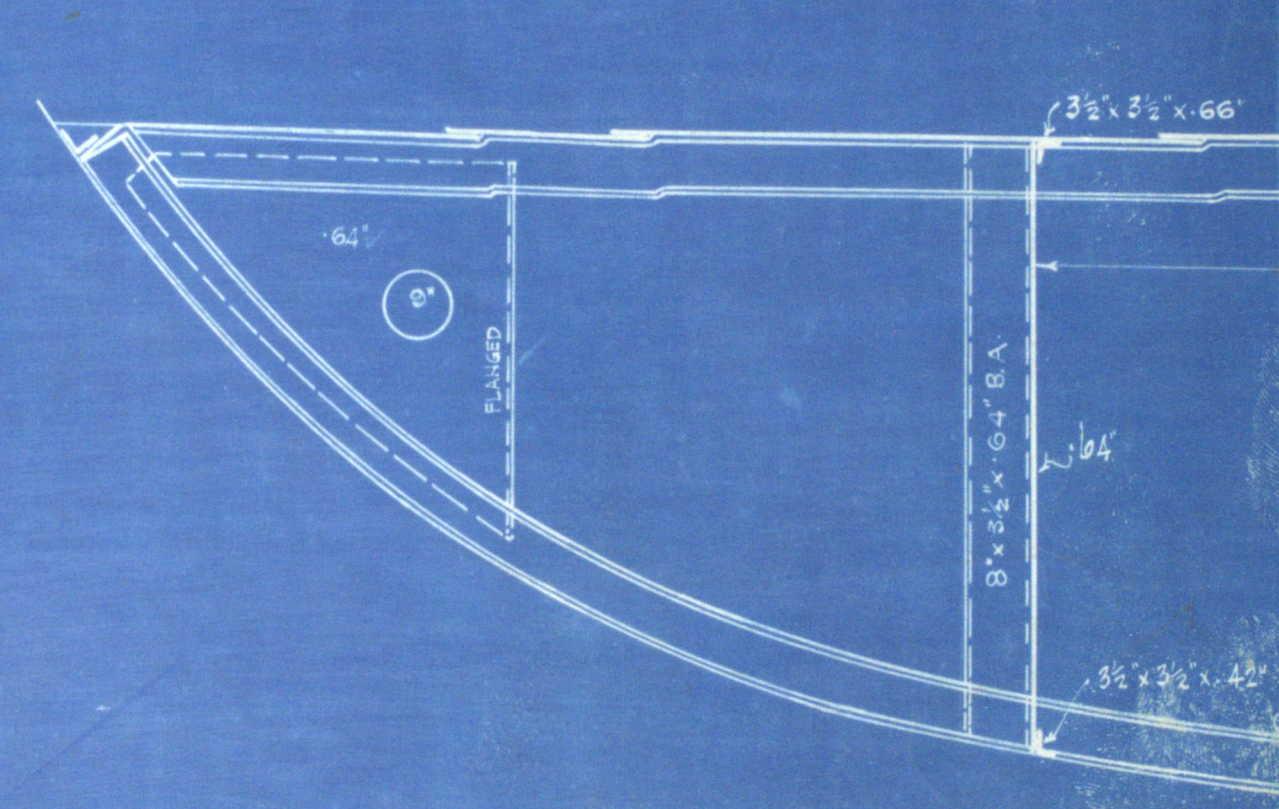
EQUIPMENT NUMBER = 26352	
1 STOCKLESS BOWER ANCHOR	10 1/2 CWT.
1 STOCKLESS BOWER ANCHOR	65 1/2 CWT.
1 STOCKLESS BOWER ANCHOR	54 1/2 CWT.
1 STREAM ANCHOR	17 1/2 CWT. EX. STOCK
2 1/2 FATHOMS STD CHAIN CABLE	2 1/2 DAV.
30 FATHOMS STEAM WIRE	4 1/2 DAV.
120 FATHOMS TONLINE	5' STEEL WIRE
2 MANILLA WARPS, 30 FATHOMS EACH	4 1/2 DAV.
2 MANILLA WARPS, 90 FATHOMS EACH	5' STEEL WIRE
FORGINGES	7'
STEEL BAR 10 1/2" x 2 1/2"	
STEEL POST 22 1/2" x 8"	22.5' x 8"
RUDER HEAD 11" DIAM.	

OWNERS' REQUIREMENTS (INCLUDED ON THIS PLAN)
SHEERSTRAKE INCLUDING THICKER PLATING IN WAY OF BRIDGE INCREASED 10' FOR
25' ABOVE CLASSIFICATION REQUIREMENTS.
SHOCK BRON SHEERSTRAKE INCREASED 10' FOR 25' ABOVE CLASSIFICATION REQUIREMENTS.
UPPER DECK STRONGER INCLUDING THICKER PLATING IN WAY OF BRIDGE & AHEAD INCREASED
10' FOR 25' ABOVE CLASSIFICATION REQUIREMENTS.
DECK CONTINUOUS STRONGER INCREASED 10' FOR 25' ABOVE CLASSIFICATION REQUIREMENTS.
STRONGER IN WAY OF BRIDGE INCREASED 10' FOR 25' ABOVE CLASSIFICATION REQUIREMENTS.
DECK PLATING IN WAY OF BRIDGE INCREASED 10' FOR 25' ABOVE CLASSIFICATION REQUIREMENTS.
200 INCREASED 10' ABOVE CLASSIFICATION REQUIREMENTS (7/16" IN ALL AREAS).
TANK TOP & FLOORS UNDER BOILERS 1/4" THICKER THAN REQUIRED BY RULE.

SOLID FLOORS UNDER BOILERS
AT FRAME 33



SKELETON FLOORS IN BOILER SP
AT FRAME 34



112-0035

Palmers Co

925, 931

935

937

Mid Section as built

931 "British Sergeant."

75651
C/S BRITISH SERGEANT.
NEWCASTLE ON TYNE.

Report No. 46051

C/S BRITISH PREMIER
NEWCASTLE ON TYNE.

Report No. 46244



© 2021

Lloyd's Register
Foundation

W12 - 0035