

Nº 613.

MIDSHIP SECTION

COMPLETE SUPERSTRUCTURE VESSEL.

LENGTH B.P. 412'0". BREADTH MLD 53'11 1/2" DEPTH MLD 28'8" TO 2'0" DK.

CLASS 100A.I. WITH FREEBOARD.

SCALE 1/2" TO 1 FT.

NOTE:-

ALL CHANNELS & BULB ANGLES TO NEW BRITISH STANDARD SECTIONS.

NUMERALS.

DEPTH D. FOR PROPORTIONS WITH 8'6" SHELTER DK. = 37'47" FEET.
STANDARD HEIGHT FOR SHELTER DK. 8'0".
DEPTH D. FOR SCANTLING 36'67"
DEPTH d 25'06"

1ST LONGITUDINAL NUMERAL.

$$L \times D = 411.50 \times 36.67 = 15089.17$$

2ND LONGITUDINAL NUMERAL.

$$L \times (B+D) = 411.5 \times (53.96 + 36.67) = 37294.24$$

PROPORTIONS

$$\frac{L}{D} \text{ Upper } \frac{411.5}{37.17} = 11.07$$

EQUIPMENT NUMERAL.

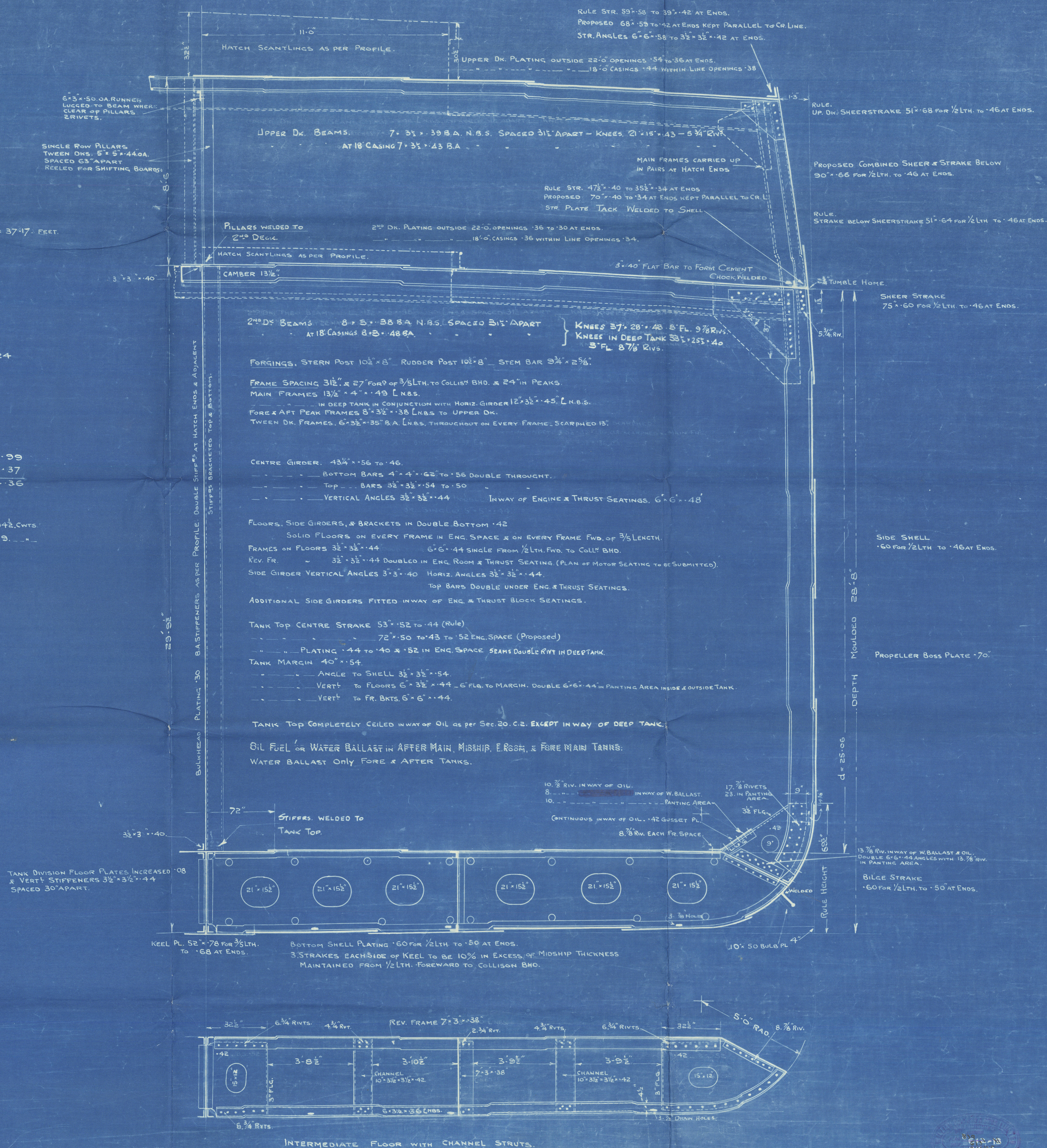
$$L (B+D) 411.5 \times (53.96 + 37.17) = 37499.99$$

$$\text{DECK HOUSES \& CASINGS } 70.5 \times 7.5 \times \frac{1}{2} = 264.37$$

$$\underline{37764.36}$$

EQUIPMENT Letter, d†

3. BOWER ANCHORS STOCKLESS COLL. WHT. 194 1/2 CWTs.
1. STREAM. EX STOCK 19.
- 270 FMS. 2" TAYCO. STUB LINK CABLE.
- 90 FMS. 5" SWR. STREAM LINE
- 120 FMS. 4 1/4" TOWLINE
2. 90 FMS. 2 3/4" HAWSERS
2. 90 FMS. 2 1/2" WARPS



812-13
10/7/23

W1197-0163

M. V. "Kunro"

Messrs Duford & Co 613.

Middlesex Section
As built

SUNDERLAND

NO. 31608

RETAILED

RETAILED



© 2020

Lloyd's Register
Foundation