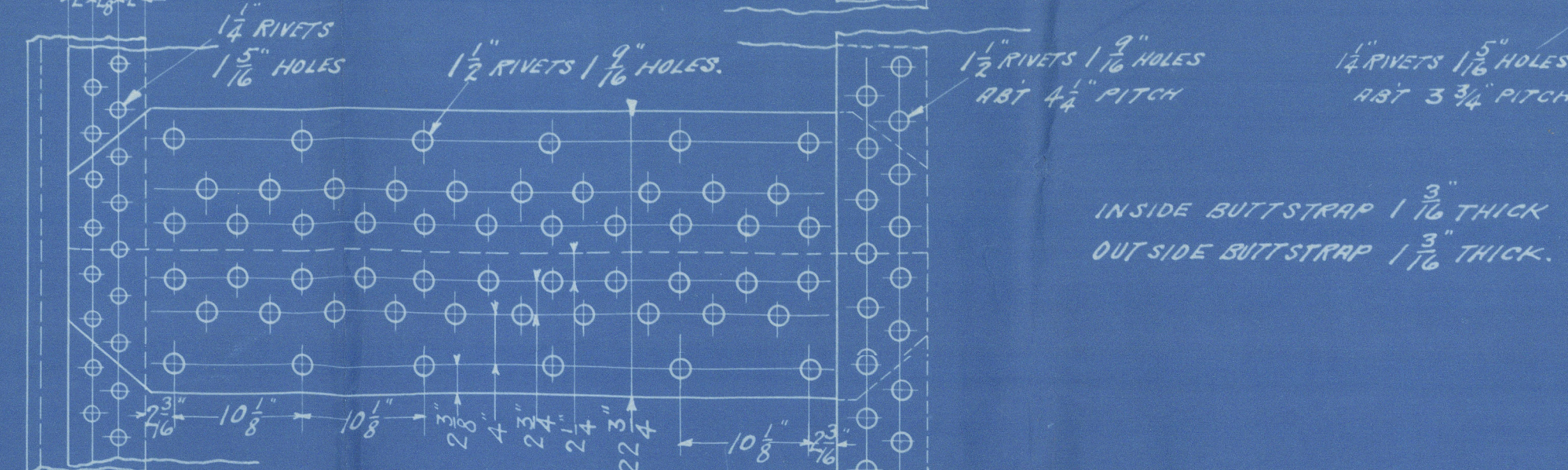


20/5/16

BUREAU OF COMMERCE  
 PLATE  $\frac{1}{2}$  " 10.125 - 1.5625 x 100 = 84.4 %  
 10.125  
 RIVET  $\frac{1}{2}$  " 5x1.75 x 1.75 x .85 = 102 %  
 10.125 x 1.375  
 LLOYDS RULE  
 PLATE  $\frac{1}{2}$  " 10.125 - 1.5625 x 100 = 84.4 %  
 10.125  
 RIVET  $\frac{1}{2}$  " 5x1.75 x 1.75 x .85 = 94 %  
 10.125 x 1.375

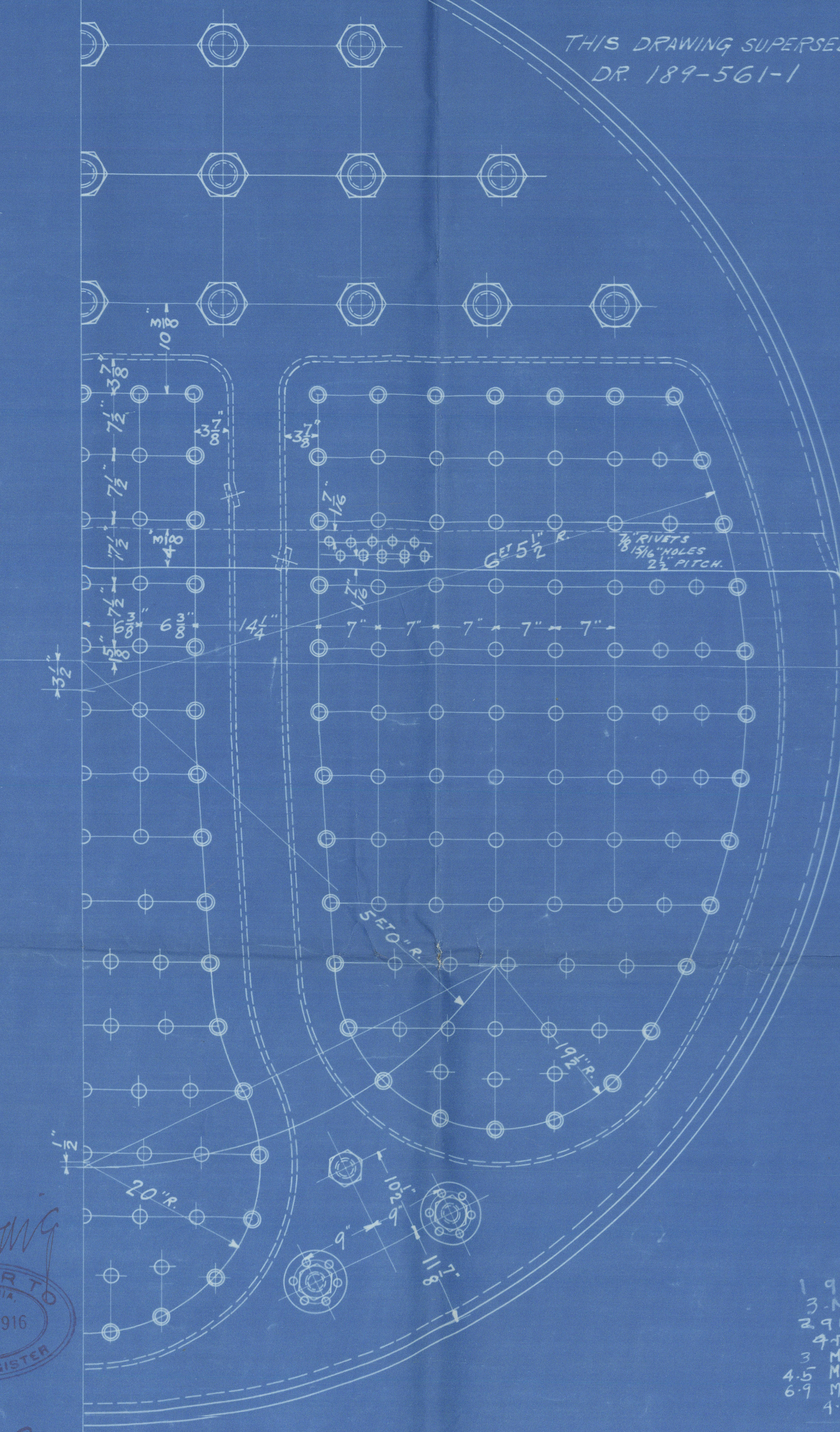
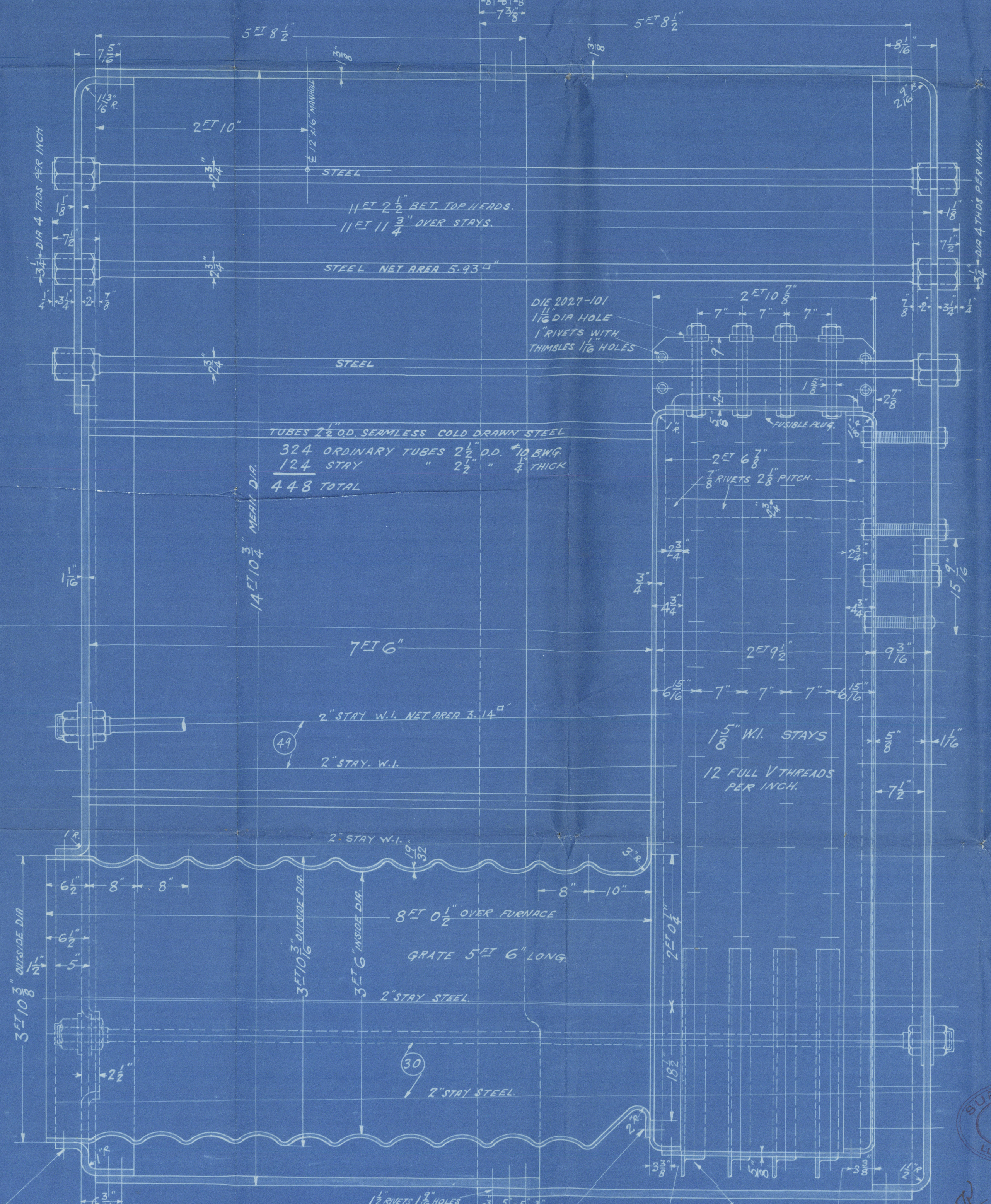


| CONSTRUCTED UNDER THE RULES OF BUREAU OF SUPERVISING INSPECTOR'S DEPT. OF COMMERCE & LLOYDS REGISTER FOR 1901.55 WORKING PRESSURE |           |                             |                          | ALTERATIONS              |                 | DATE | APP'D |
|---|-----------|-----------------------------|--------------------------|--------------------------|-----------------|------|-------|
| DESCRIPTION   | THICKNESS | U.S. RULES                  | LLOYDS RULES             | BOILER DATA - ONE BOILER | HEATING SURFACE |      |       |
| SHELL   | 1/2"      | P. 63000/1.375 = 20% = 193" | P. 21212/1.375 = 206"    |                          |                 |      |       |
| FURNACE   | 3/4"      | P. 12900/1.375 = 210"       | P. 12571/1.375 = 204"    | TUBES                    | 2194.1 #        |      |       |
| TOP HEAD PLATE  | 1/2"      | P. 175x18 = 196"            | P. 175x18 = 217"         | FURNACES                 | 1494 #          |      |       |
| STAYS   | 3/4"      | S. 17x15.25x190 = 8293"     | P. 10400x5.939 = 238"    | CUMBER CHAMBER           | 220 #           |      |       |
| PIPE PLATE  | 3/4"      | P. 315x2.33x17000 = 235"    | P. 315x2.33x17000 = 253" | BACK TUBE PLATE          | 46 #            |      |       |
| C.C. CROWN PLATE  | 5/8"      | P. 135x10 = 240"            | P. 135x10 = 256"         | TOTAL H.S.               | 2614.5 #        |      |       |
| C.C. CROWN STAYS  | 5/8"      | S. 25x7x190 = 5888"         | P. 6000x1.694 = 193"     | GRATE SURFACE            | 57.75 #         |      |       |
| C.C. WRAPPER PLATE  | 5/8"      | P. 135x10 = 256"            | P. 135x10 = 263"         | H.S.                     | 45.3            |      |       |
| C.C. WRAPPER STAYS  | 5/8"      | S. 125x7x190 = 5692"        | P. 6000x1.694 = 200"     | CALORIMETER              | 11.5 #          |      |       |
| C.C. BACK PLATE   | 5/8"      | P. 135x10 = 240"            | P. 135x10 = 256"         | G.S.                     | 5               |      |       |
| C.C. BACK STAYS   | 5/8"      | S. 25x7x190 = 5888"         | P. 6000x1.694 = 193"     |                          |                 |      |       |
| CROWN GIRDERS   | 7/8"      | P. 21212x1.375 = 213"       | P. 1155x1.375 = 252"     |                          |                 |      |       |
| WIDE WELDED SHEET PILE HEAD   | 1 1/2"    | P. 140x17 = 222"            | P. 140x17 = 222"         |                          |                 |      |       |

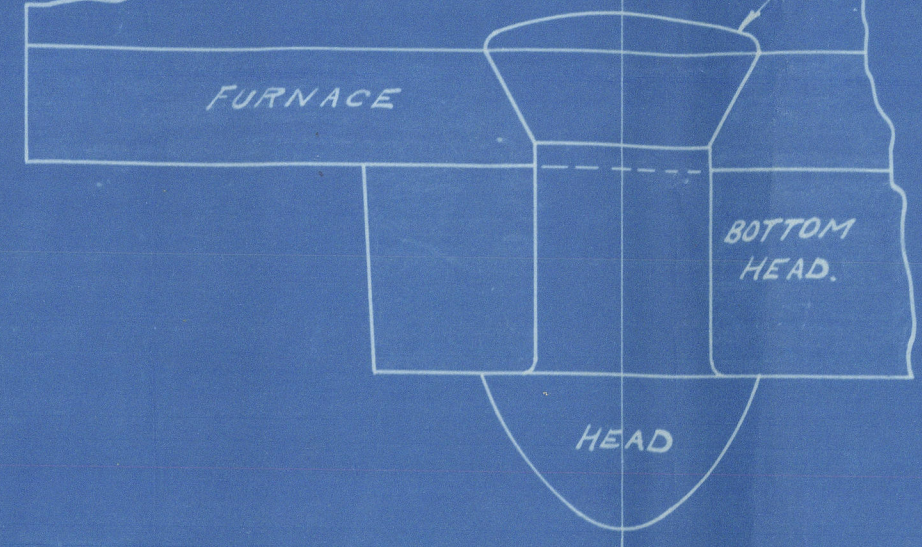
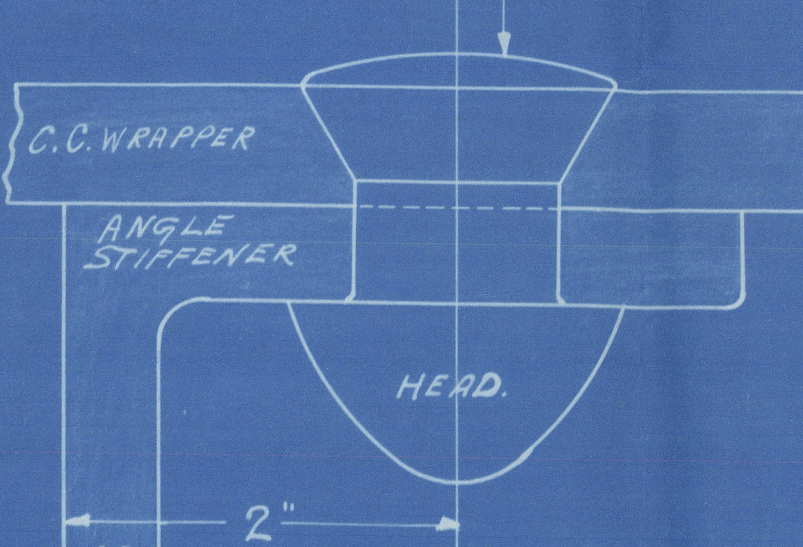
TENSILE STRENGTH OF SHELL PLATES & GIRDERS 63000 TO 71680 LBS.  
 " FLANGE " 58240 TO 67200 LBS.  
 WORKING PRESSURE 190 LBS PER SQ. INCH  
 WATER TEST " 285 " " "  
 EVAPORATION 270 LBS. OF WATER PER SQ. FT. OF GRATE PER HOUR  
 TWIN SAFETY VALVE COMBINED AREA OF 4 1/2" DIA.  
 FOR DETAILS OF BOTTOM HEAD STAYS  
 SEE DR. 189-561-3

2-BOILERS AS DRAWN  
 1-BOILER TO OTHER HAND.

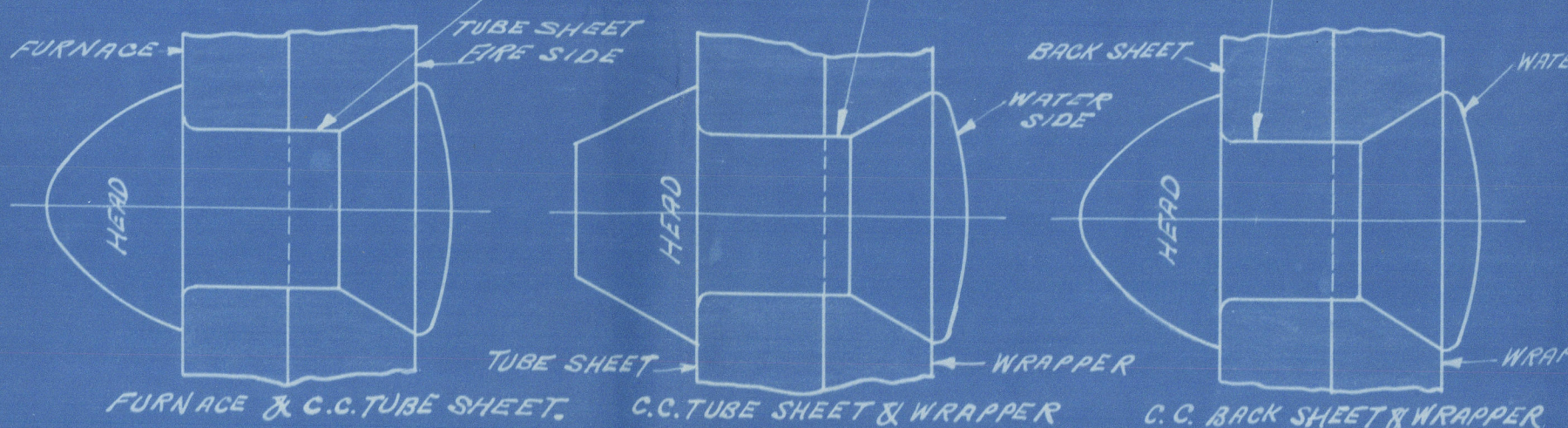
THIS DRAWING SUPERSEDES  
 DR. 189-561-1



LAP IN MIDDLE CIRCUMFERENTIAL SEAM, TRIPLE RIVETED FOR THIS LENGTH.



ALL CHILKING EDGES OF BOILER PLATE TO BE MACHINE PLANED, SEAMS, BUTTS, AND LAPS TO FIT CLOSELY DRAWN UP, METAL TO METAL, AND AFTER BEING RIVETED CALKED INSIDE AND OUTSIDE.



APPROVED  
 MAY 6 - 1916  
 LLOYDS REGISTER

ALL SCREW STAYS W.I.  
 SCREW STAYS ON BACK HEAD MARKED THUS  
 2" DIA. NUTS 1 1/2" DEEP IN C.C. & BACK HEAD  
 NET AREA = 2.671"  
 SCREW STAY ON BACK HEAD MARKED THUS  
 1 1/2" DIA. NUTS 1" DEEP IN C.C. NO NUTS ON BACK HEAD. NET AREA = 1.694"  
 WRAPPER SCREW STAYS 1 1/2" DIA. NUTS 1" DEEP  
 GIRDER SCREW STAYS 1 1/2" DIA. NUTS 1 1/2" DEEP  
 ALL SCREW STAYS HAVE 12 FULL V-THREADS PER INCH.  
 ALL SCREW STAYS TO HAVE 1/8" HOLE DRILLED 3" BEYOND INNER SURFACE OF PLATE

ENGINE DEPARTMENT.  
 TITLE 142103 MERN DIRX 11/2\"/>



W1188-0063

Nº 189

PHILADELPHIA

NEW YORK SHIPBUILDING CO.

3 MAIN BOILERS

W.P. 190 lbs.

OK

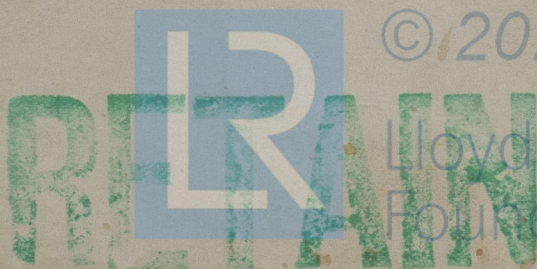
Nº 132

LLOYD'S TEST

285 lbs

9.6.17 A.T.F.

s/s "Gulfland"  
London Approved Phl 2883.



© 2020

Lloyd's Register  
Foundation



NEW YORK SHIPBUILDING CO.  
CAMDEN, N. J., U. S. A.  
BLUE PRINT ROOM

Print No. 8

Made MAY 3 1916

For Dep't MAIL

W1188-0063 © 2020

Lloyd's Register  
Foundation