

Nos 980, 1001 & 1002

MIDSHIP SECTION

SCALE 1/2 INCH - ONE FOOT

Dims 430'-0" x 62'-0" x 37'-9" TO SHELTER DECK

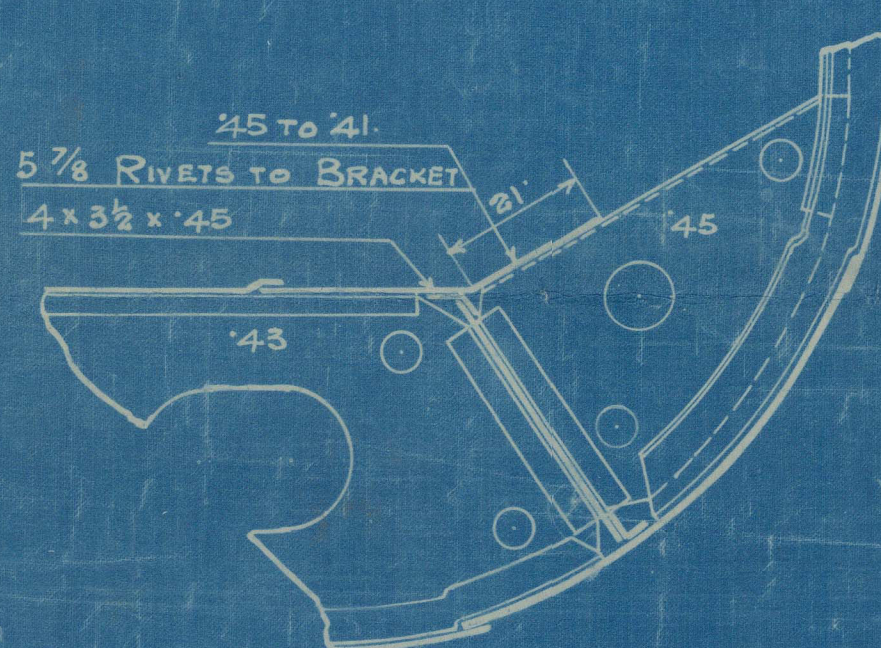
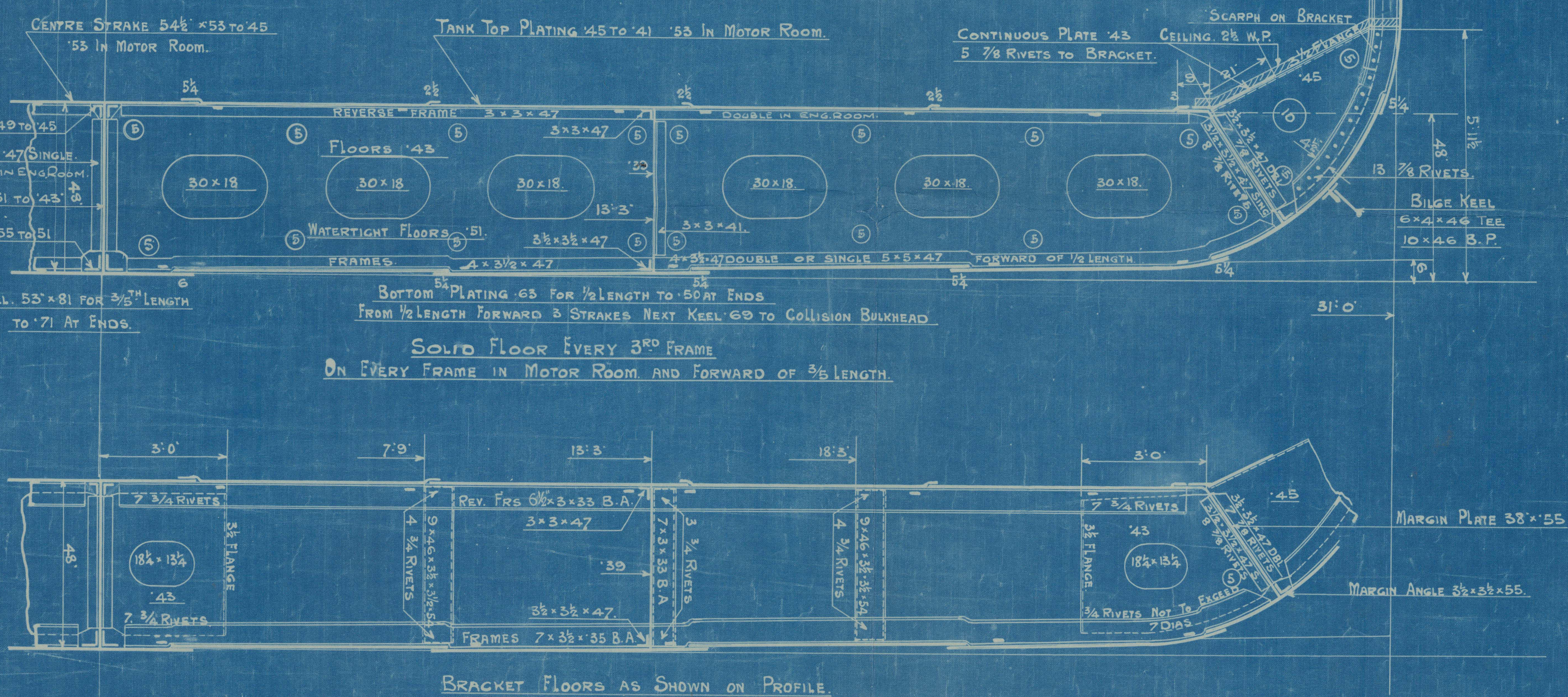
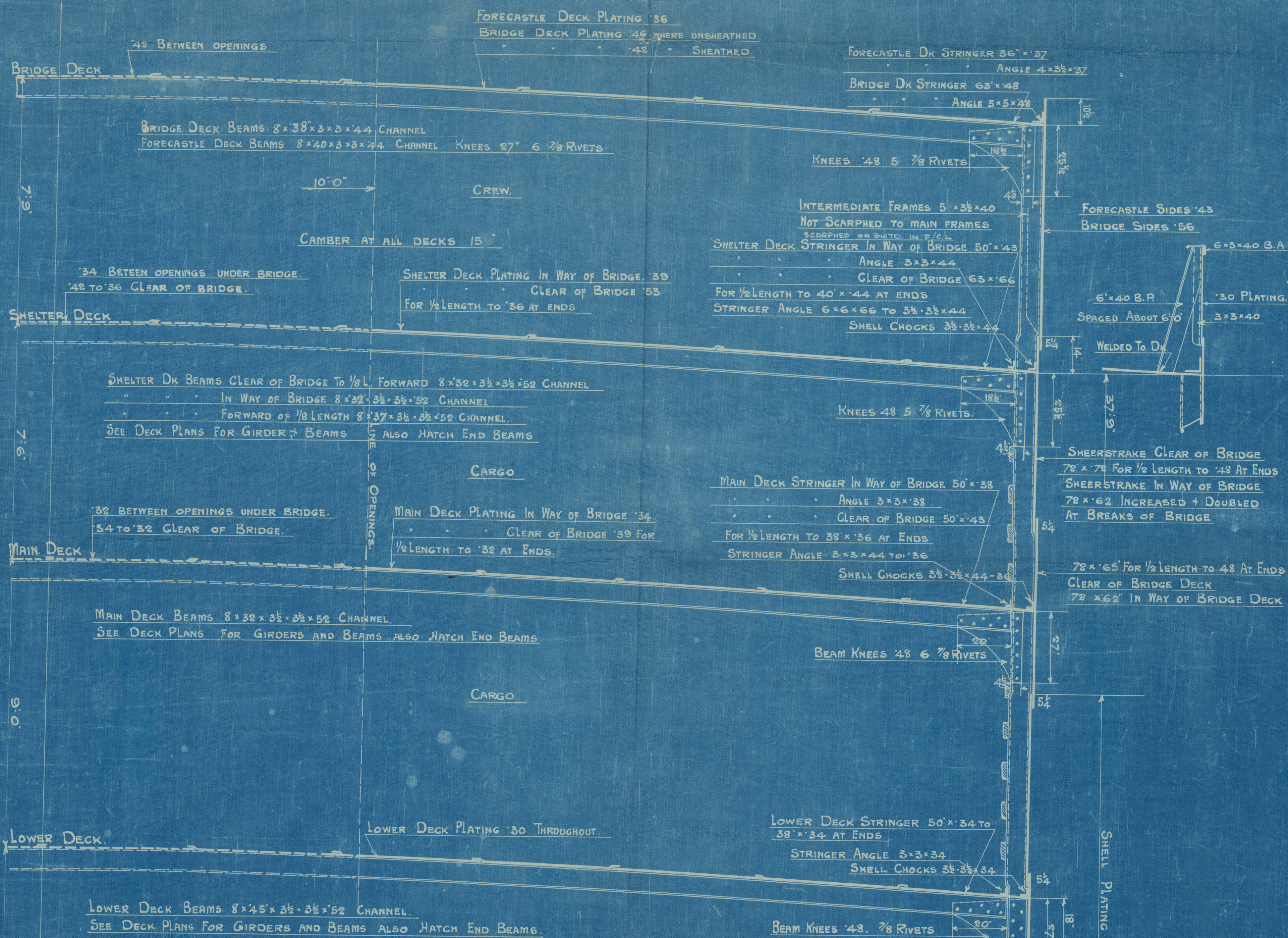
TO CLASS 100 A.I. WITH MAXIMUM LOAD DRAFT FOR A COMPLETE SUPERSTRUCTURE VESSEL

ALL SECTIONS N.B.S.

HAVING TONNAGE OPENING AFT

NUMERALS.
L x D 430 x 38 25 164 47 1" Long No.
L x (B+D) 430 x (62 + 38 25) 431 07 2" Long No.
1/2 TO SHELTER DECK 430 x 37 75 11 39
1/2 TO BRIDGE DECK 430 x 45 5 9 45
d. 17' 25."

EQUIPMENT Ct.
3 BOWER ANCHORS 7 3/4 CWTs STOCKLESS
1 STREAM 22 Ex STOCK
300 FTHS 2 1/2" STUDD CHAIN CABLE
120 5" STEEL WIRE STREAM (6x12)
130 5/4" TOWLINE (6x24)
2 @ 100 FTHS 2 3/4" STEEL WIRE OR 8 HEMP (HAWSEYS)
2 @ 100 2 3/4" (WARPS)



ALTERNATIVE ARRANGEMENT OF MARGIN.
THIS ARRANGEMENT FITTED.

1918

M.V. DEVIS

HARLAND & WOLFF LTD.
BELFAST

No. 1002

TITLE. MIDSHIP SECTION

(as built)

DATE APPROVED. —

RETAIN



© 2020

Lloyd's Register
Foundation

W1187-0145