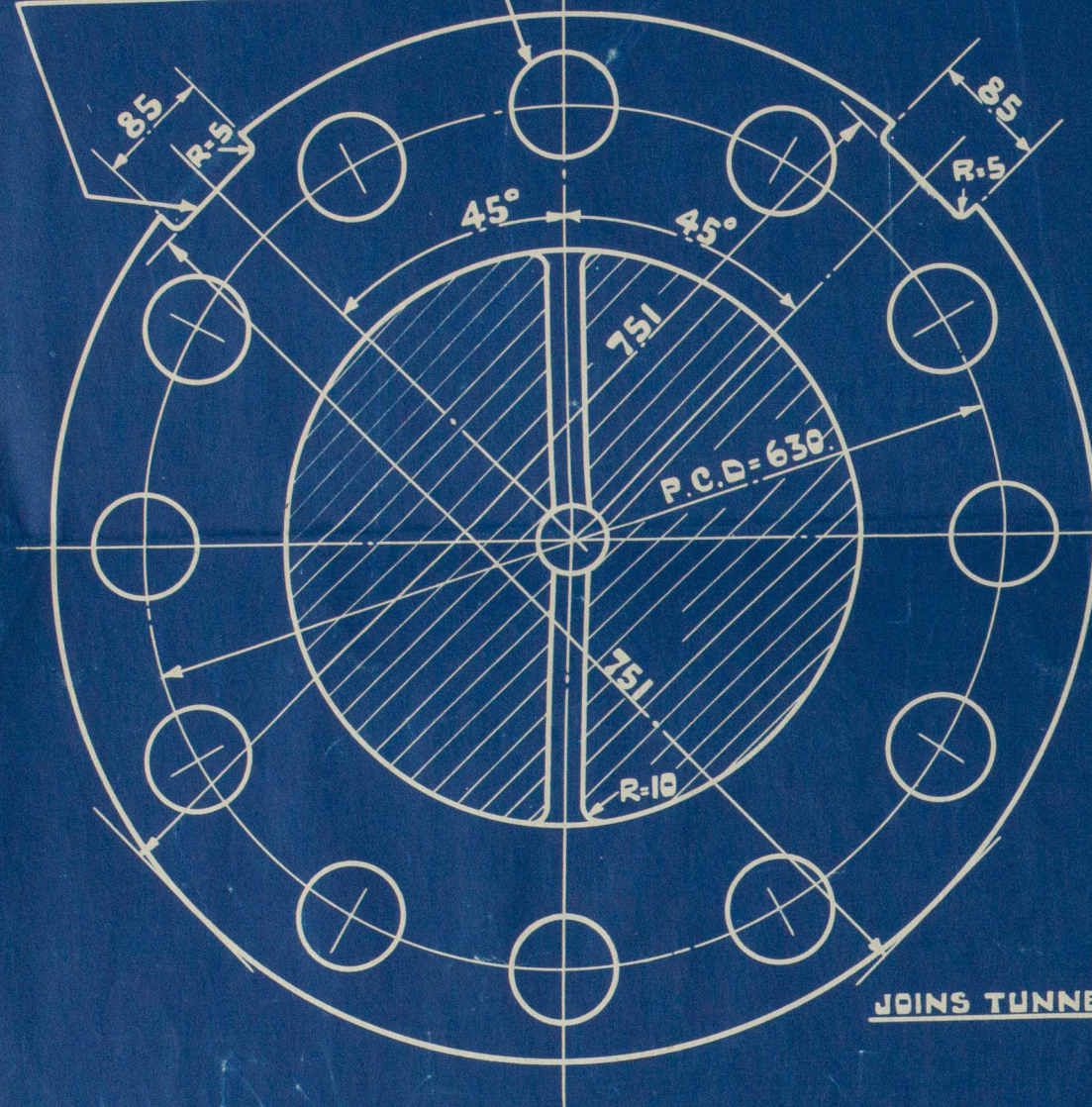


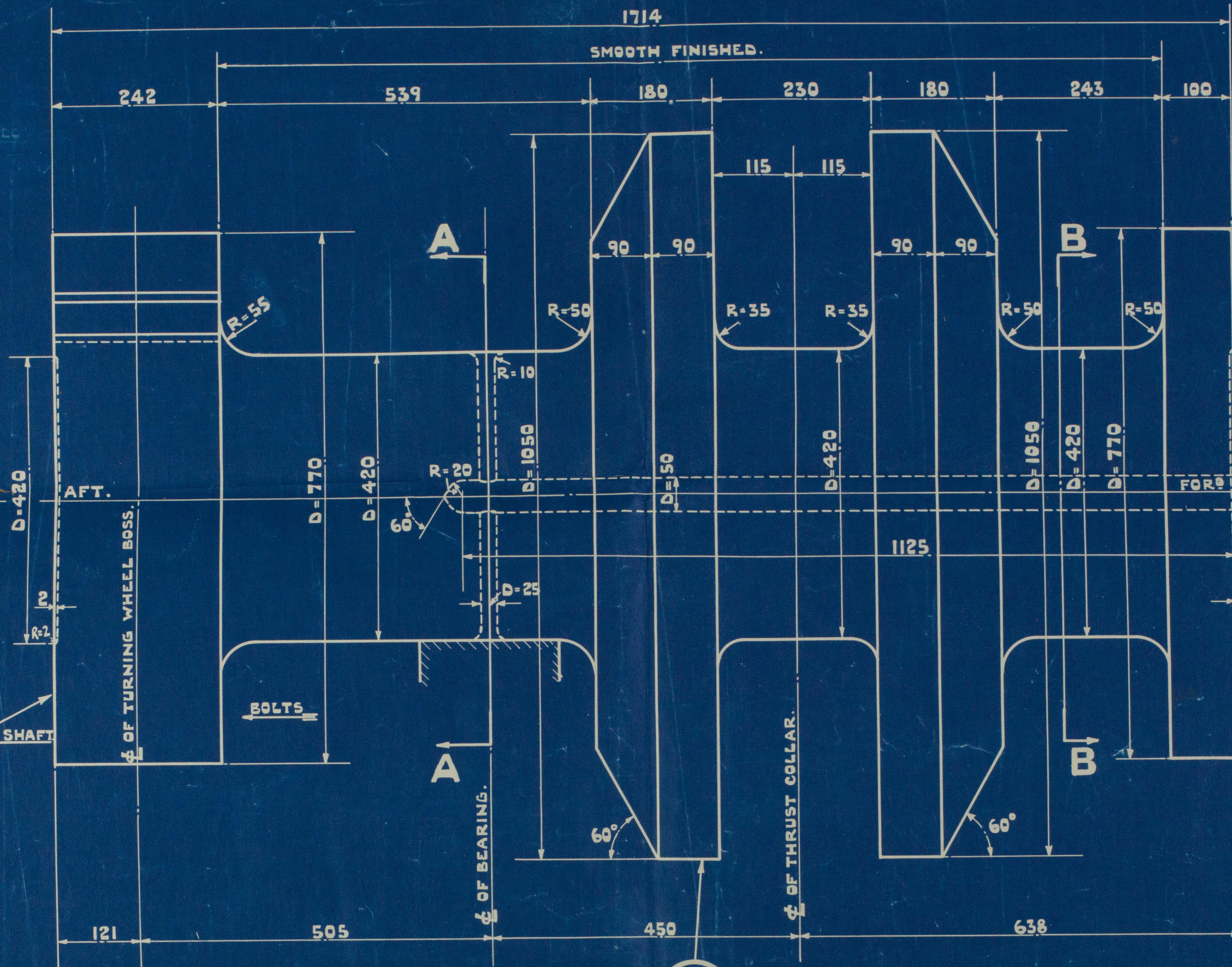
12 HOLES FOR FITTED BOLTS
75 M/M AT JOINT. NOT TO BE SPOT-FACED.
BOLTS TO BE DRIVEN IN FROM FORW
SEE DETAIL C.

169149

KEYWAYS PARALLEL
TO AXIS OF SHAFT.



SECTION A A.



12 HOLES FOR FITTED BOLTS
75 M/M AT JOINT. NOT TO BE SPOT-FACED:
FOR DETAIL SEE CRANKSHAFT
DRG. NO 56357.

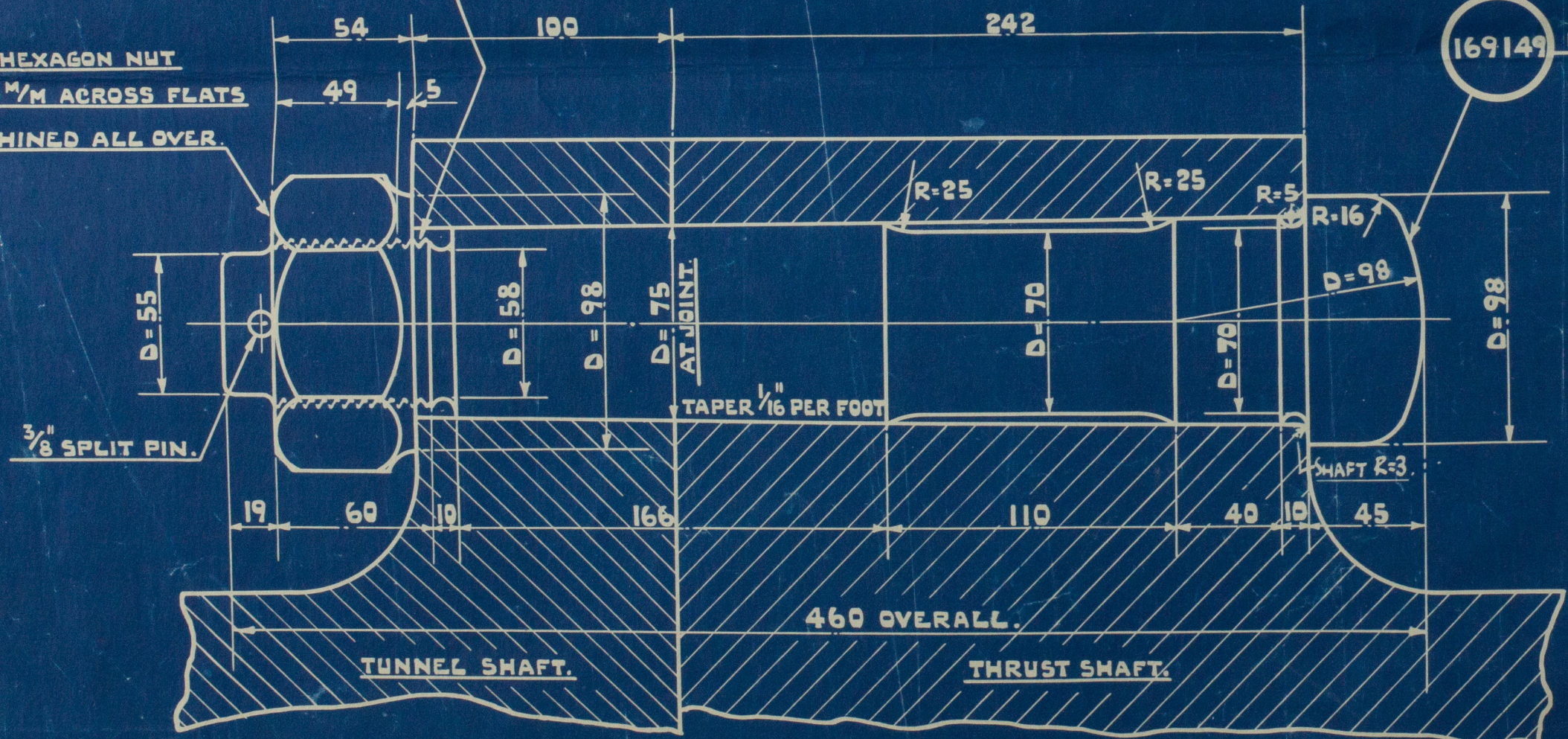
HOLES TO BE ROUGH BORED
AFTERWARDS REAMED
WITH CRANKSHAFT.



SECTION B B.

36492

2 1/2" HEXAGON NUT
98.6 M/M ACROSS FLATS
MACHINED ALL OVER.



DETAIL C.

169148

MACHINED ALL OVER.

169149

MACHINED ALL OVER.

NEWELL STANDARD LIMITS TO BE USED.

NO OFF PER ENGINE	DESCRIPTION	PATTERN NUMBER	MATERIAL	WT. IN KGS	REMARKS	SHOP	SK. NO OF JIG.
1	THRUST SHAFT.	169148	SIEMENS MARTIN STEEL	4300			
12	COUPLING BOLT.	169149	M.S.S.	15			
12	NUT FOR COUPLING BOLT.	36492	WRST IRON	2.4			
12	3/8" SPLIT PIN.		STEEL.		STOCK.		

D. A. 5 & 6 ⁵³⁰/₁₂₅₀ 2C.

THRUST SHAFT.

SCALE:- 1:2 & 1:5.

CODE NO 0532.

57554.

SA
29/1/38
Duplicate of Yard No 980

THRUST SHAFT TO BE OF SIEMENS-MARTIN
STEEL 28-32 TONS TENSILE TO THE SURVEY
AUTHORITIES' REQUIREMENTS, TESTS, AND
INSPECTION.

S.W. Underwood
R. W. Lyon
26-9-36

HARLAND & WOLFF LTD.
BELFAST

No. 1002

TITLE Thrust Shaft

DATE APPROVED 19.1.38

as for No 1001 approved 20.2.37

Davis

GEN BOX NO 121

PETAIN



© 2020

Lloyd's Register
Foundation