

33

HARLAND & WOLFF LTD.
BELFAST

No. 3 1078-1081

TITLE Steel Deck

DATE APPROVED 18. 4. 40

RETAIN

Abv 1158, 1159, 1164

1079 Belfast Report No
1088 Belfast Report No
1080 " "

13343 -

Empire Spence



13221 -

Dunsdale

13381 Empire Chapman

13305 Empire Fleetley

13456 Empire Beaulieu

1159

13570 Empire Indursting

1164

13417 " Benefit

1189

13560 " Dravner.

W1122 - 0122

6/8511 en

RETAIN



© 2019

Lloyd's Register
Foundation

18 APR 1940

N^{os} 1078-9-80-1 & 1083^G.

PLAN OF STEEL DECKS.

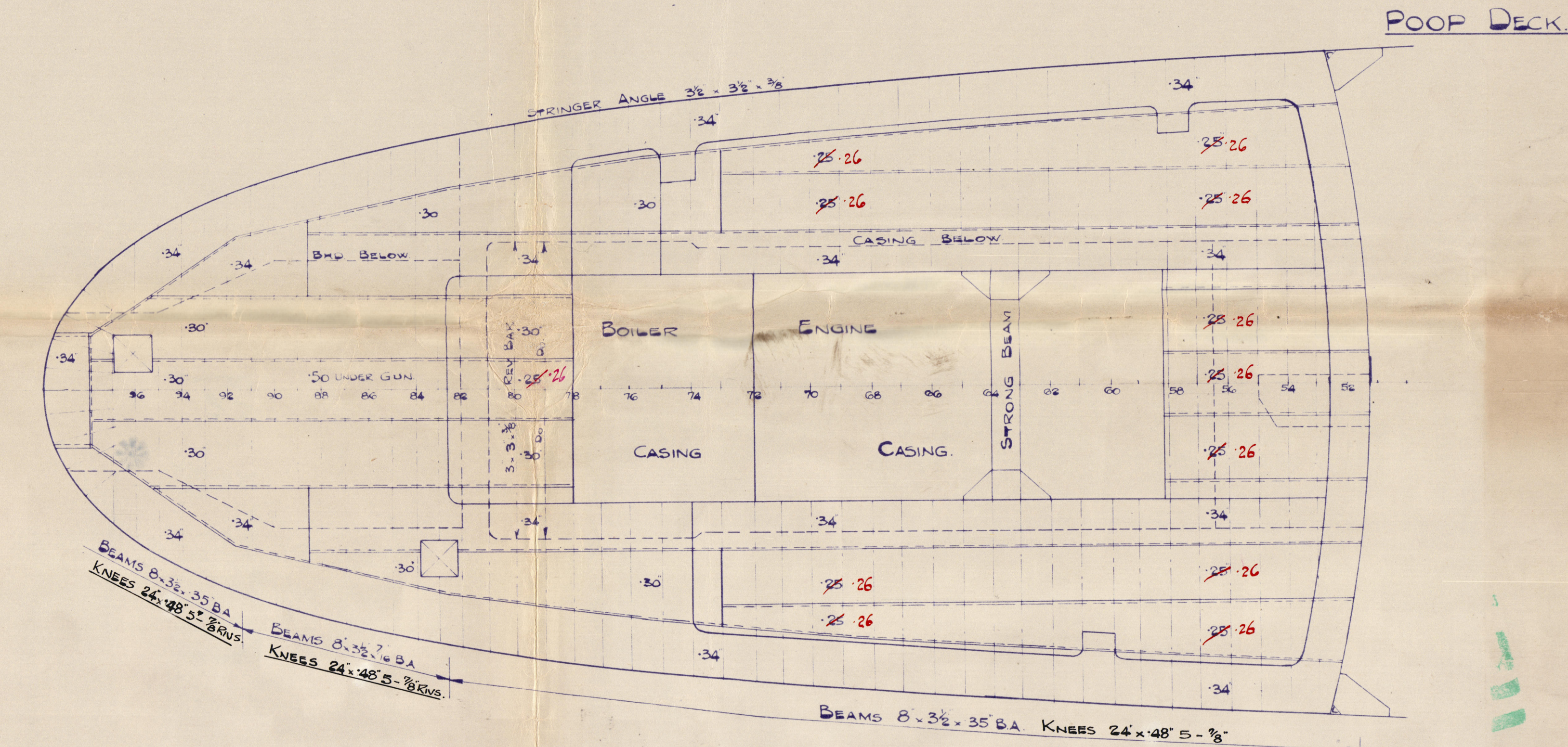
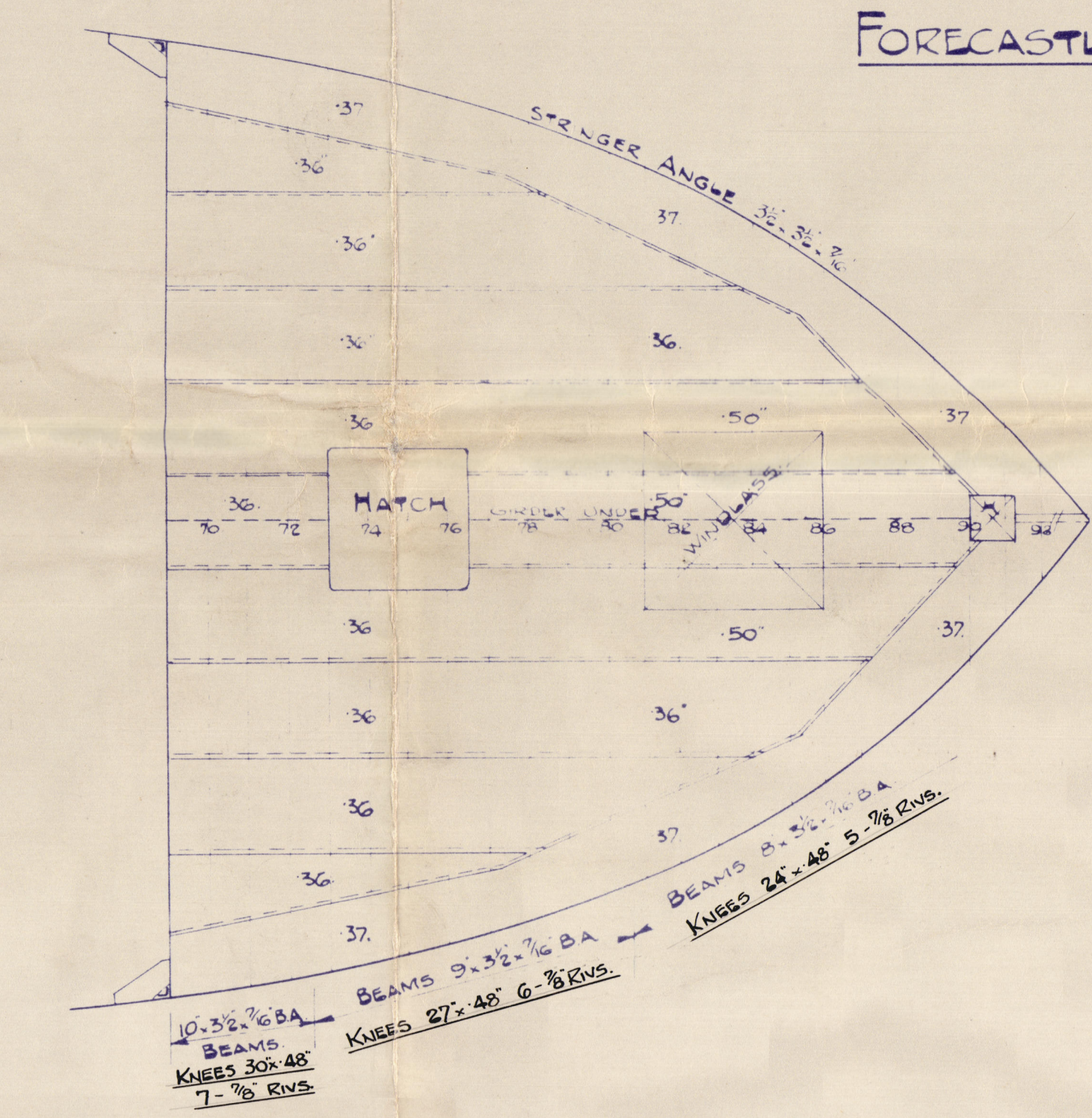
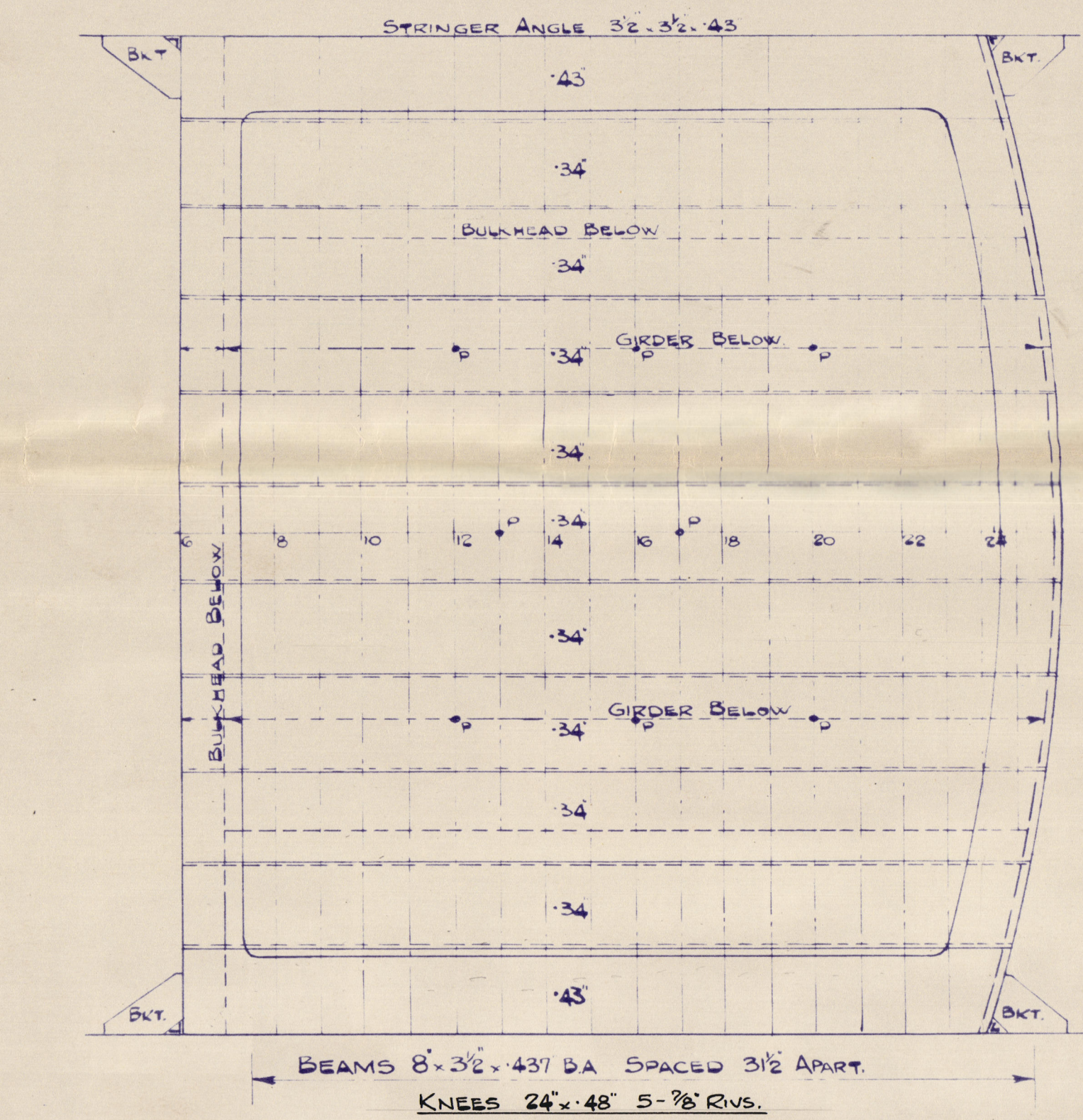
DIMENSIONS 460'-0" B.P. x 59'-0" MLD. x 34'-0" MLD.

SCALE 1/8" = 1 FOOT.

TO CLASS LLOYDS 100A.1 "CARRYING PETROLEUM IN BULK"

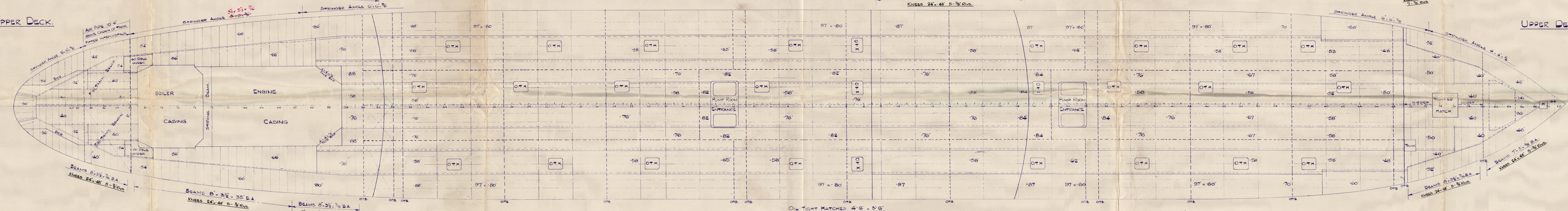
BRIDGE DECK.

FORECASTLE DECK.



UPPER DECK.

UPPER DECK.



MAIN DECK.

MAIN DECK.

