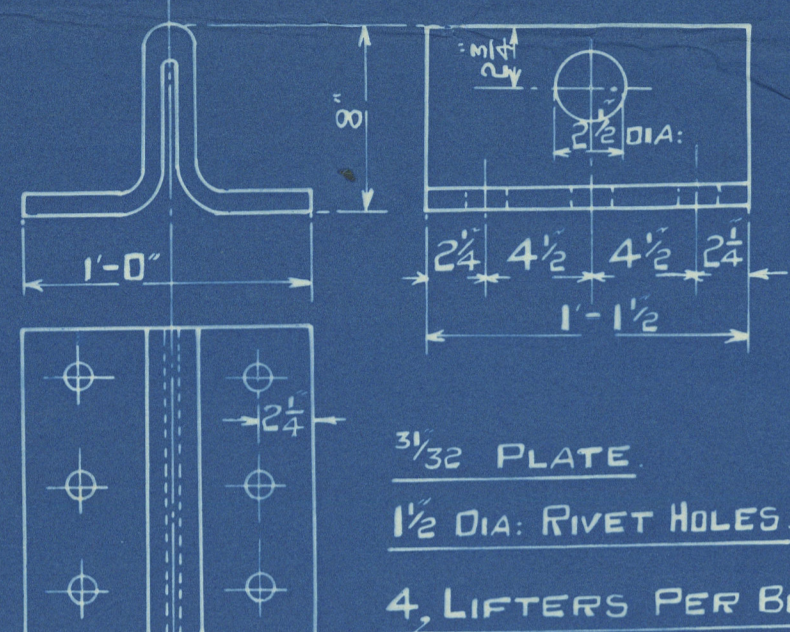
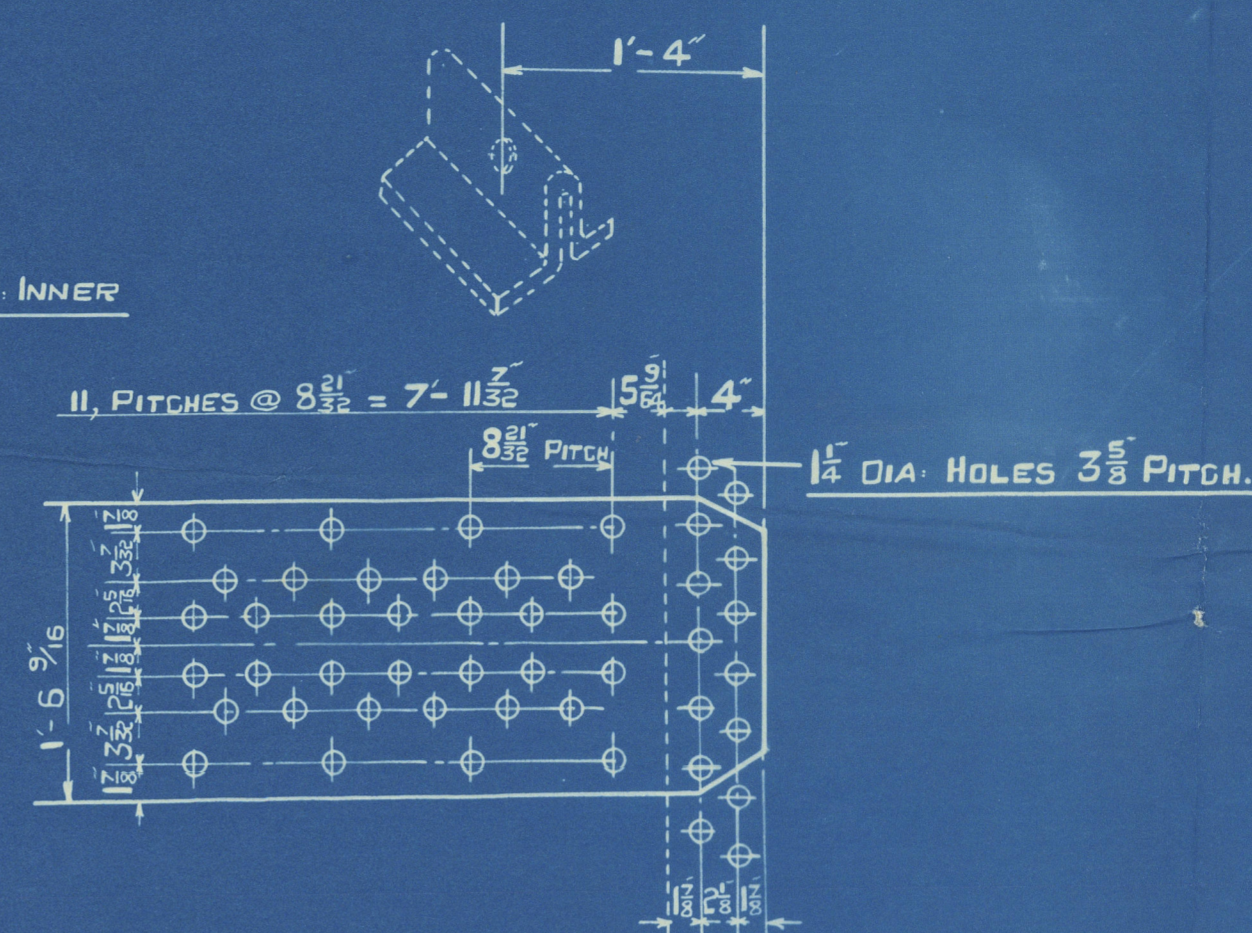


SCALE: — 1 INCH = 1 FOOT

app^d by Lloyd & owners
see letters 29/1/37



$$\underline{\text{SHELL}} = \frac{(38-2) \times 29 \times 85.55 \%}{2.75 \times 147.625} = \underline{220, \text{ LBS.}}^{\circ}$$



LONGITUDINAL STAYS 28 - 32 TONS

ONE OFF THUS ~~EACH ONE EACH~~

(AUX : BOILER.)

TRACING N^o 774 A

CONTRACT №

SCHEDULE "E"

2896

W1184-0021

North Eastern Marine Eng Co. Ltd.

auxiliary Boilers no 2896.

(Duplicate of Boilers nos 2883/2888)

Furnaces S.B. Co. 281

W.P. 220 lbs

S.S. "Zarian"

S.S. "Zarian" No. 16237.

NEWCASTLE ON TYNE.

Report No. 95892.

NO 753

LLOYD'S TEST

380 LBS

W.P. 220 LBS.

23-12-37 J.E.S.

RETAIN

© 2021

Lloyd's Register
Foundation