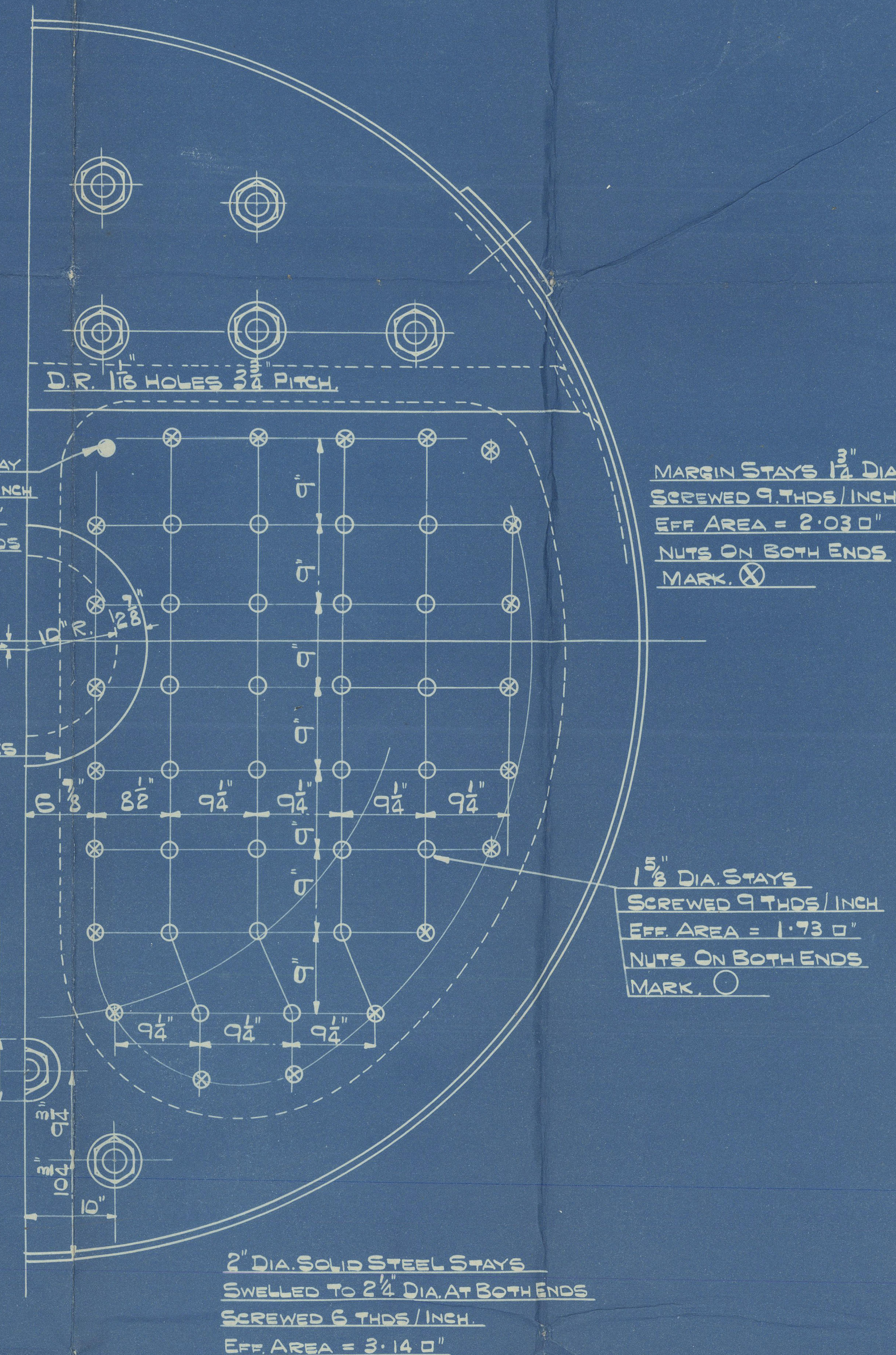
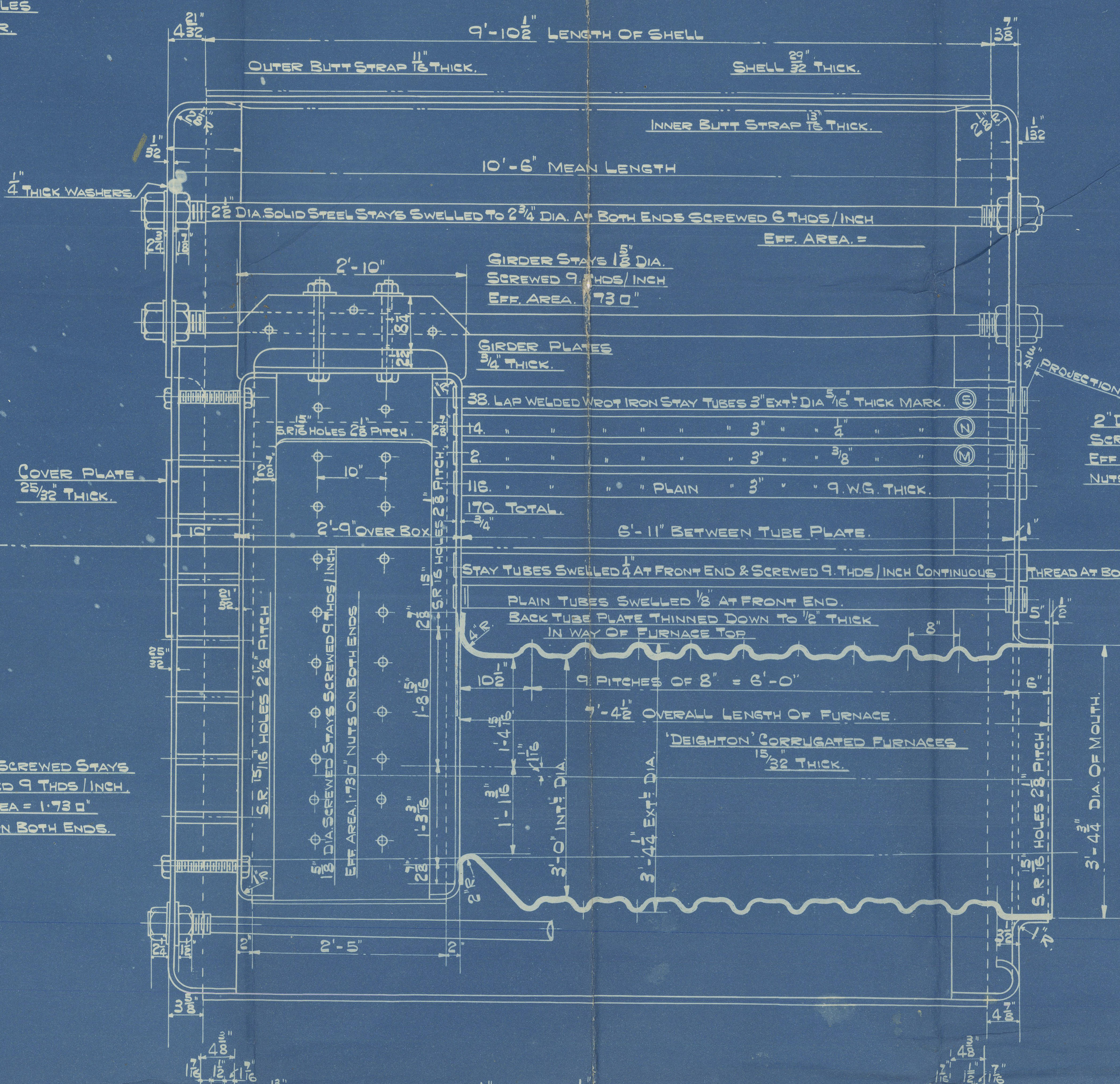
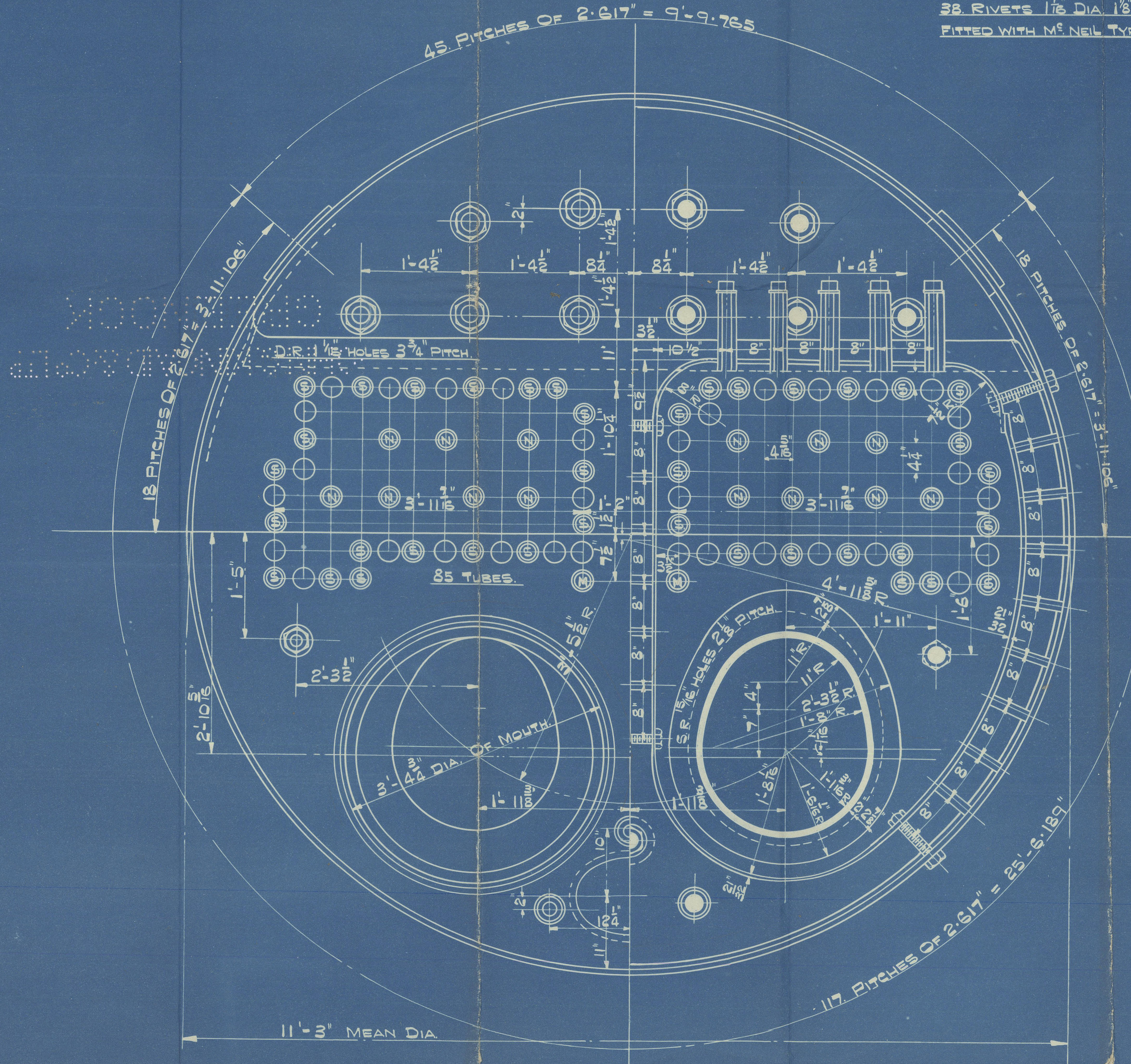


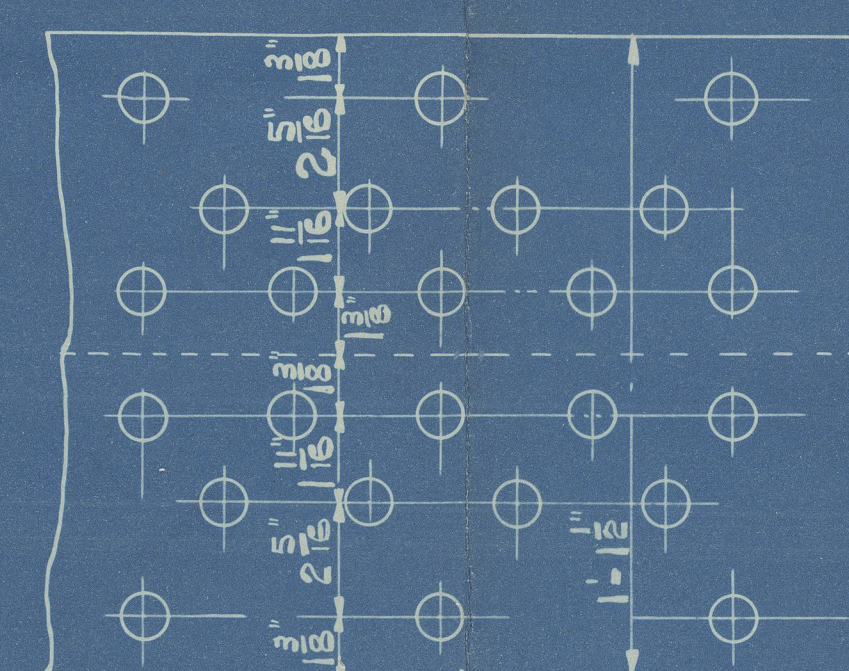
MANHOLE COMPENSATION RING
38 RIVETS 1 1/2 DIA. 1 1/2 DIA. HOLES
FITTED WITH M. NEIL TYPE DOOR.



STRENGTH OF MATERIAL		
	THICKNESS	TENSILE
SHELL PLATES	2 1/2	29-33 TONS/IN.
INNER BUTT STRAPS	1 1/2	"
OUTER " "	1 1/2	"
GIRDER PLATES	3/4	"
BACK TUBE PLATES	3/4	26-30 "
C.C. BACKS	2 1/2	"
WRAPPER PLATES	2 1/2	"
FURNACES	1 1/2	"
COMPENSATION RING	1 1/2	"
TOP END PLATES	1 1/2	"
FRONT BOTTOM END	1 1/2	"
BACK " "	2 1/2	"
COVER PLATES	2 1/2	"
RIVET BARS	"	"
COMB. CHAMBER STAYS	"	"
LONGIT. STAYS	"	28-32 "

HEATING SURFACE ETC.	SQR. FEET
170 TUBES 3" EXT. DIA.	920
FURNACES	145
COMBUSTION CHAMBERS	145
TOTAL	1210
AREA THRO' TUBES	6.04 SQ. FT.
STEAM SPACE	210 CUB. FT.
WATER AREA	100 SQR. FT.
WEIGHT OF WATER	13 TON, 10 CWT

JOINT	DIA. OF RIVET	DIA. OF HOLE	PITCH	PLATE %	RIVET %	COMBINED %	W.P. OF SHELL BY RULE
LONGITUDINAL	2 1/2	2 1/2	6 1/2	85.2	88.4	87.7	180-9 LBS PER SQR. INCH.
CIRCUMFERENTIAL	3/4	1 1/2	2-6 1/2	64.2	46.1		



DETAIL OF RIVET SPACING
IN BUTT STRAP

EXHAUST GAS AND OIL BURNING

DONKEY BOILER.
DIESEL ENG NO. K.104/R. K.105/R.

11'-3" MEAN DIA. X 10'-6" MEAN LENGTH 180 LBS/IN. W.P.

ONE OFF FOR EACH ENG. NO.

TO PASS LLOYDS TESTS AND REQUIREMENTS.

SCALE - 1" = 1 FOOT

18th MARCH 1936

DRG. NO. 9565

Auxiliary Boilers

Towards 1104-15

Swan Dealer^{m/s} 1521-3

W R 1800["]



M.V. - REGENT LION

NWC. 94861.

GRK. 1ST ENTRY REPORT N° 20300.

M.V. - REGENT PANTHER

GRK. 1ST ENTRY REPORT N° 20328.

W. S. 381



© 2020

Lloyd's Register
Foundation

W1183-0174