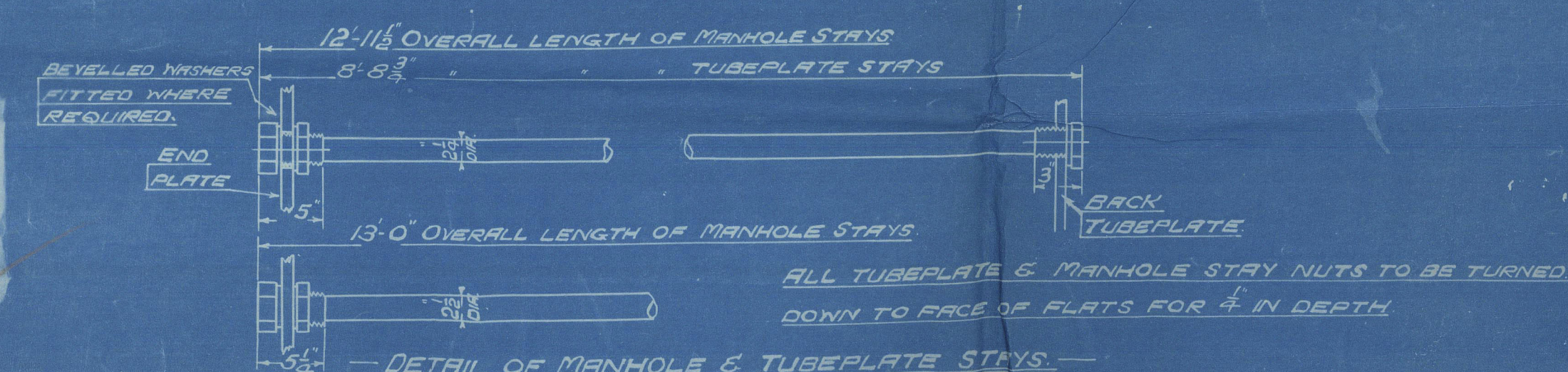
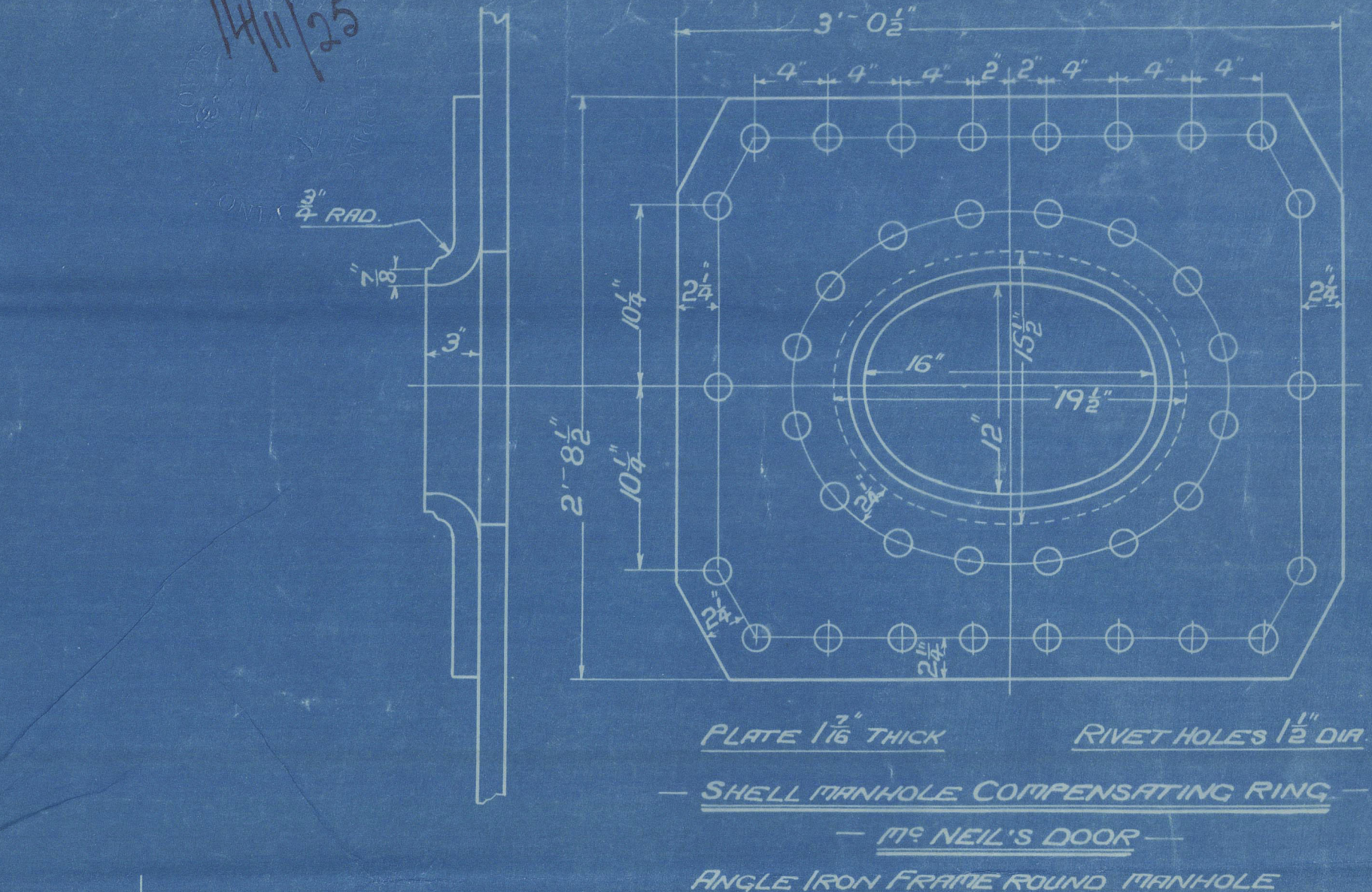
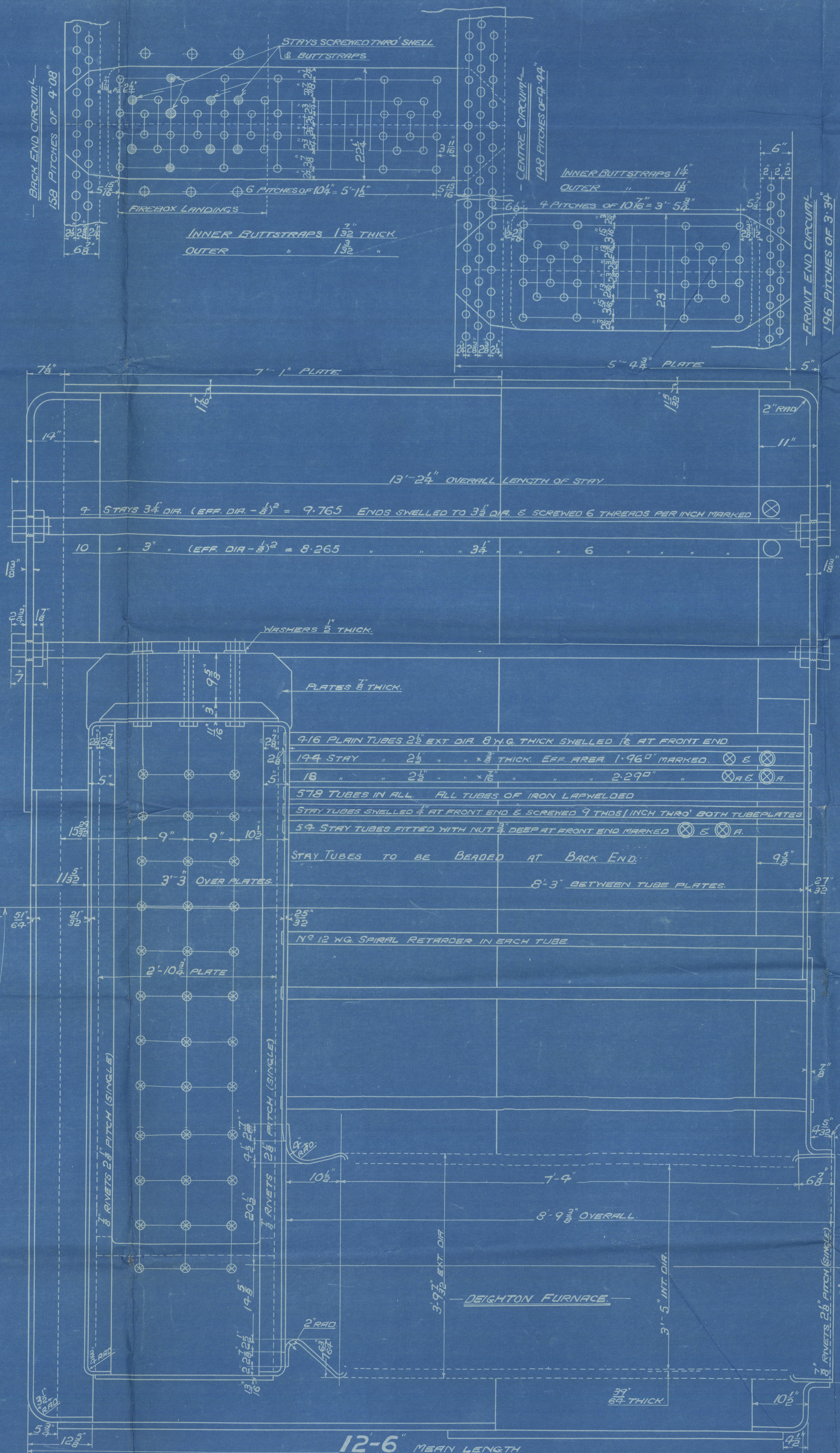
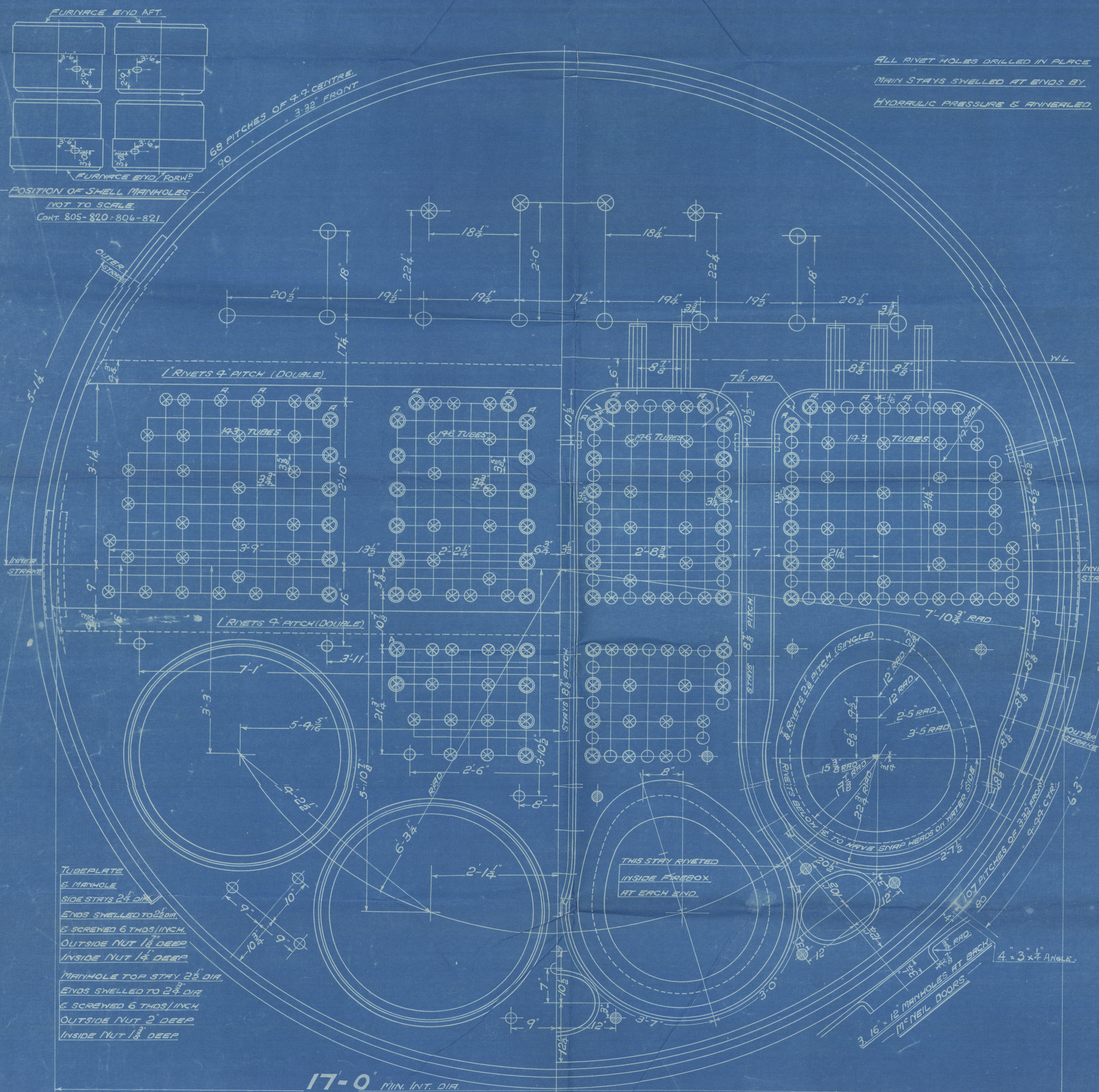


SURFACES		ONE BOILER		9 BOILERS	
TUBES		3126	12503	4	
FIREBOX TOP & SIDES		239	932		
BACK		105	420		
FURANCE		73	288		
TOTAL HEATING SURFACE		209	836		
GRATE AREA (5'-0" BARS)		3750	15000		
TUBE AREA		68.32	273.28		
WATER AREA		13.48	53.92		
STEAM SPACE		194	776		
GRATE AREA		1	1.52-3		
TUBE		1	1.45-3		
AREA		5.07	1		
WATER		1	1.28-3		
STEAM SPACE		1	1.10-2		
% BOILER ABOVE FIREBOX		31.9			
WEIGHT OF WATER		36 TONS	144 TONS		

RIVETING				
LONGIT.	THICK	CENTRE	FRONT	END
INNER	OUTER	STAYS	STAYS	STAYS
RIVET HOLE DIA.	1 1/8	1 1/8	1 1/8	1 1/8
PITCH	10 1/2	10 1/2	9-08	4-14
% PLATE	85.3	65.03	63.2	65.9
% RIVET	86.2	87.7	76.2	62.9
% COMPANED	87.25	88		

LIMITS OF TENSILE STRENGTH & MATERIAL	
SHELL & BUTTSTRIPS	30 TO 34 TONS
GRIDERS	28 - 32
OTHER PLATES	26 - 30
FURANCES	26 - 30
RIVET BARS	26 - 30
MAIN STAYS	28 - 32
SCREWED STAYS	2 1/2 TONS
	IRON



MAIN BOILER
 2 OFF EACH CONTRACT NO.
CONT'S NOS 805-806-820-821-834
 WORKING PRESSURE 200 LBS. PER SQ. INCH
 TEST 350
 TO PASS LLOYD'S & BOARD OF TRADE SURVEY
 TO HAVE BOARD OF TRADE SPECIAL CERTIFICATE
 SCALE - ONE INCH = ONE FOOT

ALL FIREBOX STAYS SCREWED THRO' BOTH PLATES & NUT FITTED AT EACH END EXCEPT STAYS
 FROM WING FIREBOX TO SHELL WHICH PROJECT 5" & ARE CALKED
 ALL 18" & 14" NUTS & DEEP EXCEPT ON GRIDER TOPS WHERE THE OUTSIDE NUTS ARE 1 1/2" DEEP
 ALL 18" & 14" NUTS 1" DEEP
 ALL 2 1/2" NUTS 1 1/2" DEEP

OT. 31462
 TRS 100000
 Traced 31st June 1934



GLASGOW

D. ROWAN & CO L^D

(4) BOILERS N^o 834

W.P. - 200 LBS

DUPLICATE OF N^{os} 805.806
820 & 821.

W^M HAMILTON & CO L^D
S/S N^o 396

N ^o 17184
LLOYD'S TEST
350 LBS
WP. 200 LBS
L.C.D.
6-8-26

Matra

GLASGOW REPORT No 46112



© 2021

Lloyd's Register
Foundation