

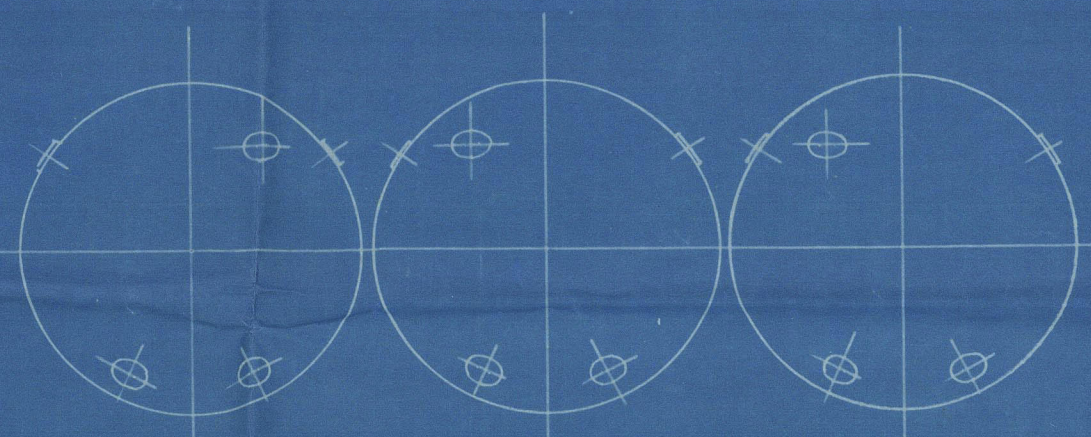
NORTHUMBERLAND ENGINE WORKS

TRACING 503

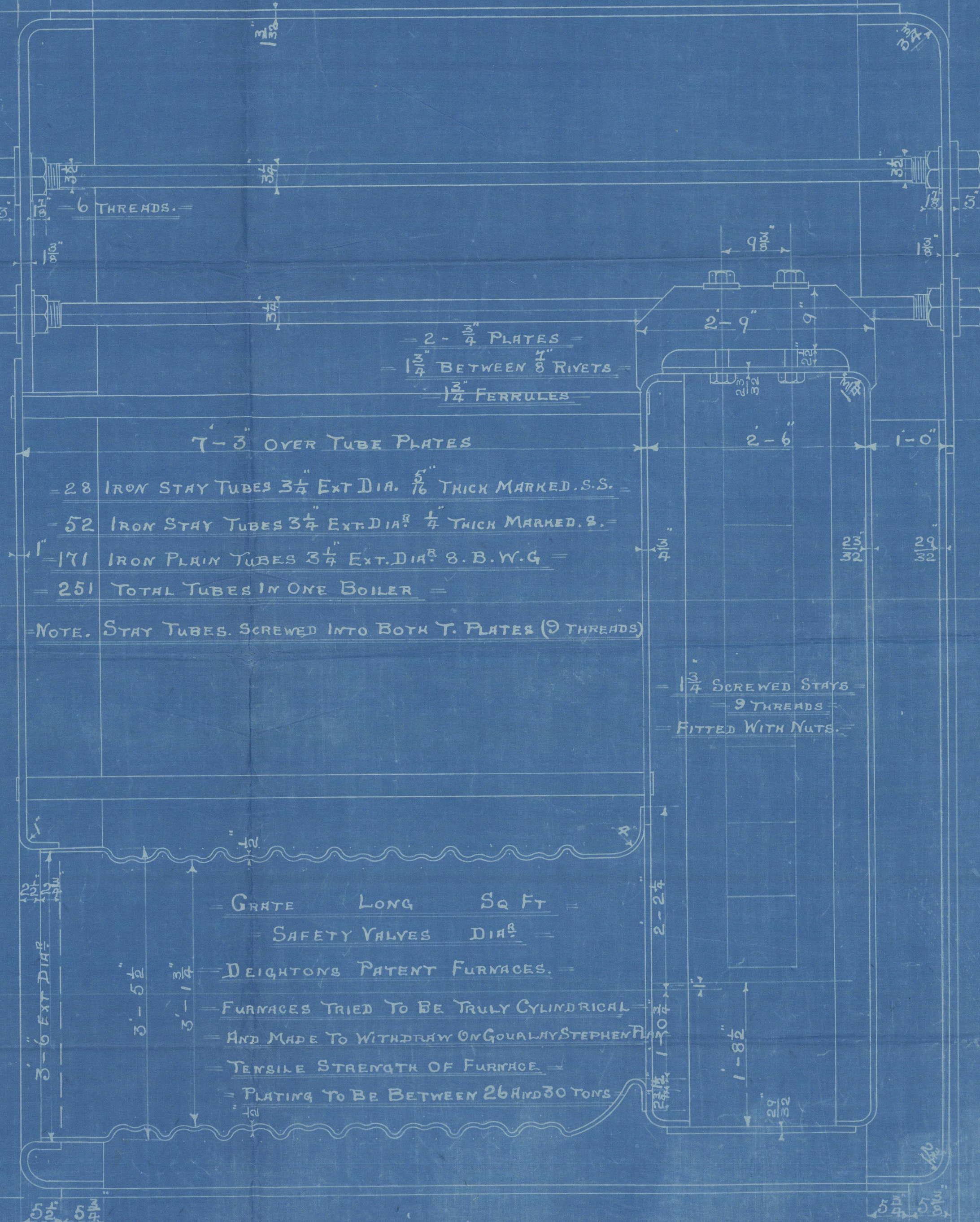
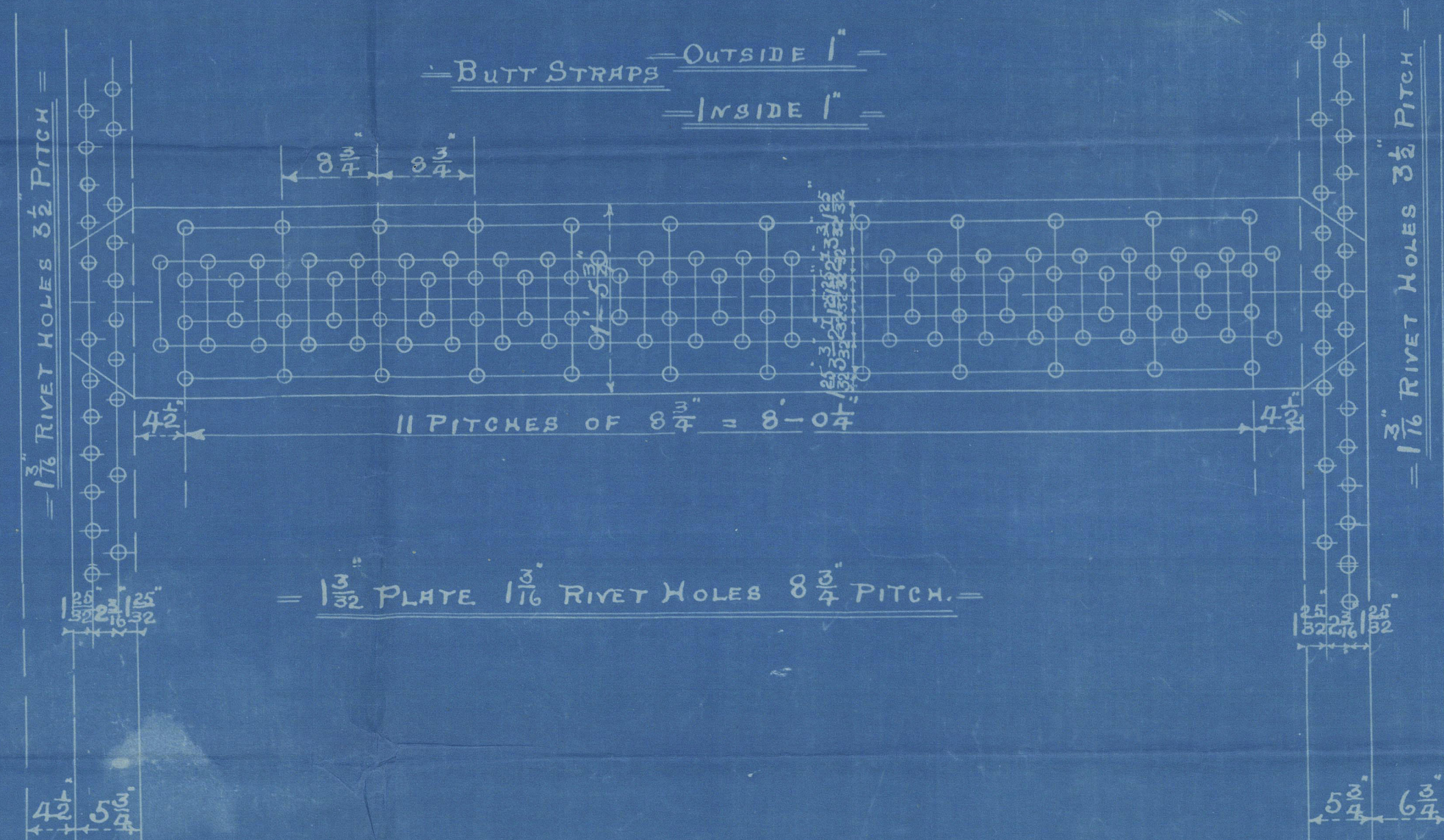
STEAM BOILER

SCALE. INCH = ONE FOOT

J.H.A.
15/2/10



VIEW LOOKING ON BACK OF BOILERS SHOWING POSITION OF MANHOLES AND BUTT JOINTS.



29.9.16

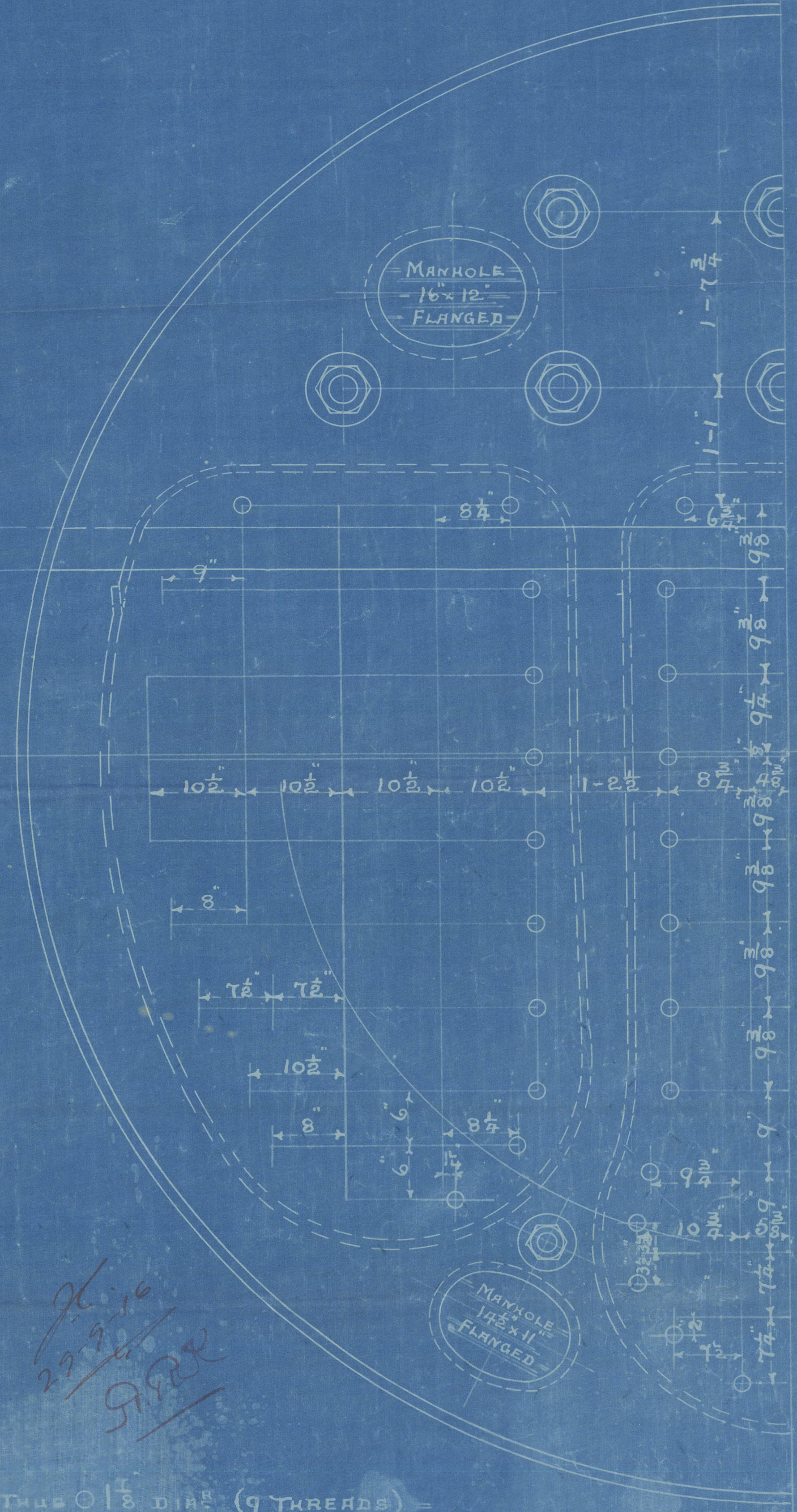
WORKING PRESSURE 180 LBS.

TEST PRESSURE 360

NOTE. ALL PLATES STAYS TO BE OF STEEL SMOKE TUBES OF IRON.

TENSILE STRENGTH OF SHELL PLATING TO BE NOT LESS THAN 28 TONS. IN

ALL HOLES DRILLED IN PLACE AFTER PLATES ARE BENT.



STAYS MARKED THIS 0 1 3/8 DIA (9 THREADS)

ALL OTHERS 1 1/2 DIA (9 THREADS)

NOTE. ALL SCREW STAYS SCREWED INTO PLATE AND FITTED WITH NUTS.

FOR POSITION OF MANHOLES. SEE SEPARATE SKETCH ABOVE.

3 THUS

CONTRACT



Register Foundation

N. E. M. E. Co., LIMITED, WALLSEND.

ENCLOSURE
FOR

Messrs. *Lloyd's*

W1182-0105 3/4

N. E. Maine by Co 2287-2290

Main Boilers 180 lbs.

2287 To be made at Sunderland



No 2290

S.S. Mud now

"Giovanna Florio"

S.S. "GIOVANNA FLORIO"

NEWCASTLE ON TYNE.

Report No. 143689.

Messington Cove

