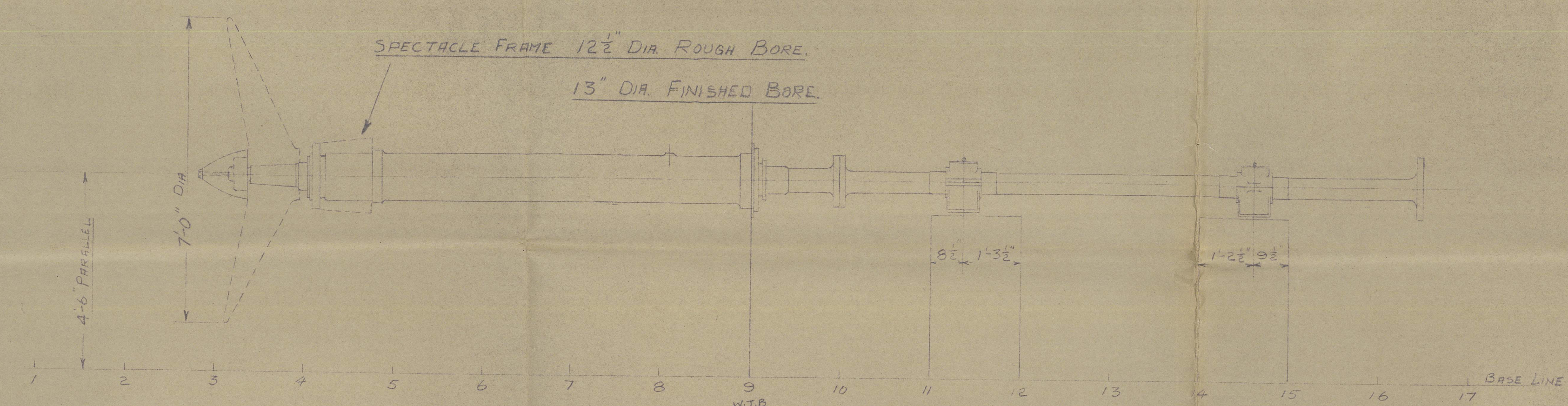
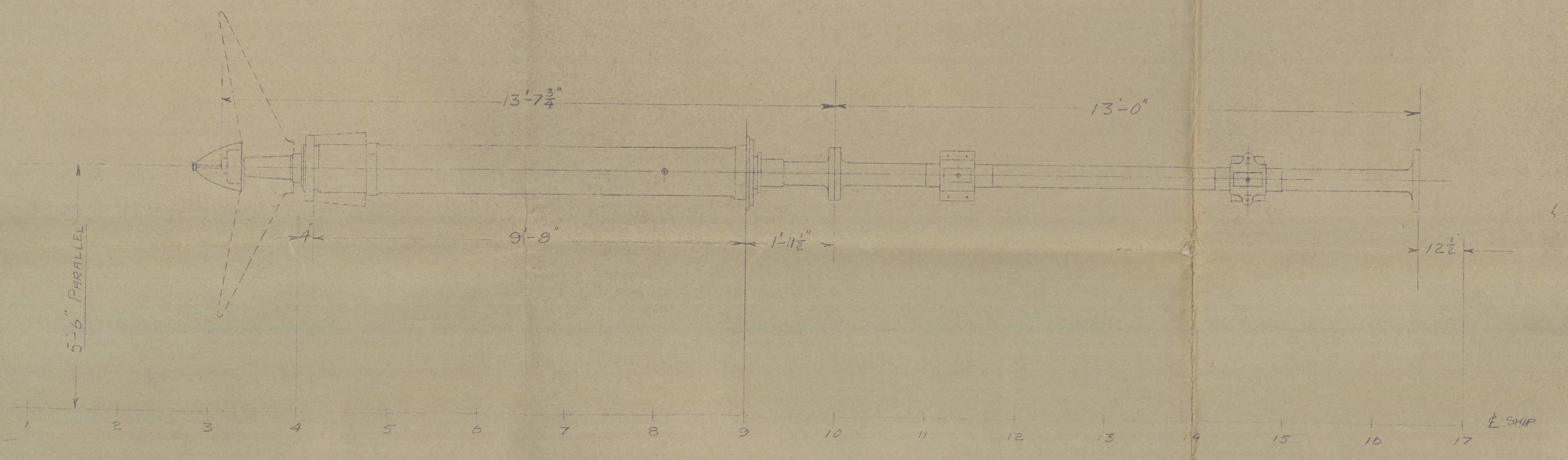


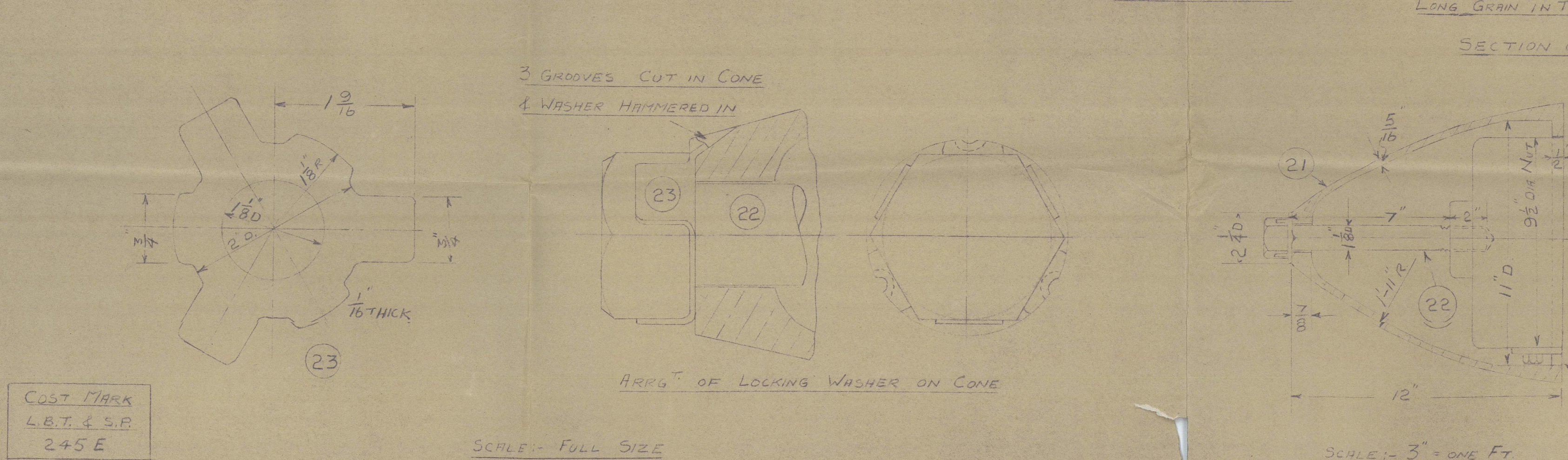
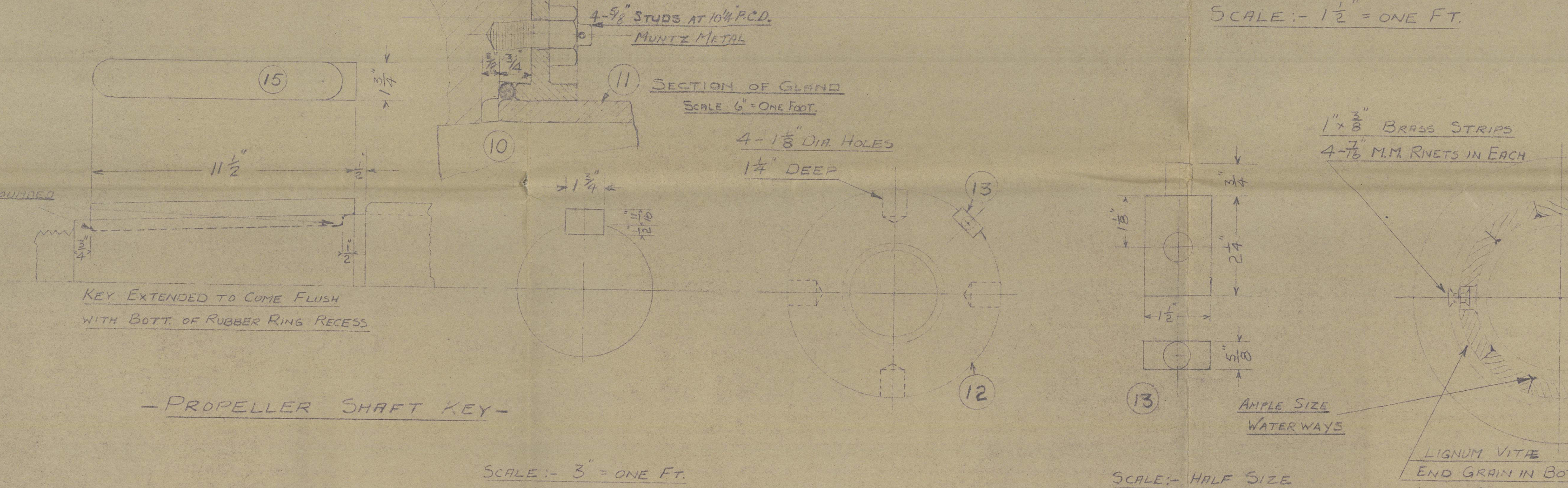
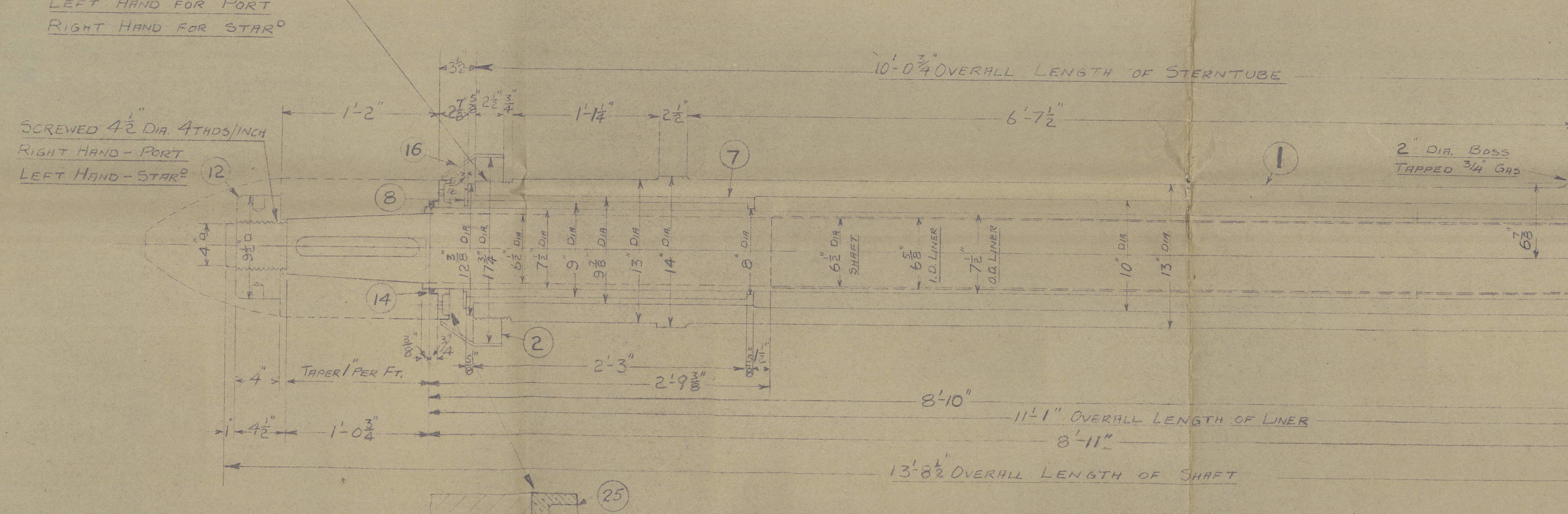
25 MAY 1937



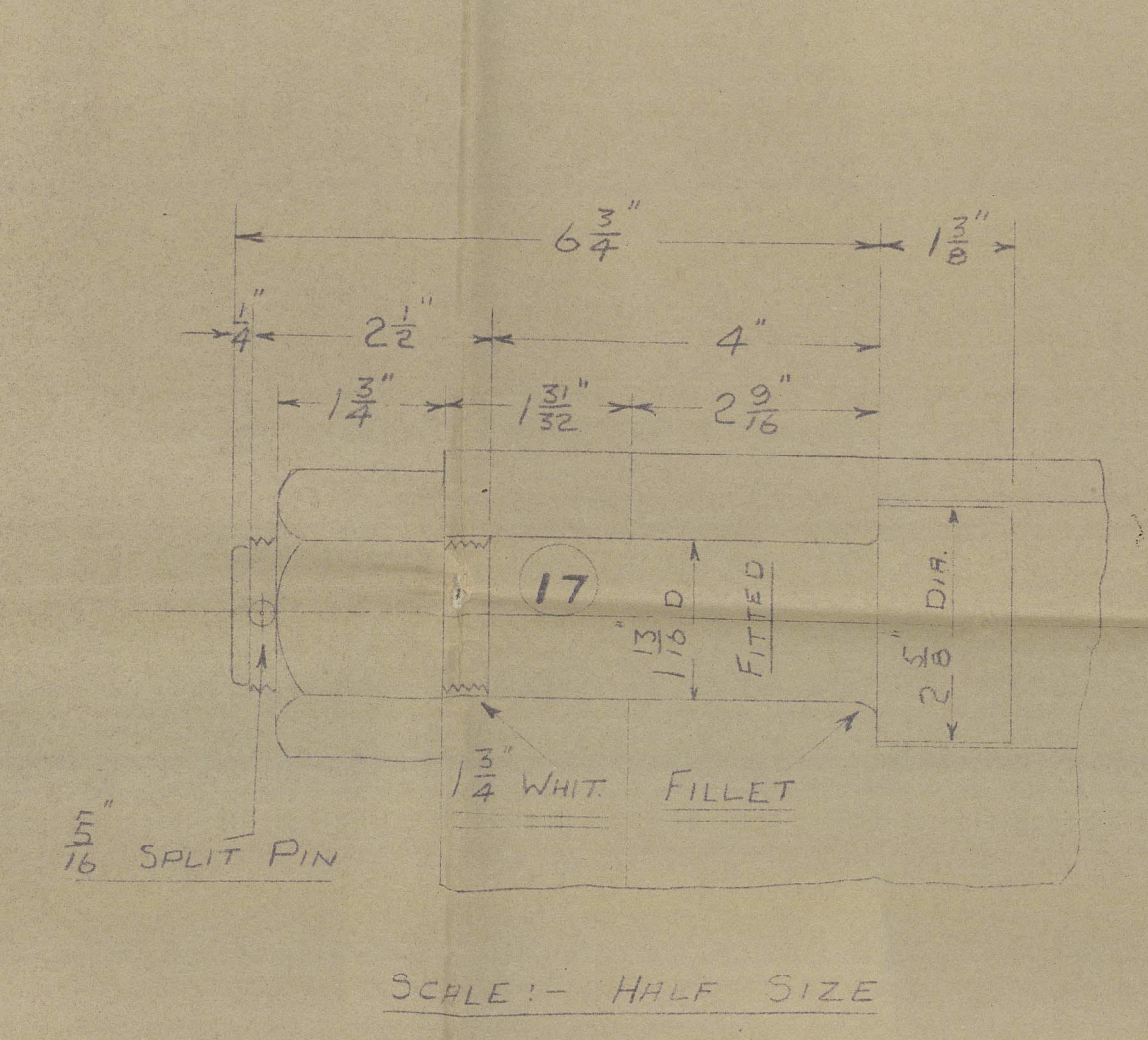
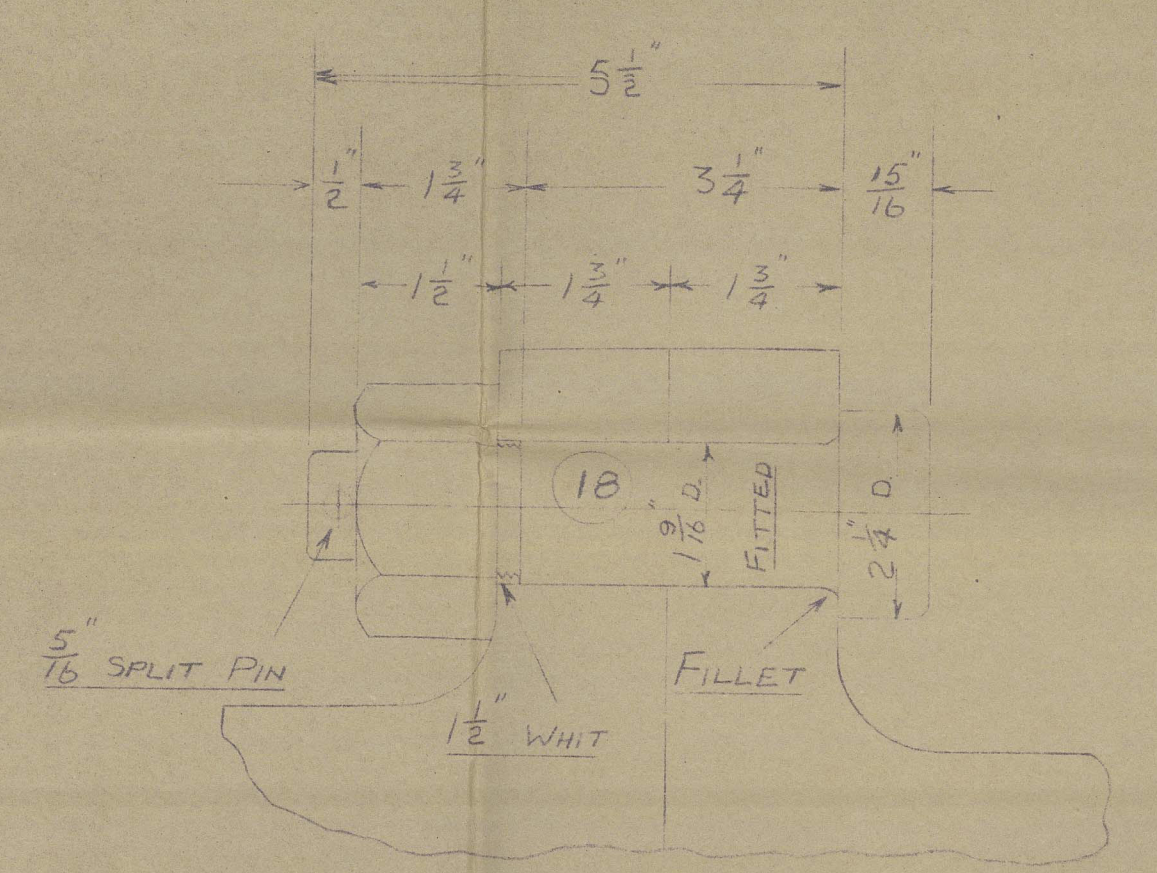
FRAME SPACING 24"
SHAFTING TURNS OUTBOARD & OVER WHEN GOING AHEAD



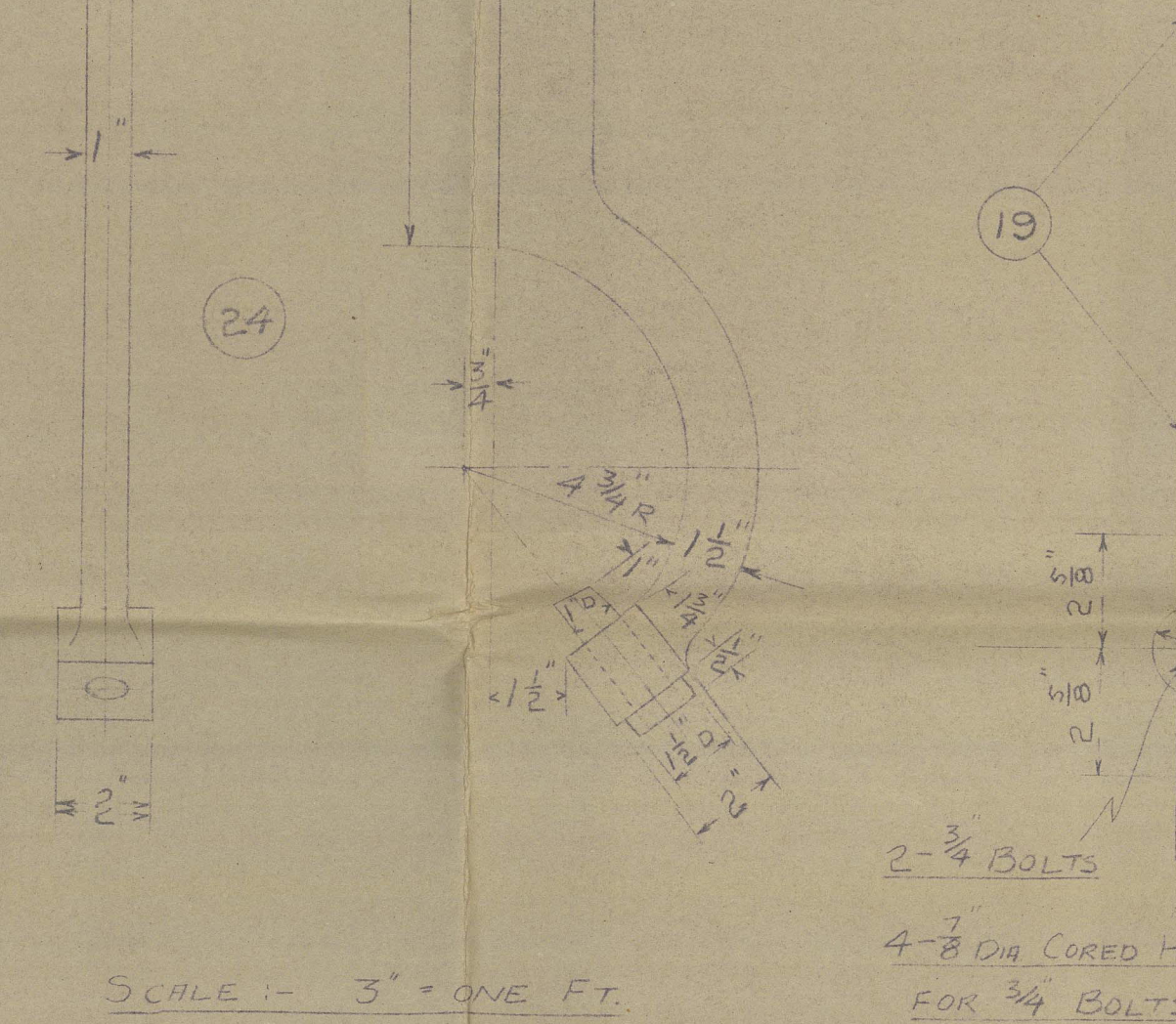
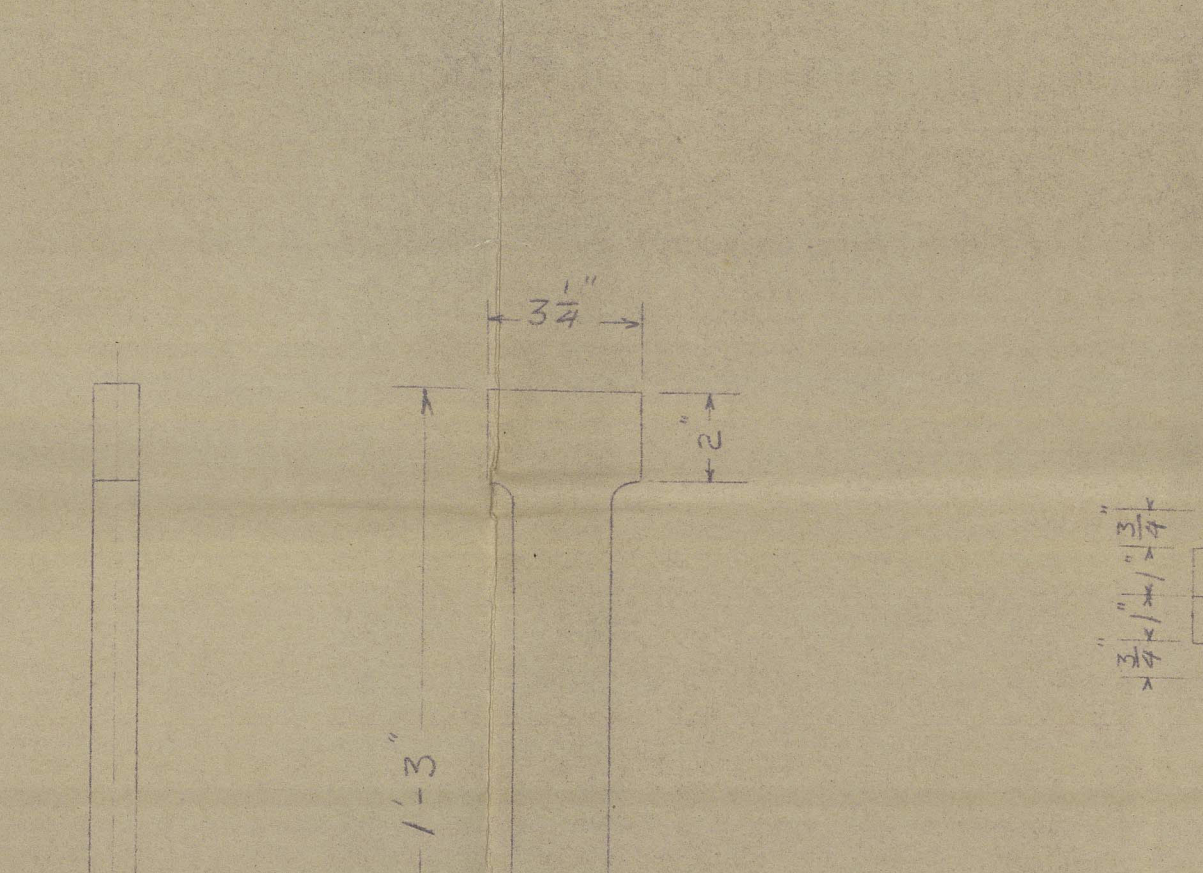
SCALE: 1/2" = ONE FT.



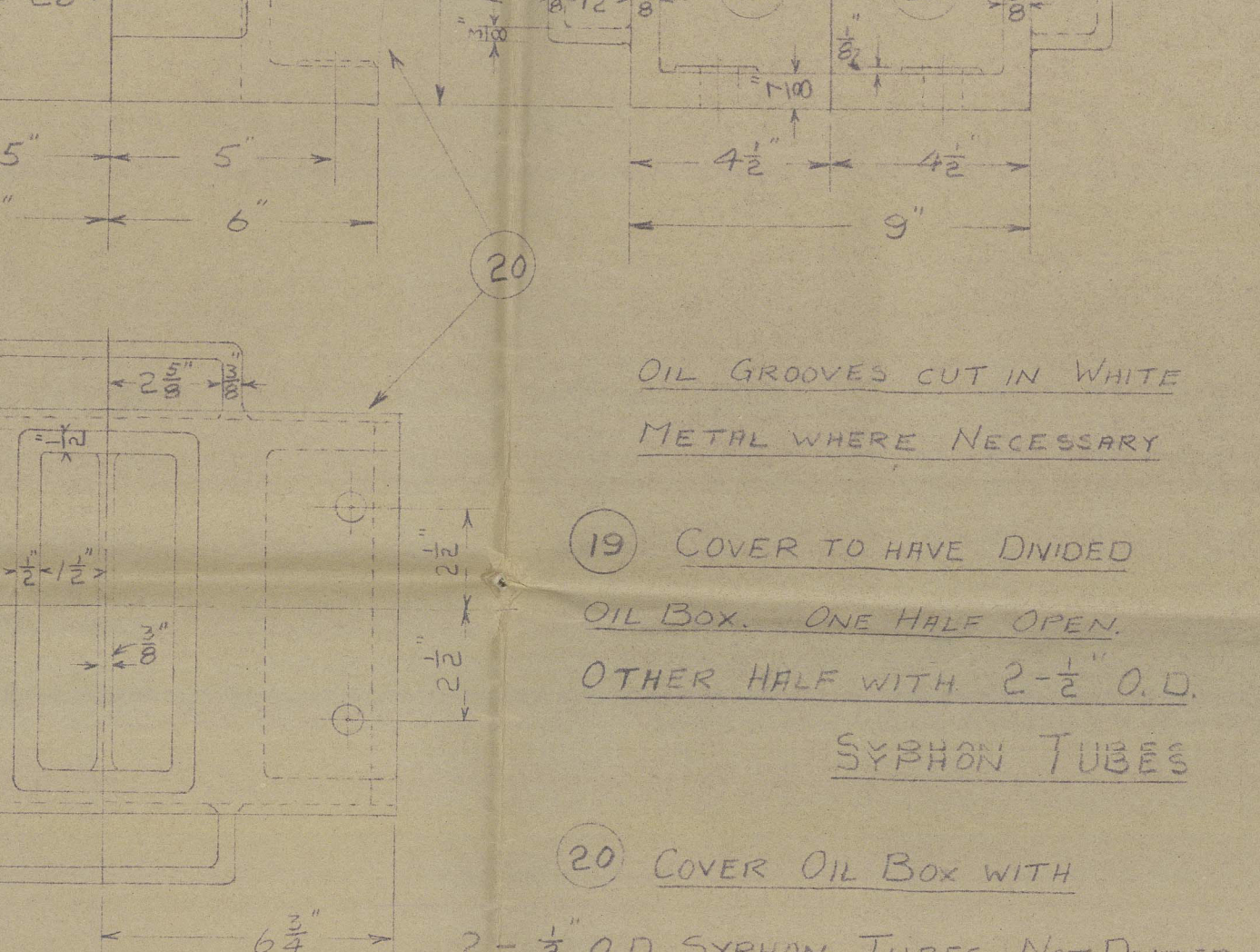
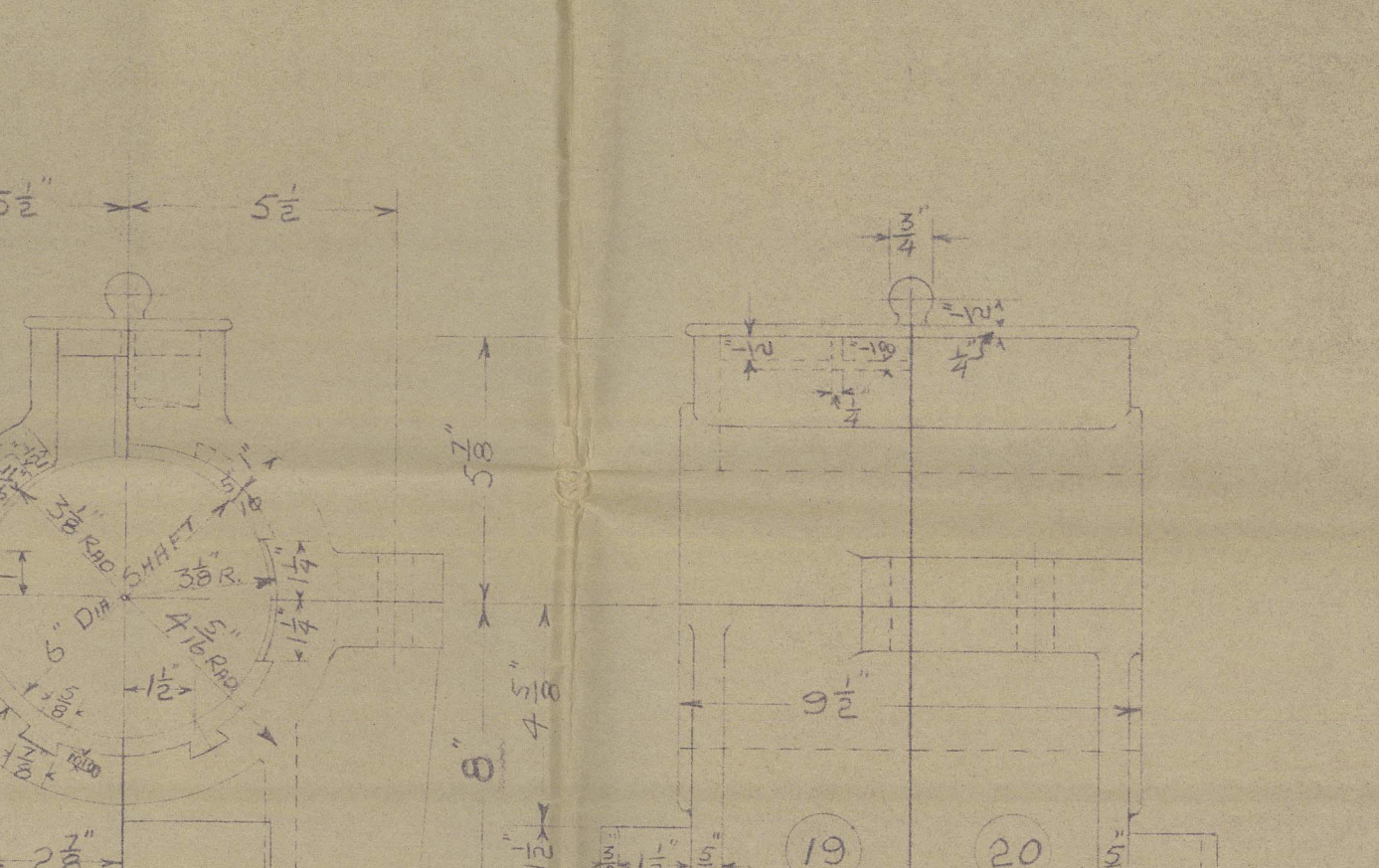
SCALE: 3" = ONE FT.



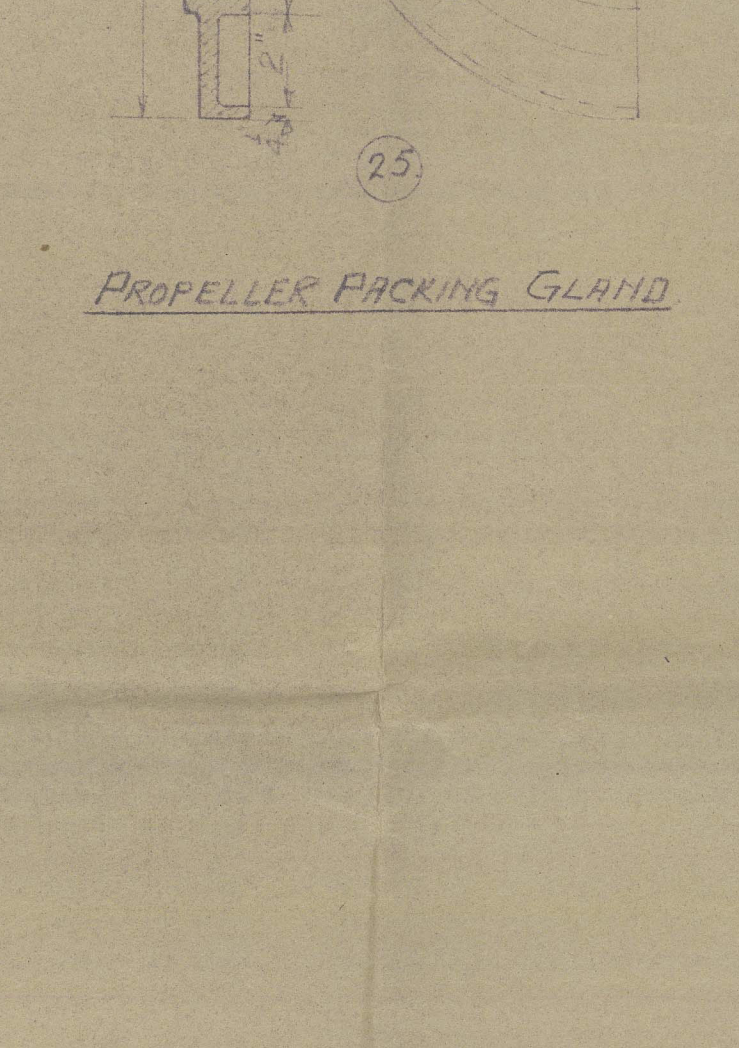
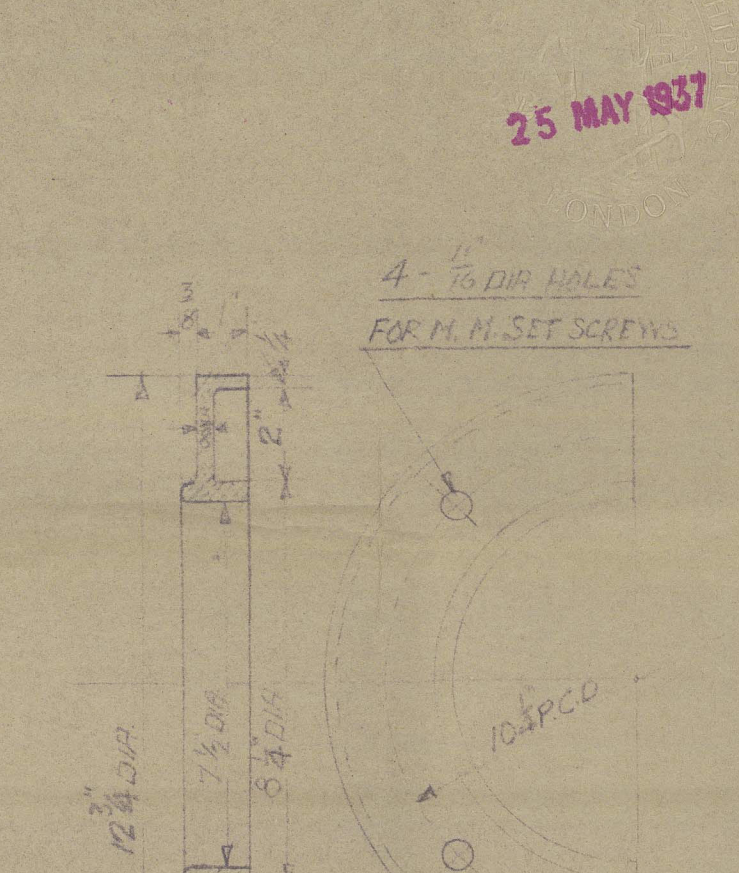
SCALE: 1/2" = ONE FT.



SCALE: 3" = ONE FT.



SCALE: 3" = ONE FT.



SCALE: 3" = ONE FT.

PORT AS DRAWN - STARS TO OPPOSITE HAND

QUANTITIES GIVEN ARE FOR ONE CONTRACT NUMBER

MARK	DESCRIPTION	NO. OF MATERIAL	REMARKS
1	STERN TUBE	2 CAST IRON	
2	STERN TUBE NUT	2 MILD STEEL RT & LEFT HAND THRD.	
3	STERN TUBE GLAND	2 CAST IRON	
4	STERN TUBE GUNN BUSH	2 GUN METAL	
5	STERN TUBE GLAND STUDS	8 WHITE METAL WITH DOUBLE NUTS	
6	STERN TUBE FOR BUSH	2 GUN METAL	
7	STERN TUBE AFT BUSH	2 GUN METAL LIGHTLY VITRE LINED	
8	WOOD RETAINING RING	2 GUN METAL	
9	INTERMEDIATE SHAFT	2 MILD STEEL FORGED	ONE LEFT HAND THREAD INGOT STEEL TWO RT. HAND THRD. (1 SPARE)
10	PROPELLER SHAFT	3 GUN METAL	ONE LEFT HAND THREAD TWO RT. HAND THRD. (1 SPARE)
11	PROPELLER SHAFT LINER	3 GUN METAL	ONE LEFT HAND THREAD TWO RT. HAND THRD. (1 SPARE)
12	PROPELLER NUT	3 MILD STEEL	INCLUDES ONE SPARE
13	PROPELLER NUT STOPPER	3 MILD STEEL	INCLUDES ONE SPARE
14	PROPELLER PACKING RING	3 RUBBER	INCLUDES ONE SPARE
15	PROPELLER SHAFT KEY	3 MILD STEEL	INCLUDES ONE SPARE
16	ROPE GUARD	2 3/4 MS. PLATE MADE IN HALVES	
17	Coupling Bolts with Nuts	18 MILD STEEL	INCLUDES 6 SPARE
18	Coupling Bolts with Nuts	18 MILD STEEL	INCLUDES 6 SPARE
19	FOR PLUMMER BLOCK	2 CAST IRON	BOTT. HALF WHITE METAL LINED TOP & BOTTOM HALVES
20	RET. PLUMMER BLOCK	2 CAST IRON	WHITE METAL LINED
21	PROPELLER CONE	2 GUN METAL	
22	BOLT FOR CONE	2 MILD STEEL	
23	LOCKING WASHER	2 MILD STEEL	
24	PROPELLER NUT SPANNER	1 MILD STEEL	
25	PROPELLER PACKING GLAND	2 GUN METAL	

SURVEY: LLOYDS

SHAFTING DESIGNED FOR 640 B.H.P. AT 250 R.P.M.

STERNTUBE & SHAFTING

CONTRACT 245 E

DRWG. NO 1516/245

SCALE: AS MARKED

3-5-37

H. Robb Ltd

Yard No 245.

Stern tube & Shafting.

M/V "Kahika"

Lth Rpt No 19509



© 2021

Lloyd's Register
Foundation