

SINGLE SCREW TUGS.

"RESCUE" TYPE.

NO 552 C 553 C 553 C & 564 G.

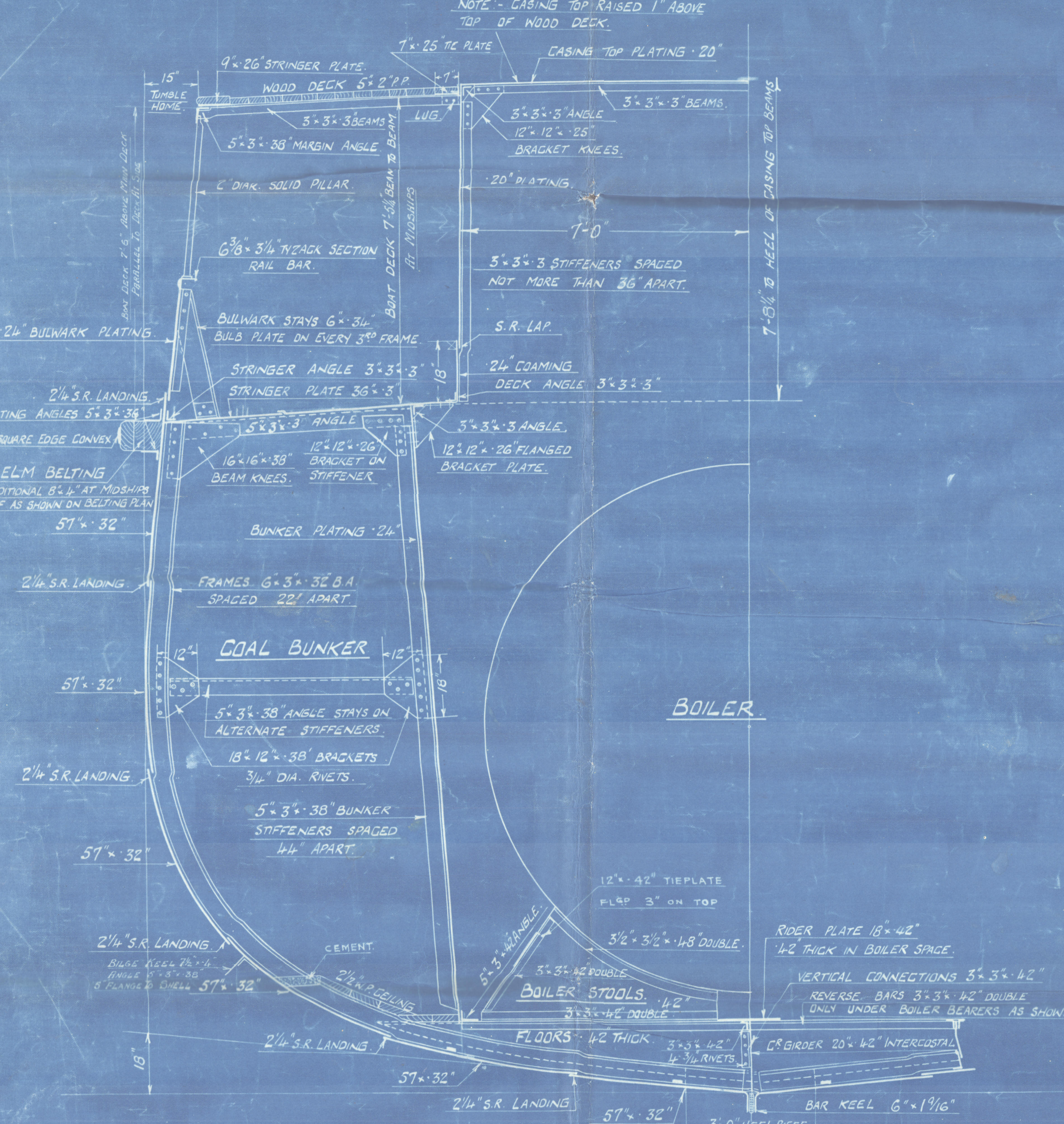
HULL SECTIONS.

SCALE 1/2" = 1 FOOT.

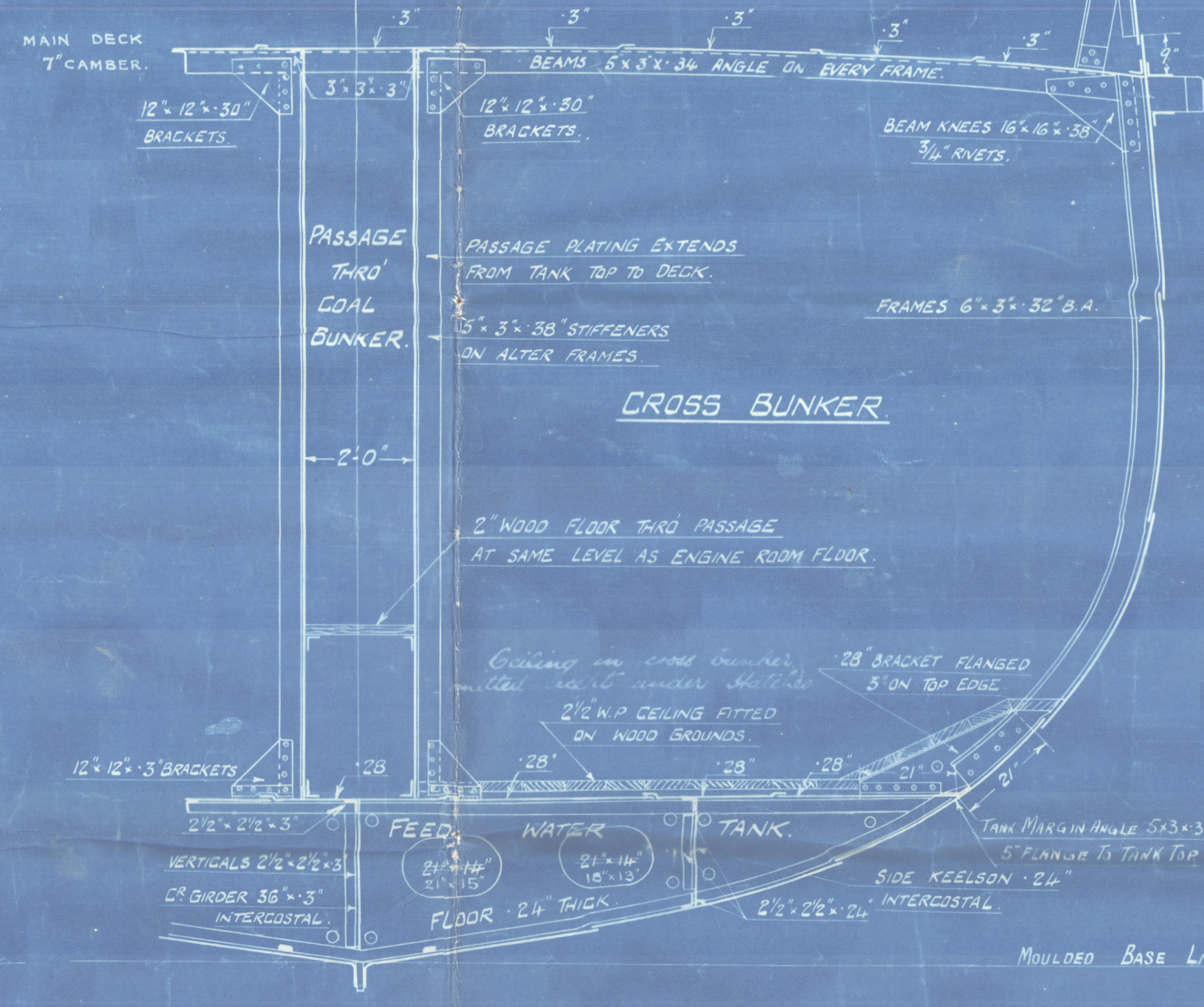
DIMENSIONS 135'-0" BP X 29'-0" MLD X 16'-0" MLD
TO CLASS LLOYDS A1 FOR TOWING PURPOSES



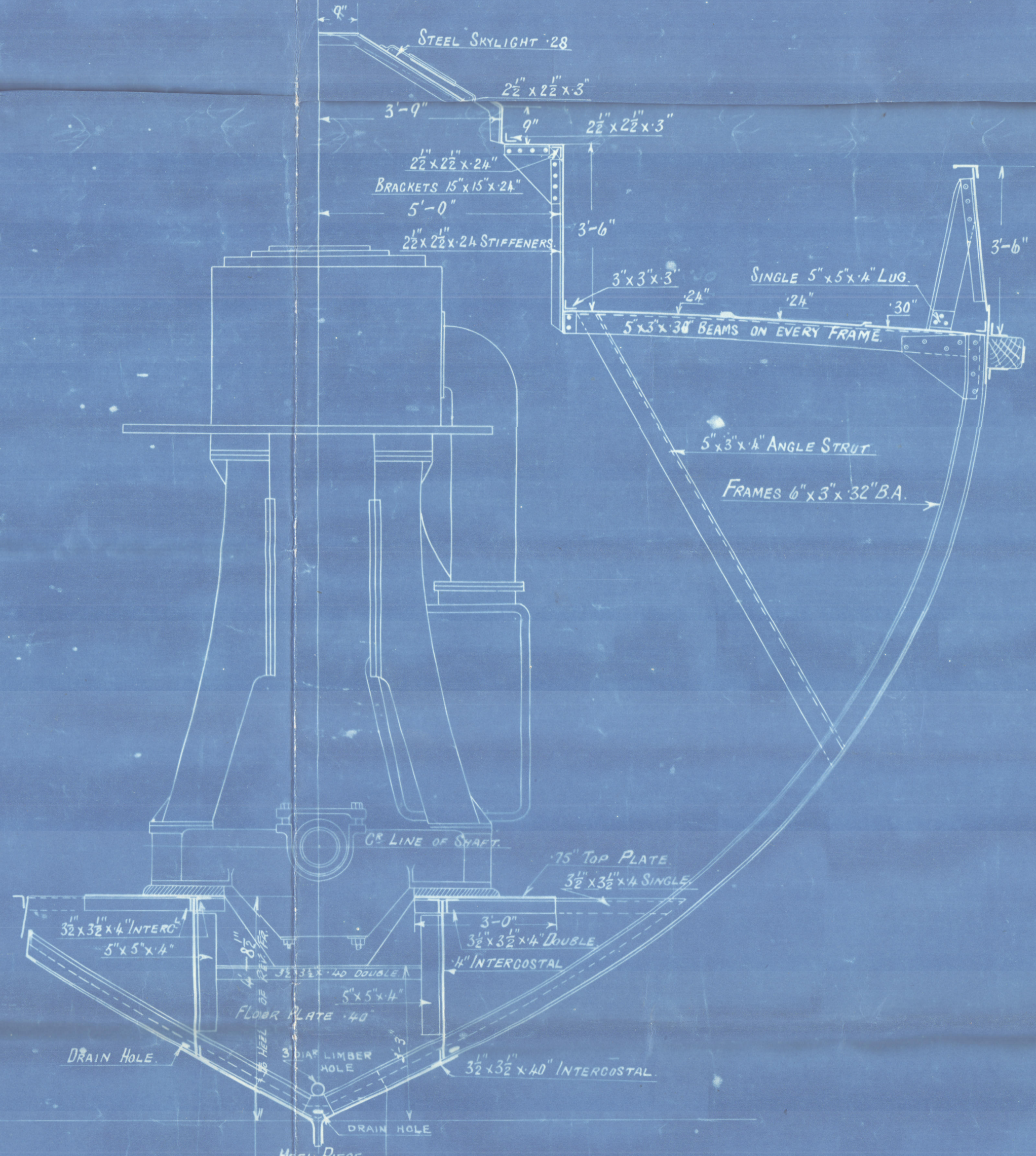
STEM 6" x 1 1/2" AND AS PER STEM PLAN
STERN FRAME (RUDDER POST 5 1/2" x 3 1/2" PROPELLER POST 5 1/2" x 3 1/2") AS PER STERNFRAME & RUDDER PLAN.
FRAMES 6" x 3" x 32" BULB ANGLES SPACED 22" APART FORE & AFT IN FEED TANK 3" x 3" x 24"
REVERSE FRAMES FITTED ACROSS TOP OF FLOORS ONLY, IN FEED TANK 3" x 3" x 24" SINGLE IN BULKER SPACE 3" x 3" x 42" SINGLE, DOUBLED UNDER BULKER BEAMERS IN ENGINE SPACE 3 1/2" x 3 1/2" x 12" AS SHOWN IN BULKER SPACE 20" x 12" IN FEED WATER TANK 25" x 12" IN ENGINE SPACE 1/2" THICK AS SHOWN, AND AT ENDS 1/2" THICK FLANGED 3" ON TOP IN LIEU OF REV. FRAMES. 6" x 3" x 34" ANGLE ON EVERY FRAME, 5" x 3" x 3" IN WAY OF ENGINE & BULKER CAGING.
MAIN DECK BEAMS 6" x 3" x 32" B.A. ON EVERY FRAME & 5" x 3" x 34" ANGLES FROM FRAME 69 FORWARD, ON EVERY FRAME.
BULKHEADS AS PER BULKHEAD PLAN.



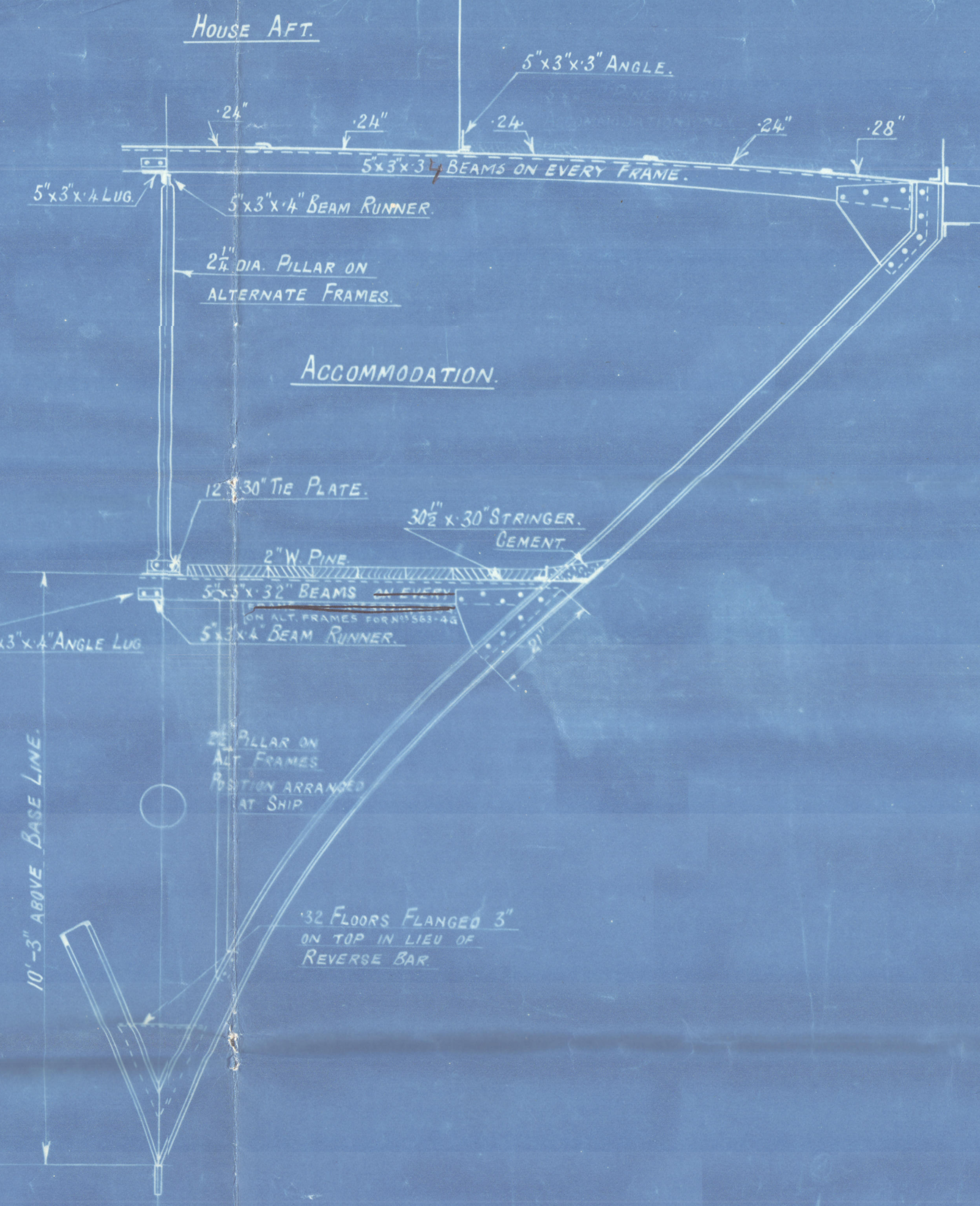
SECTION THRU BOILER ROOM AT FRAME 31.



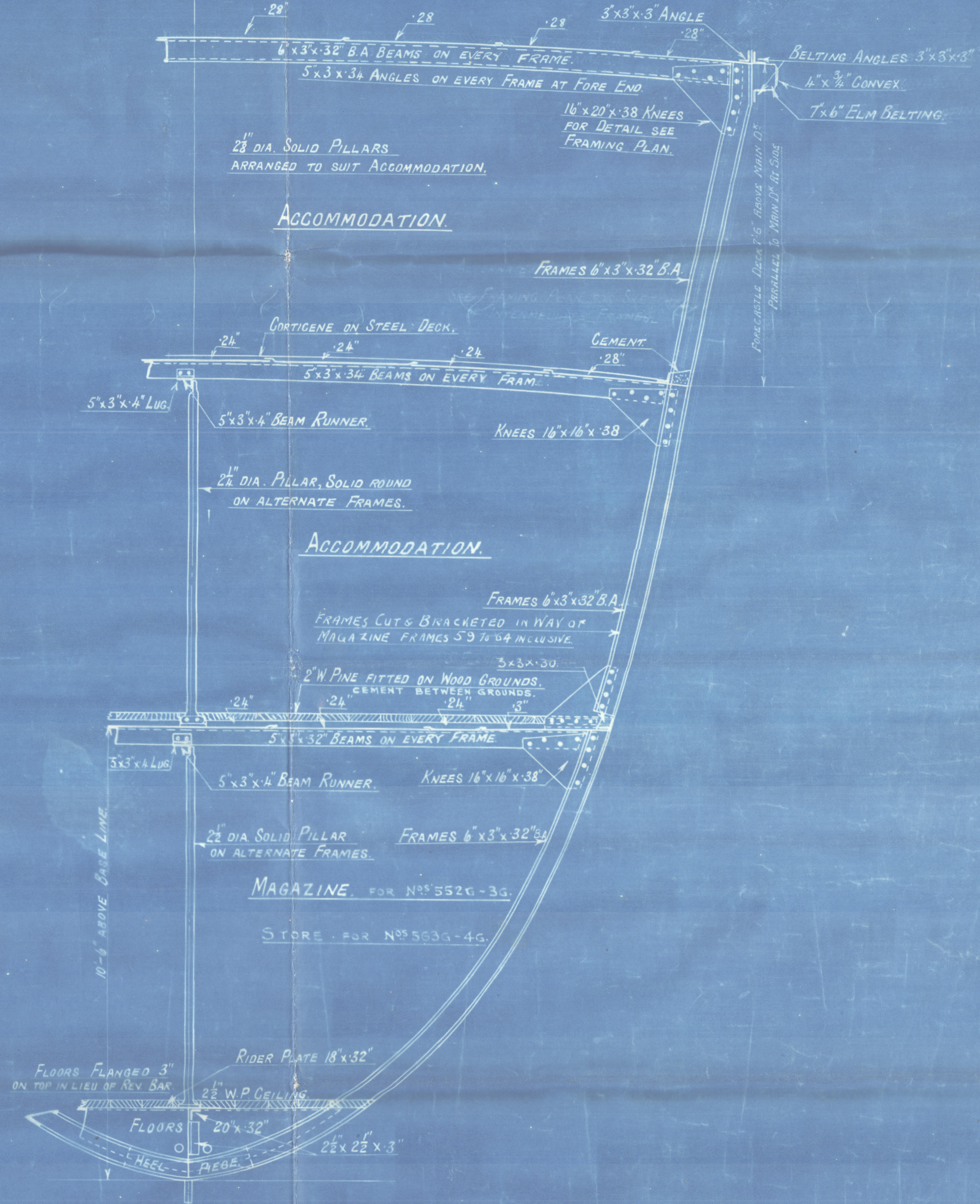
SECTION THRU CROSS BUNKER AT FRAME 51.



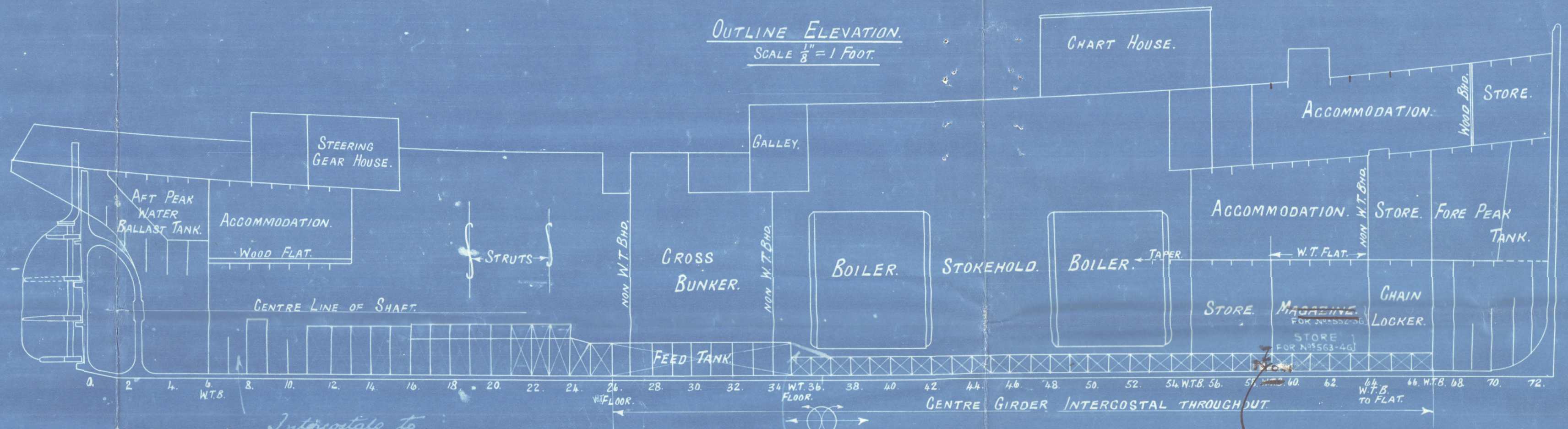
SECTION THRU ENGINE ROOM AT FRAME 20.



SECTION THRU FLAT AT FRAME 10.



SECTION THRU FORECABIN AT FRAME 60.



OUTLINE ELEVATION. SCALE 1/2" = 1 FOOT.

EQUIPMENT.

- 2 BOWER ANCHORS STOCKLESS EACH 10 1/2 CWTs.
- 1 KEDGE ANCHOR EX STOCK 1 1/2 CWTs.
- 2 SALVAGE ANCHORS TO OWNERS REQUIREMENTS 50 CWTs. EACH
- 120 FATHOMS 1 1/2" STUD LINK CHAIN CABLE
- 11/5 12" MANILLA TOWING HAWSER
- 75 7 1/2" HEMP
- 120 9" MANILLA HAWSER
- 2-60 6" "
- 90 5 1/2" "
- 2-60 1 1/2" "
- 100 3" "
- 60 3 1/2" FLEXIBLE GALVANIZED STEEL WIRE ROPE, FITTED ON WIRE REEL WITH BRAKE.

SUPPLIED BY ADMIRALTY.

BUILDERS. Harland & Wolff

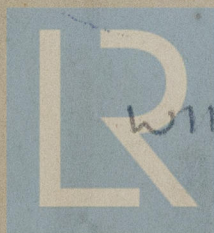
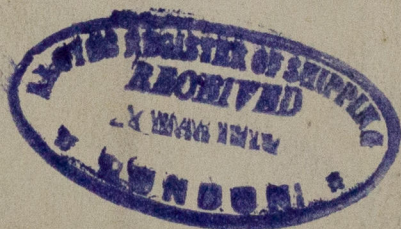
YARD NO. 564 G

PLAN. Profile & Midship Section.

SHIP'S NAME, St. Olaves.

GLASGOW REPORT No. 38595

GLASGOW REPORT No.



© 2020

W118-0092

Lloyd's Register
Foundation