

# BOILER. CONTRACT. N<sup>o</sup> 854.

MESSRS: SWAN, HUNTER & WIGHAM RICHARDSON SHIP N<sup>o</sup> 1235.

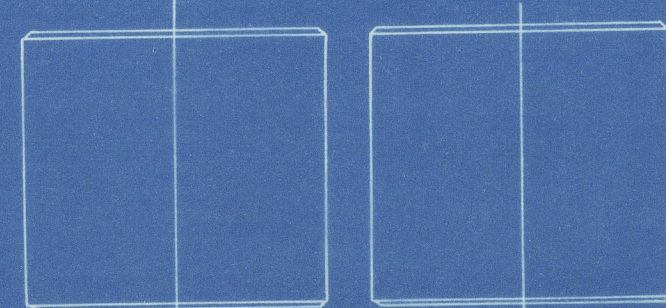
To Be Constructed To Pass LLOYDS REQUIREMENTS.

TWO OFF THIS.  
SCALE 1" TO 1'-0".

STRENGTH OF JOINT.

PLATE = 85%  
RIVET = 88.2%

FRONT OF BOILERS.



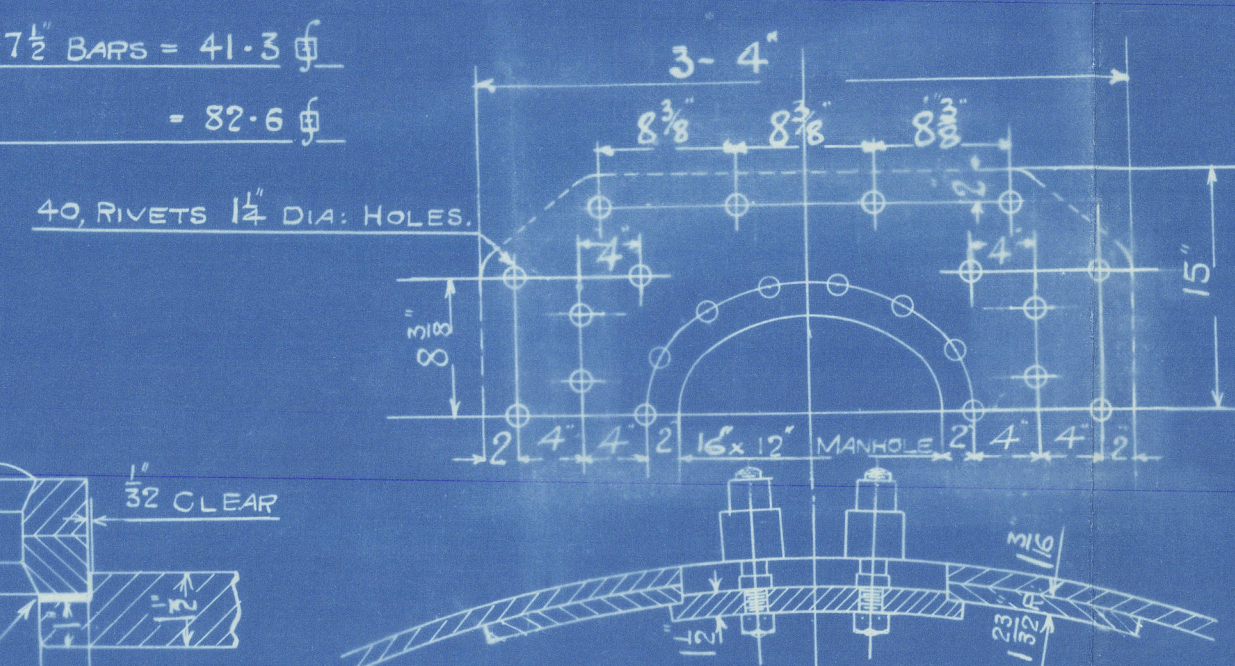
KEY PLAN SHOWING POSITION OF MANHOLES & BUTT STRAPS.

HEATING SURFACE.

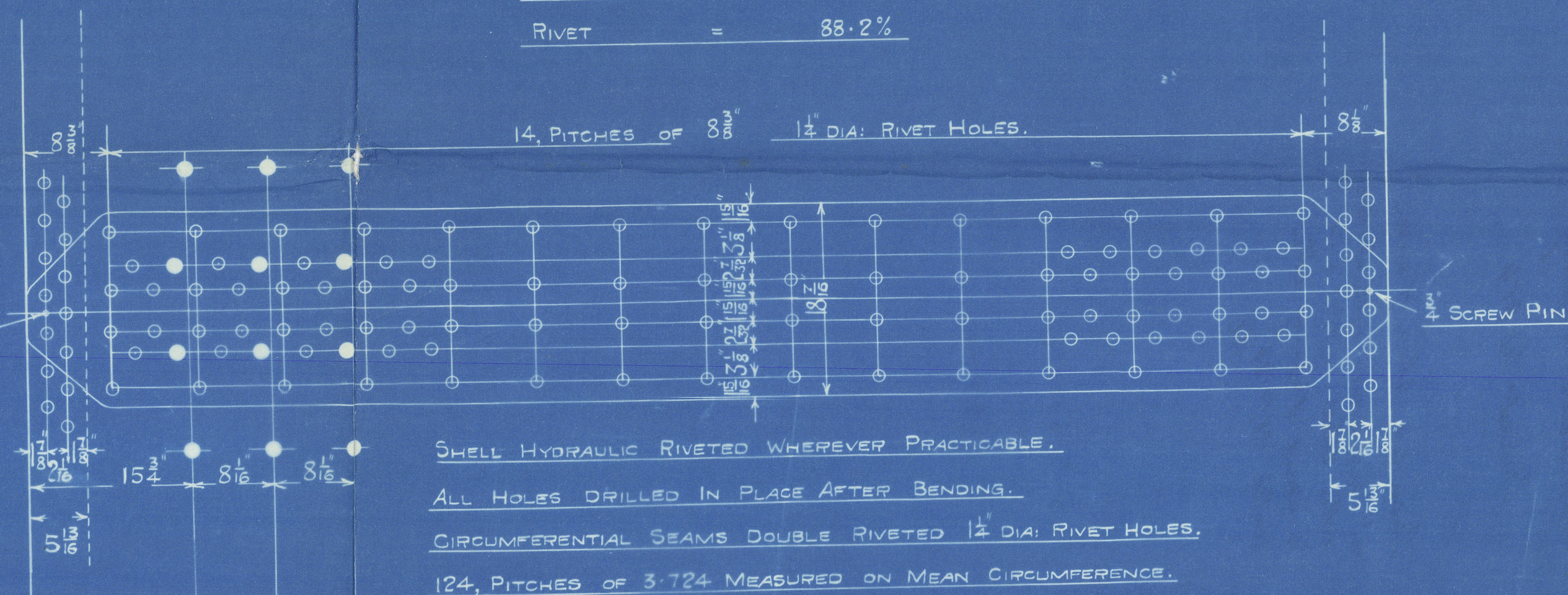
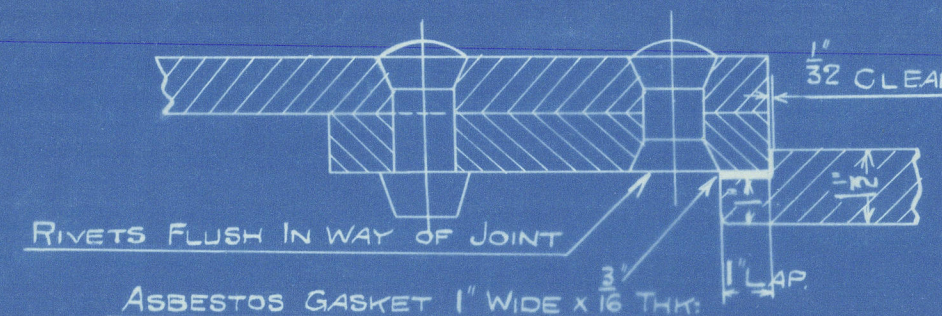
TUBES.	1351 Sq. Feet.
FURNACES	120 "
COMBUSTION CHAMBERS	151 "
BACK TUBE PLATE	32 "
FRONT TUBE PLATE	26 "
TOTAL ONE BOILER	1680 "
TOTAL TWO BOILERS	3360 "

WORKING PRESSURE 225 LBS. PER Q.  
TEST PRESSURE 338 LBS. PER Q.

GRATE SURFACE ONE BOILER 5'-7 1/2" BARS = 41.3 Q.  
TWO BOILERS = 82.6 Q.



DETAIL OF SHELL MANHOLE DOOR JOINT.



SHELL HYDRAULIC RIVETED WHEREVER PRACTICABLE.  
ALL HOLES DRILLED IN PLACE AFTER BENDING.  
CIRCUMFERENTIAL SEAMS DOUBLE RIVETED 1 1/2" DIA. RIVET HOLES.  
124 PITCHES OF 3.724 MEASURED ON MEAN CIRCUMFERENCE.

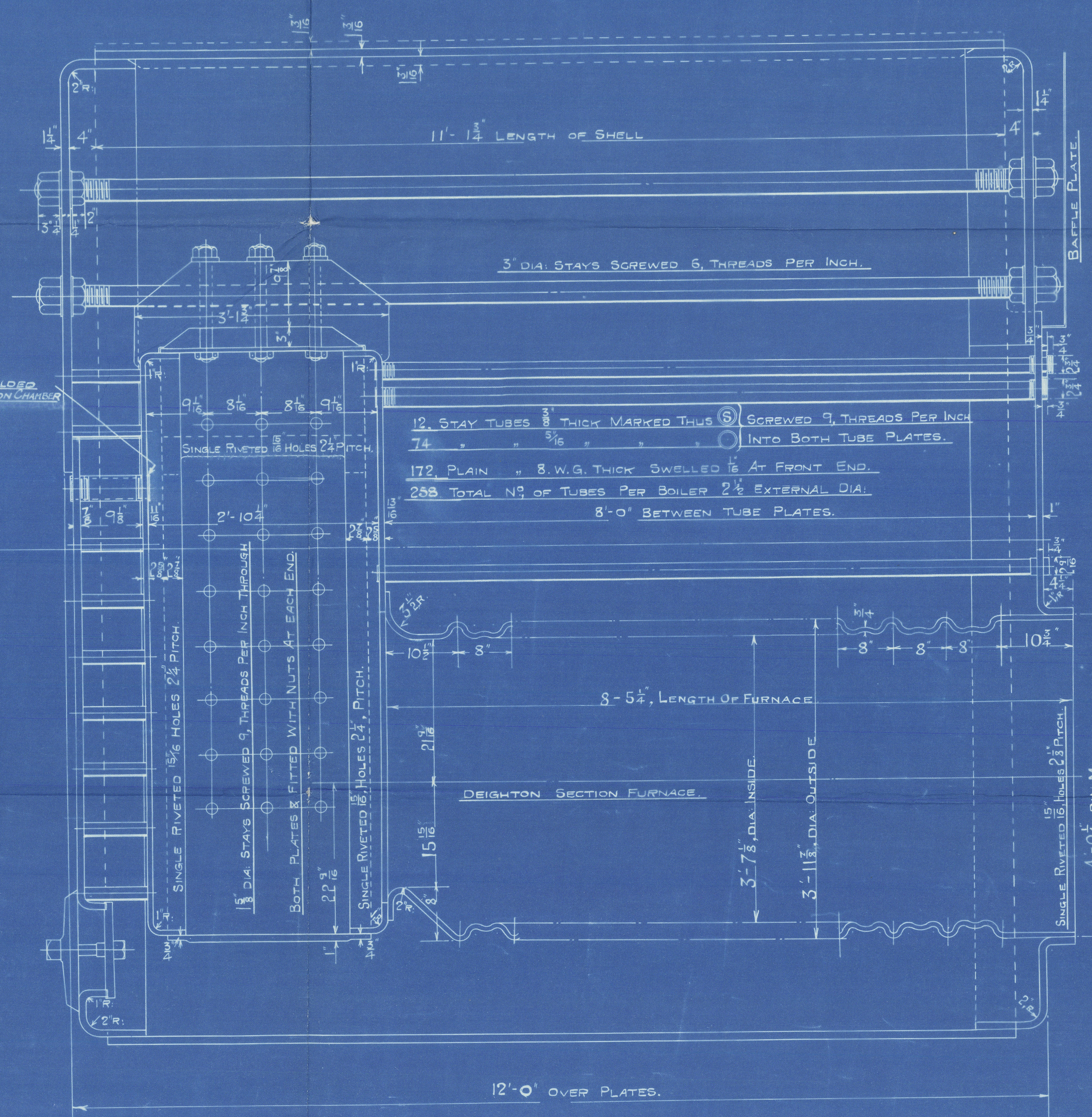
DETAIL OF TUCKING IN OF INNER BUTT STRAP.

MATERIALS.

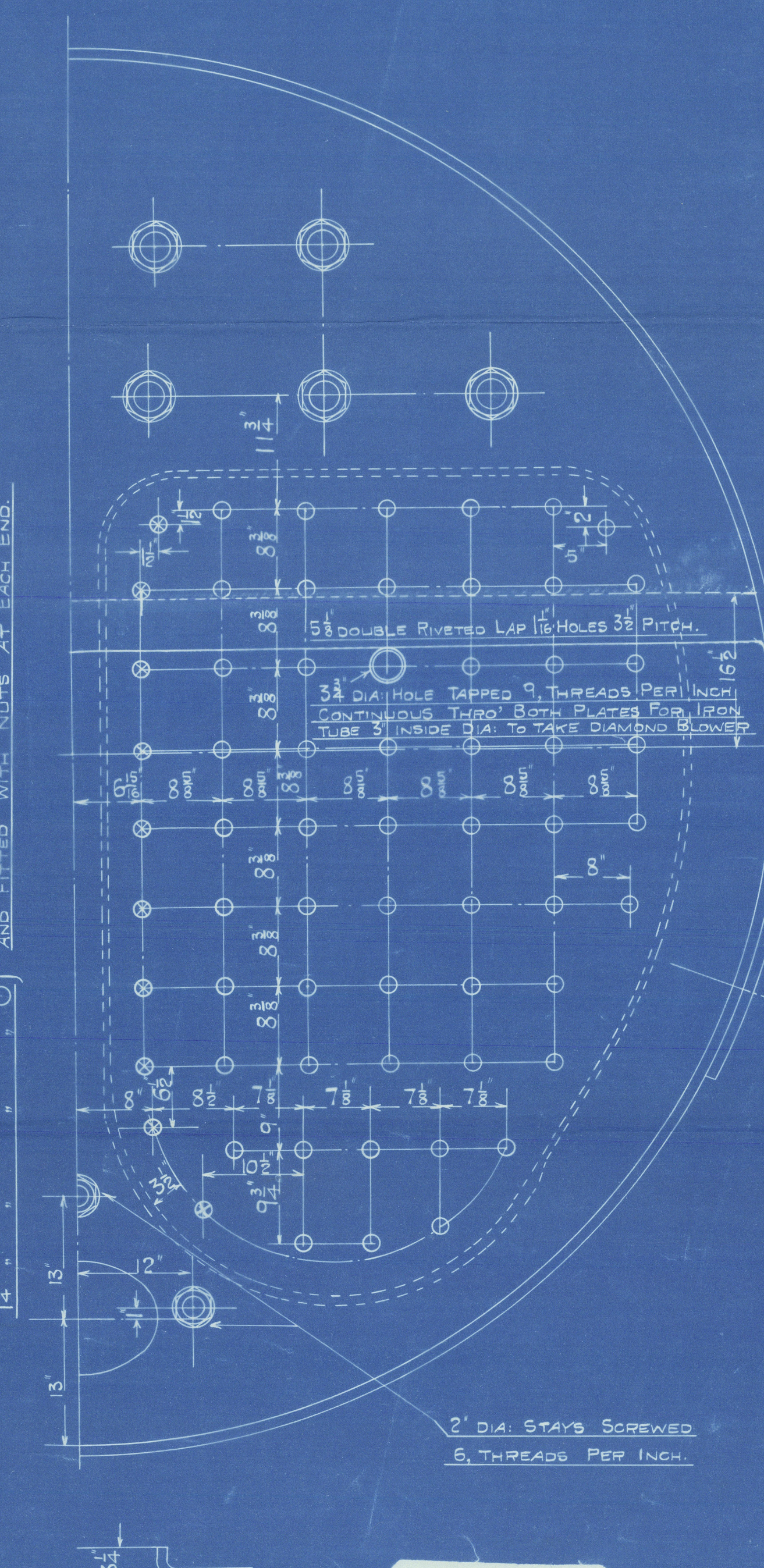
DESCRIPTION.	MATERIAL	TENSILE STRENGTH
SHELL PLATES & BUTT STRAPS	STEEL	30 TO 34, TONS Q.
C.C. GIRDER PLATES & MANHOLE DOUBLING	"	28 TO 32 "
WRAPPER, FLANGED PLATES & FURNACES	"	26 TO 30 "
LONGITUDINAL STAYS	"	28 TO 32 "
C. C. SCREWED STAYS	"	26 TO 30 "
RIVET BARS.	"	26 TO 30 "
TUBES.	IRON	"

PLATES & RIVETS OF SIEMENS MARTIN STEEL.

Amended copy in accordance with the particulars letter dated 26/9/22, also according to a letter received from the Metallurgist dated 28/9/22 in which the particulars of the making of the manhole door is altered and furnace center also altered.



1 1/2" DIA. STAYS MARKED THUS (S) SCREWED 9 THREADS PER INCH INTO BOTH PLATES.  
AND FITTED WITH NUTS AT EACH END.



2" DIA. STAYS SCREWED 5 THREADS PER INCH.





© 2020  
THE WALLSEND SLIPWAY & ENGINEERING Co., Ltd.

Enclosure to

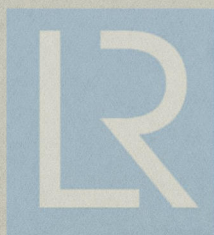
Lloyd's Register  
Foundation

W118-0018<sup>2</sup>/<sub>2</sub>

Waldsea Slipway's 854.

Swan Bank's 1235 — .

Boiler



© 2020

Lloyd's Register  
Foundation



Mallockend Slipway  
Contract No 854.

Amended plan of boiler  
in accordance with London  
letter dated 26/7/23. and  
Mallockend Slipway letter  
dated 28/7/23.  
Ph.

Not sent up to London

---

S. S. SALMO.

NEWCASTLE ON TYNE.

Report No. 77784.

---

W118-0018<sup>1</sup>/<sub>2</sub>



© 2020

Lloyd's Register  
Foundation