

"BRITISH LOYALTY"
969 ONLY.
Nos. 968-9-70-77.

968-977 BUILDING AT HEBBURN
 969-970 " " " JERROW

MIDSHIP SECTION.

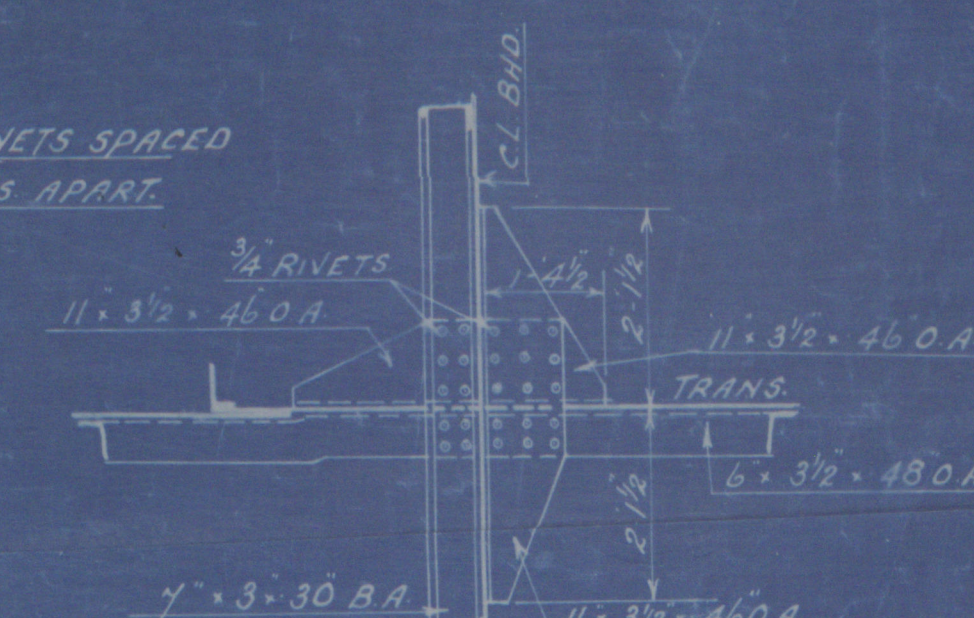
SCALE 1/2" = 1 FOOT.

DIMENSIONS 440' 0" B.P. x 56' 9" M.L.D. x 33' 11" M.L.D. TO UPPER D.K.
 CLASS + 100 A.I. (LONG FRAMING) CARRYING PETROLEUM IN BULK.

EQUIPMENT TO BE SUBMITTED SEPARATELY.

ITEM	1/2 LENGTH	ENDS
BUTTS OF KEEL PLATE	QUADRUPLE RIV. OVERLAP QUAD TO TREBLE (WHERE 76)	TREBLE
SHELL PLATING FROM KEEL TO UPPER TURN OF BULGE	QUADRUPLE	TREBLE
UPPER TURN OF BULGE	TREBLE	TREBLE
TO STRAKE BELOW SHEERSTRAKE		
STRAKE BELOW SHEERSTRAKE	QUADRUPLE	TREBLE
SHEERSTRAKE	QUADRUPLE	TREBLE
POOP SIDE PLATING (ONE STRAKE)	QUADRUPLE	DOUBLE
BRIDGE	DOUBLE	DOUBLE
FORECASTLE SIDE PLATING	DOUBLE	SINGLE
UPPER DECK STRINGER	QUADRUPLE	TREBLE
PLATING	DOUBLE	DOUBLE
SECOND STRINGER	DOUBLE	DOUBLE
PLATING & TRUNK SIDE	DOUBLE	DOUBLE
POOP BRIDGE & FLY D. STRINGER & D. PLATING	SINGLE	SINGLE
C.B. LINE BULKHEAD BOTTOM STRAKE	TREBLE	TREBLE
SEAMS OF SHELL PLATING	DOUBLE	DOUBLE
UPPER DECK PLATING	DOUBLE IN WAY OF D. SINGLE	SINGLE
SECOND	DOUBLE	SINGLE
POOP BRIDGE & FORECASTLE DECK PLATING	SINGLE	SINGLE
FORECASTLE SIDE PLATING	DOUBLE	SINGLE

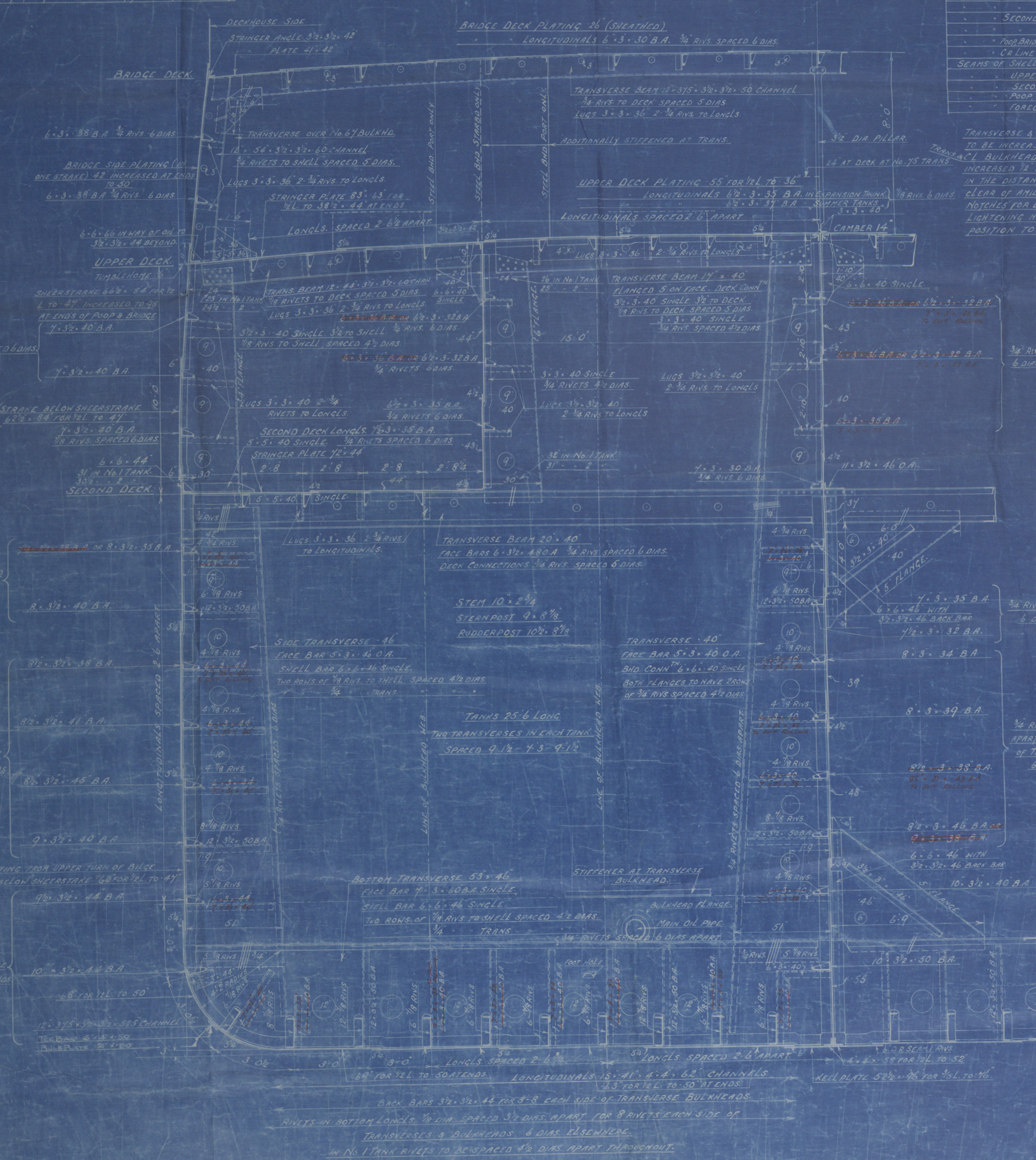
TRANSVERSE & C.L. BULKHEAD PLATING & BOUNDARY ANGLES TO BE INCREASED AT ENDS FOR SHEER (AS PER TABLES)
 INCREASED 1/2" IN DEPTH OR EQUIVALENT FOR EACH 2' 6" INCREASE IN THE DISTANCE OF THE STIFFENERS FROM THE TOP OF THE BHD
 CLEAR OF MIDSHIPS
 NOTCHES FOR LONGLS. TO BE WELL ROUNDED AT CORNERS, NOT ROUGH PUNCHED
 LIGHTENING HOLES IN TRANSVERSE TO MAINTAIN THE SAME RELATIVE POSITION TO SHELL AS SHOWN.



DETAIL OF ATTACHMENT OF 2ND DECK TRANSVERSE TO C.L. BULKHEAD.



1/8 RIVS SPACED 3 1/2 DIAS. APART FOR 8 RIVS EACH SIDE OF TRANSVERSES & BULKHEADS 6 DIAS ELSEWHERE.



111

"BRITISH LOYALTY"

Palmers No 969

Midship Section
as built

Nwe Rpt No 82273.

Wreck Section 399

RETAIN

© 2020



Lloyd's Register
Foundation

W1177 - 0076