

SURFACES	
TUBES	767 #
FIREBOX TOP AND SIDES	69 "
" BACK	43 "
TUBEPLATE	27 "
FURNACES	76 "
TOTAL HEATING SURFACE	982 #
GRATE AREA (5-8 BARS)	35.4 "
TUBE AREA	5.7 "
WATER AREA	94 "
STEAM SPACE	190 #
GRATE AREA : HEATING SURFACE	: 27.8
" : TUBE	: 0.7
" : AREA	" 2 : 2.66
" : WATER	" 1 : 5.37
% BOILER ABOVE FIREBOX	29.9
WEIGHT OF WATER	12 TONS

RIVETING		
	LONG	END
RIVET HOLE DIA	1"	1 1/8"
PITCH	4 1/2"	3:20"
1/8 PLATE	78:2	70:7
1/8 RIVET	78:5	49:3
1/8 COMBINED	76:1	

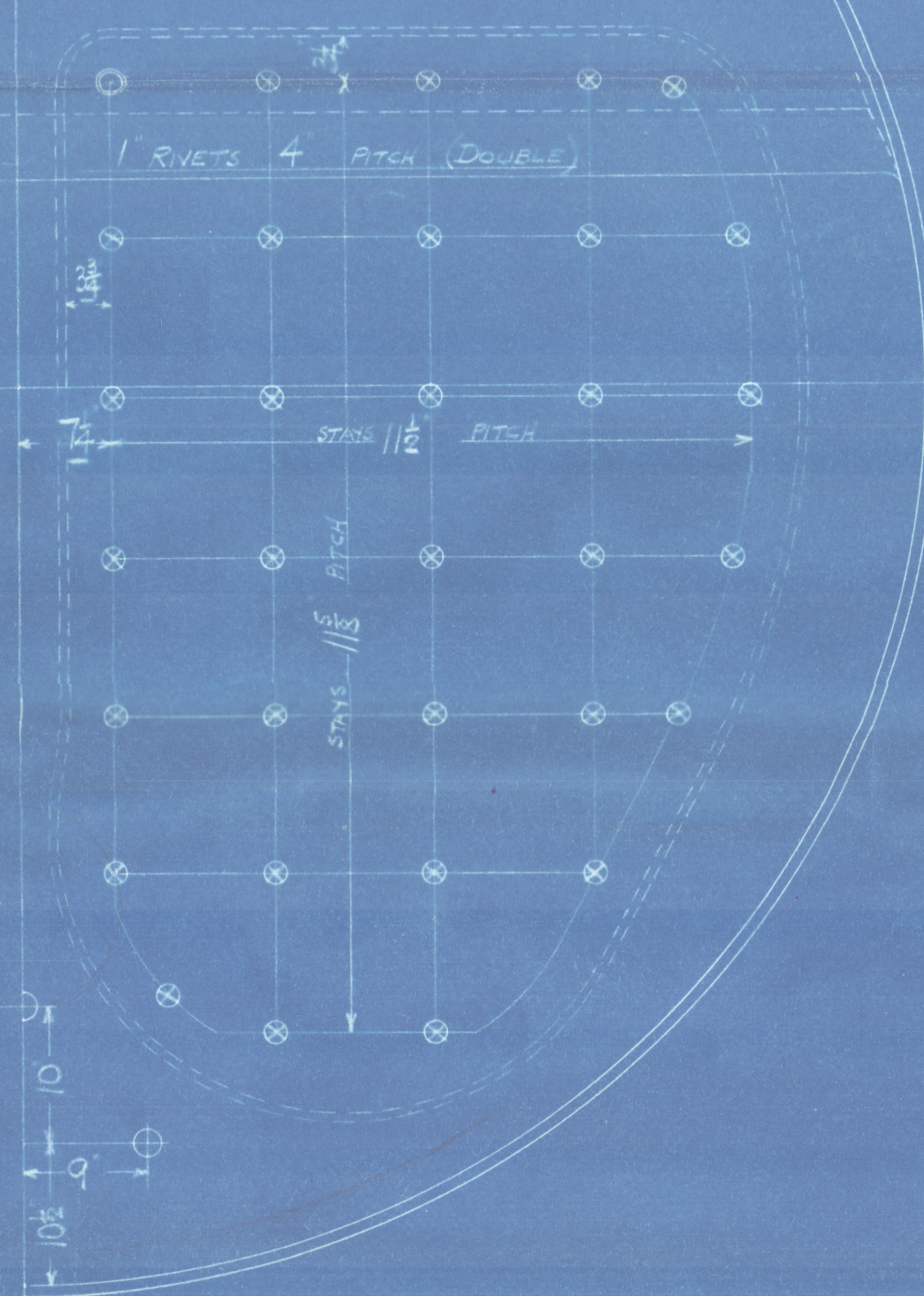
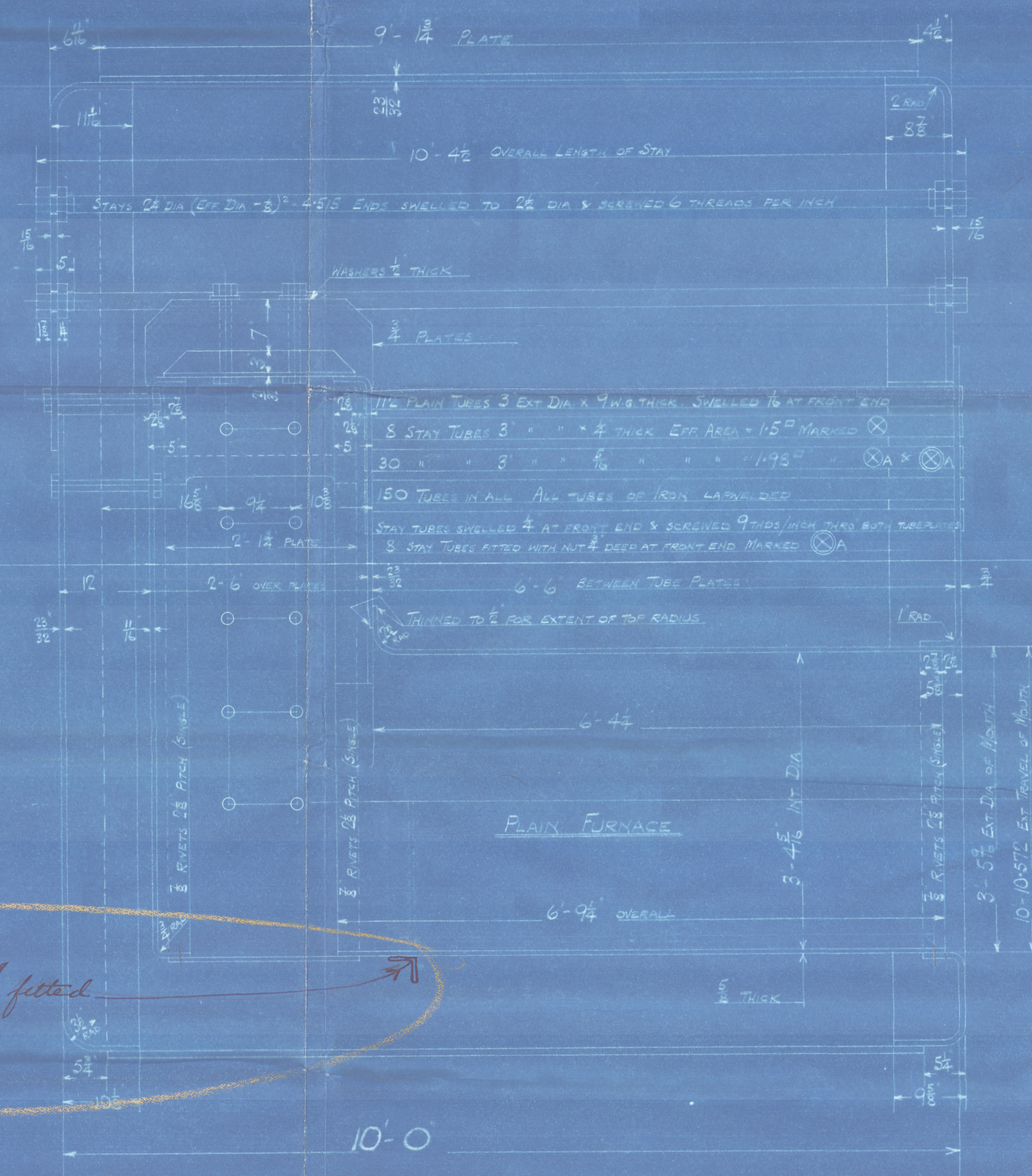
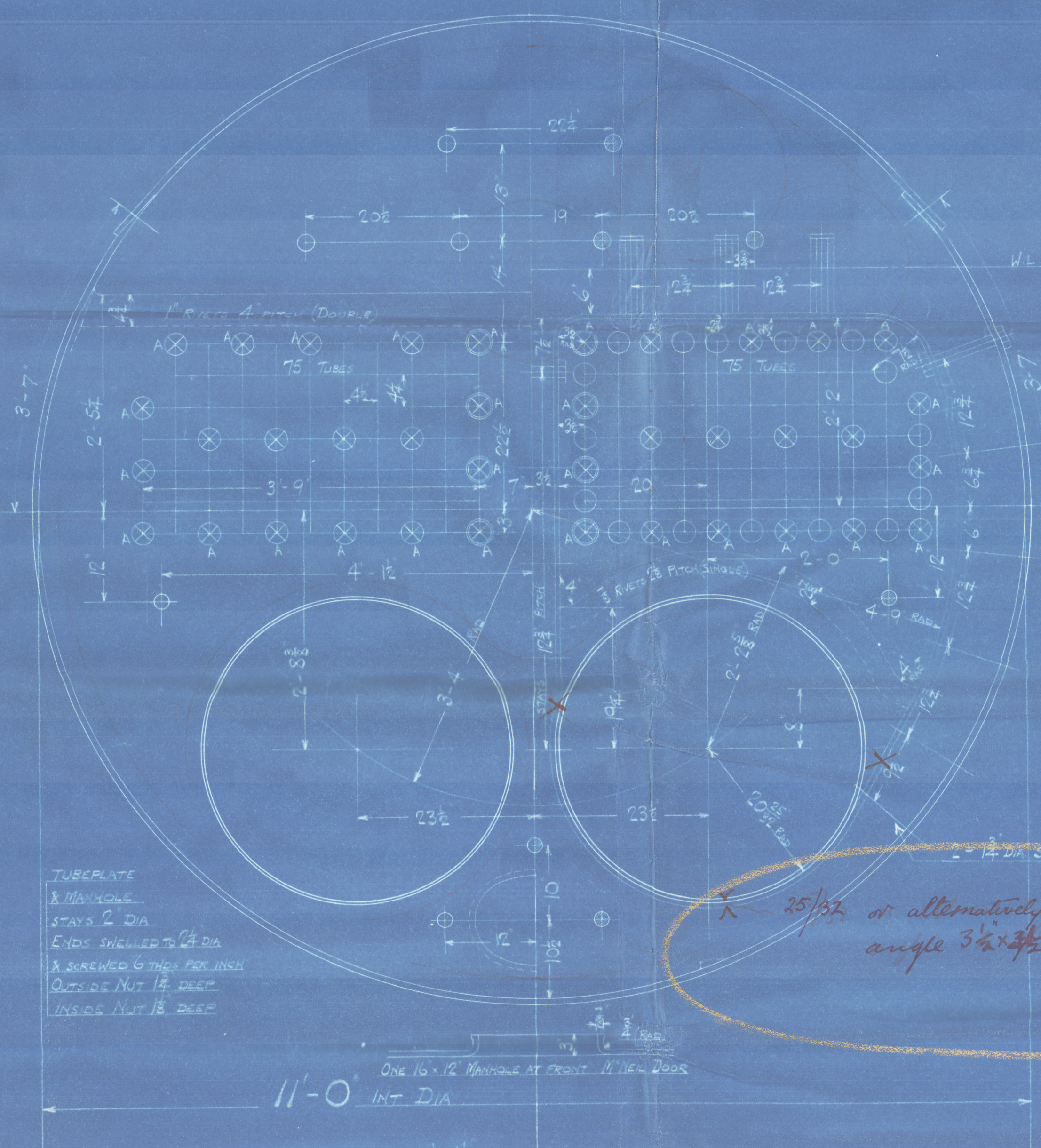
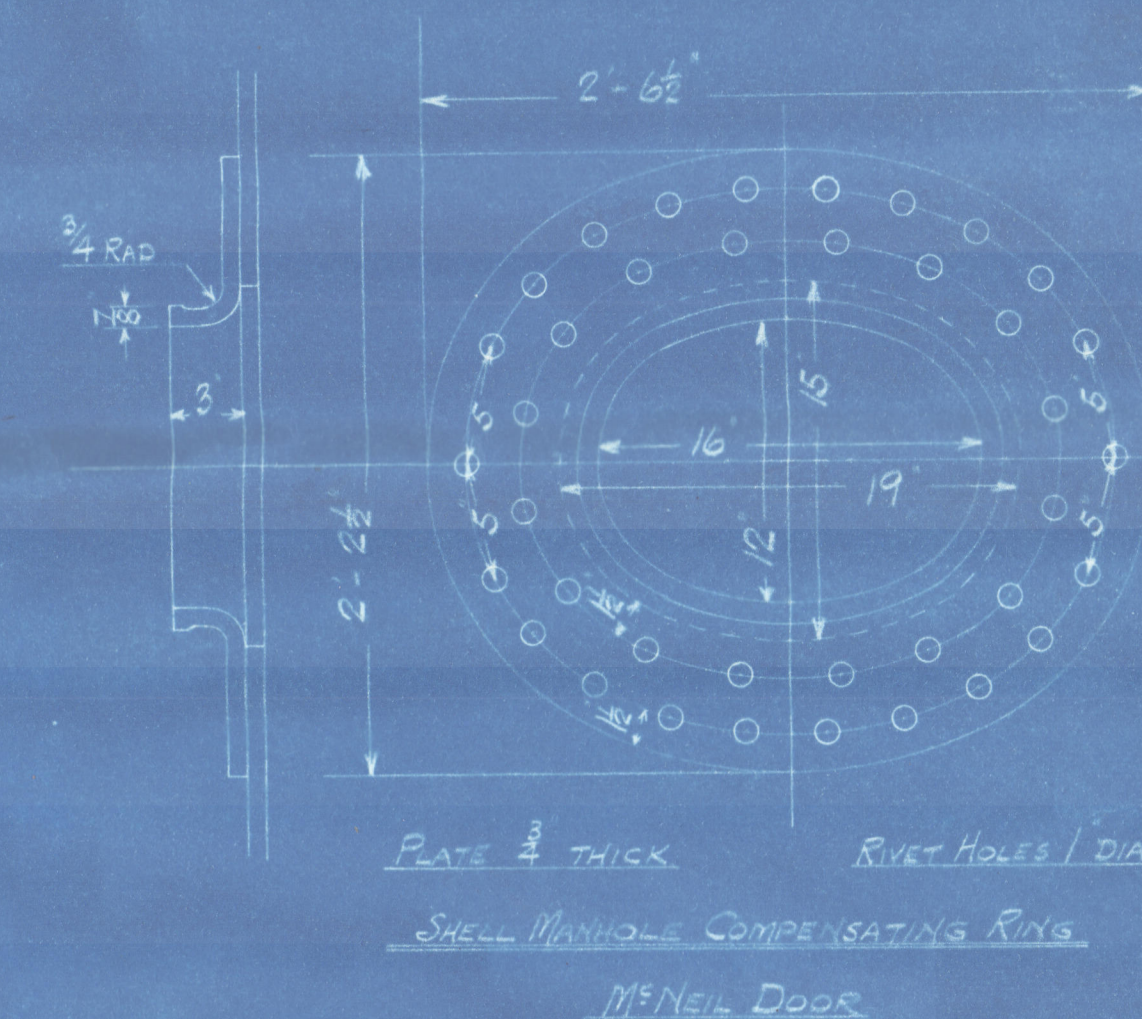
LIMITS OF TENSILE STRENGTH & MATERIAL		
SHELL	28 TO 32 TONS	
GIRDERS		
OTHER PLATES	26 " 30 "	
FURNACES	26 " 20 "	
MAIN STAYS	28 " 32 "	
SERewed STAYS	26 " 30 "	
RIVET BARS	26 " 30 "	

ALL RIVET HOLES DRILLED IN PLACE.
MAIN STAYS SHELLED AT ENDS BY
HYDRAULIC PRESSURE & ANNEALED.

BACK END CIRCUMFERENCE
130 PITCHES OF 3:20"

21 PITCHES OF 4 1/2" = 8'-0 1/2"

FRONT END CIRCUMFERENCE
130 PITCHES OF 3:20"



FIREBOX STAYS		STEEL	
POSITION	MARK	DIA	SCREWED
TOP & SIDES	○	1 1/4"	9
BACK, WIDE SPACE & TOP ROW	○	1 1/2"	9
BACK TOP CORNER	○	1 3/8"	9

ALL FIREBOX STAYS SCREWED THRU BOTH PLATES AND NUT FITTED AT EACH END.
ALL 1 1/4" NUTS 3/4 DEEP EXCEPT ON GIRDER TOPS WHERE THE OUTSIDE NUTS ARE 1 1/2 DEEP.
ALL 1 1/2" NUTS 1 DEEP.

DONKEY BOILER

ONE OFF
CONT N° 822

WORKING PRESSURE 120 LBS PER SQ INCH
TEST 230 " " "
TO PASS LLOYD'S SURVEY
SCALE 1/2" = ONE FOOT



LCD
2-3-25

O.T. 31031.B.

LCD
2-3-25

FIREBOX STAYS

STEEL

POSITION	MARK	DIA	(DIA - .267) ²	SCREWED THDS / INCH
TOP & SIDES	○	1.000	1.844	9
BACK, WIDE SPACE & TOP ROW	⊗	1.125	2.199	9
BACK TOP CORNER	⊙	1.250	2.585	9

ALL FIREBOX STAYS SCREWED THRO' BOTH PLATES AND NUT FITTED AT EACH END

ALL $\frac{5}{8}$ & $\frac{3}{4}$ NUTS $\frac{7}{8}$ DEEP EXCEPT ON GIRDER TOPS WHERE THE OUTSIDE NUTS ARE $\frac{5}{8}$ DEEP

ALL $\frac{7}{8}$ NUTS 1" DEEP

O.T. 31031.B.

[Handwritten signature]
6/3/24

From DAVID ROWAN & CO., Ltd., Glasgow
ENCLOSURE
FOR MESSRS.

Lloyd's Register of S.
Foundation

W1176 - 01682

GLASGOW

D. ROWAN & CO. L^d

DONKEY BOILER N^o 822

W P. 120 LBS

C. CONNELL & CO. S^{rs} N^o 405

N^o 16966
LLOYD'S TEST
230 LBS
W P. 120 LBS
L.C.D.
28-10-25

W1176-0168

"Benarty"

GLASGOW REPORT No. 45290

H. Rowan lts 12-3-25-
Increase, wrapper plate
to $\frac{25}{32}$ " all round



© 2020

Lloyd's Register
Foundation