

N^{os} 1012-13.

+1150

N^{os} 992-3.

NUMERALS.

L-D	450 x 37	16850
L-(B+D)		45000
D		37
L/D TO UPPER DECK		12.17
L/D TO BRIDGE DECK		9.98
d		9

MIDSHIP SECTION

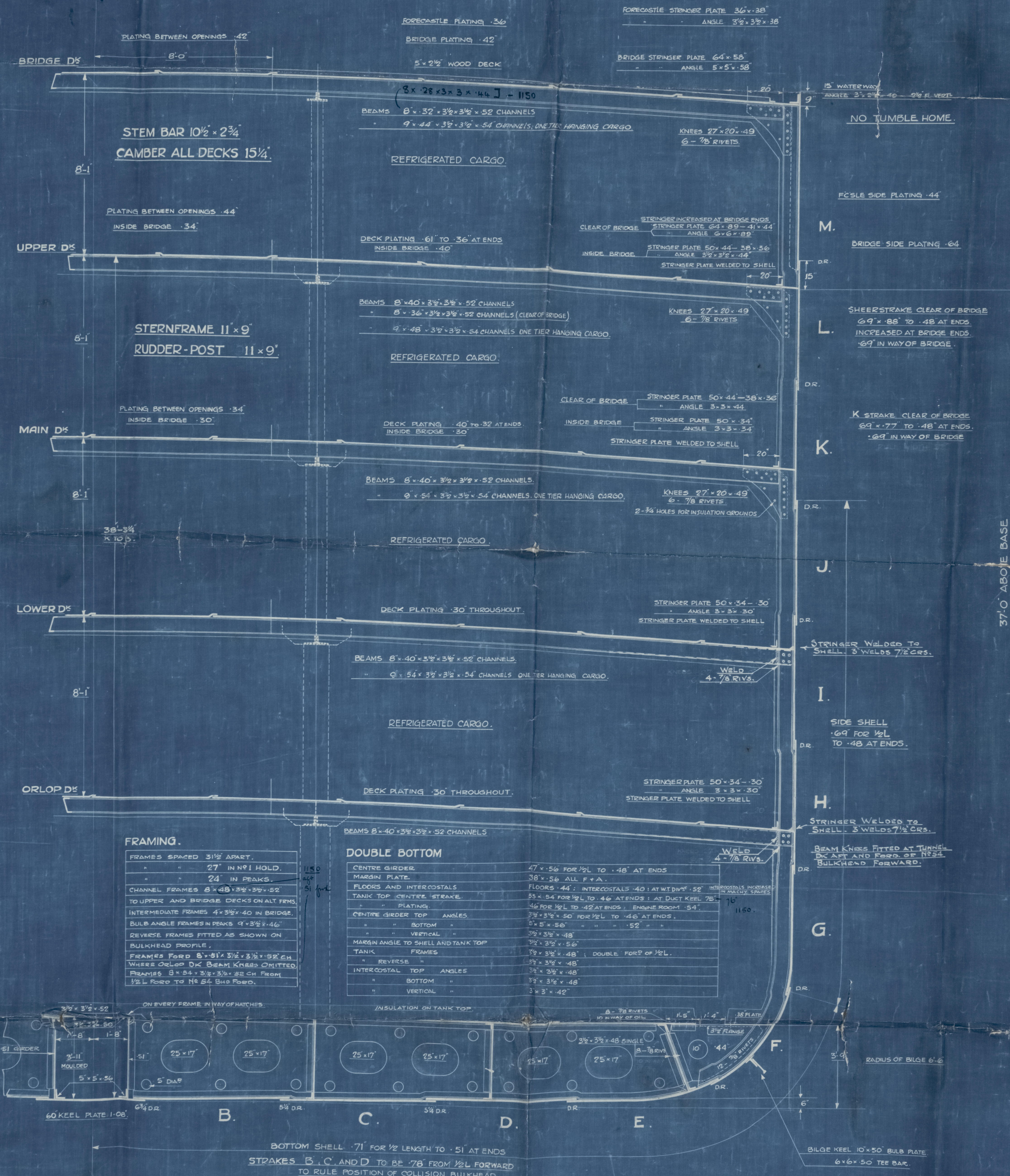
SCALE: 1/2" = 1 FOOT.

DIMENSIONS 450' B.P. x 63' x 37' MOULDED TO UPPER DECK.

LLOYD'S CLASS * 100 AT 'FULL SCANTLING VESSEL' 42% ERECTIONS.

{ 2 Bower anchors
300 fathoms 2 1/16 Taper steel wire cable } supplied
1150

EQUIPMENT NUMERAL NOT EXCEEDING 48800.	
3 BOWER ANCHORS (STOCKLESS)	232 CWT. COLL. WT.
1 STREAM ANCHOR (EX STOCK)	232 "
300 FATHOMS	2 1/2 CHAIN CABLE.
120 "	4 3/4 S.F.S.W.R. (6-24) STREAM WIRE.
130 "	5 1/2 S.F.S.W.R. " TOWLINE.
2 HAWSERS	100 FMS. 2 3/4 F.S.W.R.
2 WARPS	100 " " "



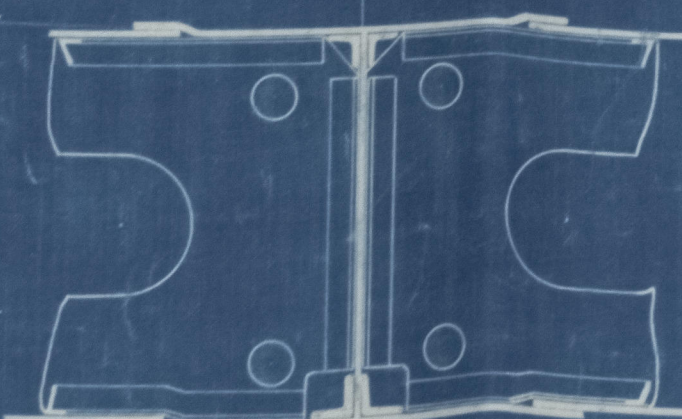
FRAMING.

FRAMES SPACED 31 1/2' APART.
" " 27' IN N ^o 1 HOLD.
" " 24' IN PEAKS.
CHANNEL FRAMES 8' x 48' x 3/4" x 52
TO UPPER AND BRIDGE DECKS ON ALT. FMS.
INTERMEDIATE FRAMES 4' x 36' x 3/4" x 52
BULB ANGLE FRAMES IN PEAKS 9' x 3 1/2' x 46'
REVERSE FRAMES FITTED AS SHOWN ON
BULKHEAD PROFILE.
FRAMES FORD 8' x 31' x 3/4" x 52 CH.
WHERE ORLOP DECK BEAM KNEES OMITTED.
FRAMES 8' x 34' x 3/4" x 52 CH. FROM
1/2 L FORD TO NO 54 BUL FORD.

DOUBLE BOTTOM

CENTRE GIRDER	47' x 56' FOR 1/2 L TO .48' AT ENDS
MARGIN PLATE	38' x 56' ALL F + A.
FLOORS AND INTERCOSTALS	FLOORS .44' INTERCOSTALS .40' AT WT D/W .52
TANK TOP CENTRE STRAKE	55' x 54' FOR 1/2 L TO .46' AT ENDS : AT DUCT KEEL 75'
" PLATING	1/4" FOR 1/2 L TO .42' AT ENDS : ENGINE ROOM .54'
CENTRE GIRDER TOP ANGLES	3 1/2' x 3 1/2' x 50' FOR 1/2 L TO .46' AT ENDS.
" " BOTTOM	5' x 5' x 56' " " .52' AT ENDS.
" " VERTICAL	3 1/2' x 3 1/2' x 48'
MARGIN ANGLE TO SHELL AND TANK TOP	3 1/2' x 3 1/2' x 56'
TANK FRAMES	3 1/2' x 3 1/2' x 48' : DOUBLE FORD OF 1/2 L.
" REVERSE "	3 1/2' x 3 1/2' x 48'
INTERCOSTAL TOP ANGLES	3 1/2' x 3 1/2' x 48'
" BOTTOM "	3 1/2' x 3 1/2' x 48'
" VERTICAL "	3' x 3' x 42'

INSULATION ON TANK TOP.



KEEL PLATE
60' x 90' FOR 1/2 L
TO .81' AT ENDS.
RULE SIZE 53 1/2' x 90'

SECTION THROUGH MOTOR ROOM SHOWING ENGINE SEATING TO
BE SUBMITTED SEPARATELY.

BOTTOM FORWARD STRENGTHENING AS PER RULE.



W1175-0037

W1175-0037

I

HARLAND & WOLFF LTD.
BELFAST

No. 1012/13

TITLE Midship Section
as Built

DATE APPROVED ✓



1012

Richmond Castle

Richmond
Castle

Bel. 12312

1013 "Rowallan Castle"

~~PLANS TRANSFERRED~~

~~TO SISTER VESSEL~~

~~Richmond Castle~~
~~1012/13~~

(Butter & Co. Ltd. 18/12)
(Rowallan Castle)

No. 1178
Despatching etc. Glasgow 23rd June 1912

①

Despatching etc. - Glasgow 5. 11. 11

No. 1150

W1175-0037



© 2021

Lloyd's Register
Foundation