

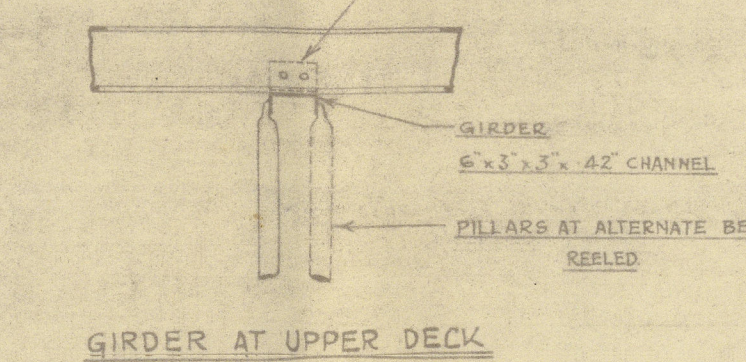
S.S. No 608

PROFILE

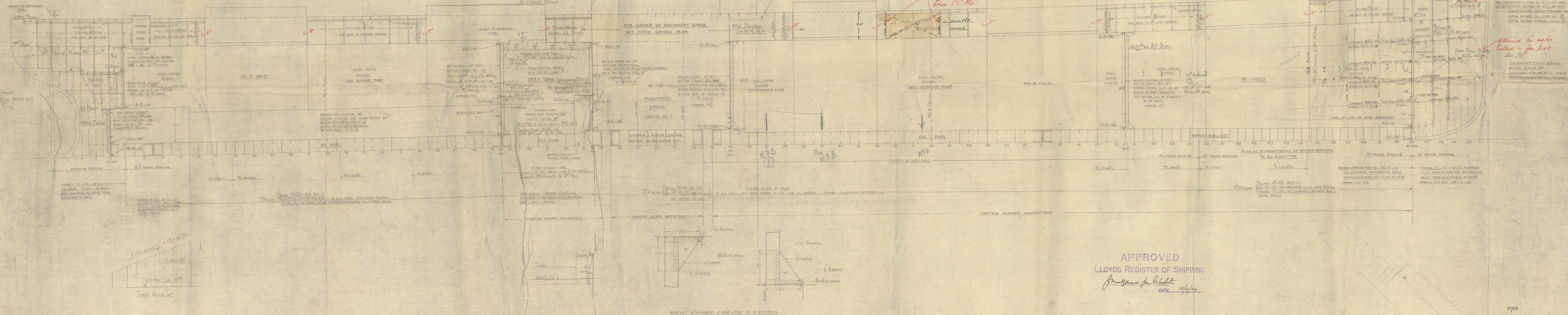
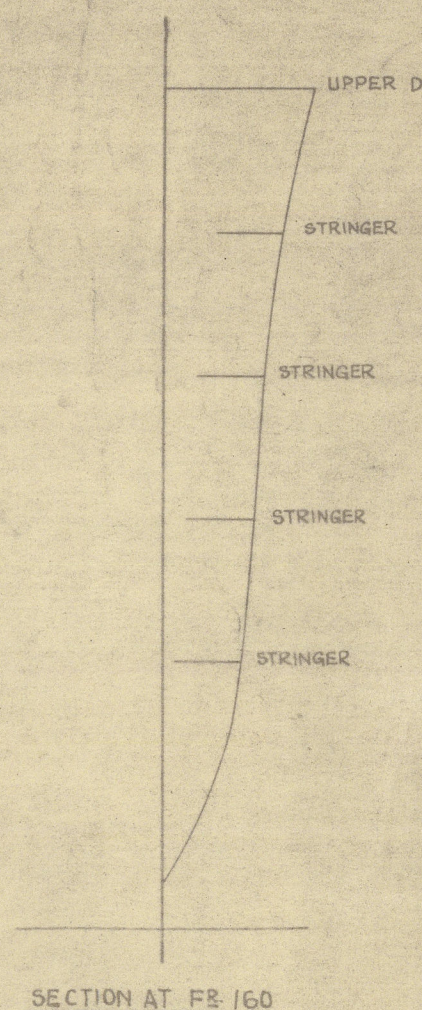
SCALE: 1/8" = 1 FOOT

MOULDED DIMENSIONS: 410'0" x 55'3" x 37'6" to Upper Deck

Pillars at hatch ends to have flat heads. Note.



FOR DETAIL OF GIRDERS AND CORNER PILLARS AT HATCHES
[SEE HATCH GIRDER PLAN]
PILLARS AT HATCH ENDS TO HAVE FLAT HEADS & HABLES



APPROVED
LLOYD'S REGISTER OF SHIPPING
14/4/24

M. S. "CITY OF STOCKHOLM"

Barclays box only.

Profile Sh

"St-Merriel"

GLASGOW REPORT No. 44971

W117-0126



© 2021

Lloyd's Register
Foundation